

Sanna

Top

Maten / Tailles / Sizes / Größen:

---	34
---	36
---	38
---	40
---	42
---	44
---	46
---	48
---	50
---	52
---	54
---	56

Patroondelen / Pièces du patron / Pattern pieces / Schnittteile:

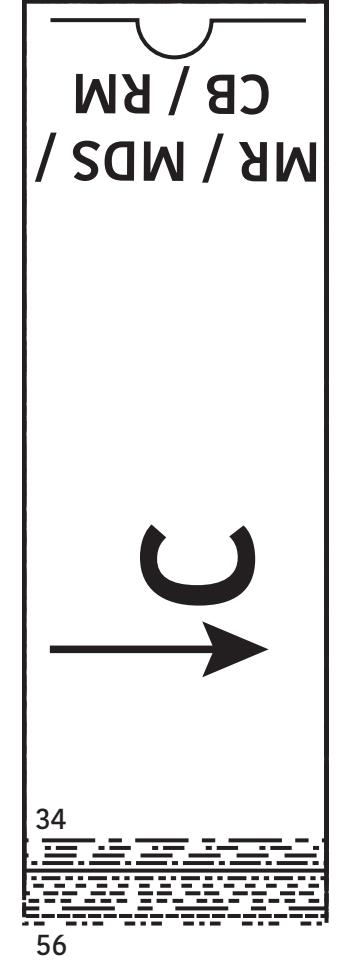
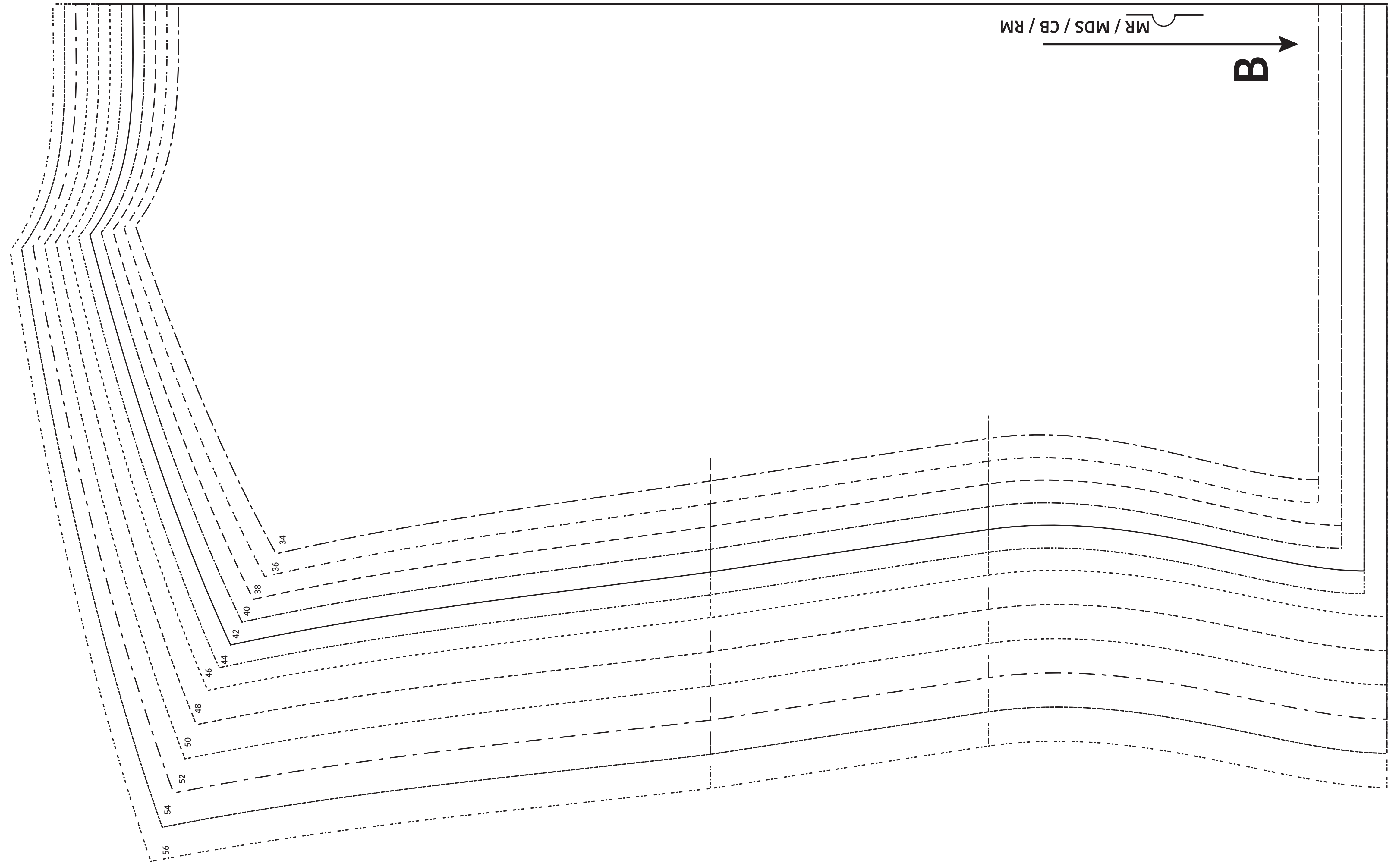
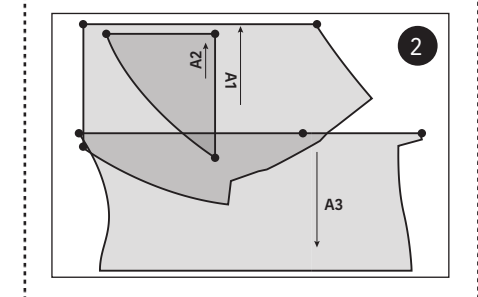
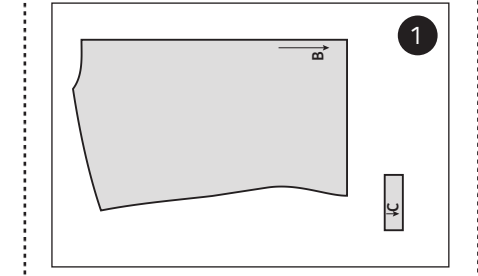
- A** voorpand / devant / front panel / Vorderenteil
- B** rugpand / dos / back panel / Rückenteil
- C** halsbies / bord d'encolure / neck trim / Halspaspel

LET OP! De patroondelen bevinden zich op verschillende raderbladen.

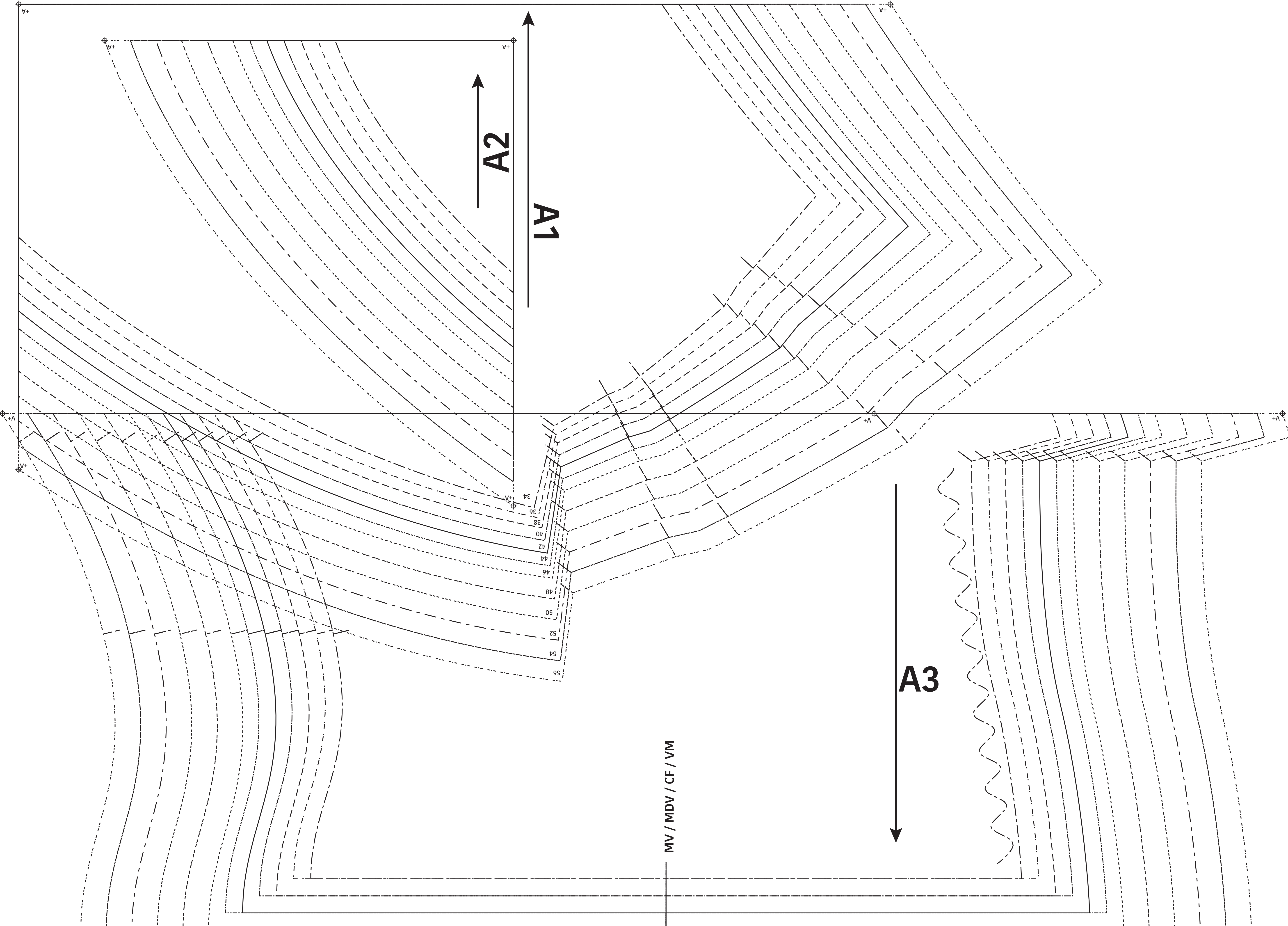
ATTENTION! Les pièces du patron sont réparties sur plusieurs planches.

IMPORTANT! The pattern pieces are located on different pattern sheets.

ACHTUNG! Die schnittteile befinden sich auf unterschiedlichen Schnittmusterbögen.



34
56



Sanna
 Top
 Zie RADERBLAD 1 / Voir PLANCHE 1 /
 See PATTERN SHEET 1 /
 Siehe SCHNITTMUSTERBOGEN 1