

Tindra

Broek / Pantalon /
Trousers / Hose

Maten / Tailles / Sizes / Größen:

---	34
---	36
---	38
---	40
---	42
---	44
---	46
---	48
---	50
---	52
---	54
---	56

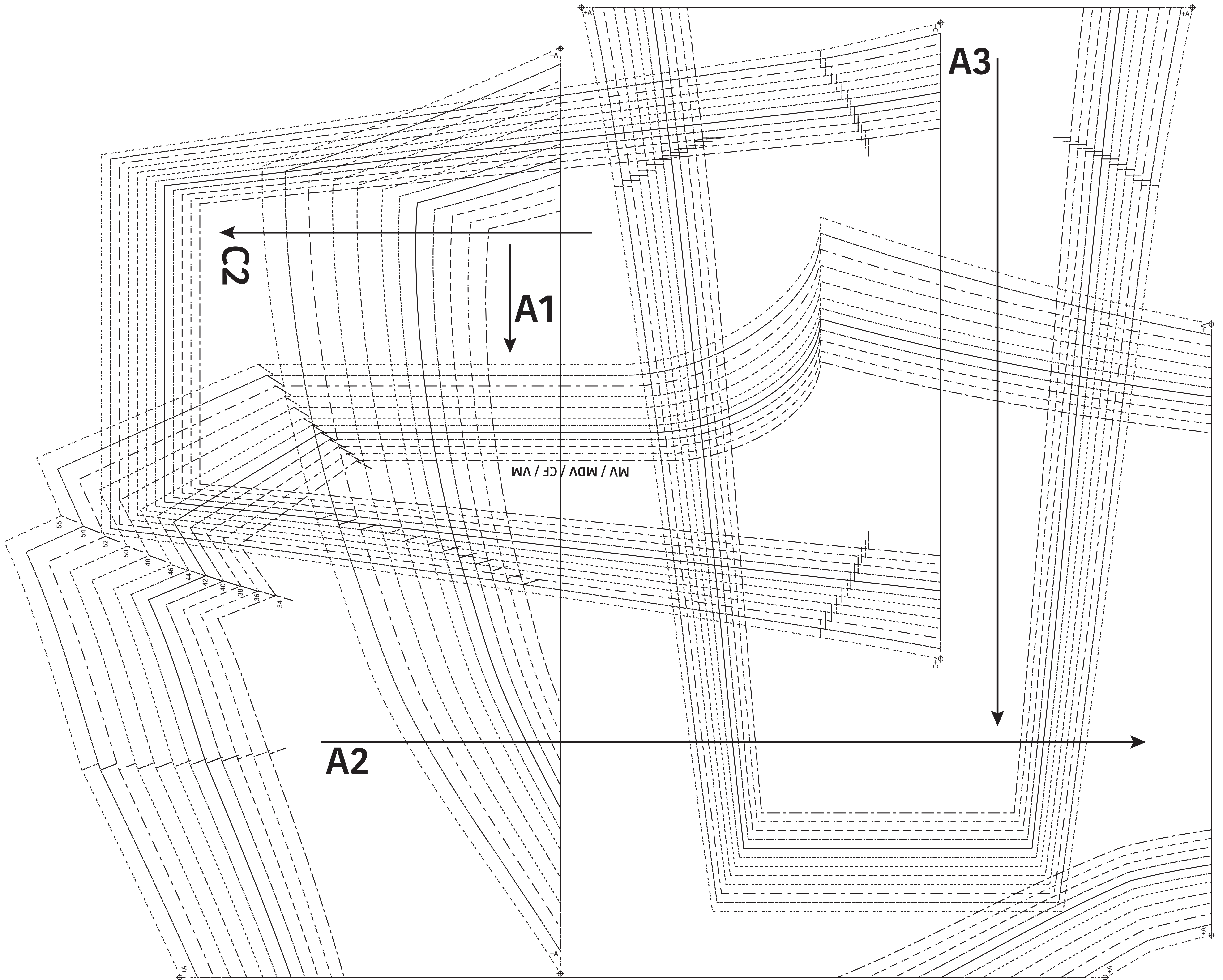
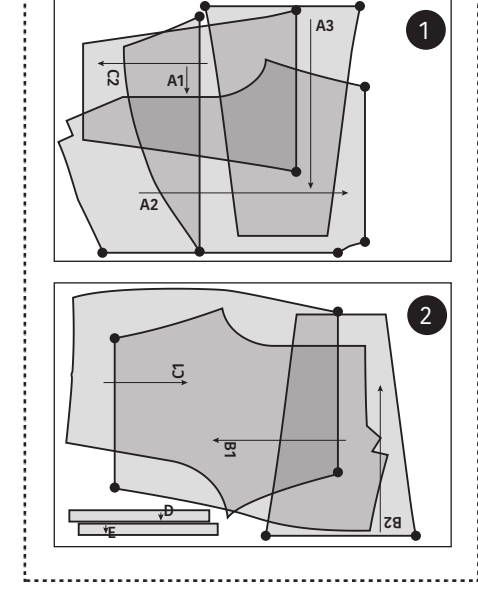
- Patroondelen / Pièces du patron /
Pattern pieces / Schnittteile:
- A** rechtervoorpannd / devant droit /
right front panel / rehtes Vorderteil
 - B** linkervoorpannd / devant gauche /
left front panel / linkes Vorderteil
 - C** ruggpannd / dos / back panel /
Rückenteil
 - D** tailleband VP / ceinture DV /
waistband FP / Bund VT
 - E** tailleband RP / ceinture DS /
waistband BP / Bund RT

LET OP! De patroondelen bevinden zich op verschillende raderbladen.

ATTENTION! Les pièces du patron sont réparties sur plusieurs planches.

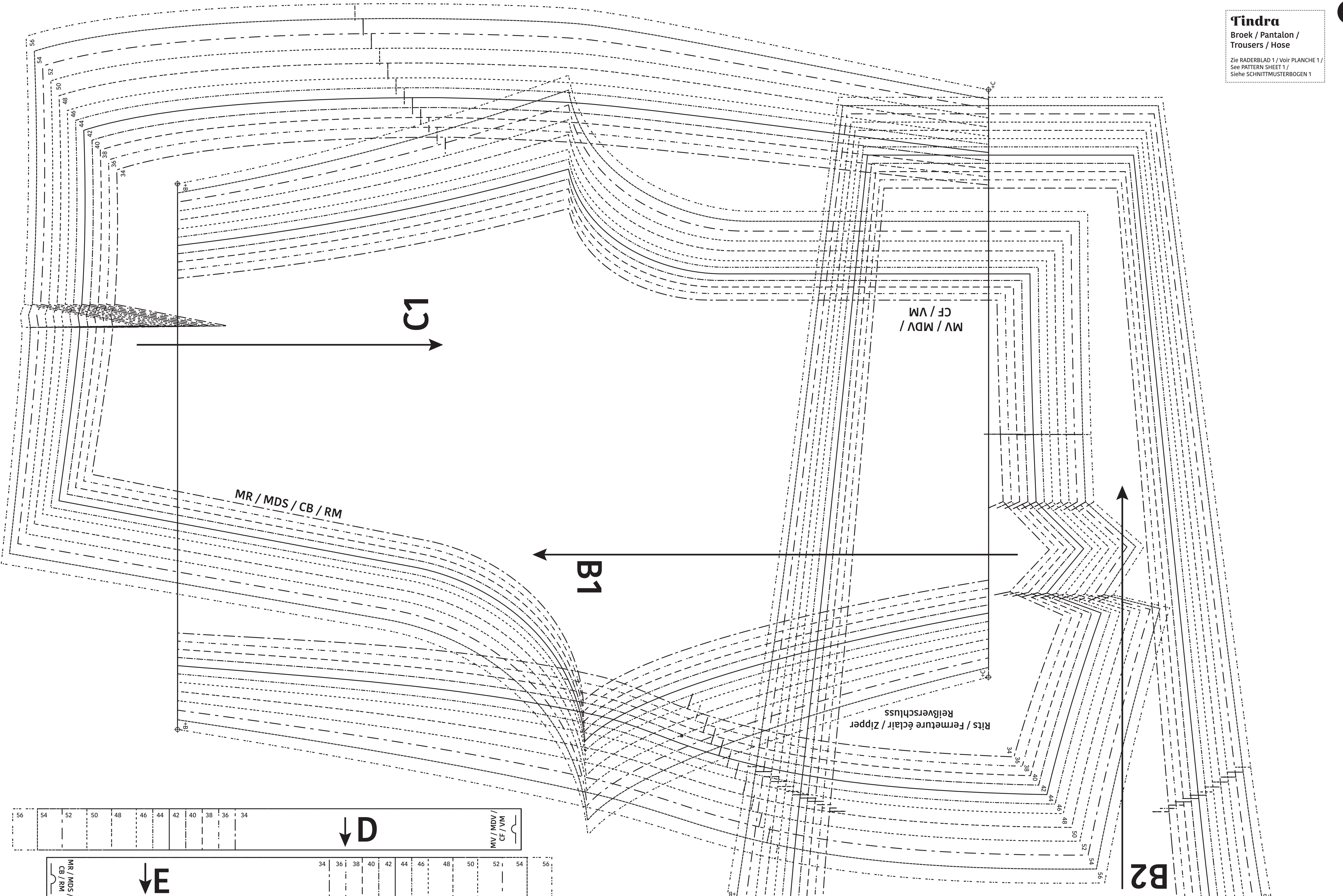
IMPORTANT! The pattern pieces are located on different pattern sheets.


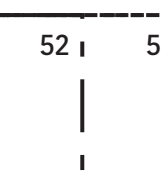
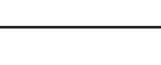
ACHTUNG! Die schnittteile befinden sich auf unterschiedlichen Schnittmusterbögen.



Tindra
Broek / Pantalon /
Trousers / Hose

Zie RADERBLAD 1 / Voir PLANCHE 1 /
See PATTERN SHEET 1 /
Siehe SCHNITTMUSTERBOGEN 1



56	54	52	50	48	46	44	42	40	38	36	34	 MV / MDV / CF / VM
 MR / MDS / CB / RM												
 E												

B2