

# Fanny

Broek / Pantalon /  
Trousers / Hose

Maten / Tailles / Sizes / Größen:

.....	92
.....	98
.....	104
.....	110
.....	116
.....	122 / 128
.....	134 / 140
.....	146 / 152
.....	158 / 164
.....	170 / 176

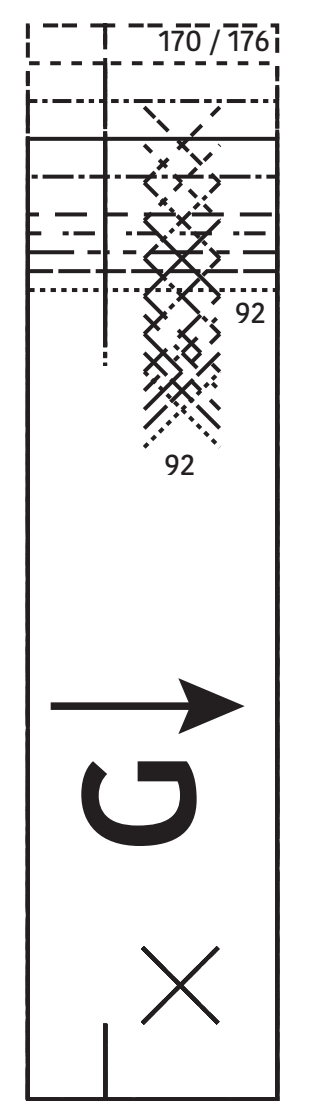
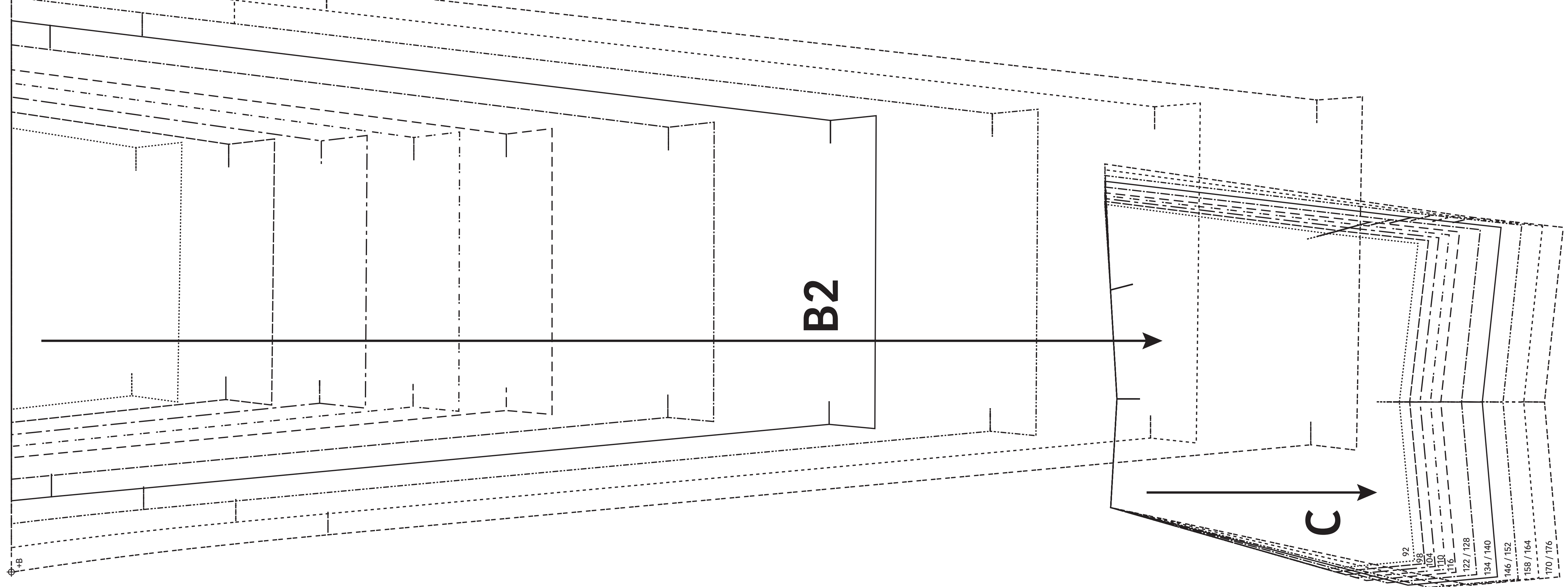
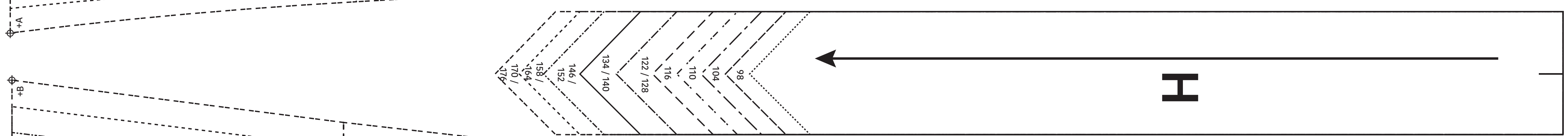
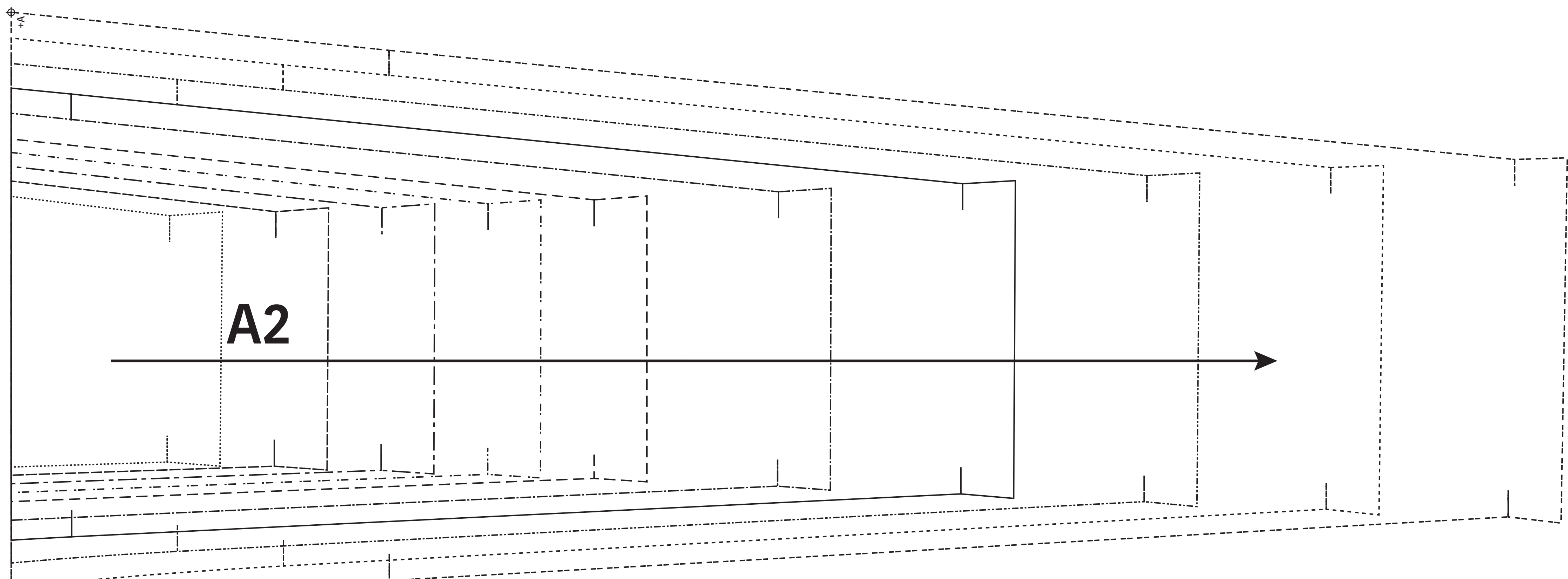
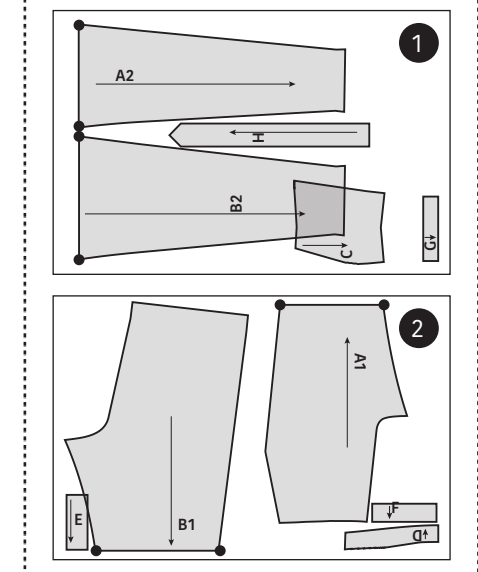
- Patroondelen / Pièces du patron /  
Pattern pieces / Schnittteile:
- A voorpand / devant / front panel / Vorderenteil
  - B rugpand / dos / back panel / Rückenteil
  - C zak / poche / pocket / Tasche
  - D beleg VP / parementure DV / facing FP / Besatz VT
  - E riemlusjes / passants / belt loops / Gürtelschlaufen
  - F bies / passepoil poche / trim / Paspel
  - G inkiijk / ouverture poche / outer pocket / Tascheneingriff
  - H strikint / ceinture / ribbon / Bindegürtel

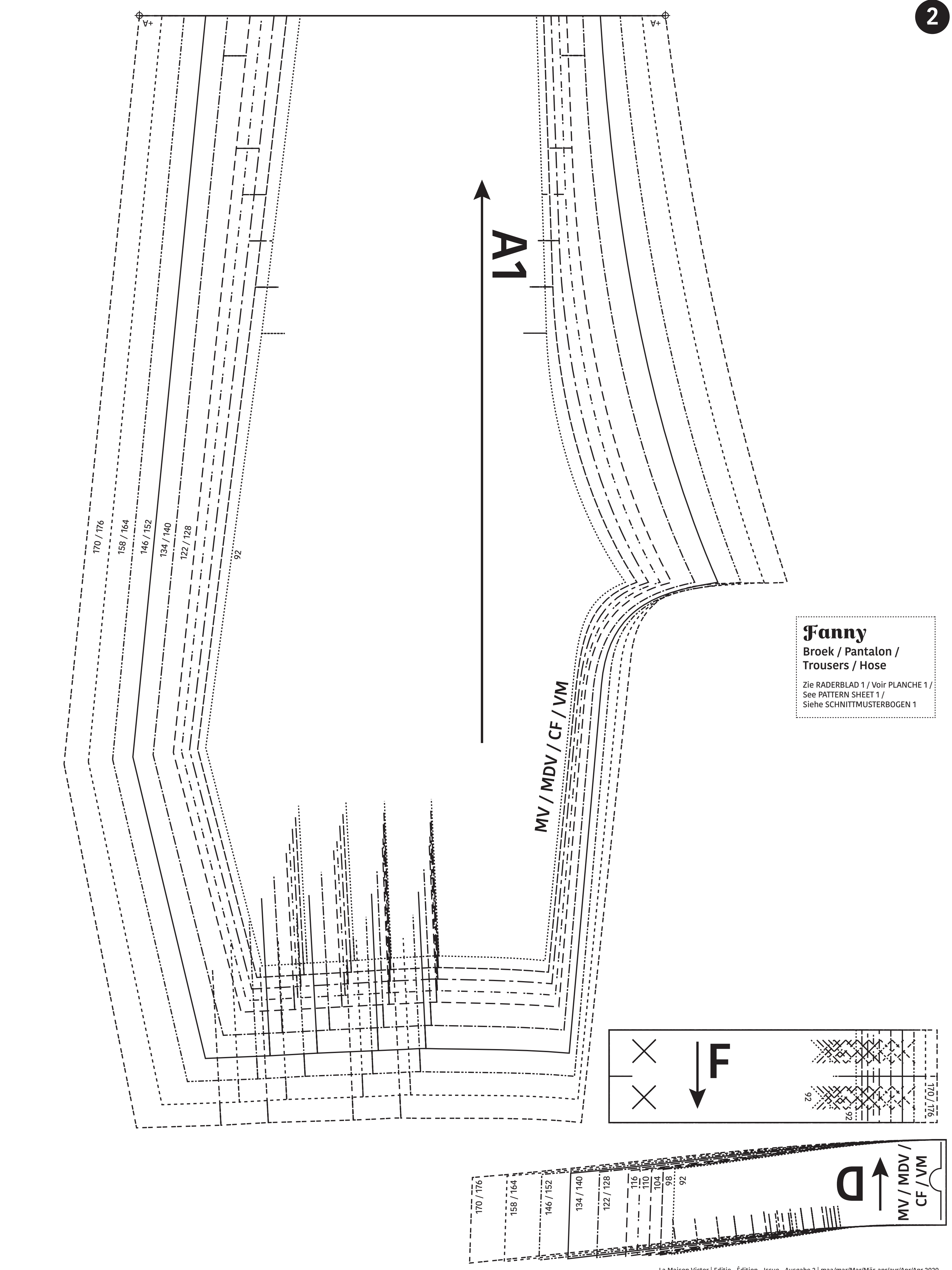
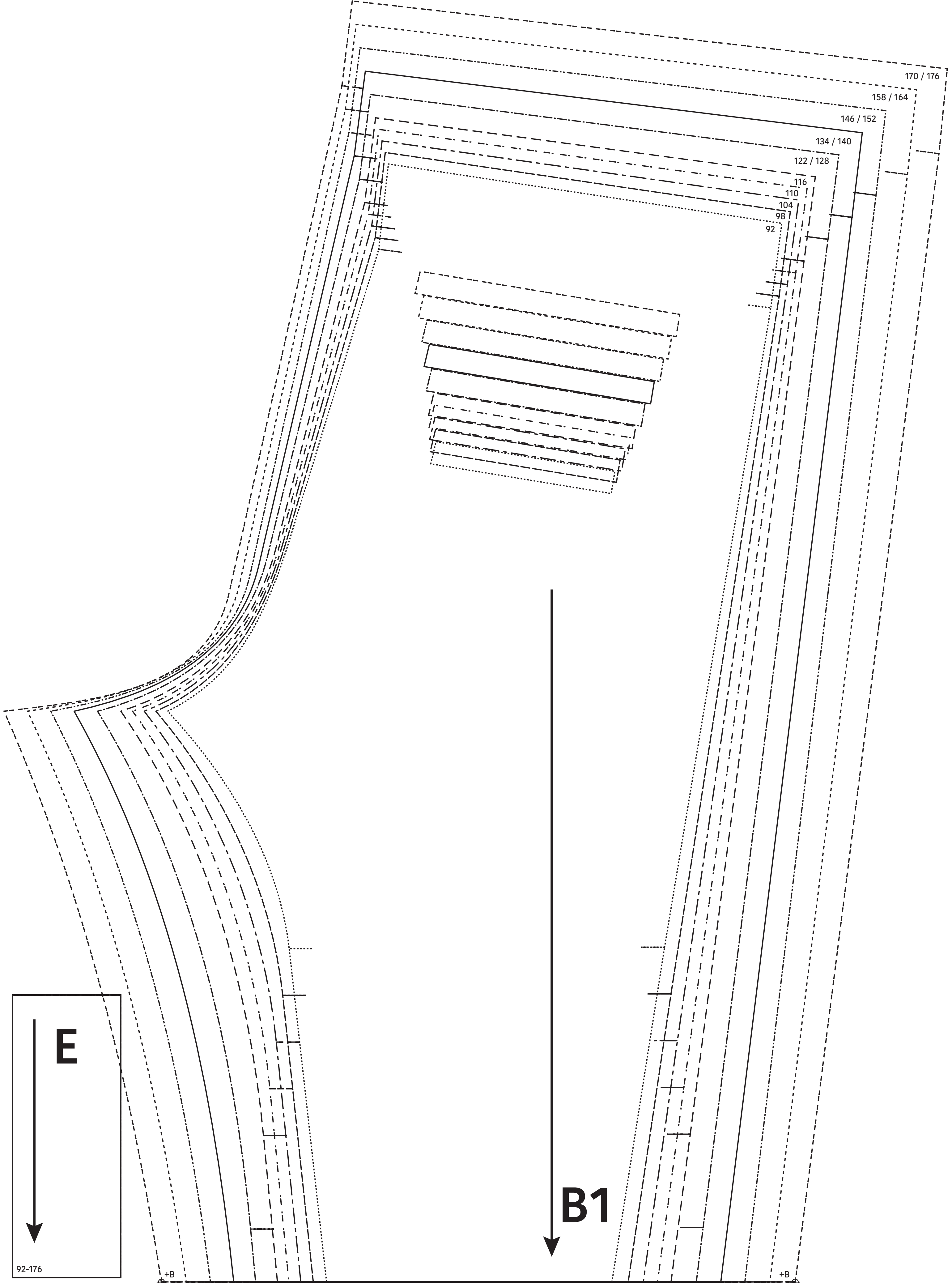
**LET OP!** De patroondelen bevinden zich op verschillende raderbladen.

**ATTENTION!** Les pièces du patron sont réparties sur plusieurs planches.

**IMPORTANT!** The pattern pieces are located on different pattern sheets.

**ACHTUNG!** Die schnittteile befinden sich auf unterschiedlichen Schnittmusterbögen.





**Fanny**  
 Broek / Pantalon /  
 Trousers / Hose  
 Zie RADERBLAD 1 / Voir PLANCHE 1 /  
 See PATTERN SHEET 1 /  
 Siehe SCHNITTMUSTERBOGEN 1