

Callie

Top

Maten / Tailles / Sizes:

.....	30
-----	32
-----	34
-----	36
-----	38
-----	40
-----	42
-----	44
-----	46
-----	48

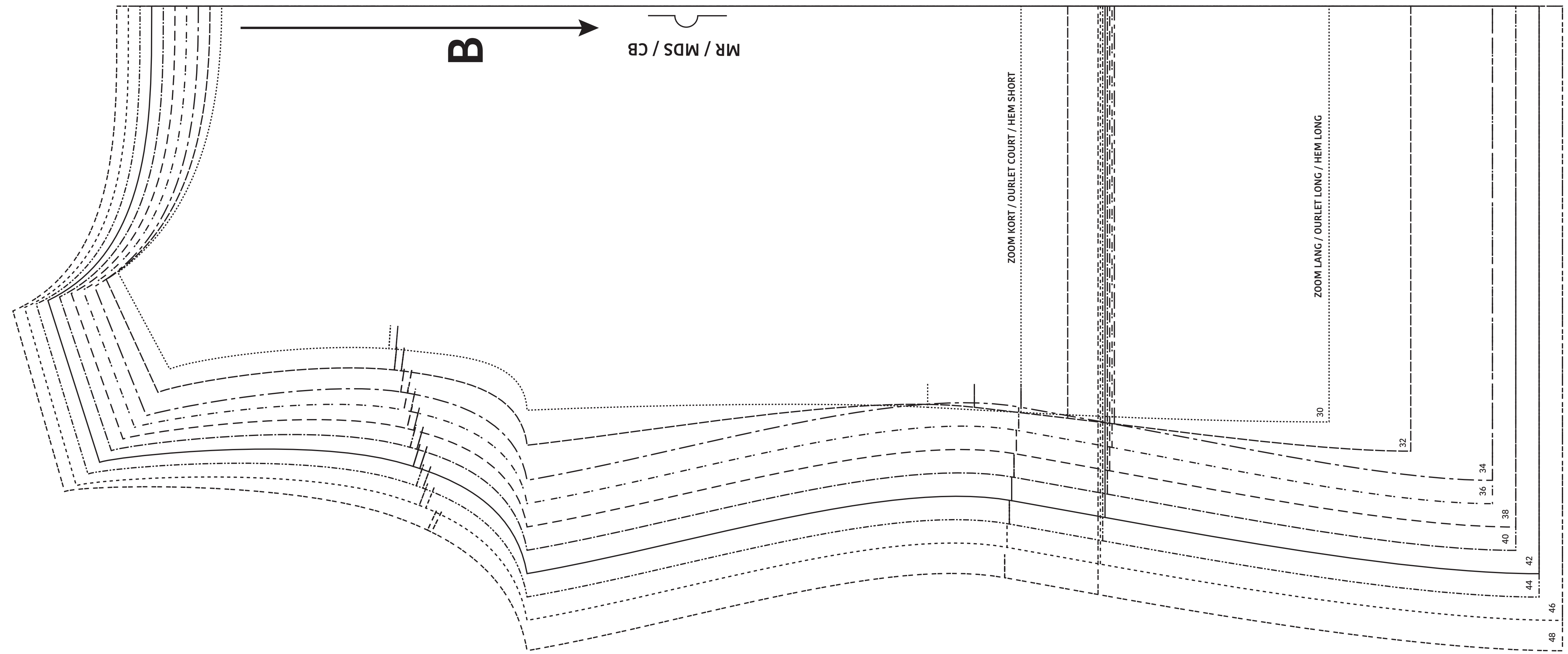
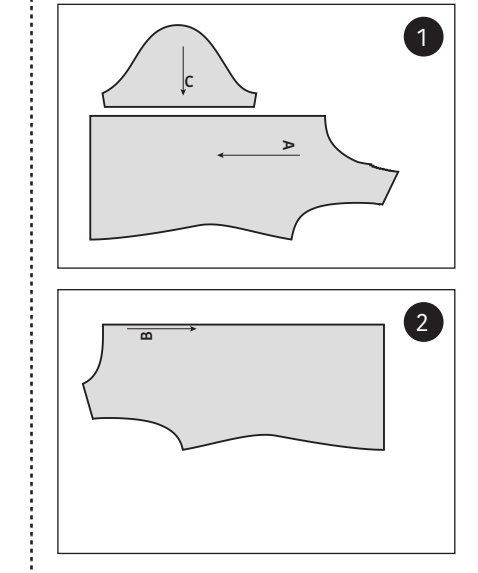
Patroondelen / Pièces du patron / Pattern pieces:

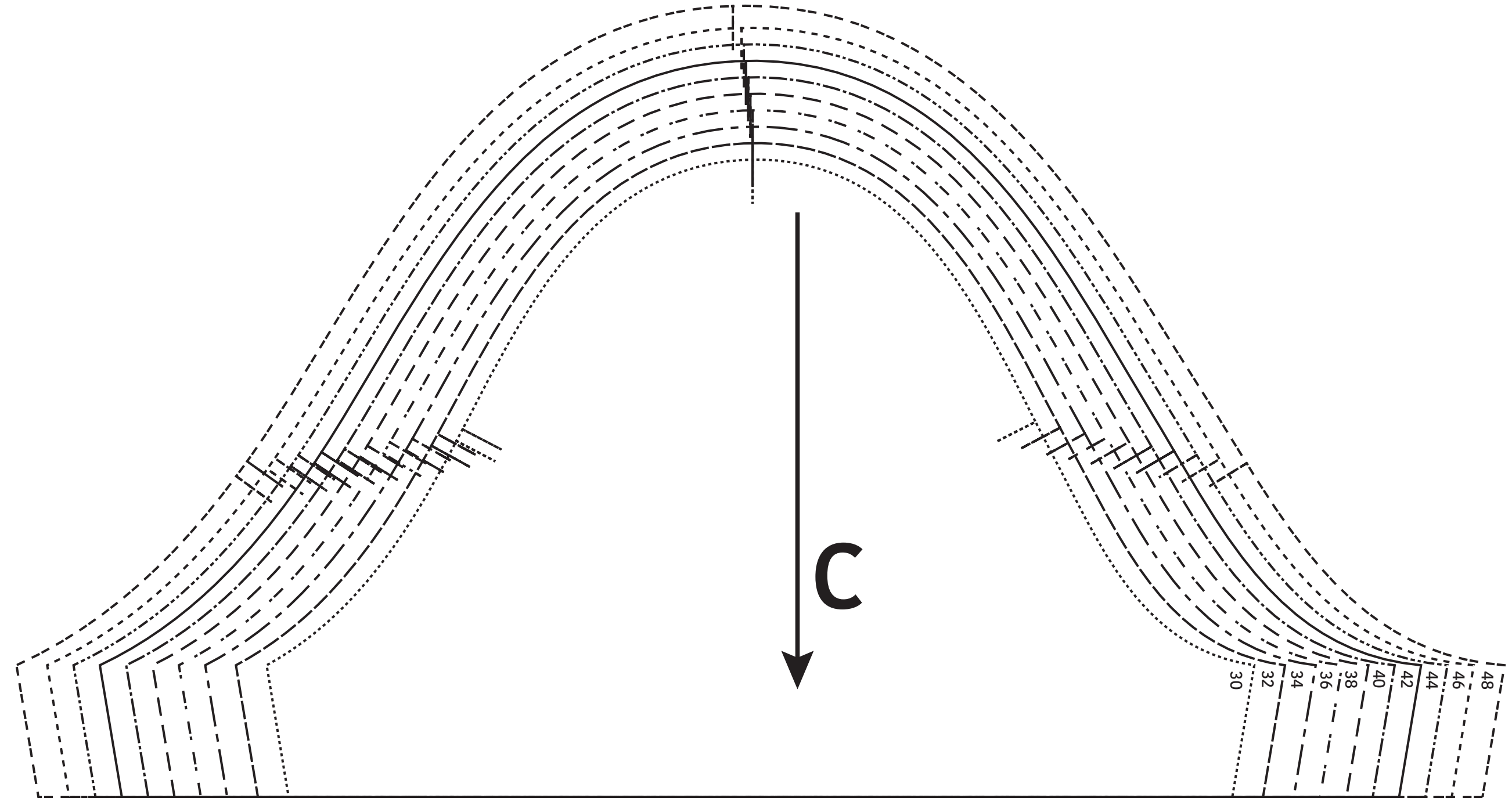
A voorpand / devant / front panel
B rugpand / dos / back panel
C mouw / manche / sleeve

LET OP! De patroondelen bevinden zich op verschillende raderbladen.

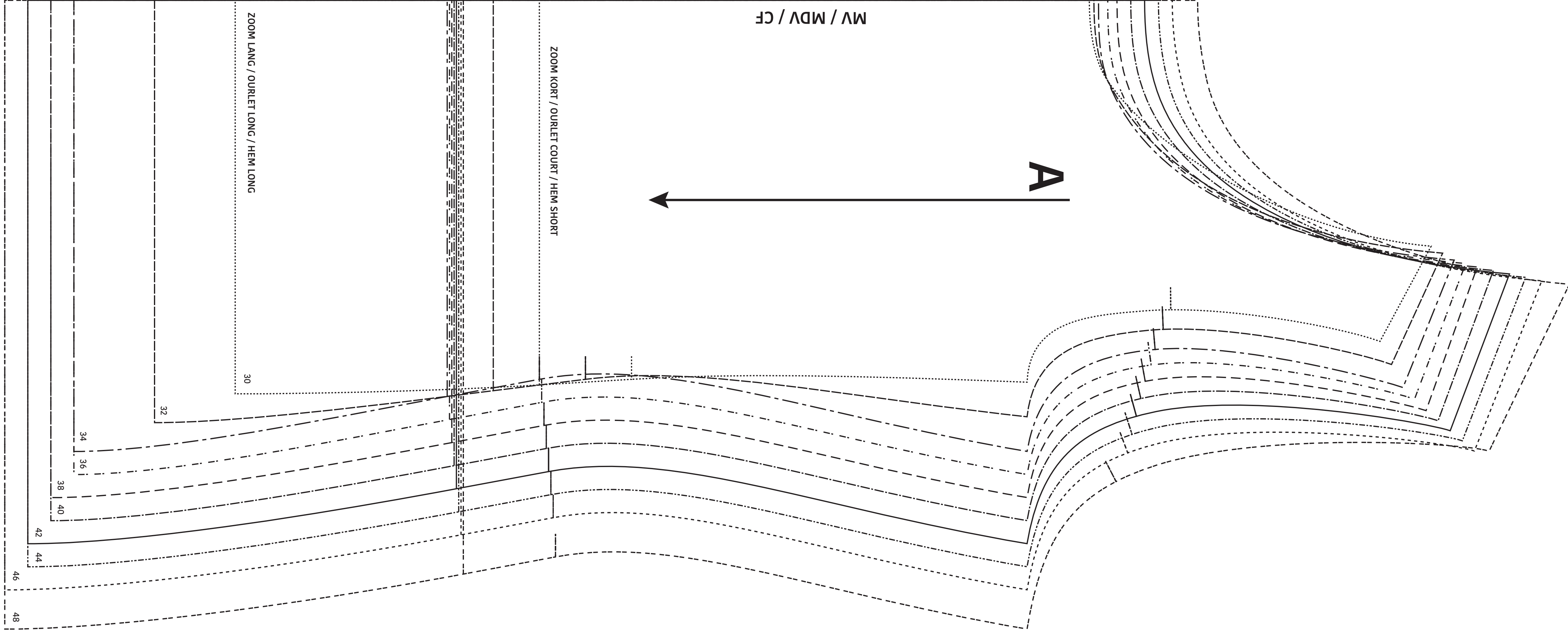
ATTENTION! Les pièces du patron sont réparties sur plusieurs planches.

IMPORTANT! The pattern pieces are located on different pattern sheets.





48
46
44
42
40
38
36
34
32
30



MV / MDV / CF

ZOOM KORT / OURLET COURT / HEM SHORT

ZOOM LANG / OURLET LONG / HEM LONG

A

48
46
44
42
40
38
36
34
32
30

Callie
Top
Zie RADERBLAD 1 / Voir PLANCHE 1 /
See PATTERN SHEET 1