

Camelia

Blouse

Maten / Tailles / Sizes:

---	34
---	36
---	38
---	40
---	42
---	44
---	46
---	48
---	50
---	52
---	54
---	56

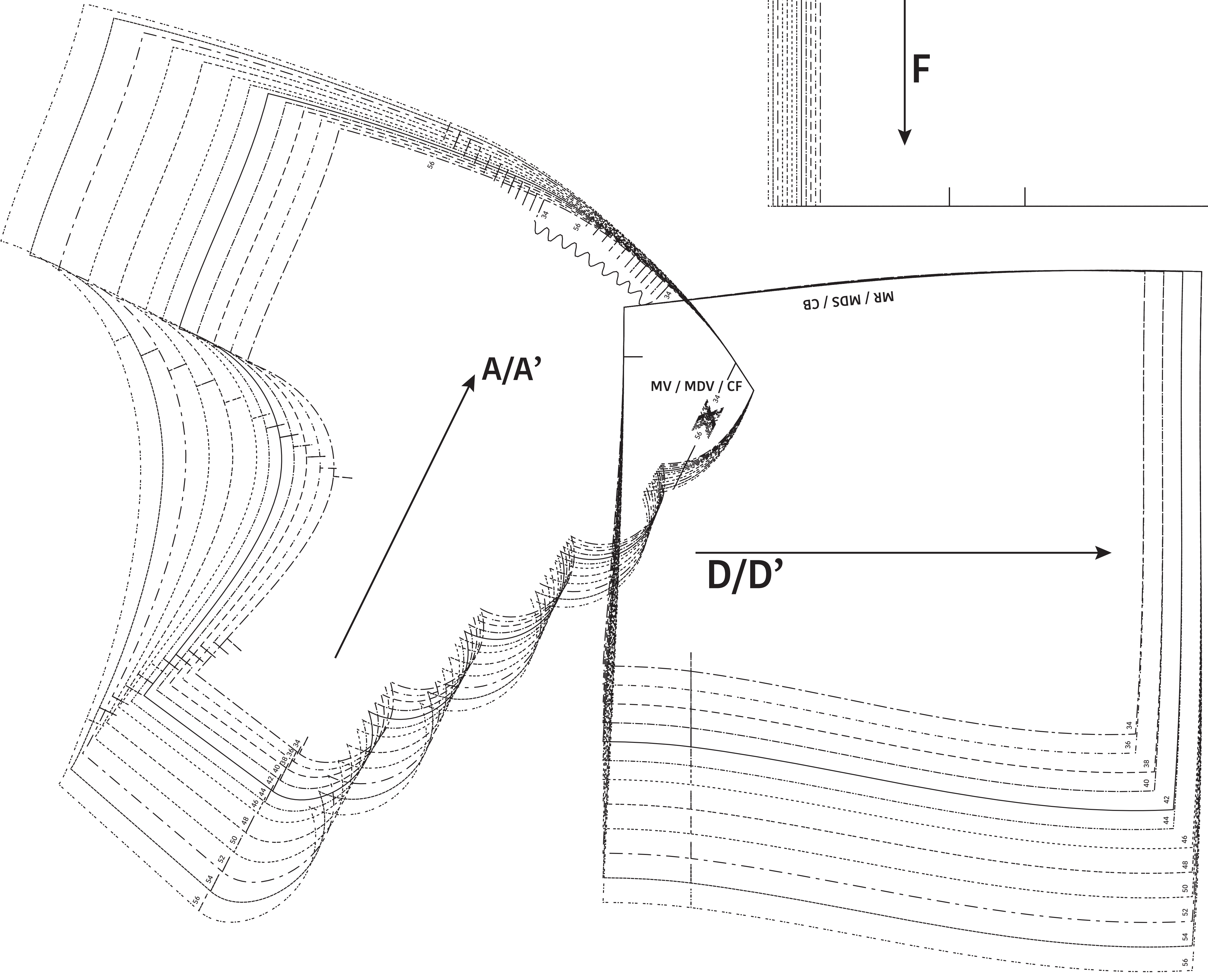
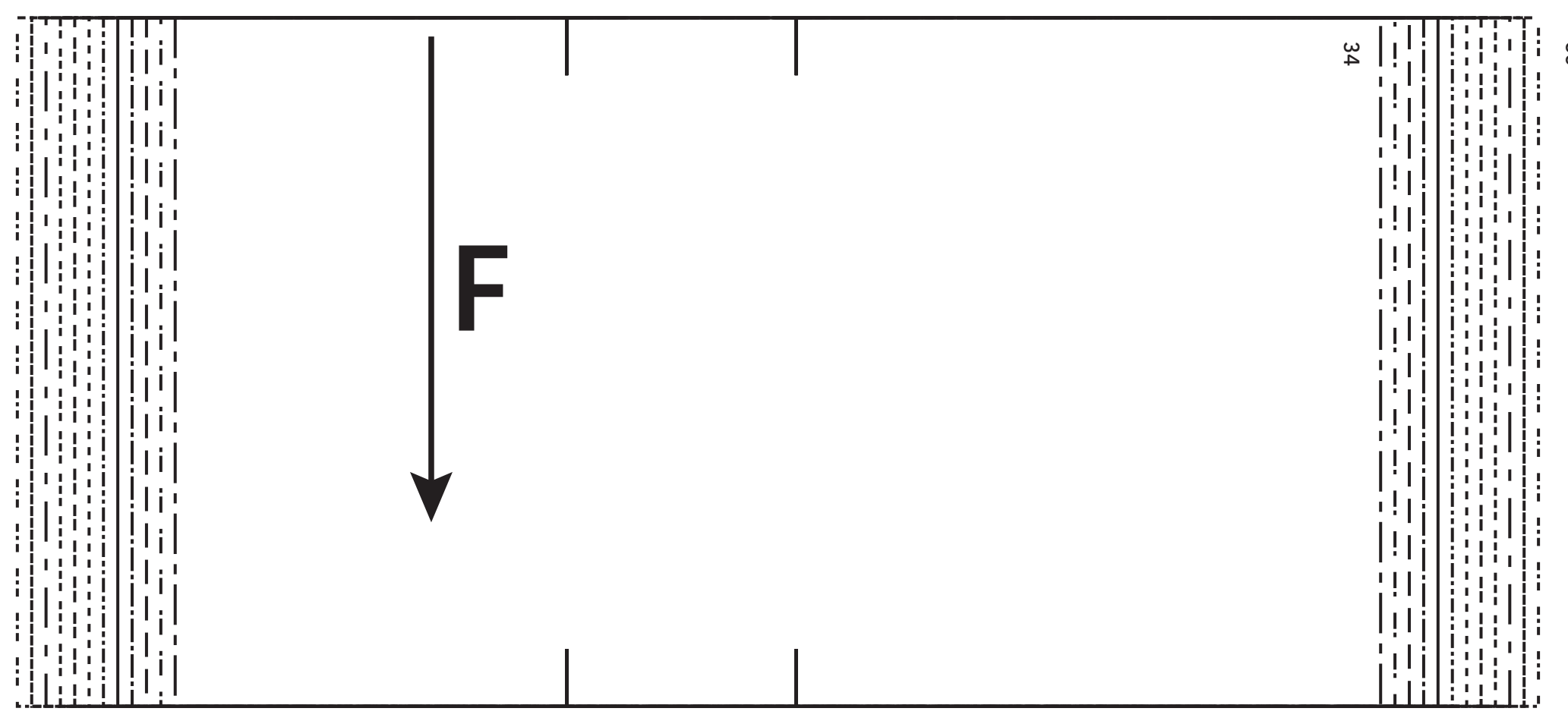
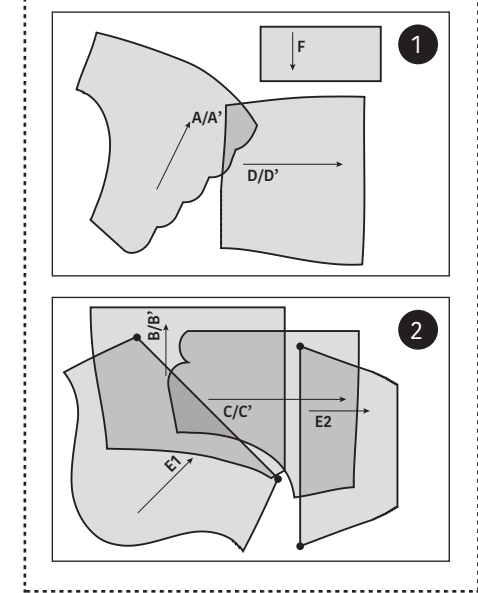
Patroondelen / Pièces du patron / Pattern pieces:

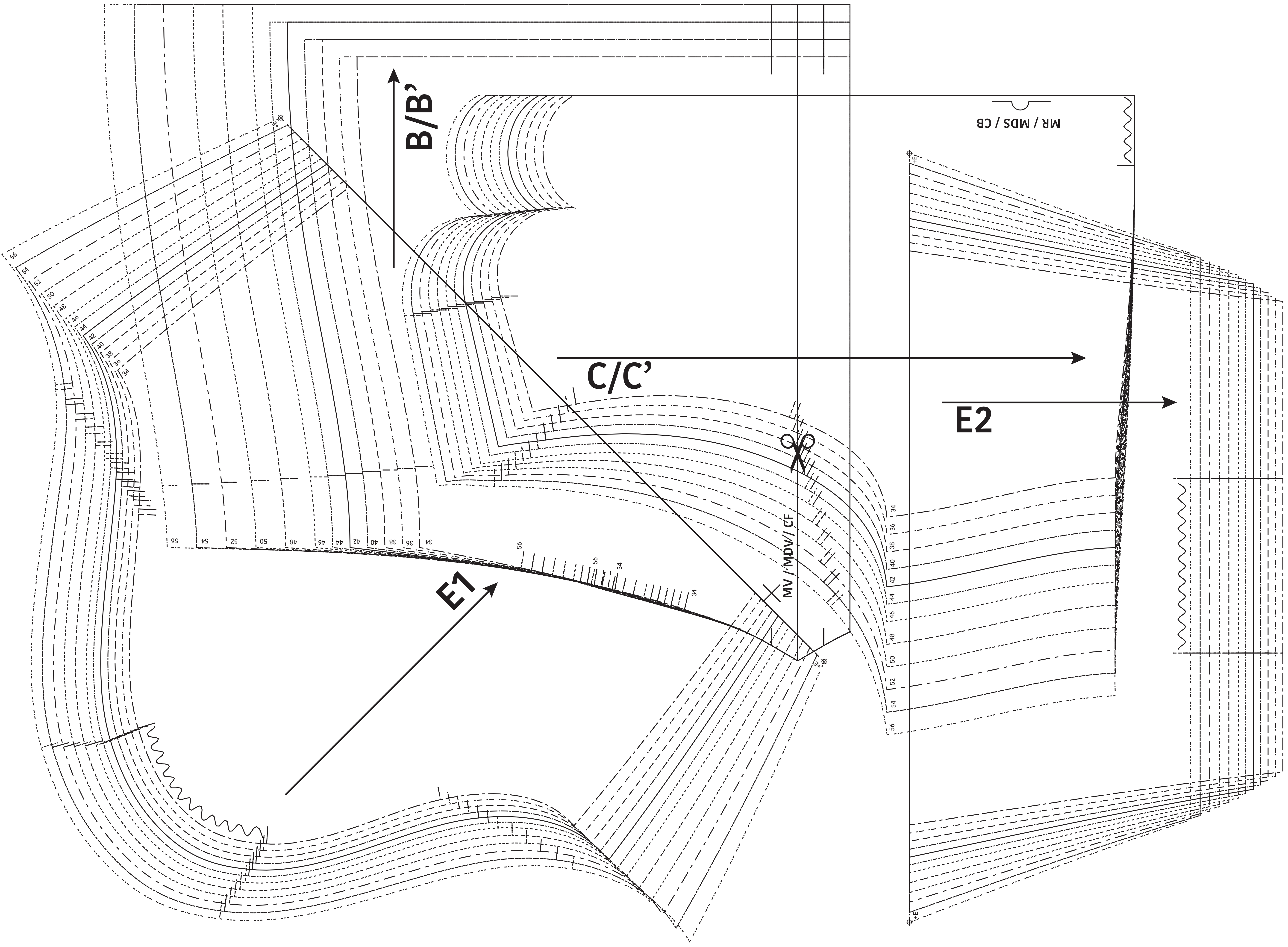
- A/A'** voorpand boven / devant haut / front panel
- B/B'** voorpand onder / devant bas / front panel bottom
- C/C'** rugpand boven / devant haut / yoke BP
- D/D'** rugpand onder / dos bas / back panel bottom
- E** mouw / manche / sleeve
- F** polsboord / bord manchette / wrist trim

LET OP! De patroondelen bevinden zich op verschillende raderbladen.

ATTENTION! Les pièces du patron sont réparties sur plusieurs planches.

IMPORTANT! The pattern pieces are located on different pattern sheets.





Camelia
 Blouse
 Zie RADERBLAD 1 / Voir PLANCHE 1 /
 See PATTERN SHEET 1