

Aria

Vest / Veste / Jacket

Maten / Tailles / Sizes:

---	34
---	36
---	38
---	40
---	42
---	44
---	46
---	48
---	50
---	52
---	54
---	56

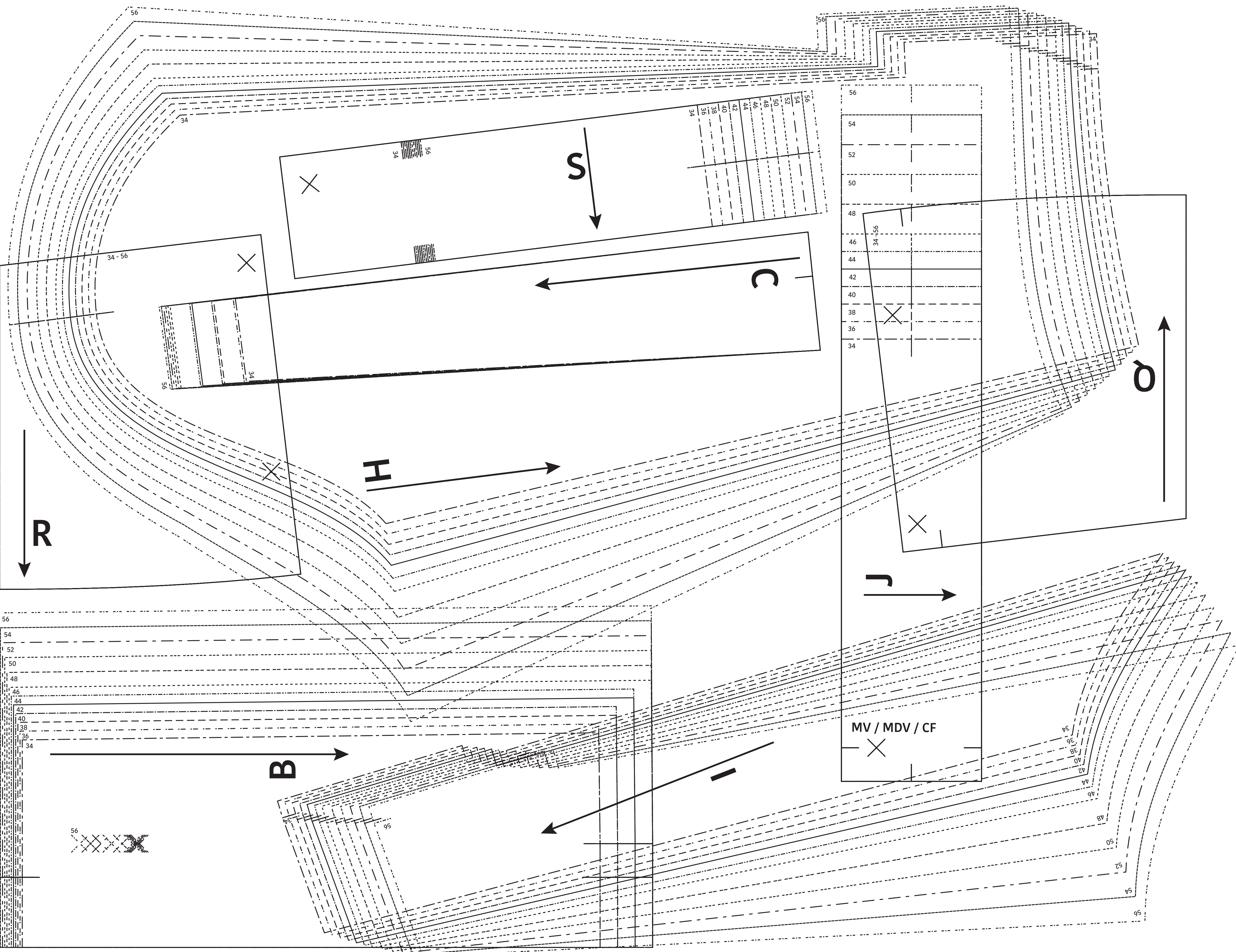
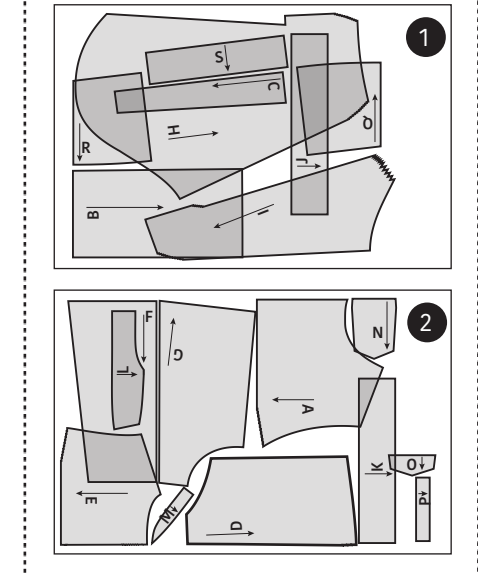
Patroondelen / Pièces du patron / Pattern pieces:

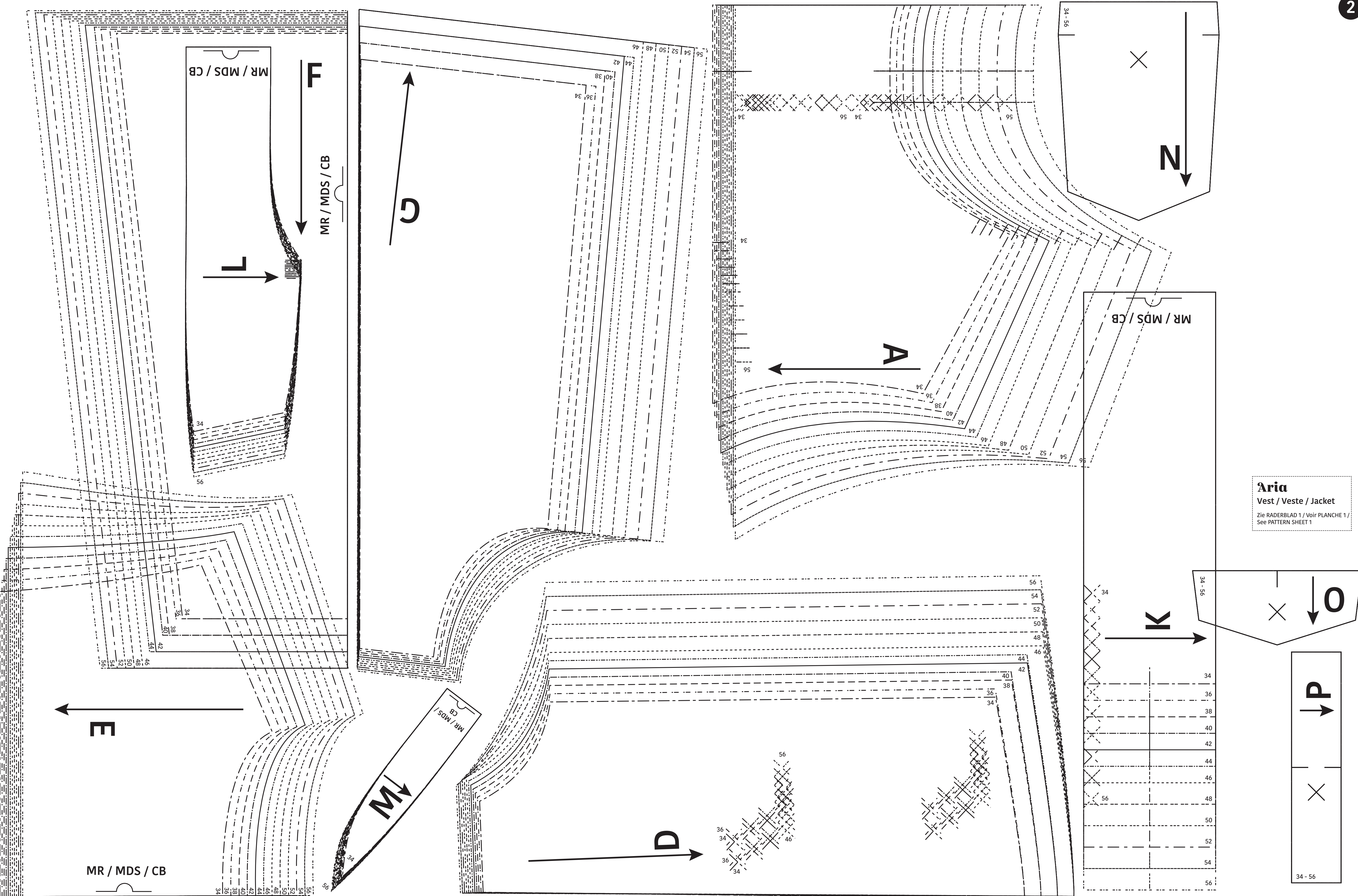
- A** voorpand boven / devant haut / front panel yoke
- B** voorpand voor / dos haut centre / left front panel
- C** voorpand midden / devant milieu / centre front panel
- D** voorpand zij / devant côté / right front panel
- E** rugpand boven / dos haut / back panel yoke
- F** rugpand midden / dos milieu / centre back panel
- G** rugpand zij / dos côté / side back panel
- H** mouw VP / manche DV / sleeve FP
- I** mouw RP / manche DS / sleeve BP
- J** zoomboord VP / liseré d'ourlet DV / hem band FP
- K** zoomboord RP / liseré d'ourlet DS / hem band BP
- L** kraag / col / collar
- M** staander / pied de col / collar stay
- N** zak / poche / pocket
- O** zakklep / rabat de poche / pocket flap
- P** knopenpat / patte à boutons / button placket
- Q** tegenzak / contre-poche / inner pocket bag
- R** inkijszak / ouverture de poche / pocket opening
- S** polsboord / bord manchette / cuff

LET OPI! De patroondelen bevinden zich op verschillende raderbladen.

ATTENTION! Les pièces du patron sont réparties sur plusieurs planches.

IMPORTANT! The pattern pieces are located on different pattern sheets.





Aria
 Vest / Veste / Jacket
 Zie RADERBLAD 1 / Voir PLANCHE 1 /
 See PATTERN SHEET 1