

Hfaz

Broek / Pantalon / Trousers

Maten / Tailles / Sizes:

- XXS
- XS
- S
- M
- L
- XL
- XXL
- XXXL

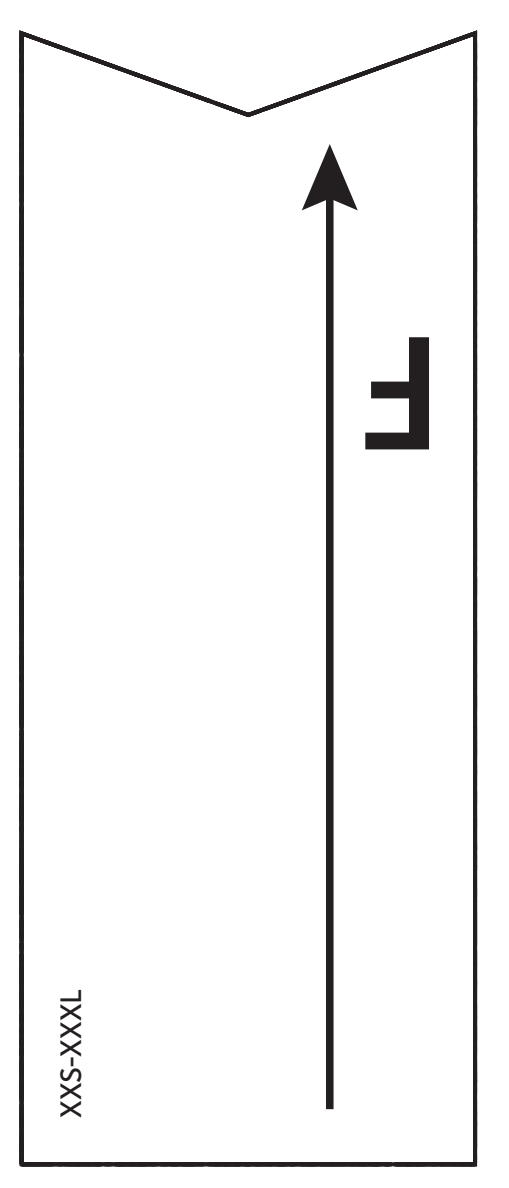
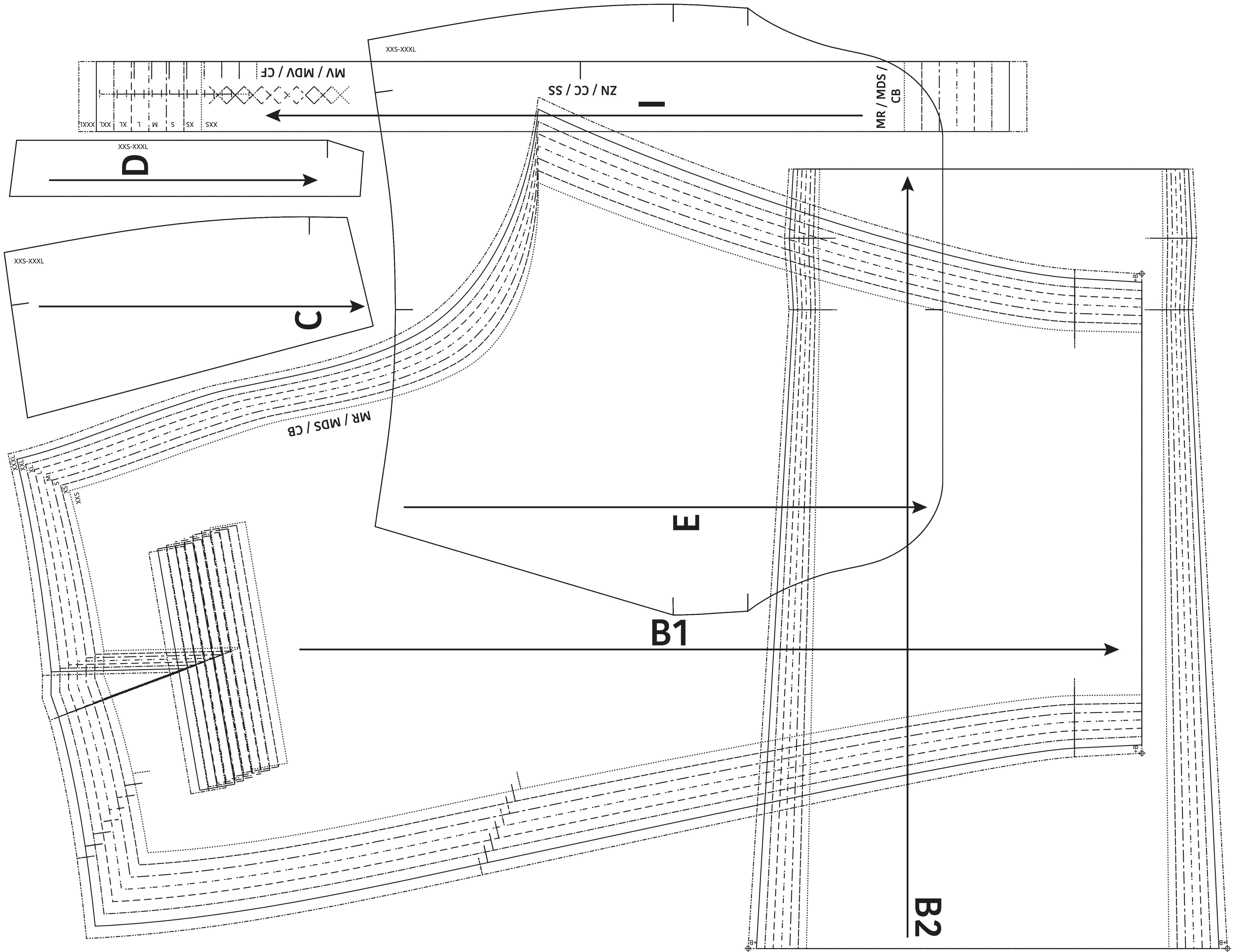
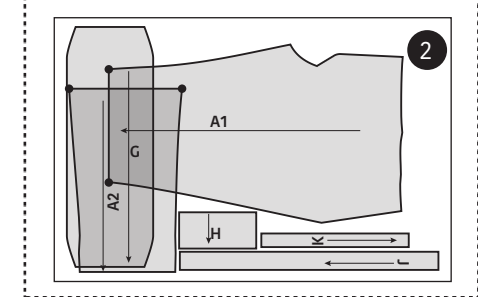
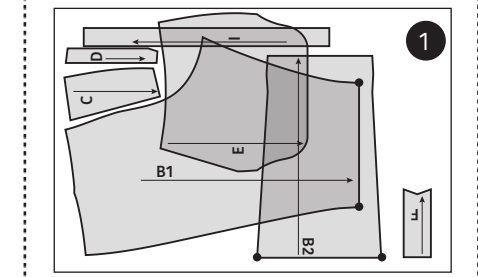
Patroondelen / Pièces du patron / Pattern pieces:

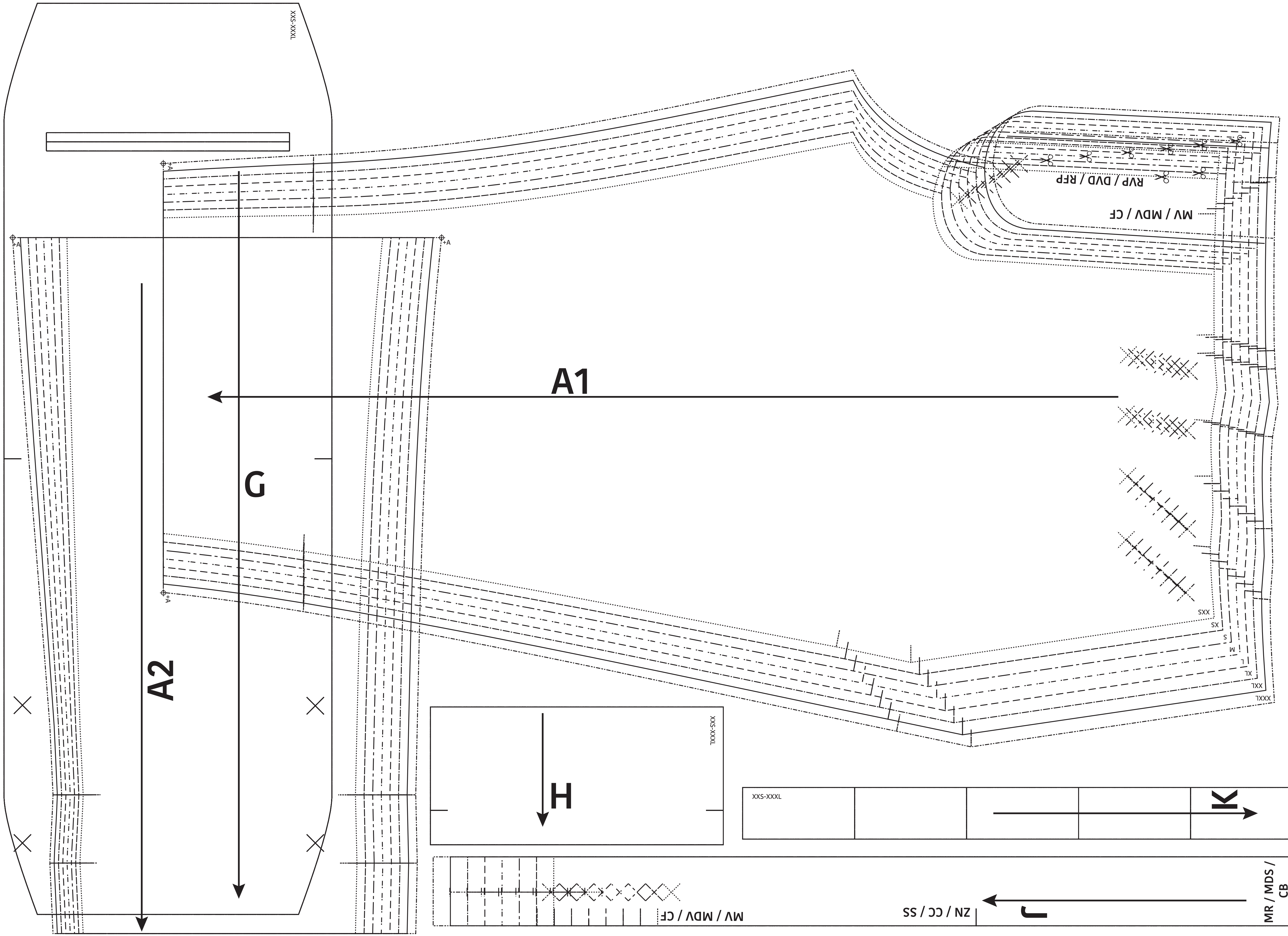
- A** voorpand / devant / front panel
- B** rugpand / dos / back panel
- C** inkiijk zak VP / ouverture poche DV / pocket opening FP
- D** beleg zak VP / parementure poche DV / pocket facing FP
- E** zak VP / poche DV / pocket FP
- F** gulp / braguette / fly
- G** zakvoering RP / doublure poche DS / pocket lining BP
- H** bies en inkiijk zak RP / liseré et ouverture poche DS / welt pieces and pocket opening BP
- I** tailleband rechts / ceinture droite / waistband RFP
- J** tailleband links / ceinture gauche / waistband LFP
- K** riemlusjes / passants / belt loops

LET OP! De patroondelen bevinden zich op verschillende raderbladen.

ATTENTION! Les pièces du patron sont réparties sur plusieurs planches.

IMPORTANT! The pattern pieces are located on different pattern sheets.





Haz
 Broek / Pantalon /
 Trousers
 Zie RADERBLAD 1 / Voir PLANCHE 1 /
 See PATTERN SHEET 1