

Johanna

Vest / Veste /
Cardigan

Maten / Tailles / Sizes:

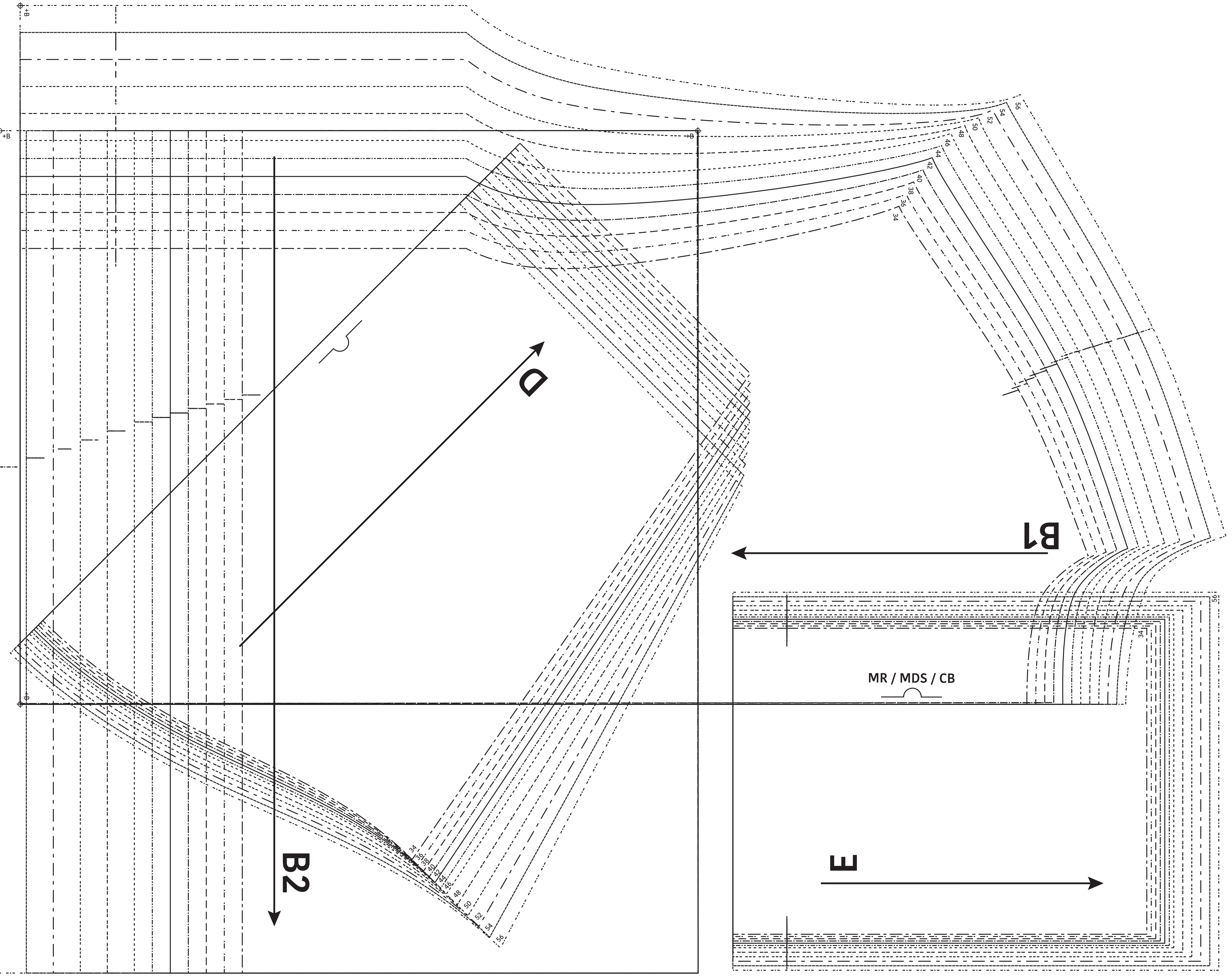
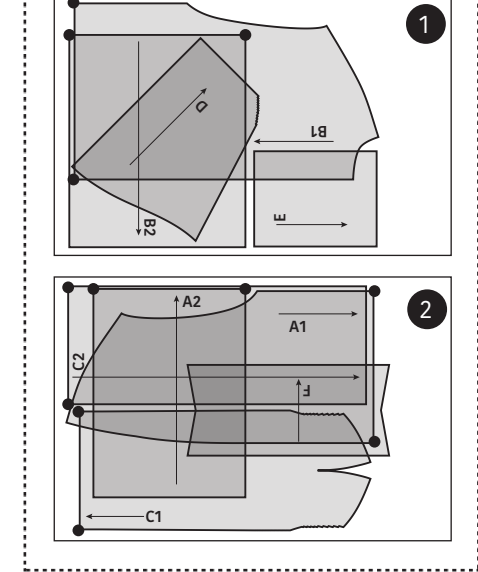
---	34
---	36
---	38
---	40
---	42
---	44
---	46
---	48
---	50
---	52
---	54
---	56

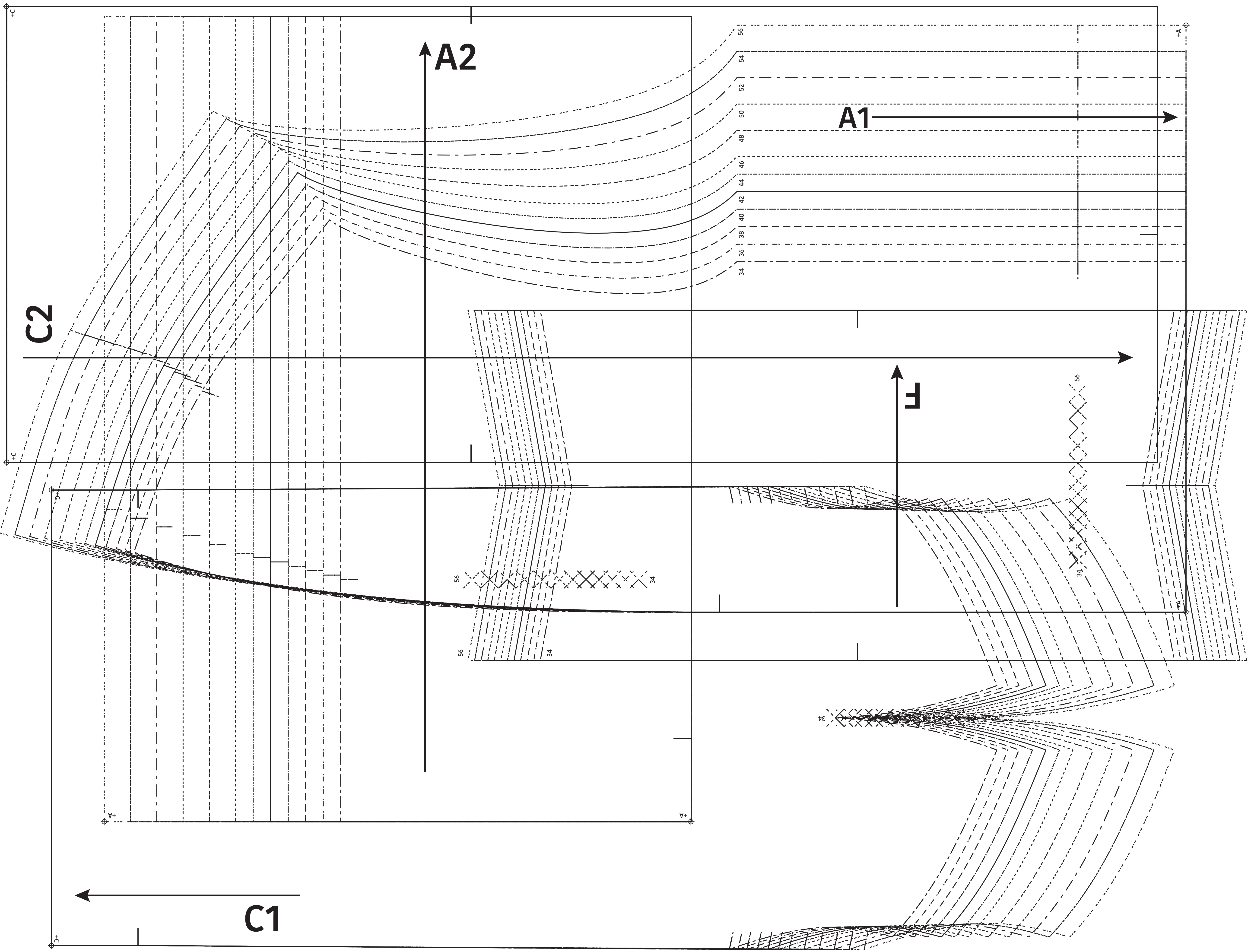
- Patroondelen / Pièces du patron / Pattern pieces:
- A voorpand / devant / front panel
 - B rugpand / dos / back panel
 - C taillestuk voorpand / empiècement taille devant / waist insert FP
 - D taillestuk rugpand / empiècement taille dos / waist insert BP
 - E beleg VP / parementure DV / facing FP
 - F beleg RP / parementure DS / facing BP

LET OP! De patroondelen bevinden zich op verschillende raderbladen.

ATTENTION! Les pièces du patron sont réparties sur plusieurs planches.

IMPORTANT! The pattern pieces are located on different pattern sheets.





Johanna
 Vest / Veste / Cardigan
 Zie RADERBLAD 1 / Voir PLANCHE 1 /
 See PATTERN SHEET 1