

Milano
Polo

Maten / Tailles / Sizes:

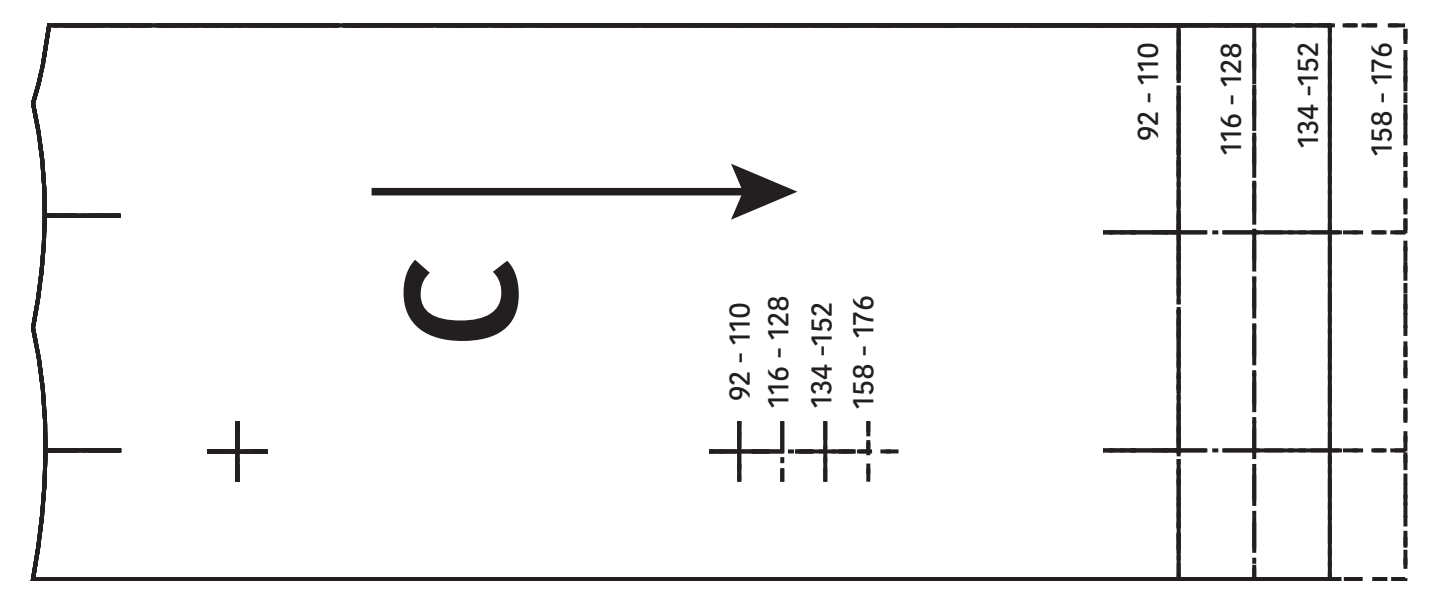
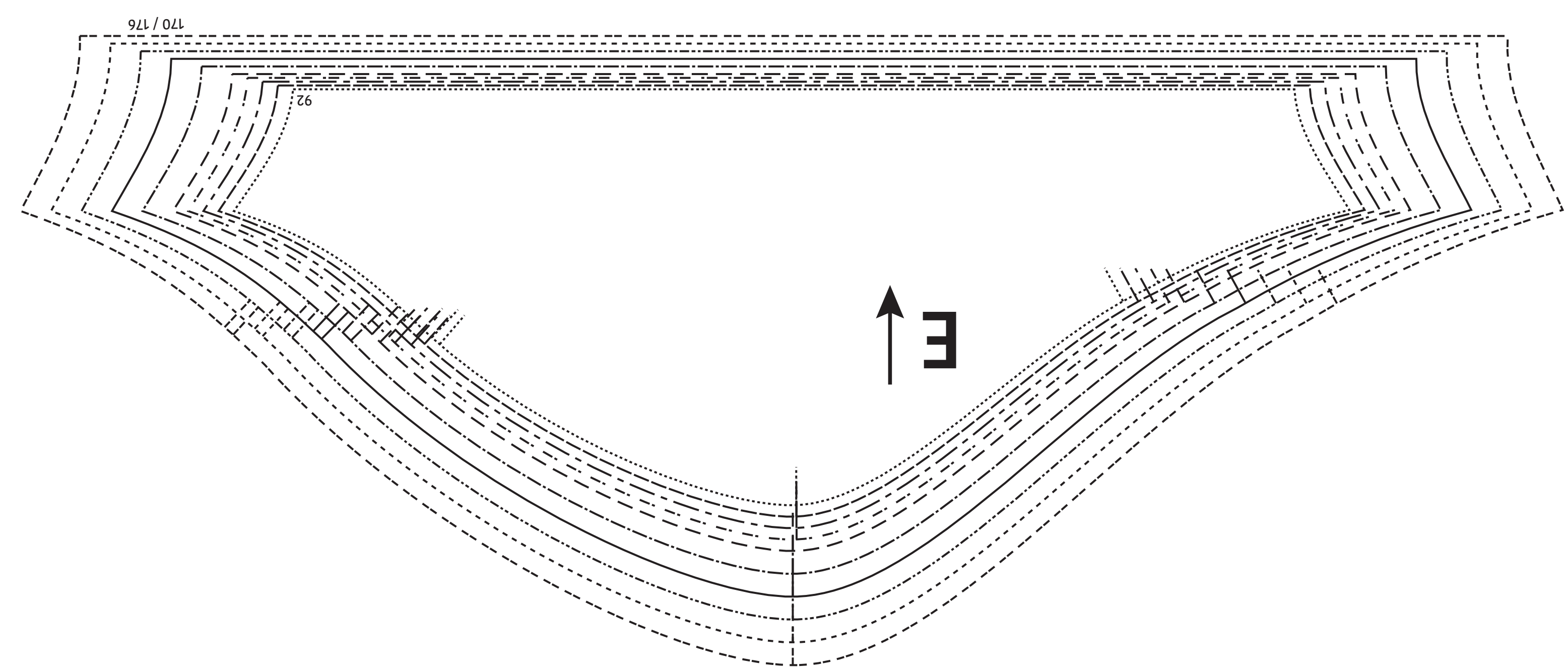
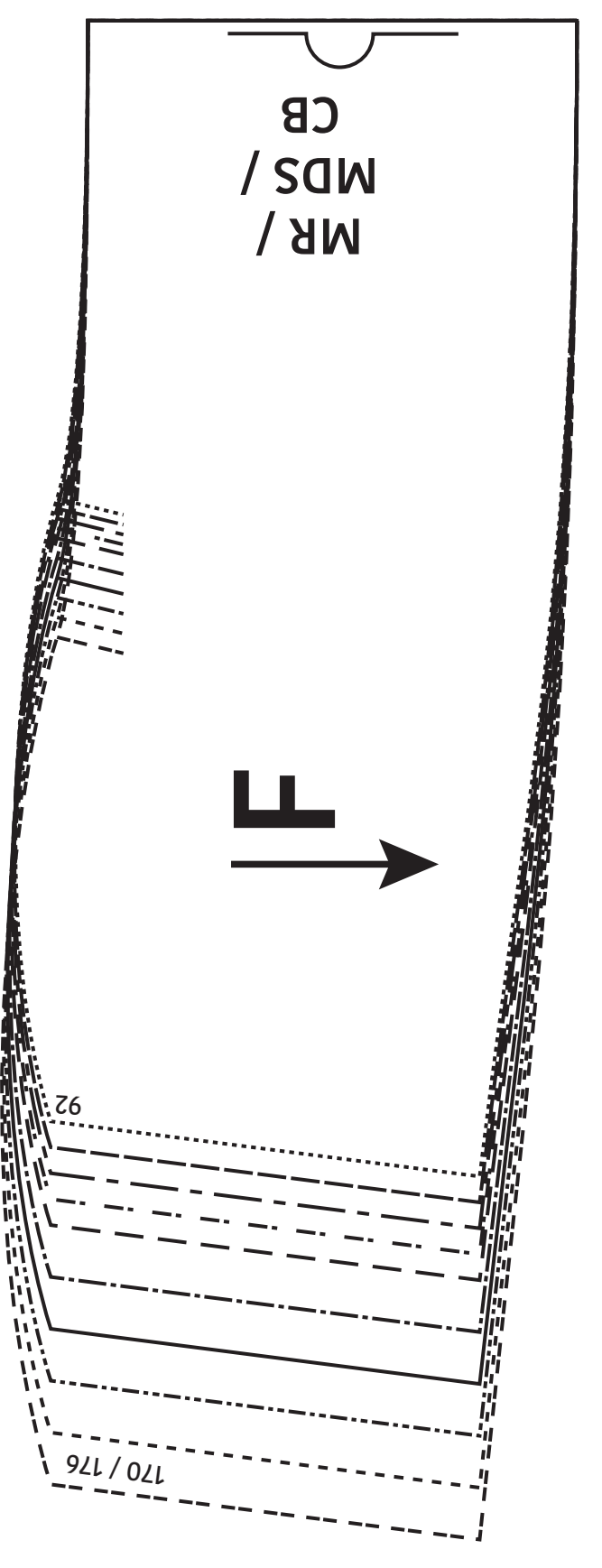
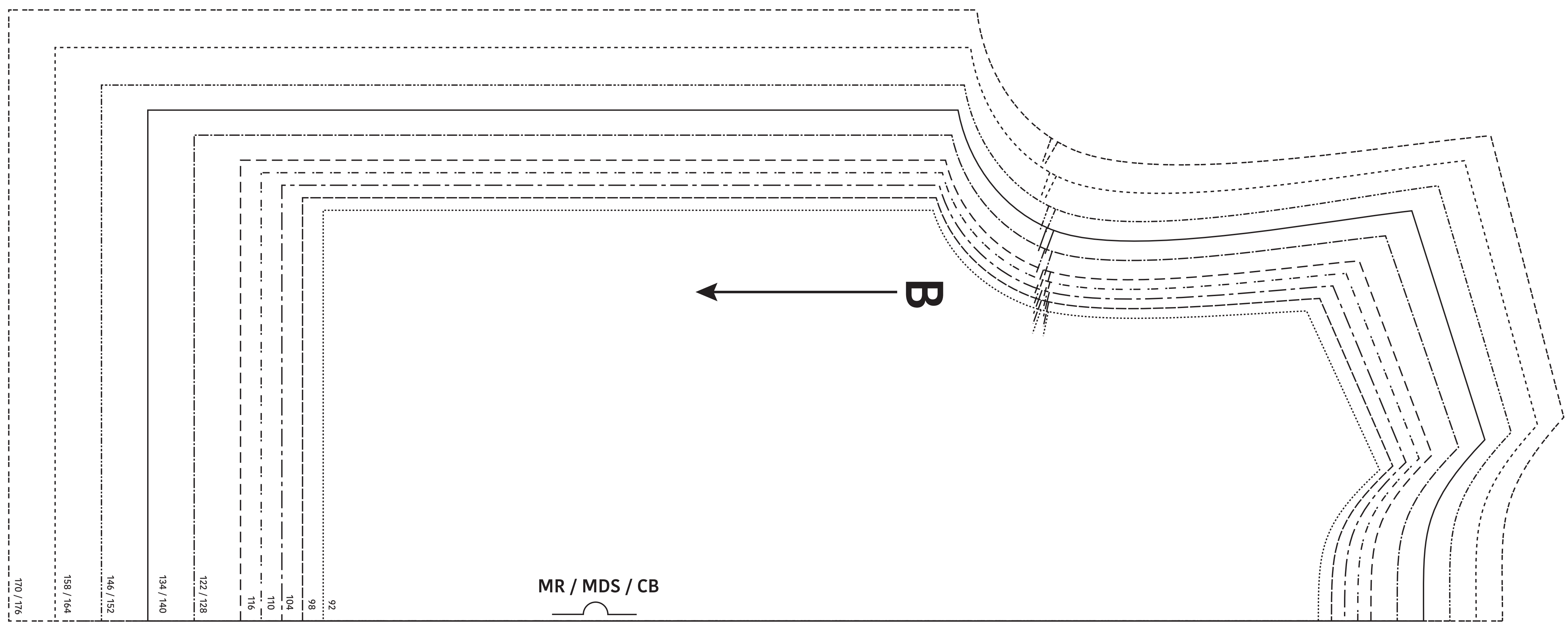
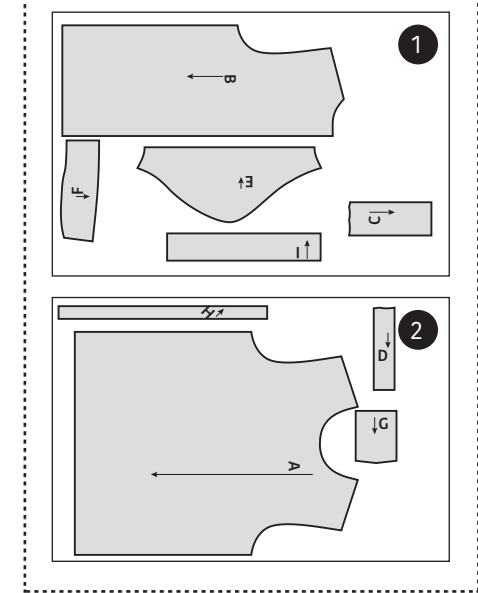
.....	92
-----	98
-----	104
-----	110
-----	116
-----	122 / 128
-----	134 / 140
-----	146 / 152
-----	158 / 164
-----	170 / 176

- Patroondelen / Pièces du patron / Pattern pieces:**
- A voorpand / devant / front panel
 - B ruggpand / dos / back panel
 - C polopat RVP / patte de fermeture DVD / polo placket RFP
 - D polopat LVP / patte de fermeture DVG / polo placket LFP
 - E mouw / manche / sleeve
 - F kraag / col / collar
 - G zak / poche / pocket
 - H kraagbies / liseré col / collar bias
 - I mouwboord / bord manchett / cuff

LET OP! De patroondelen bevinden zich op verschillende raderbladen.

ATTENTION! Les pièces du patron sont réparties sur plusieurs planches.

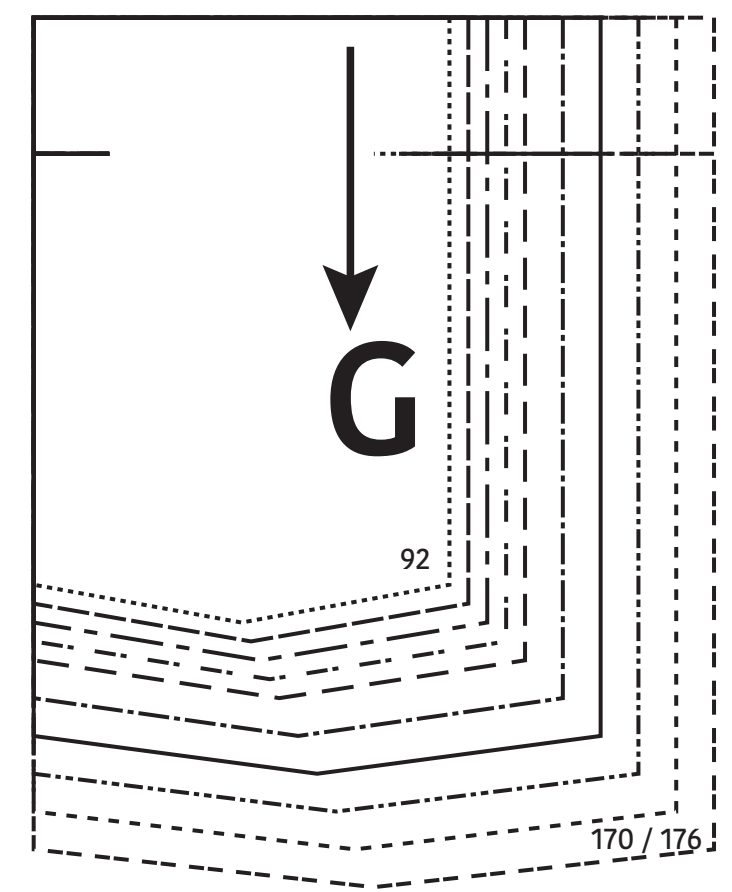
IMPORTANT! The pattern pieces are located on different pattern sheets.



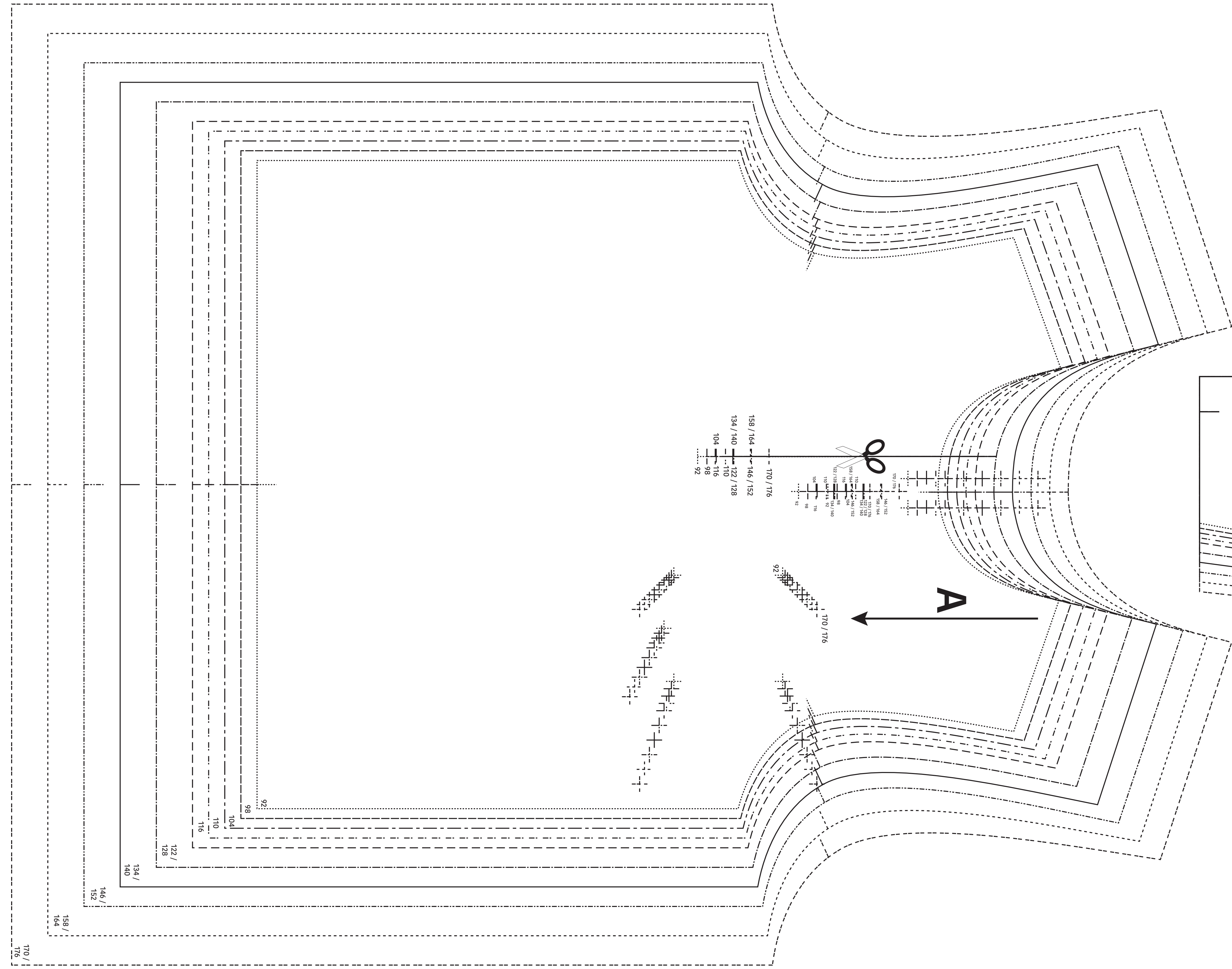
170 / 176
158 / 164
146 / 152
134 / 140
122 / 128
116
110
104
98
92



D	↓
92 - 110	
116 - 128	
134 - 152	
158 - 176	



Milano
 Polo
 Zie RADERBLAD 1 / Voir PLANCHE 1 /
 See PATTERN SHEET 1



170 / 176
158 / 164
146 / 152
134 / 140
122 / 128
116
110
104
98
92



146 / 152
134 / 140
122 / 128
116
110
104
98
92

170 / 176
158 / 164
146 / 152
134 / 140
122 / 128
116
110
104
98
92