

Alexandra

Short / Shorts

Maten / Tailles / Sizes:

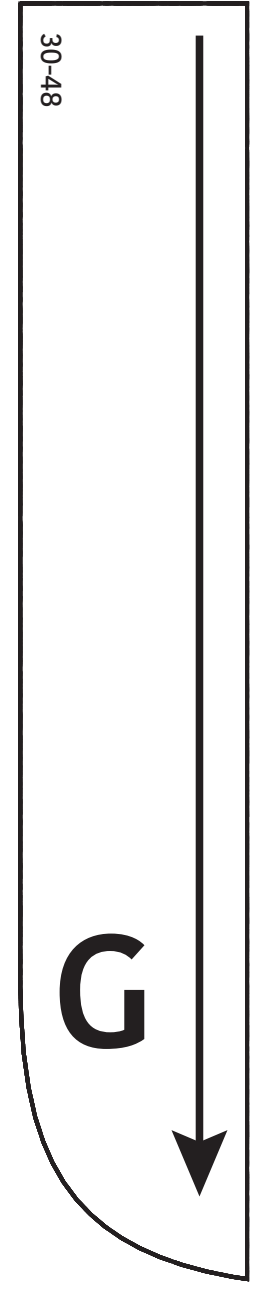
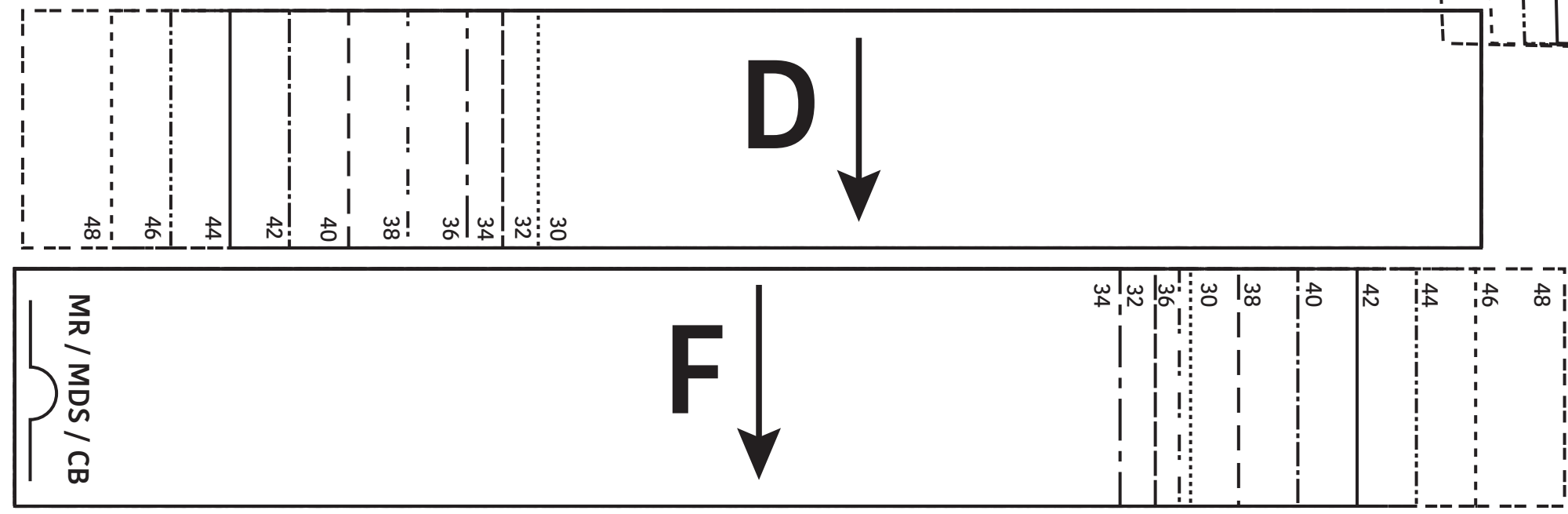
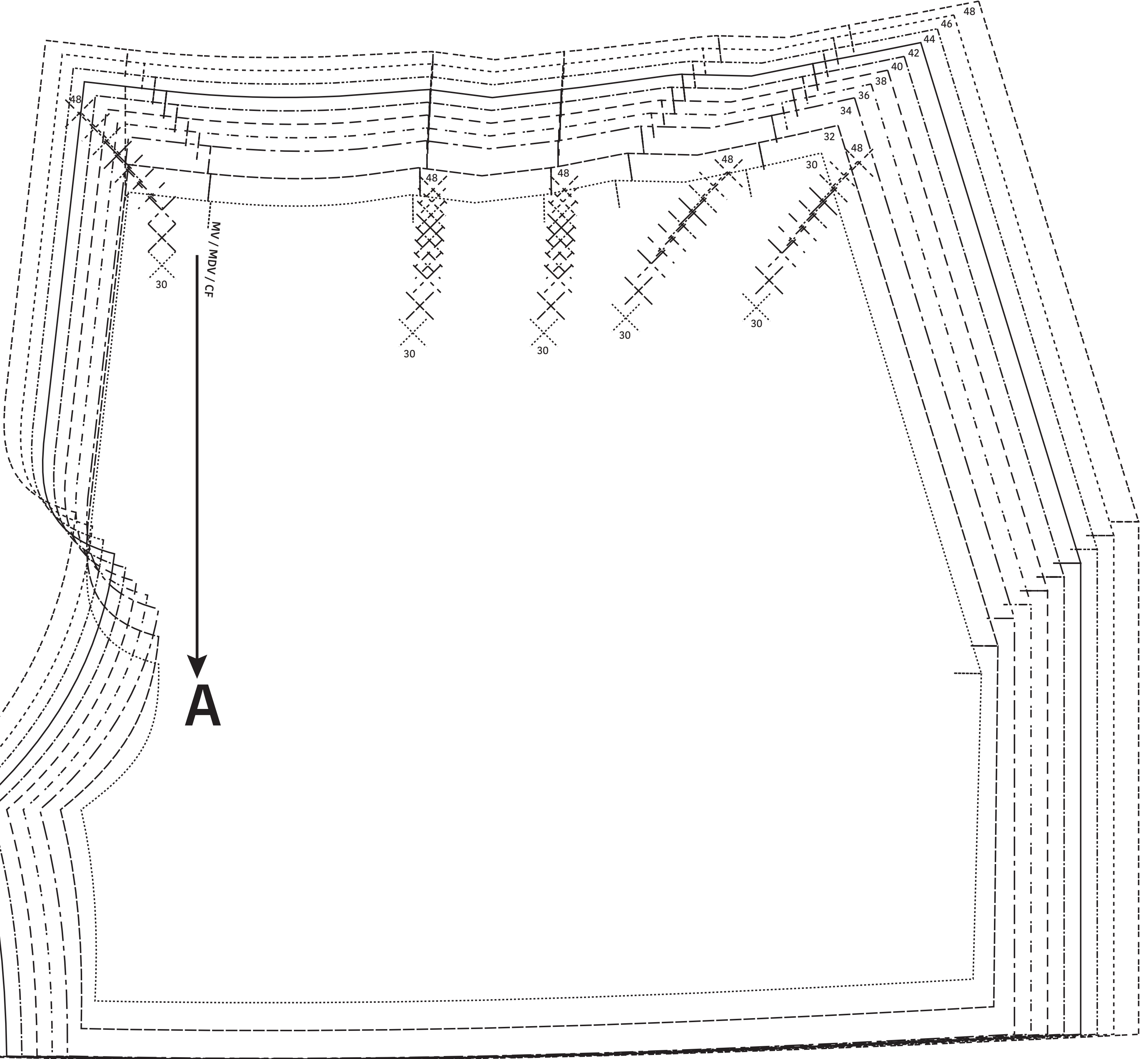
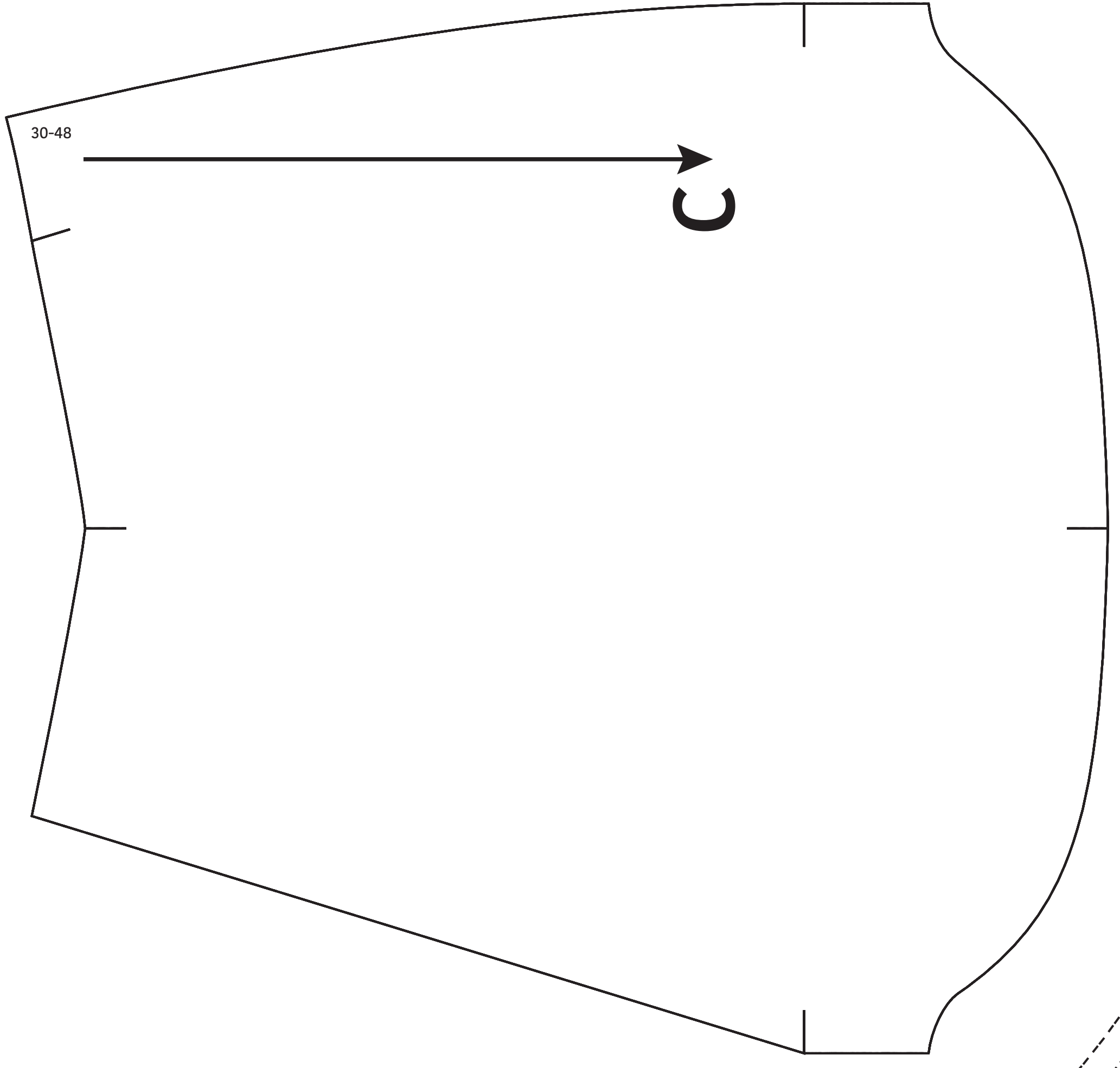
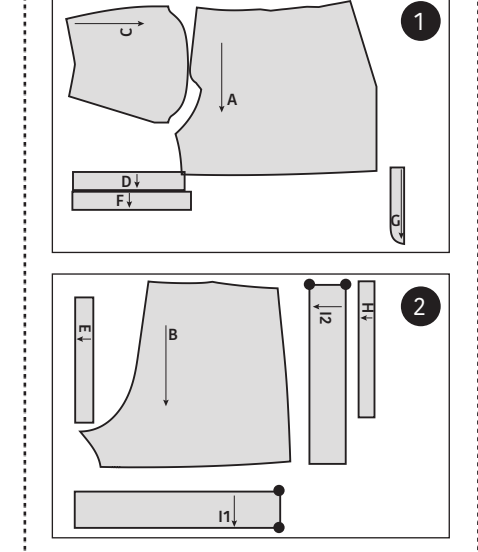
.....	30
-----	32
-----	34
-----	36
-----	38
-----	40
-----	42
-----	44
-----	46
-----	48

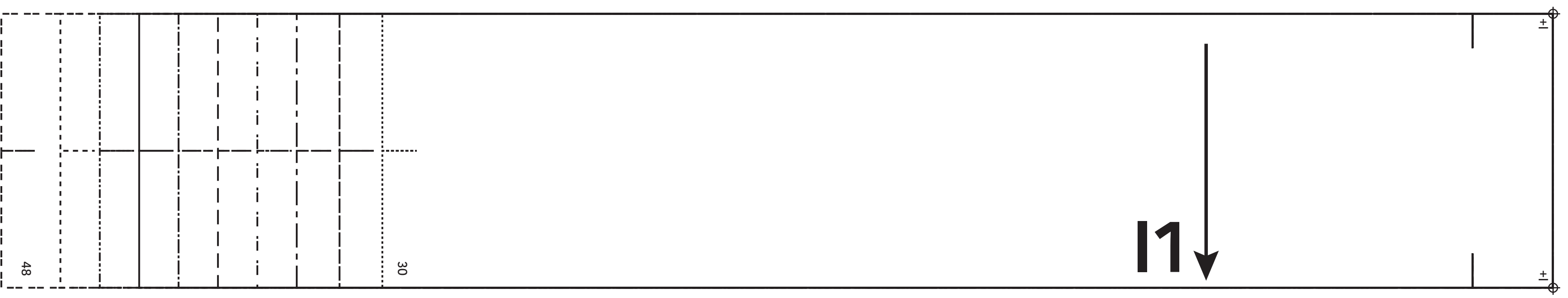
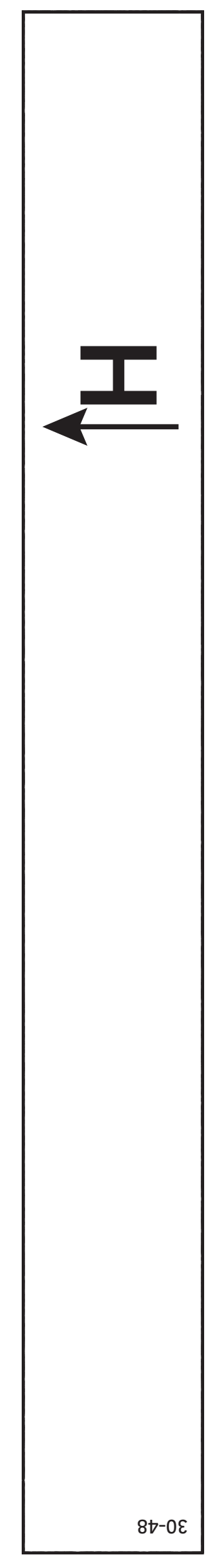
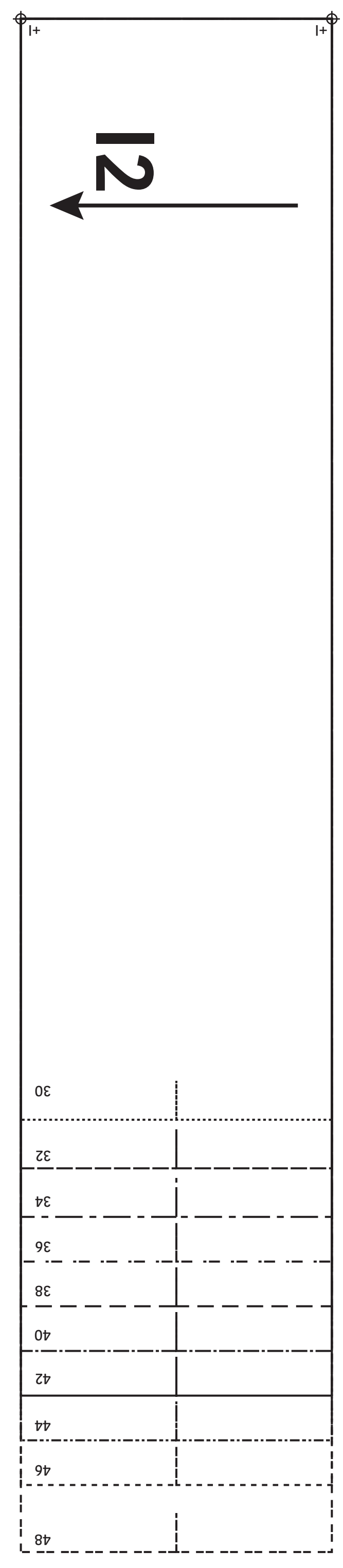
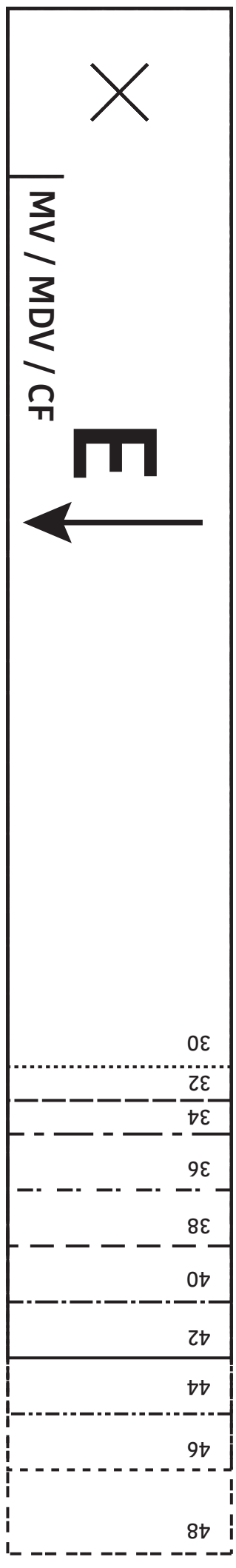
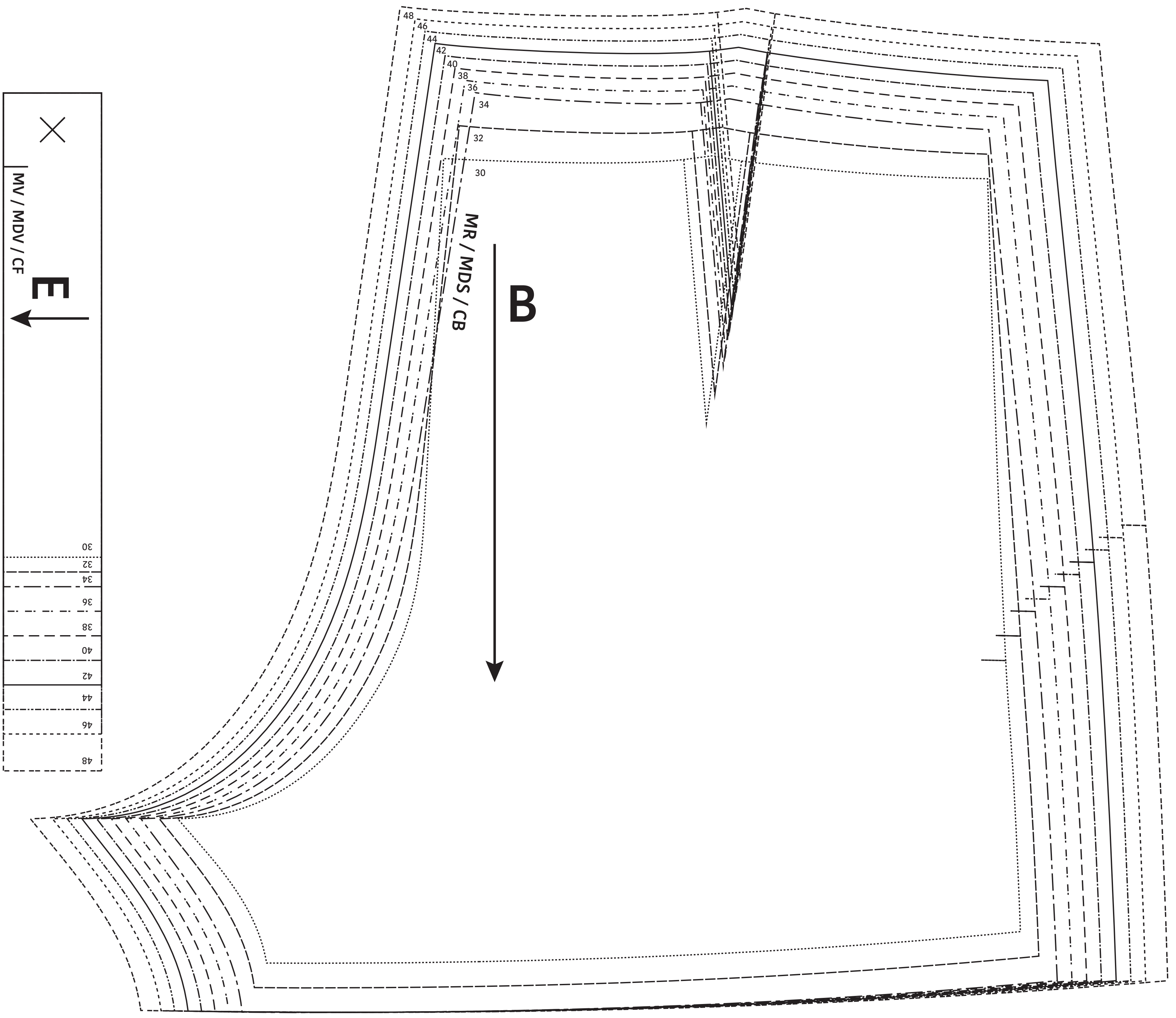
- Patroondelen / Pièces du patron / Pattern pieces:
- A voorpand / devant / front panel
 - B ruggand / dos / back panel
 - C zak VP / poche DV / pocket FP
 - D tailleband RVP / ceinture DVD / waistband RFP
 - E tailleband LVP / ceinture DVG / waistband LFP
 - F tailleband RP / ceinture DS / waistband BP
 - G gulfstuk / braguette / fly
 - H zakruffie / volant poche / pocket ruffle
 - I zoomboord / bord ourlet / shorts hem

LET OP! De patroondelen bevinden zich op verschillende raderbladen.

ATTENTION! Les pièces du patron sont réparties sur plusieurs planches.

IMPORTANT! The pattern pieces are located on different pattern sheets.





Alexandra
 Short / Shorts
 Zie RADERBLAD 1 / Voir PLANCHE 1 /
 See PATTERN SHEET 1