

# Jewel

Jurk Robe / Dress

Maten / Tailles / Sizes:

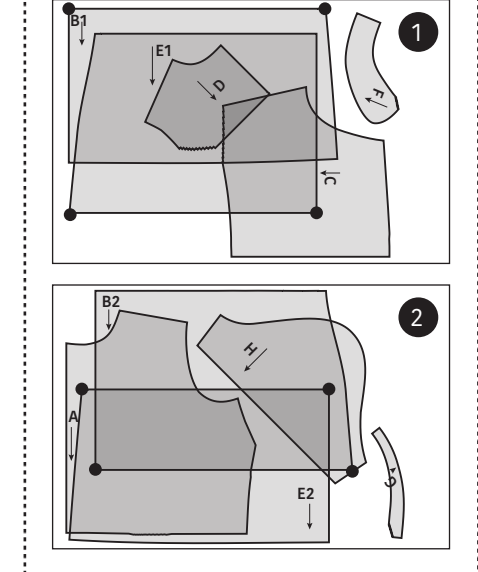
---	34
---	36
---	38
---	40
---	42
---	44
---	46
---	48
---	50
---	52
---	54
---	56

- Patroondelen / Pièces du patron / Pattern pieces:
- A voorpand bovenstuk / devant haut / front top piece
  - B voorpand rok / devant jupe / skirt front
  - C rugpand bovenstuk / dos haut / back top piece
  - D plat stuk / empiècement / yoke
  - E rok rugpand / jupe dos / skirt back
  - F kraag / col / collar
  - G kraagvoet / pied de col / collar base
  - H mouw / manche / sleeve

LET OP! De patroondelen bevinden zich op verschillende raderbladen.

ATTENTION! Les pièces du patron sont réparties sur plusieurs planches.

IMPORTANT! The pattern pieces are located on different pattern sheets.







**Jewel**  
 Jurk Robe / Dress  
 Zie RADERBLAD 1 / Voir PLANCHE 1 /  
 See PATTERN SHEET 1