

# Zindra

## Jurk / Robe / Dress

### Maten / Tailles / Sizes:

.....	92
-----	98
- - - - -	104
.....	110
- - - - -	116
-----	122 / 128
—————	134 / 140
.....	146 / 152
.....	158 / 164
- - - - -	170 / 176

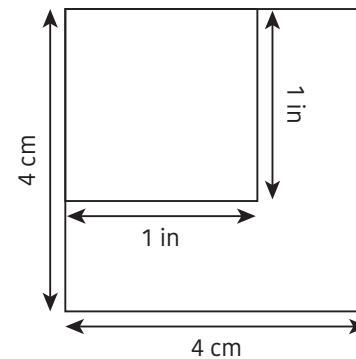
### Patroondelen / Pièces du patron / Pattern pieces:

- A** voorpand boven / haut DV / front top
- B** rugpand boven / haut DS / back top
- C** beleg VP / parementure DV /  
front facing
- D** beleg RP / parementure DS /  
back facing
- E** striklint / ruban à nouer / bow
- F** mouw / manche / sleeve
- G/H** voor-/rugpand onder / bas DV/DS /  
bottom of front/back

### Patroonschema / Schéma du Patron / Pattern Diagram / Übersichtsplan zum Zusammenkleben

1	2	3	4	5	6
7	8	9	10	11	12
13	14	15	16	17	18
19	20	21			

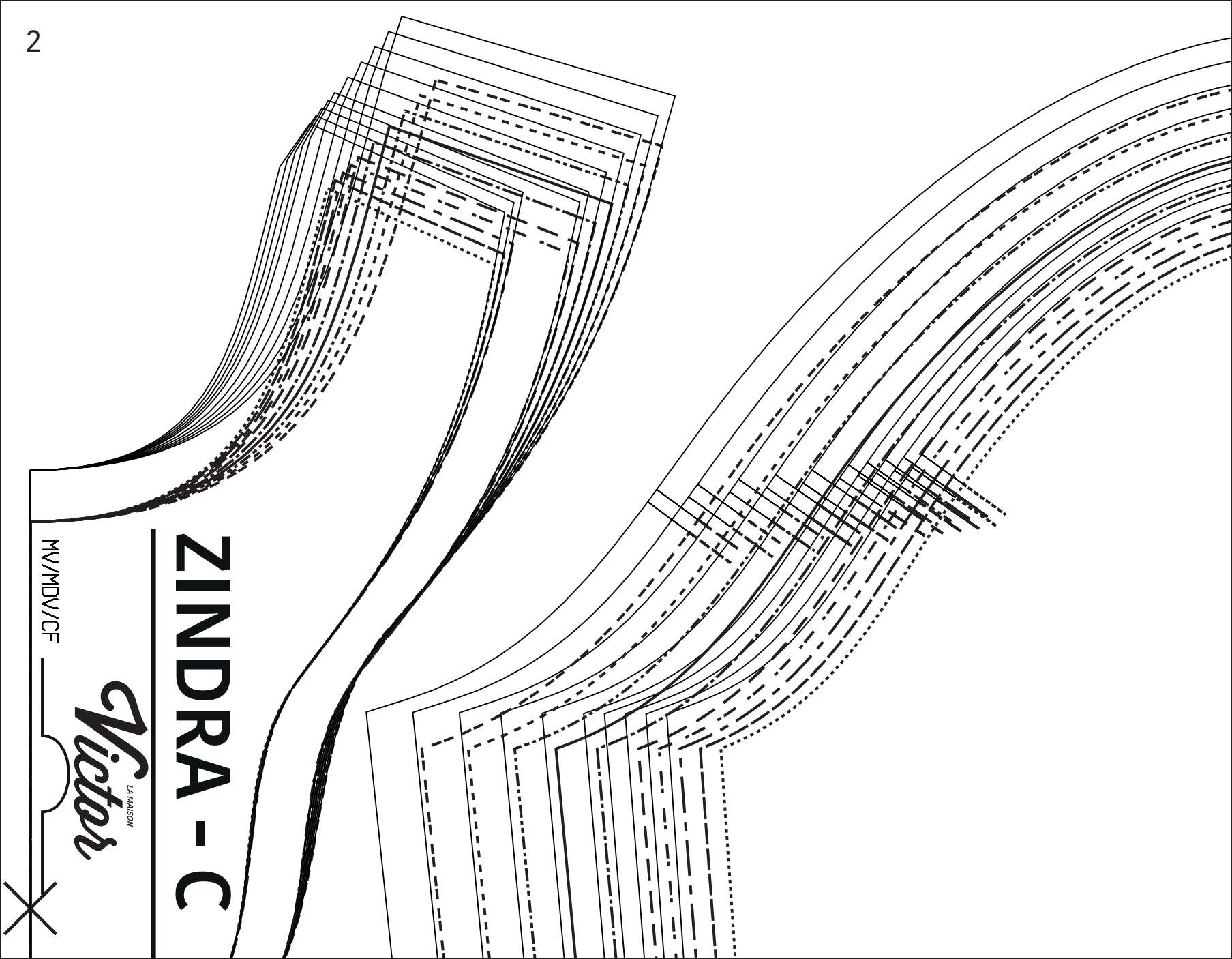
### Controlevierkant / Carré de controle / Test square / Kontrollquadrat

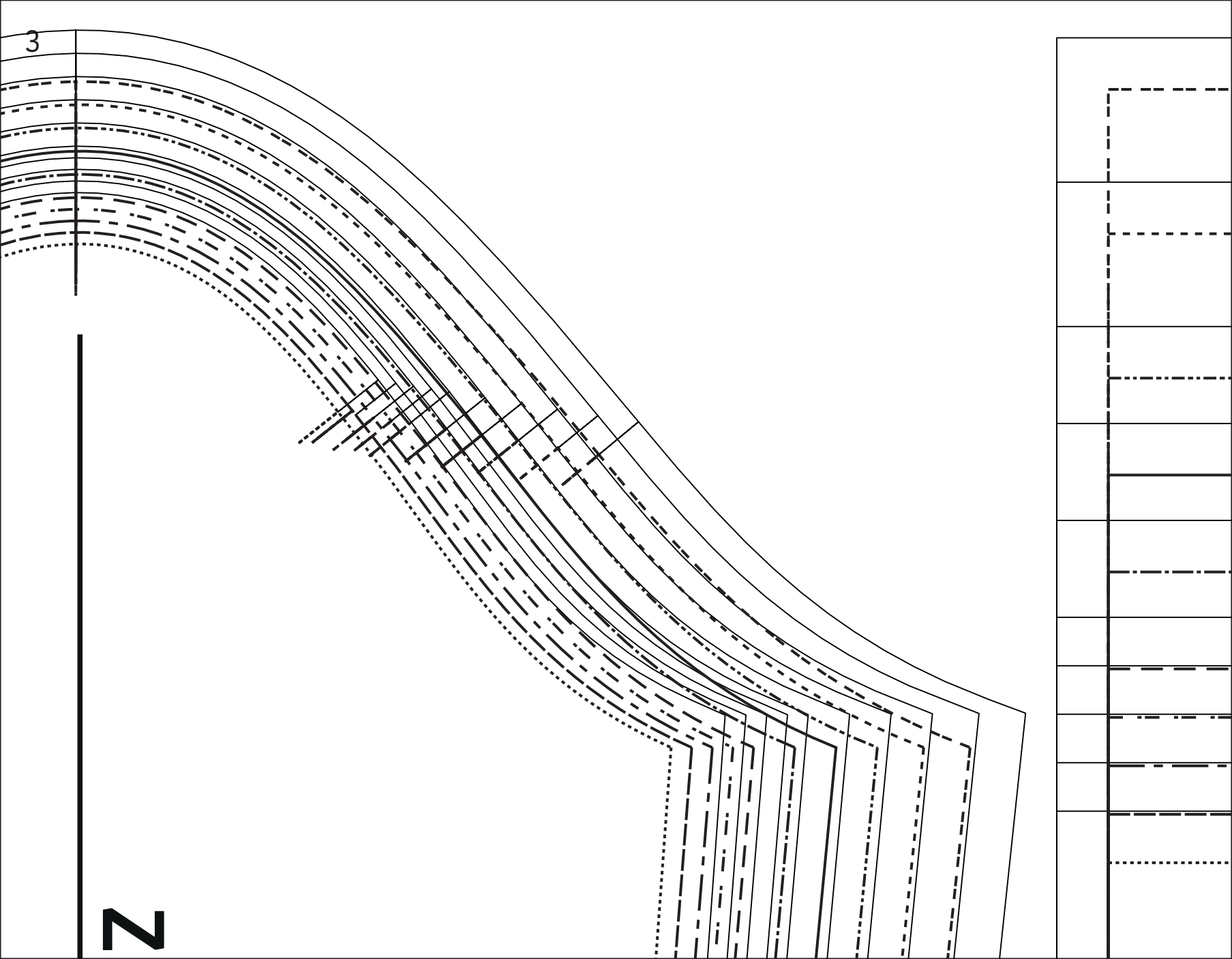


# ZINDRA - C

*Victor*  
LA MAISON

MV/MDV/CF

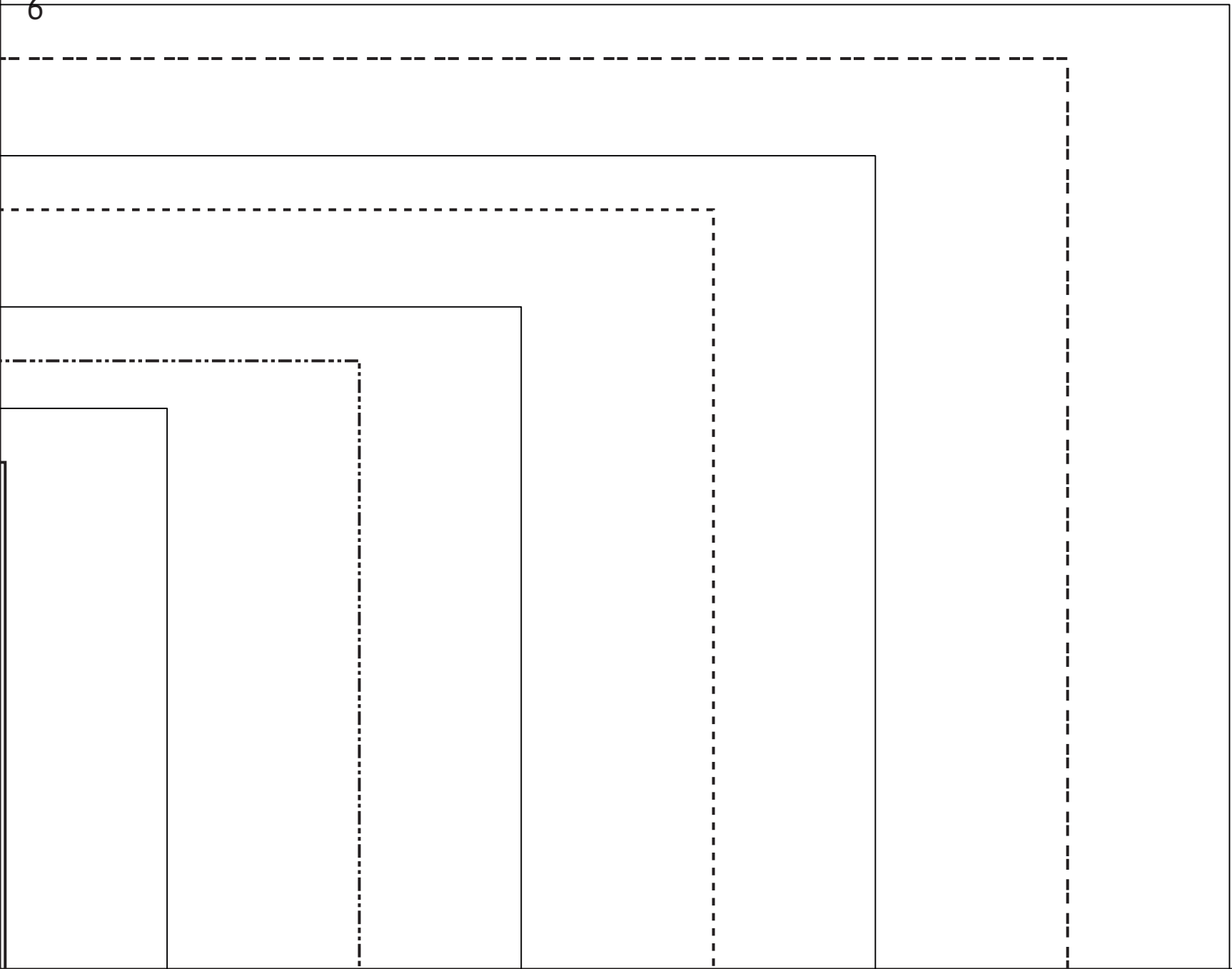


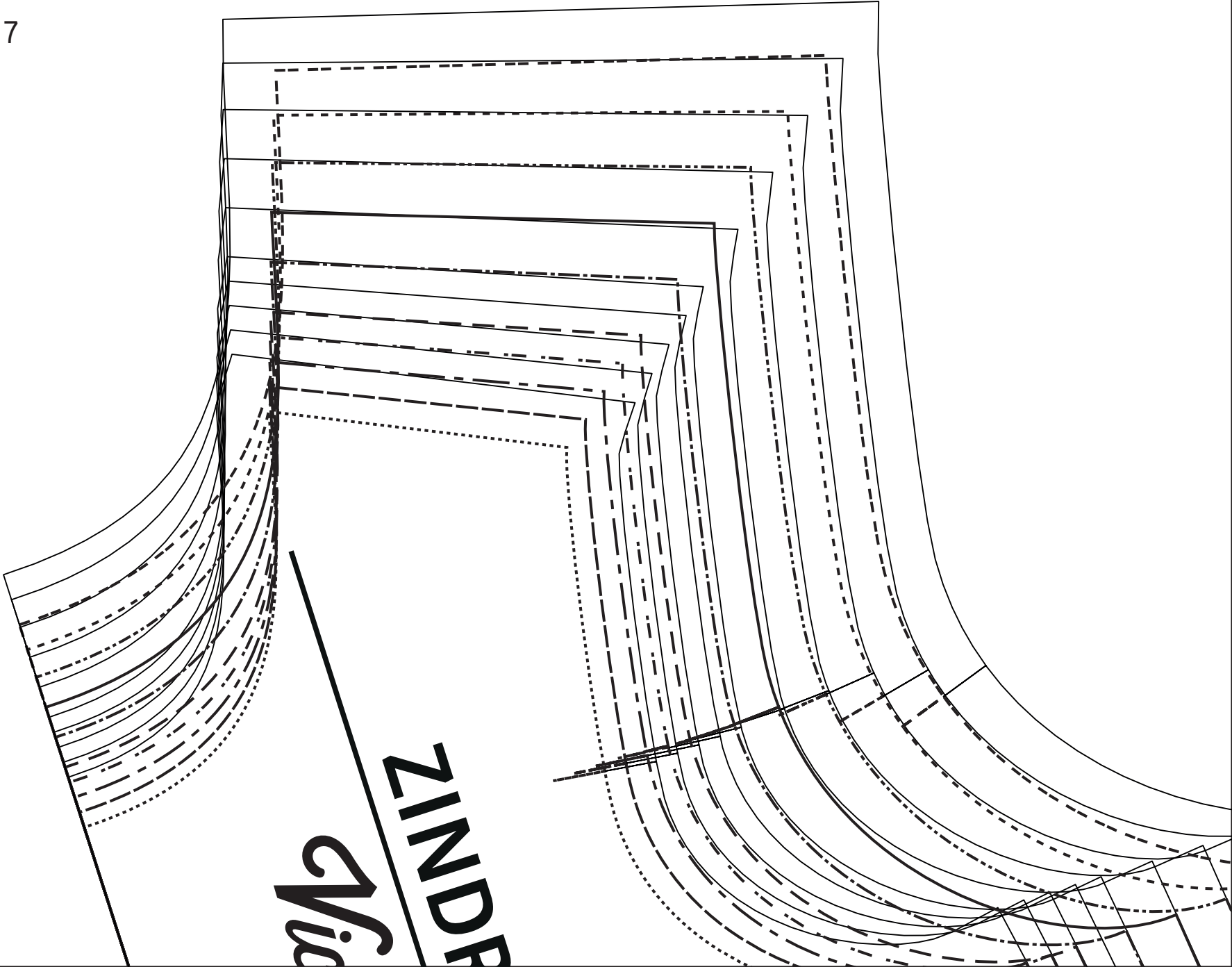


The page contains ten sets of horizontal lines for handwriting practice. Each set consists of a solid top line, a dashed middle line, and a solid bottom line. The lines are evenly spaced and extend across the width of the page. The first set is located near the top, and the last set is near the bottom. The dashed middle line is consistently positioned between the solid lines in each set.

Handwriting practice sheet with four sets of horizontal lines (solid top and bottom, dashed middle) and a series of nested rectangles at the bottom.

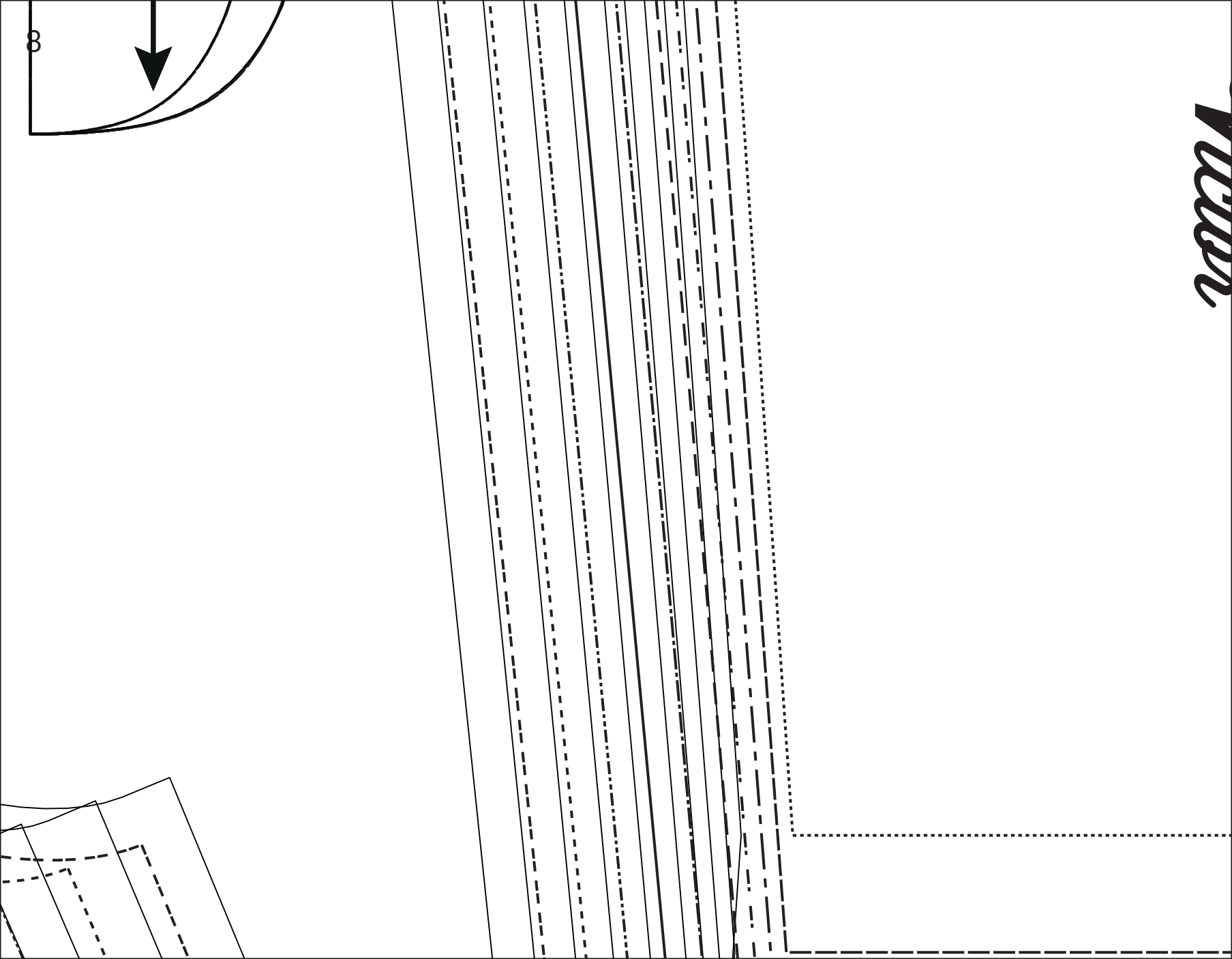
The page contains four sets of horizontal lines for handwriting practice. Each set consists of a solid top line, a dashed middle line, and a solid bottom line. At the bottom of the page, there are four nested rectangles. Each rectangle has a solid top and bottom line and a dashed left and right line. The rectangles are positioned such that their top edges align with the bottom lines of the handwriting sets above them.





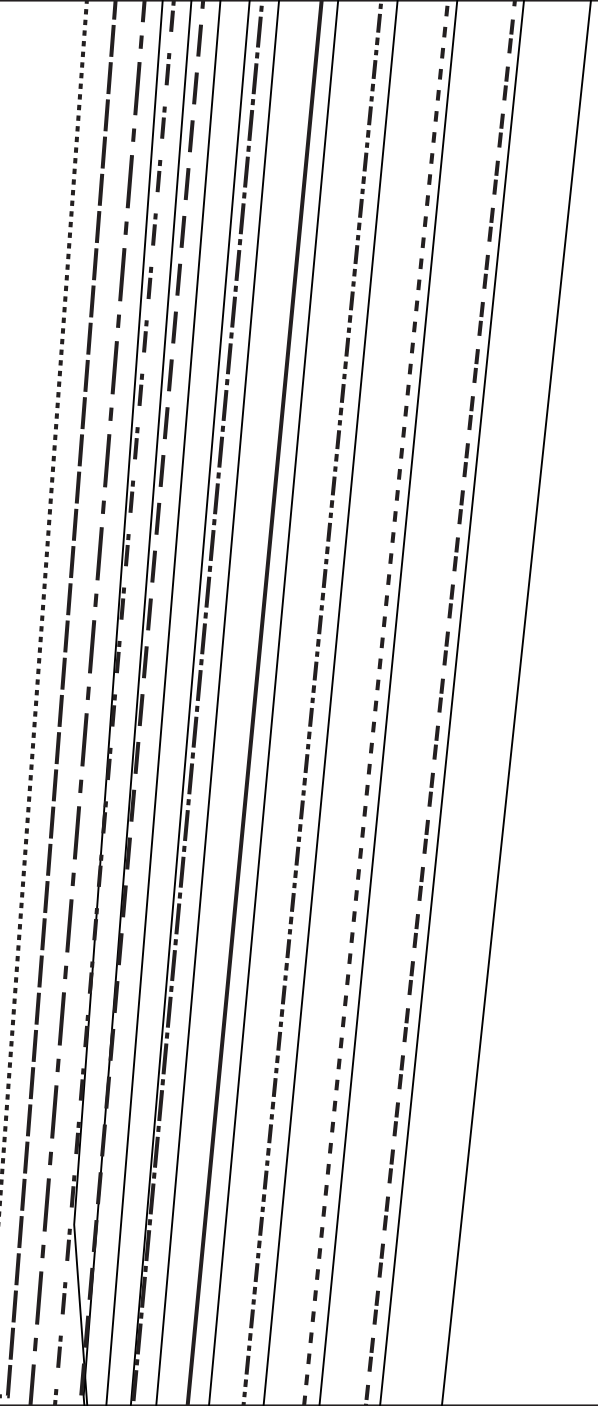
*Via*  
**ZINDR**

8



*Decorative wavy patterns*



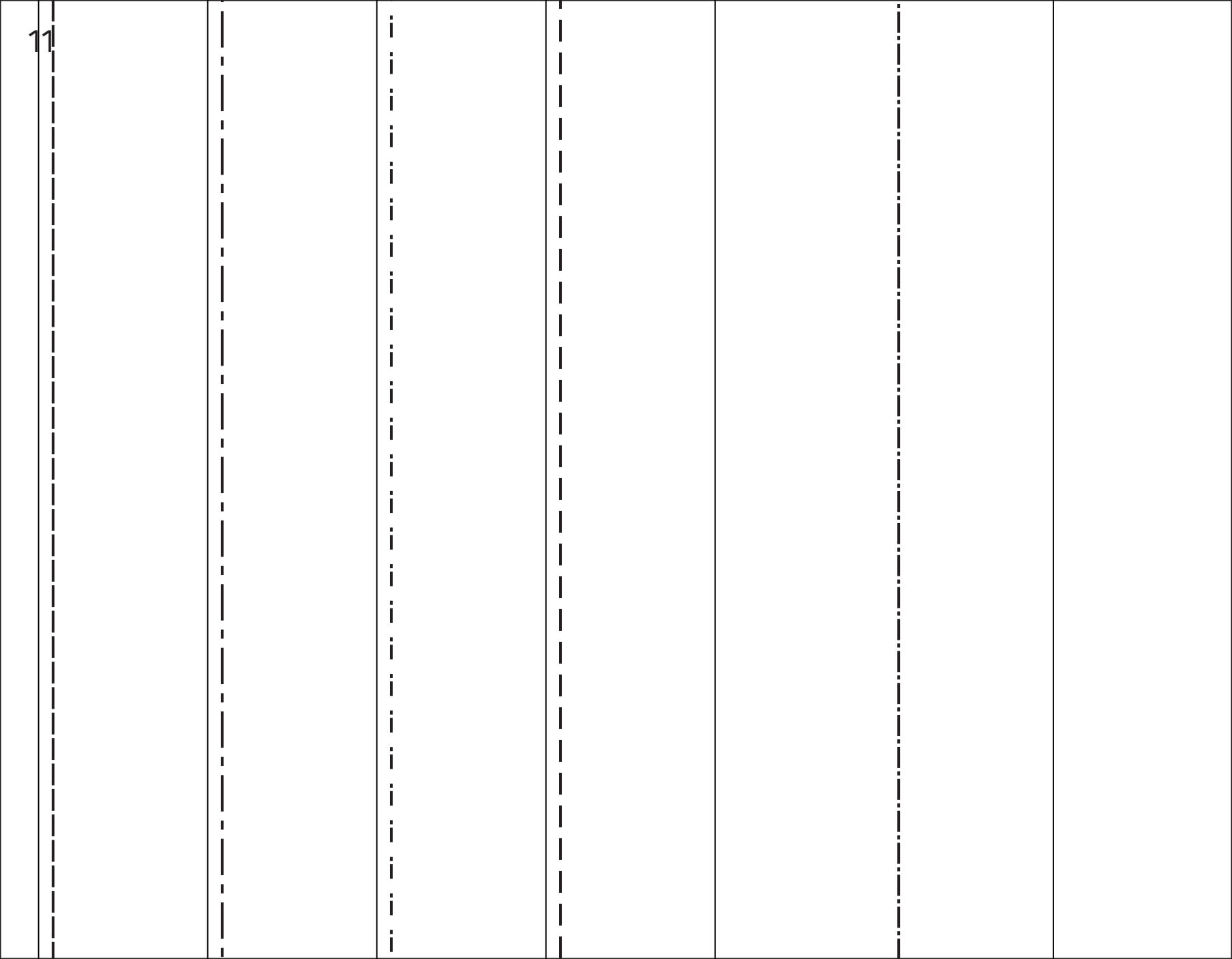


# INDRA - F



**ZINDRA - G=H**

LA MAISON  
*Victor*





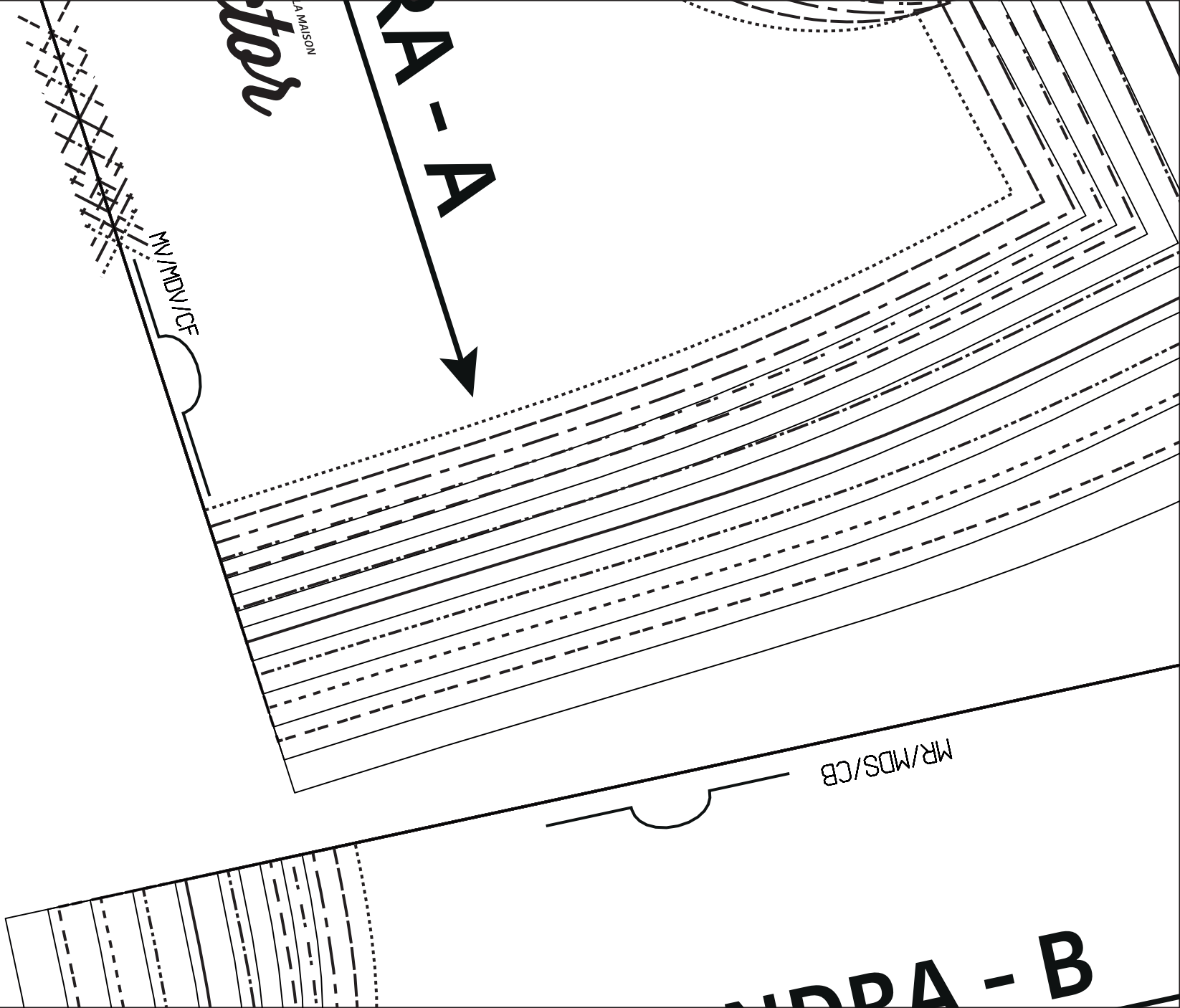
ston  
LA MAISON

RA - A

MR/MDS/CB

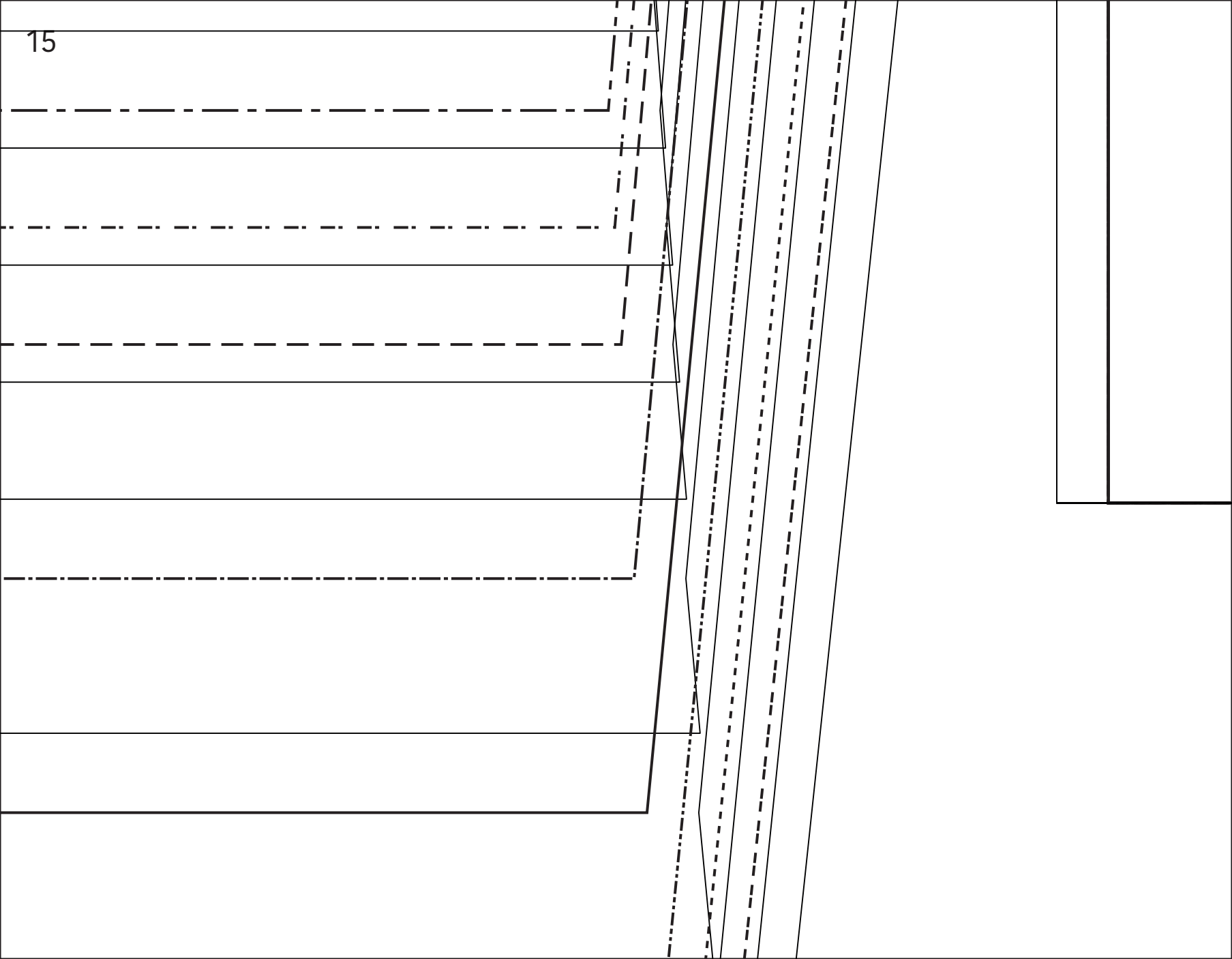
MR/MDS/CB

RA - B

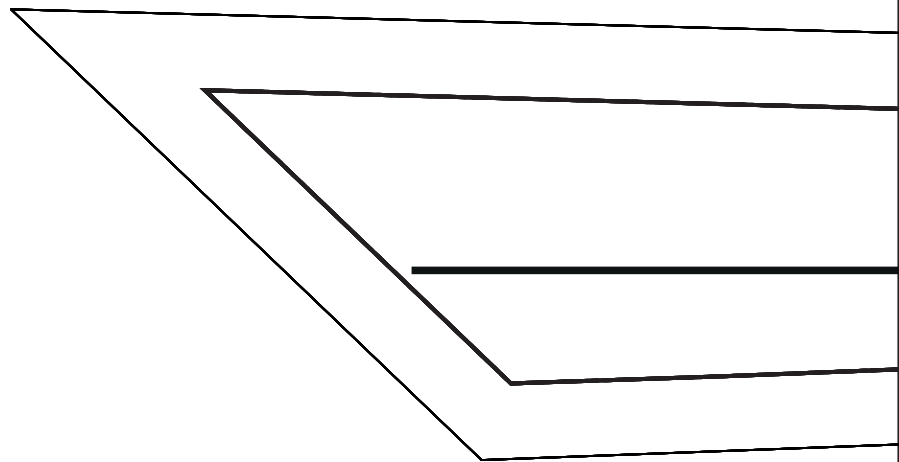




15



MV/MDV/CF  MR/MDS/CB

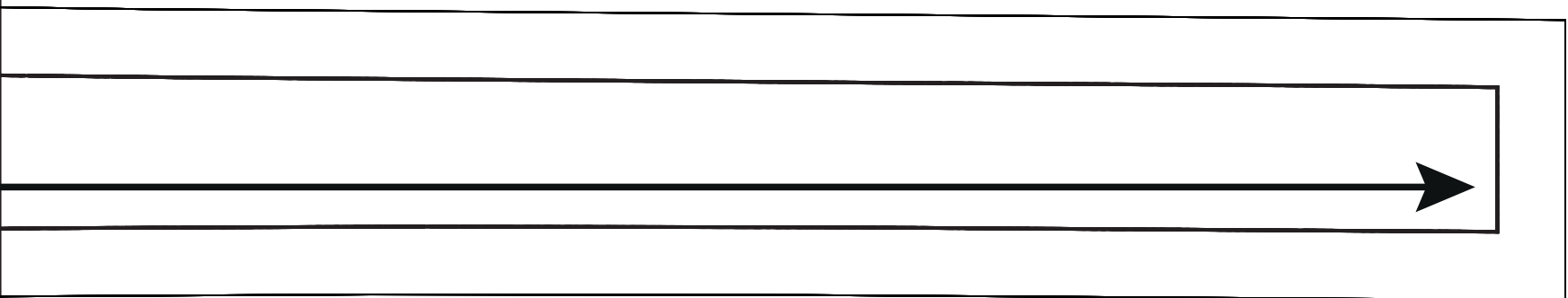




*Victor* LA MAISON

**ZINDRA - E**

18



ZINDRA

LA MAISON  
*Victor*

