

# Hara

Jas / Veste / Jacket

Maten / Tailles / Sizes:

.....	92
.....	98
.....	104
.....	110
.....	116
.....	122 / 128
.....	134 / 140
.....	146 / 152
.....	158 / 164
.....	170 / 176

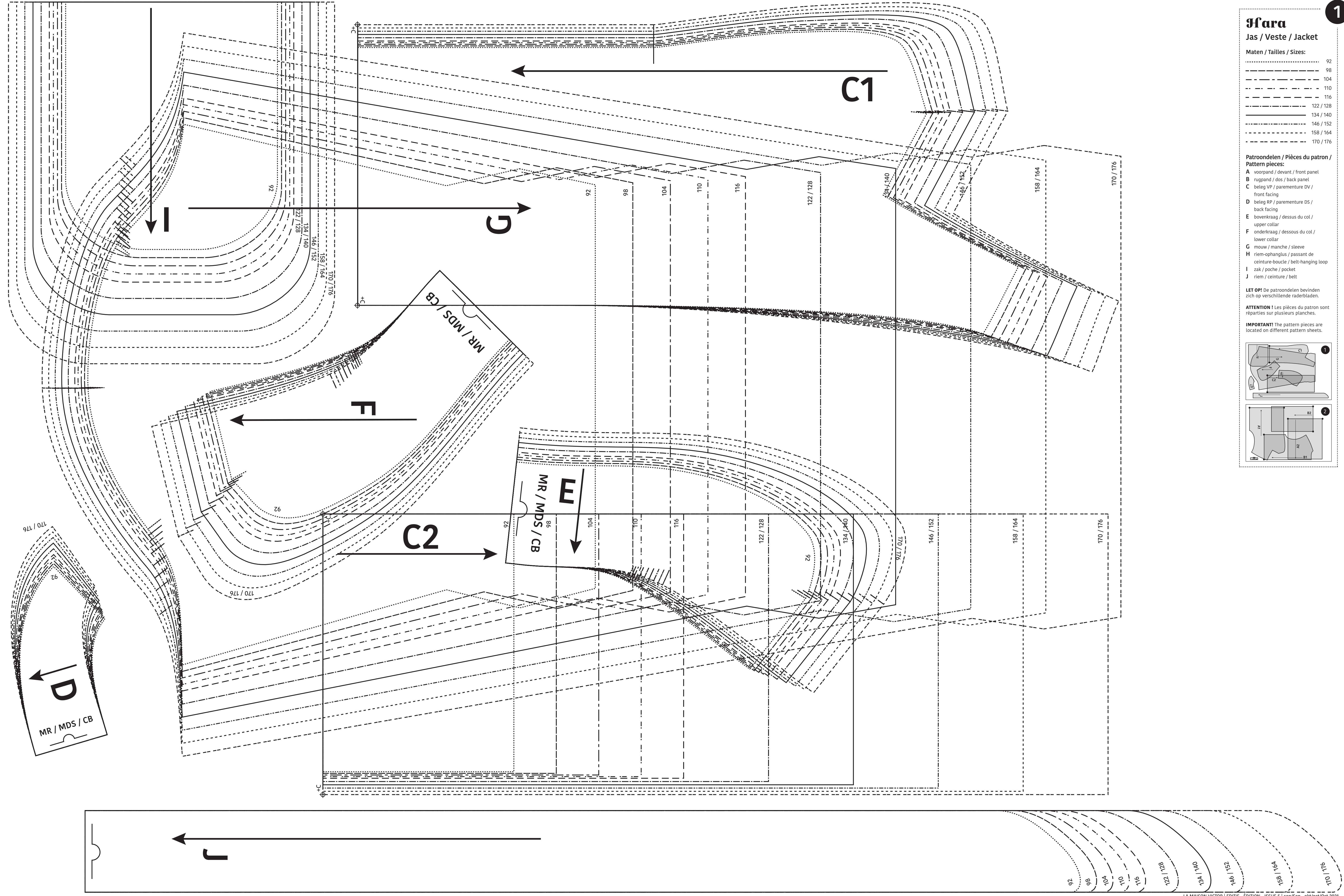
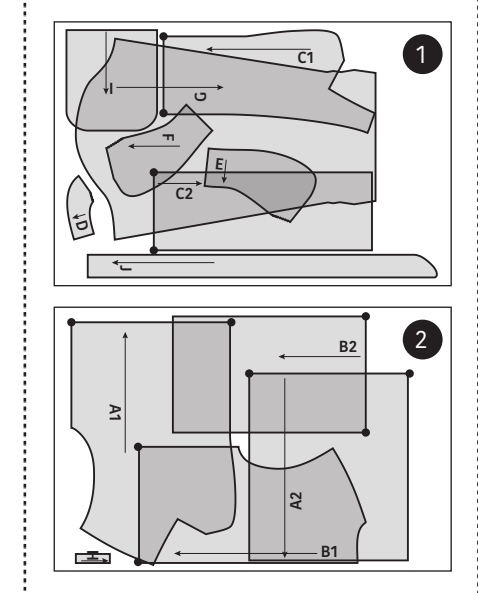
**Patroondelen / Pièces du patron / Pattern pieces:**

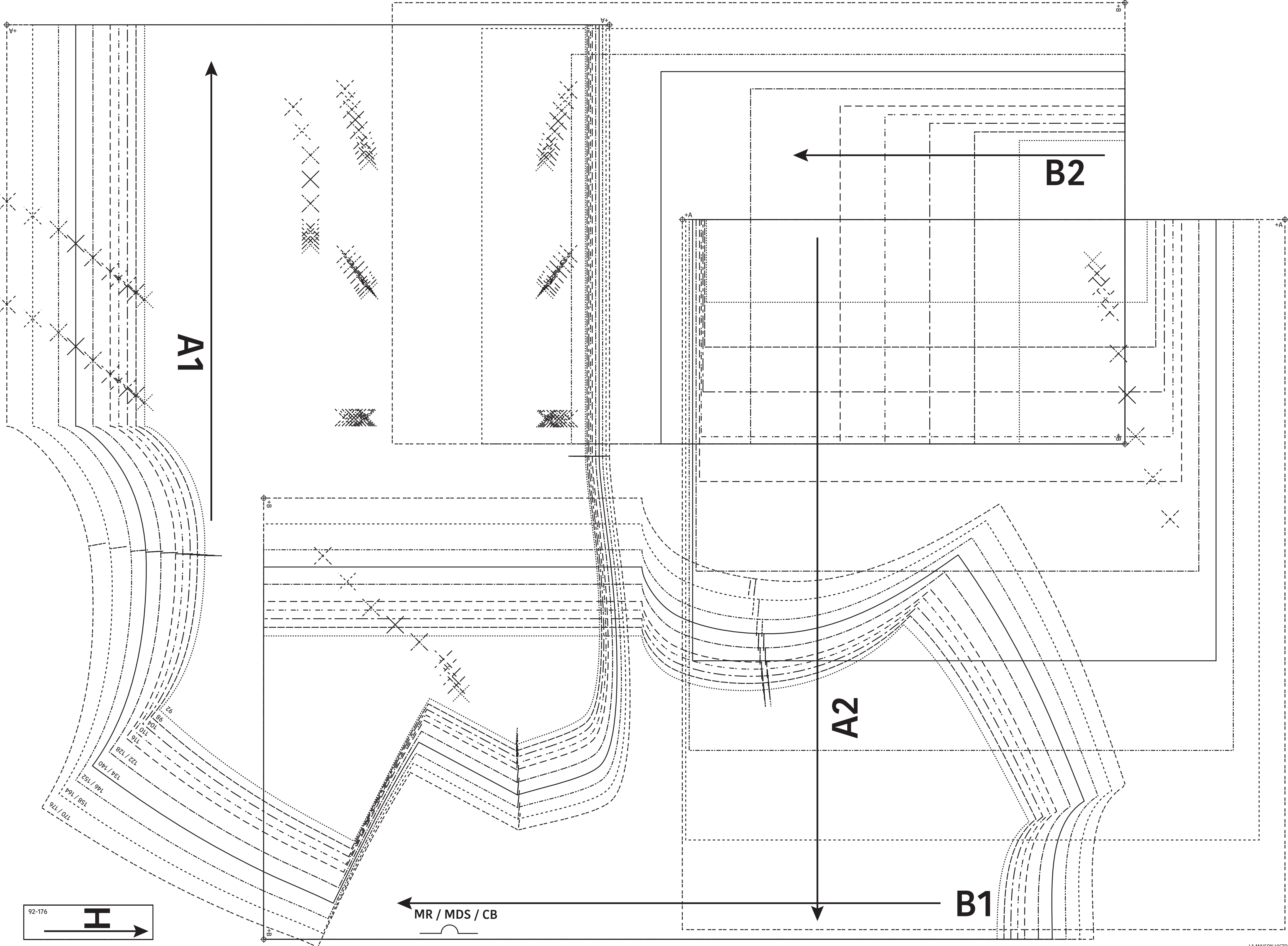
- A voorpand / devant / front panel
- B rugpand / dos / back panel
- C beleg VP / parementure DV / front facing
- D beleg RP / parementure DS / back facing
- E bovenkraag / dessus du col / upper collar
- F onderkraag / dessous du col / lower collar
- G mouw / manche / sleeve
- H riem-ophanglus / passant de ceinture-boucle / belt-hanging loop
- I zak / poche / pocket
- J riem / ceinture / belt

**LET OP!** De patroondelen bevinden zich op verschillende raderbladen.

**ATTENTION!** Les pièces du patron sont réparties sur plusieurs planches.

**IMPORTANT!** The pattern pieces are located on different pattern sheets.





**Hara**  
 Jas / Veste / Jacket  
 Zie RADERBLAD 1 / Voir PLANCHE 1 /  
 See PATTERN SHEET 1

92-176 **I** →

← MR / MDS / CB