

Jda

Trui / Pull / Jumper

Maten / Tailles / Sizes:

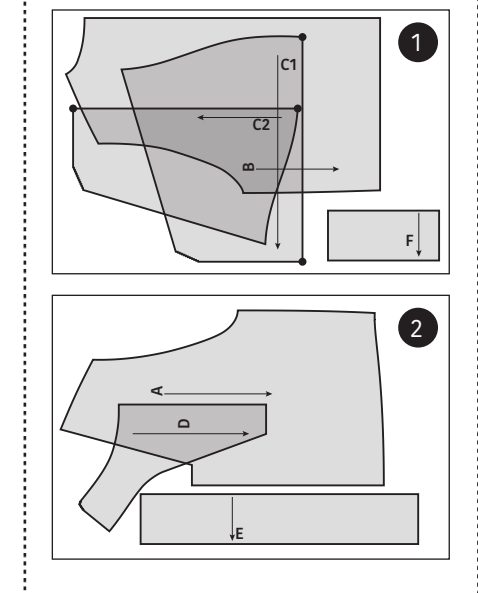
---	34
---	36
---	38
---	40
---	42
---	44
---	46
---	48
---	50
---	52
---	54
---	56

- Patroondelen / Pièces du patron / Pattern pieces:
- A voorpand / devant / front panel
 - B rugpand / dos / back panel
 - C mouw / manche / sleeve
 - D kraag / col / collar
 - E zoomboord / bord ourlet / hem trim
 - F polsboord / bord manchette / cuff

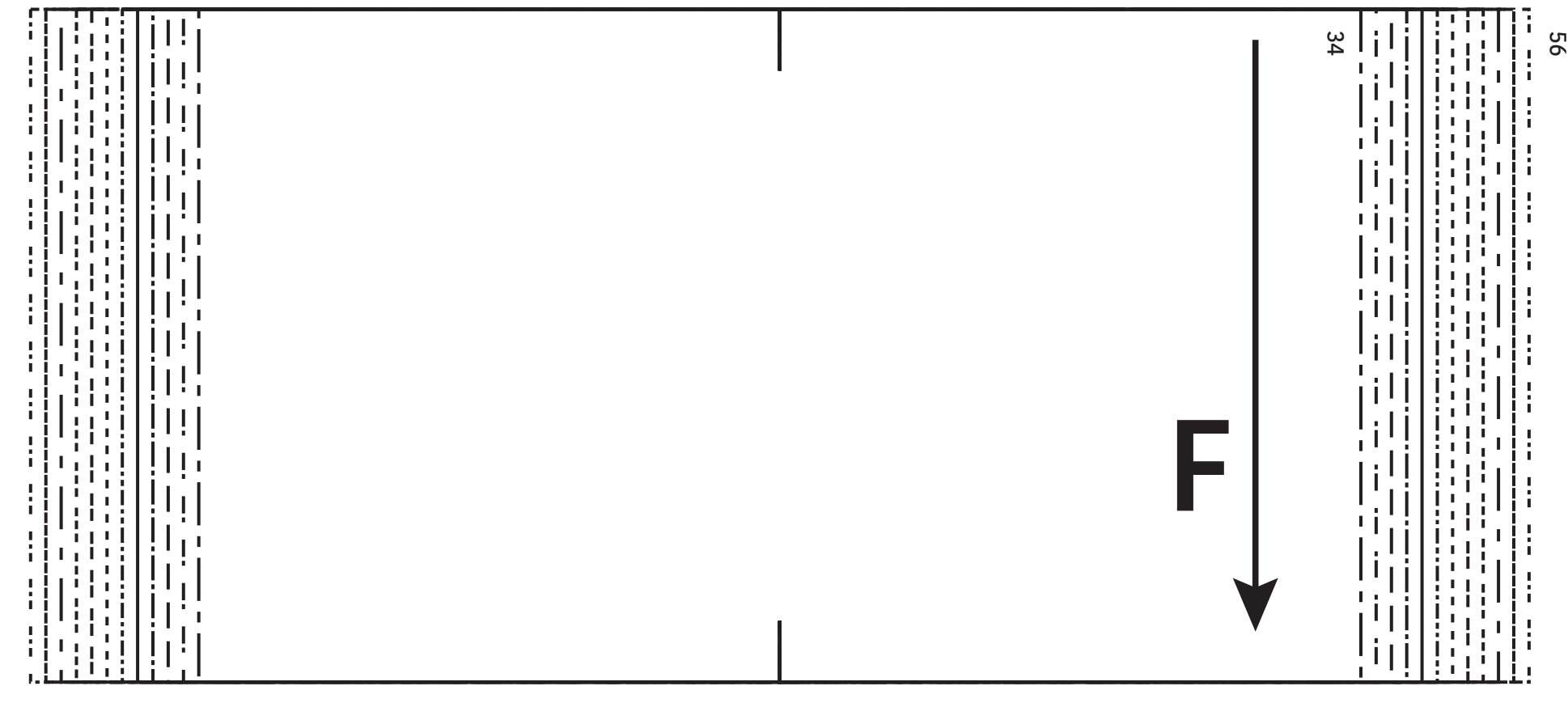
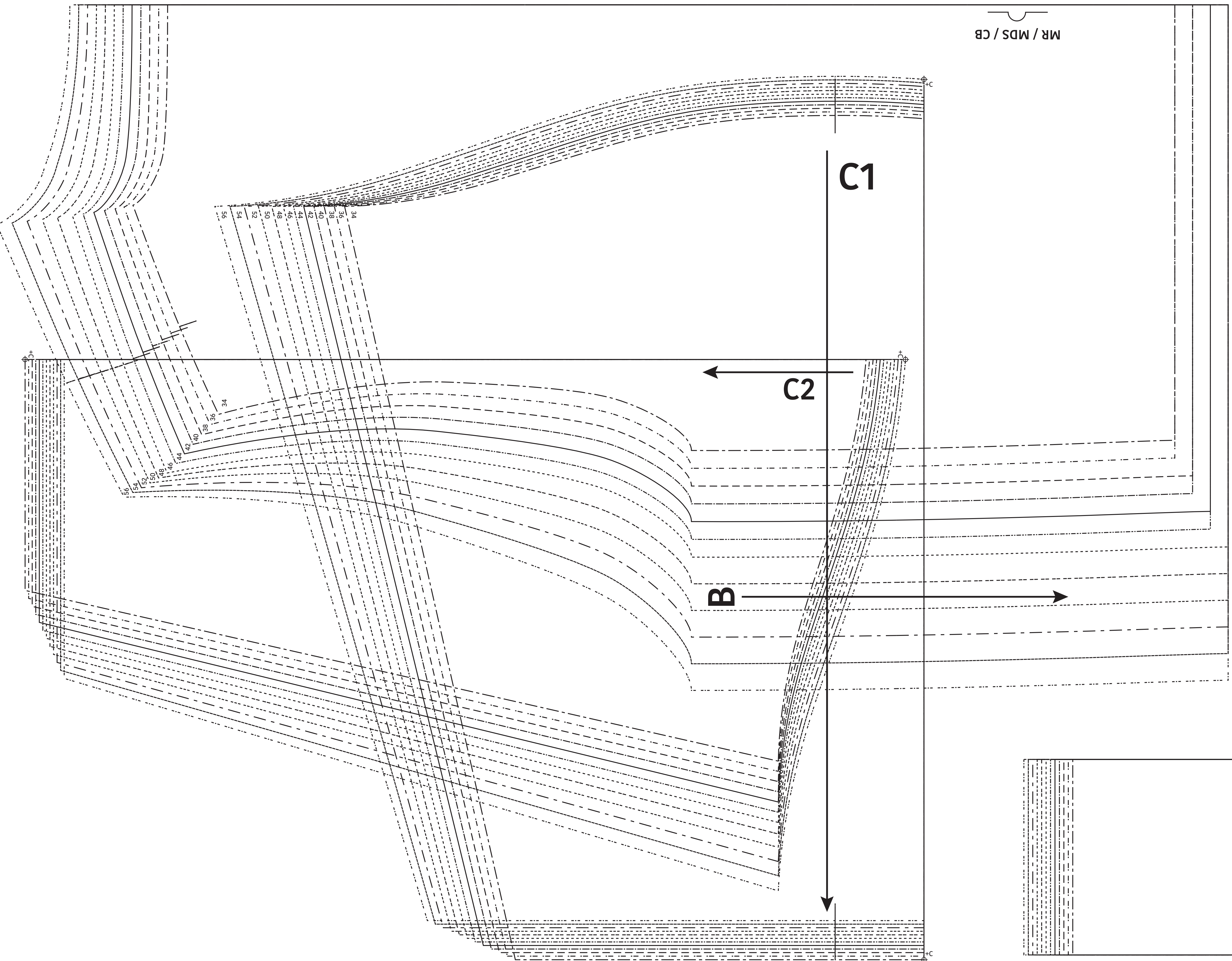
LET OP! De patroondelen bevinden zich op verschillende raderbladen.

ATTENTION! Les pièces du patron sont réparties sur plusieurs planches.

IMPORTANT! The pattern pieces are located on different pattern sheets.



MR / MDS / CB



Jda
Trui / Pull / Jumper
Zie RADERBLAD 1 / Voir PLANCHE 1 /
See PATTERN SHEET 1

