

Elise

Blouse

Maten / Tailles / Sizes:

---	34
---	36
---	38
---	40
---	42
---	44
---	46
---	48
---	50
---	52
---	54
---	56

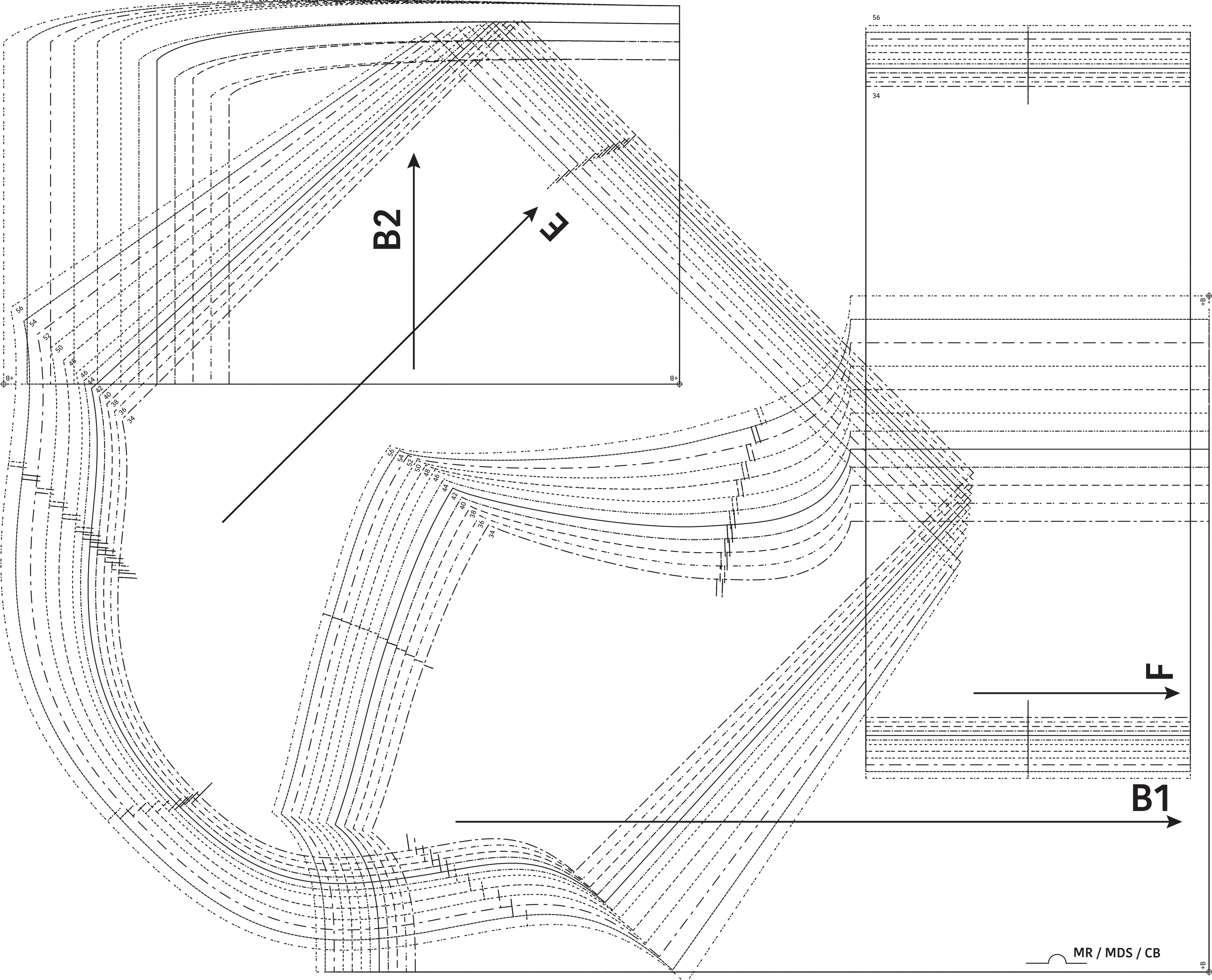
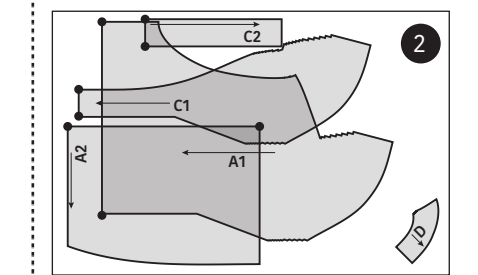
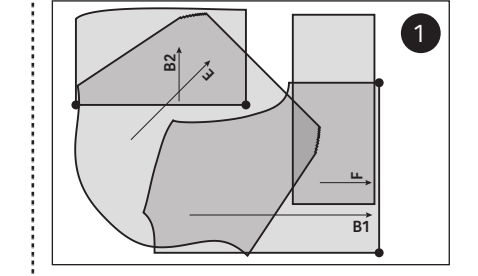
Patroondelen / Pièces du patron / Pattern pieces:

- A voorpand / devant / front panel
- B rugpand / dos / back panel
- C beleg VP / parementure DV / facing FP
- D beleg RP / parementure DS / facing BP
- E mouw / manche / sleeve
- F polsboord / bord manchette / cuff

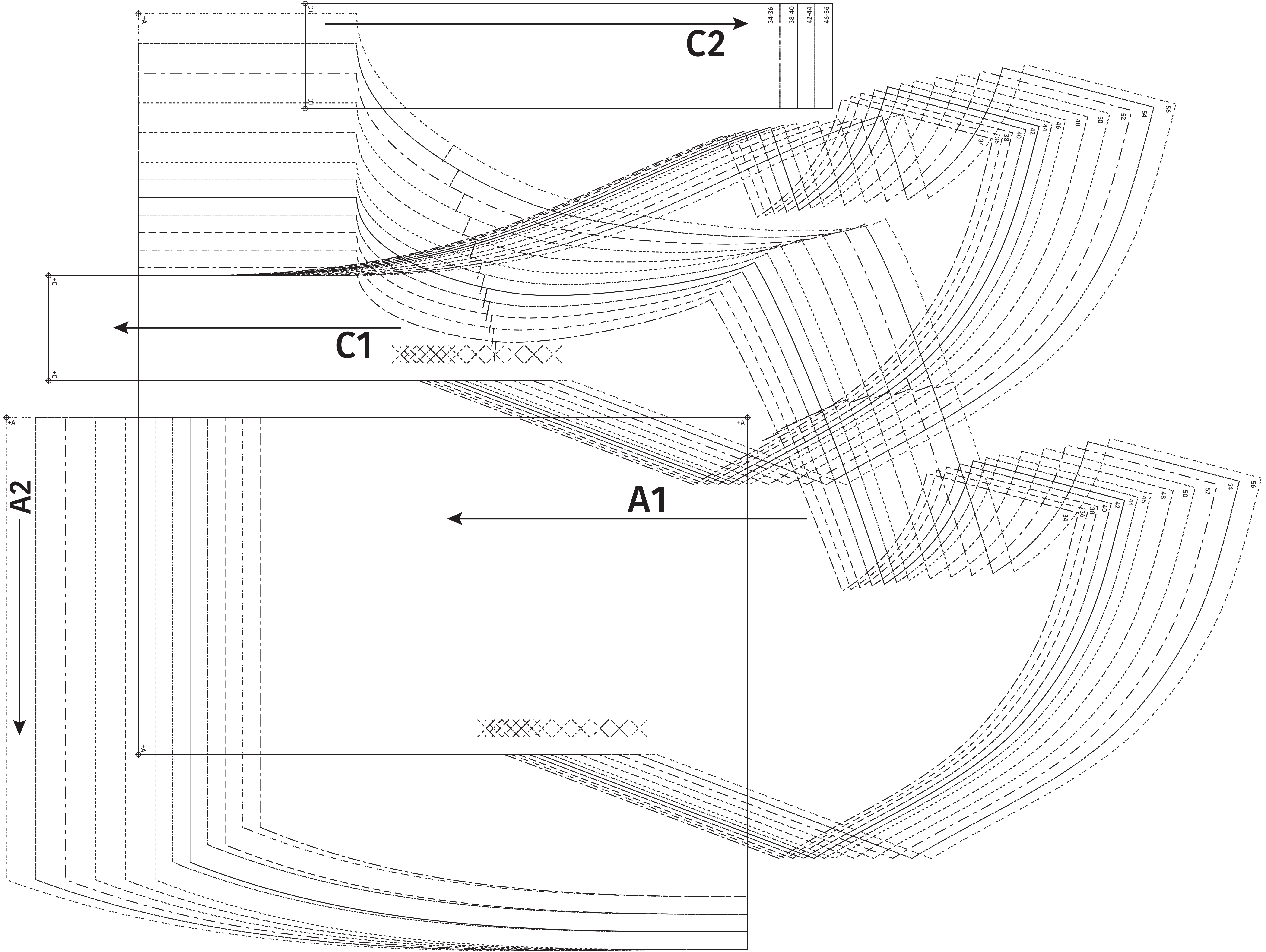
LET OP! De patroondelen bevinden zich op verschillende raderbladen.

ATTENTION! Les pièces du patron sont réparties sur plusieurs planches.

IMPORTANT! The pattern pieces are located on different pattern sheets.



34-36
38-40
42-44
46-56



Elise
 Blouse
 Zie RADERBLAD 1 / Voir PLANCHE 1 /
 See PATTERN SHEET 1

