

# Melle

Blouse / Top

Maten / Tailles / Sizes:

---	34
---	36
---	38
---	40
---	42
---	44
---	46
---	48
---	50
---	52
---	54
---	56

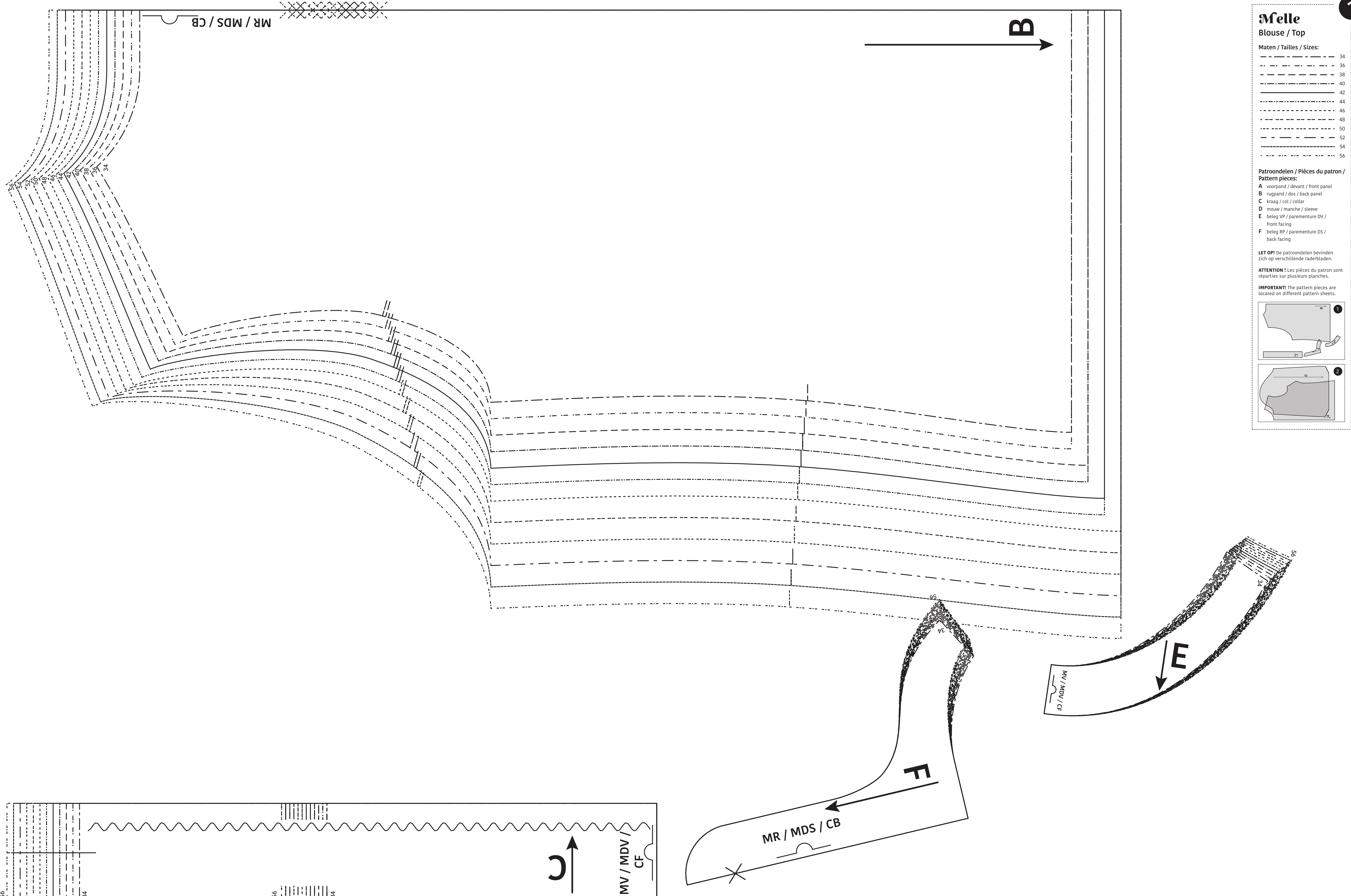
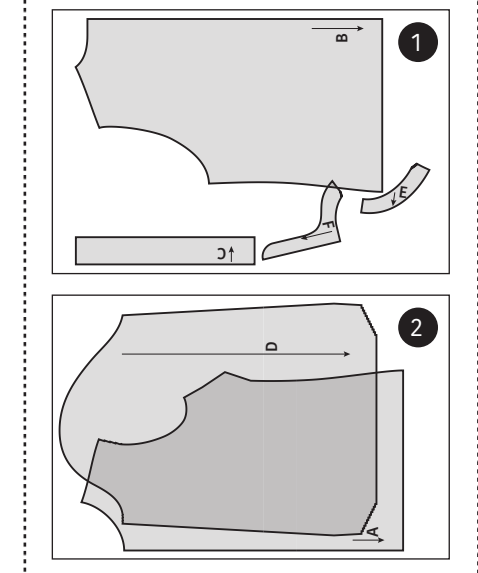
**Patroondelen / Pièces du patron / Pattern pieces:**

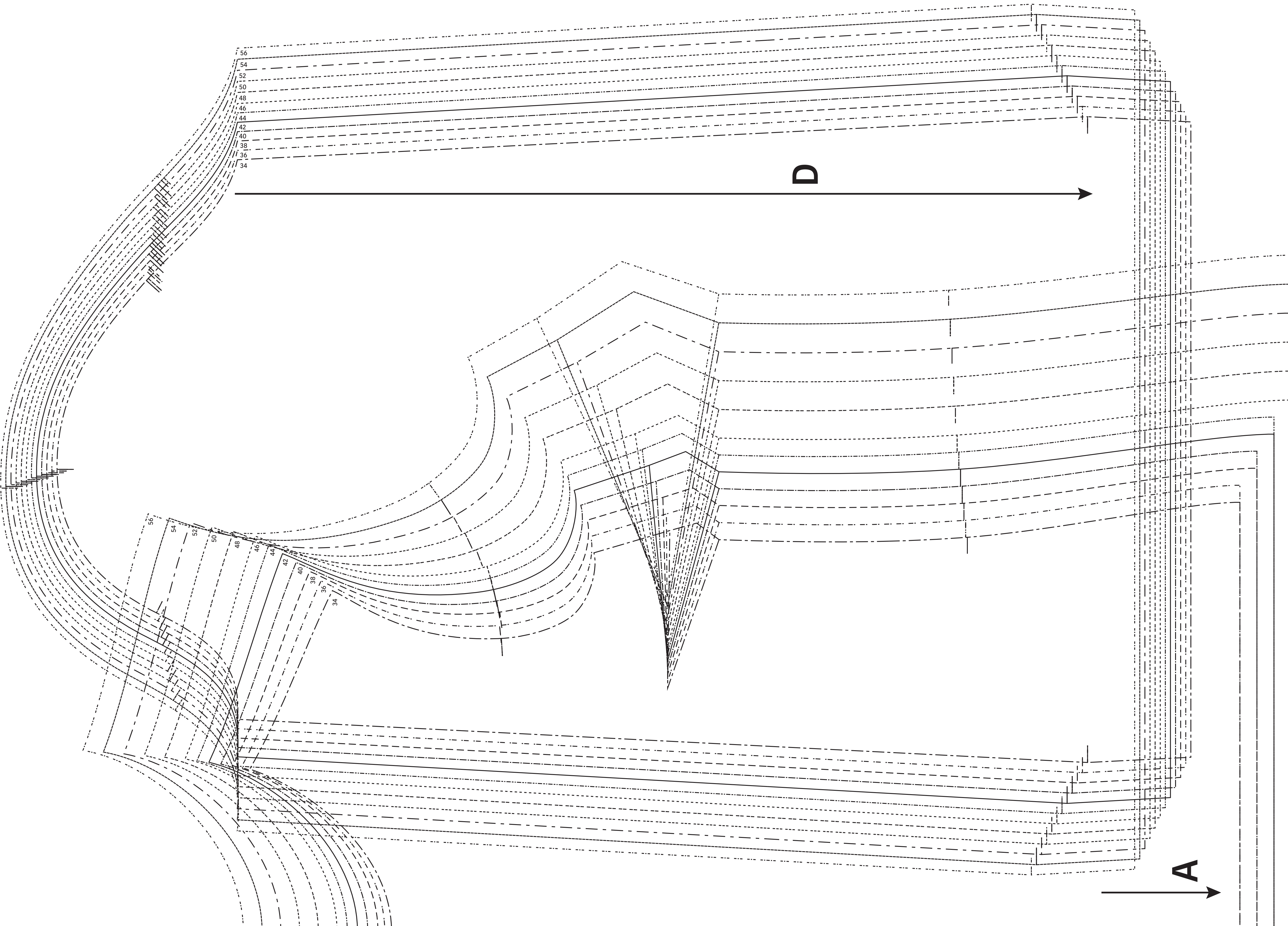
- A voorpand / devant / front panel
- B ruggand / dos / back panel
- C kraag / col / collar
- D mouw / manche / sleeve
- E beleg VP / parementure DV / front facing
- F beleg RP / parementure DS / back facing

**LET OP!** De patroondelen bevinden zich op verschillende raderbladen.

**ATTENTION!** Les pièces du patron sont réparties sur plusieurs planches.

**IMPORTANT!** The pattern pieces are located on different pattern sheets.





**Melle**  
Blouse / Top  
Zie RADERBLAD 1 / Voir PLANCHE 1 /  
See PATTERN SHEET 1