

# Emery Blouse

Maten / Tailles / Sizes:

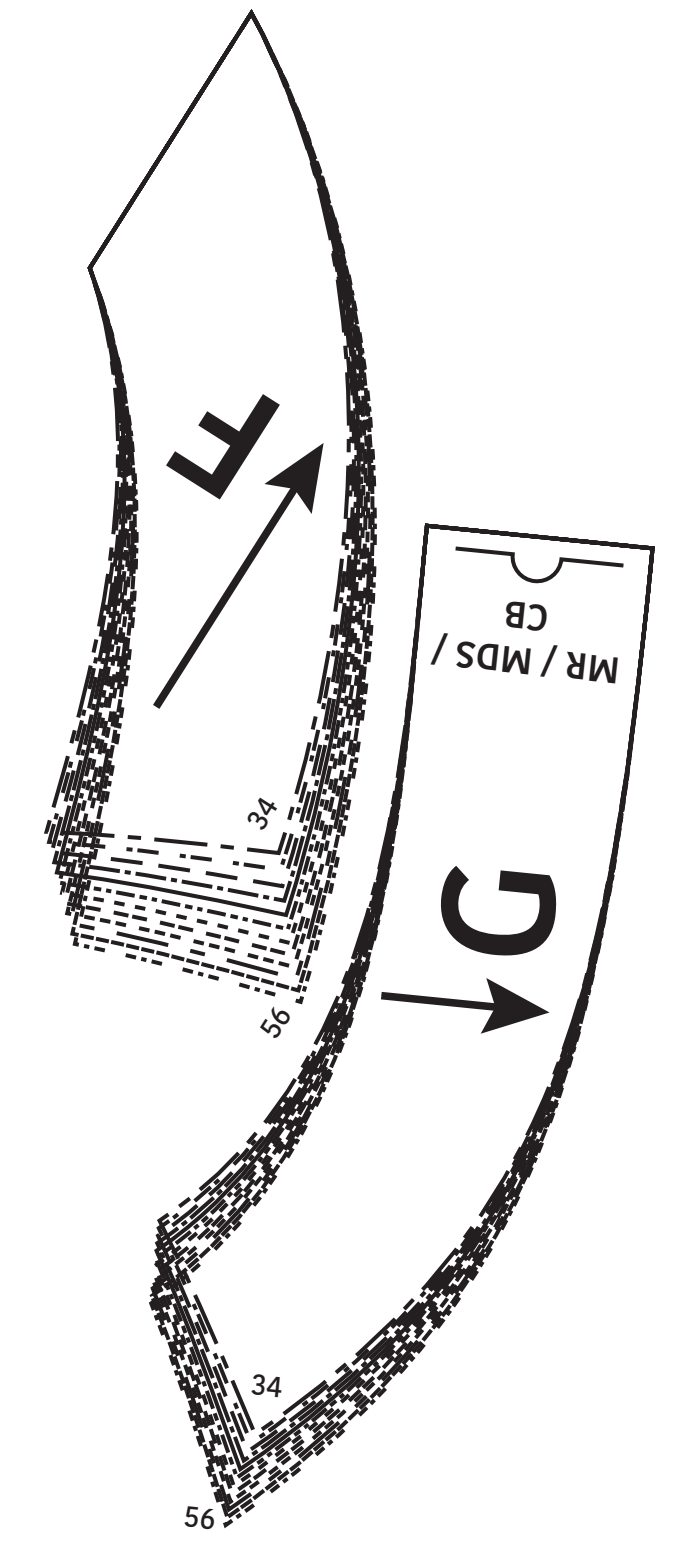
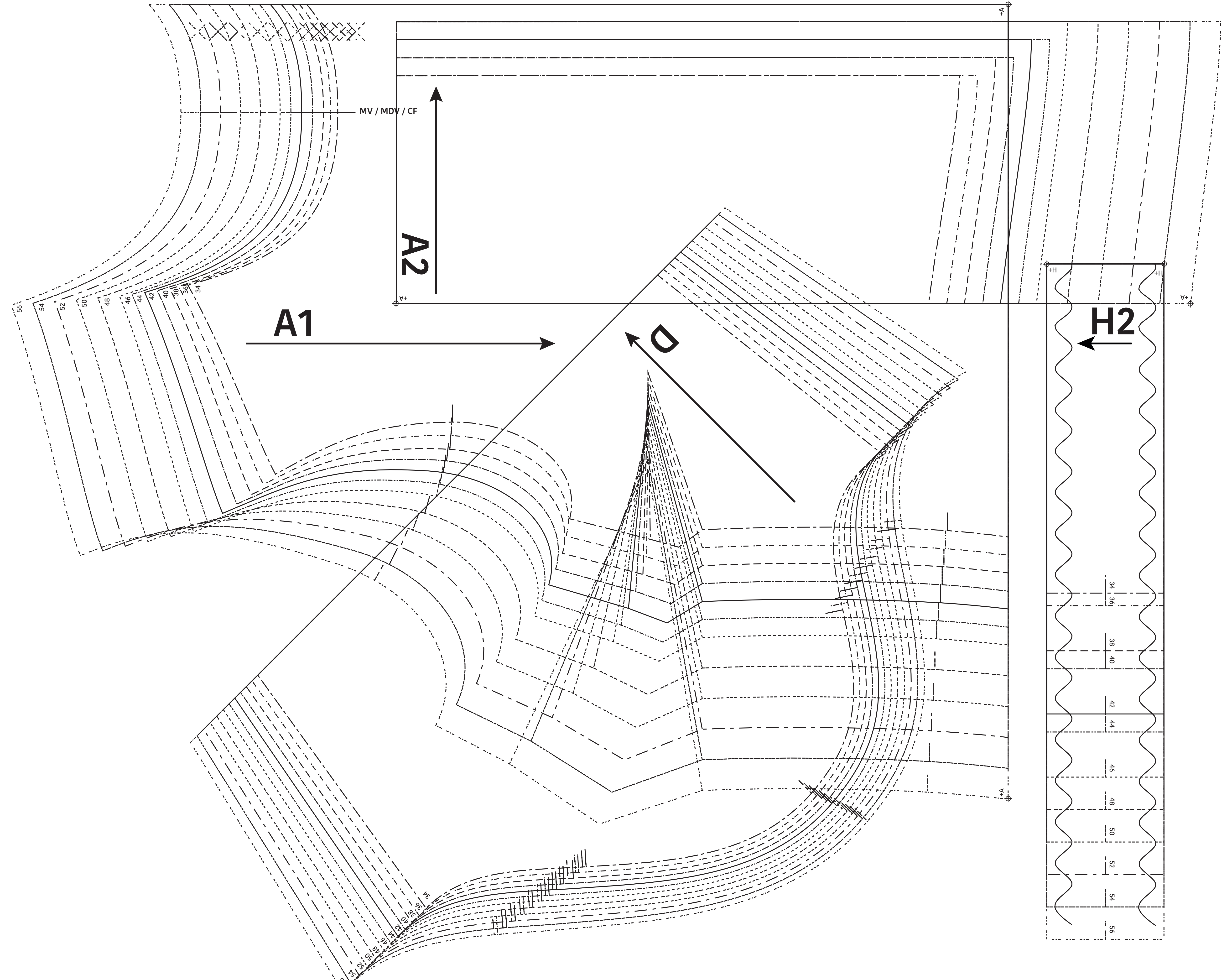
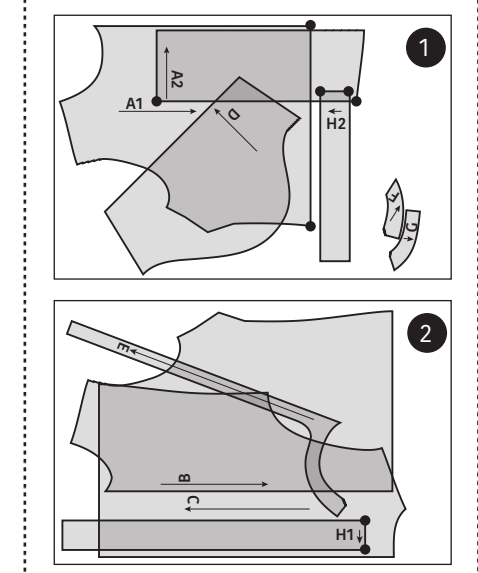
---	34
---	36
---	38
---	40
---	42
---	44
---	46
---	48
---	50
---	52
---	54
---	56

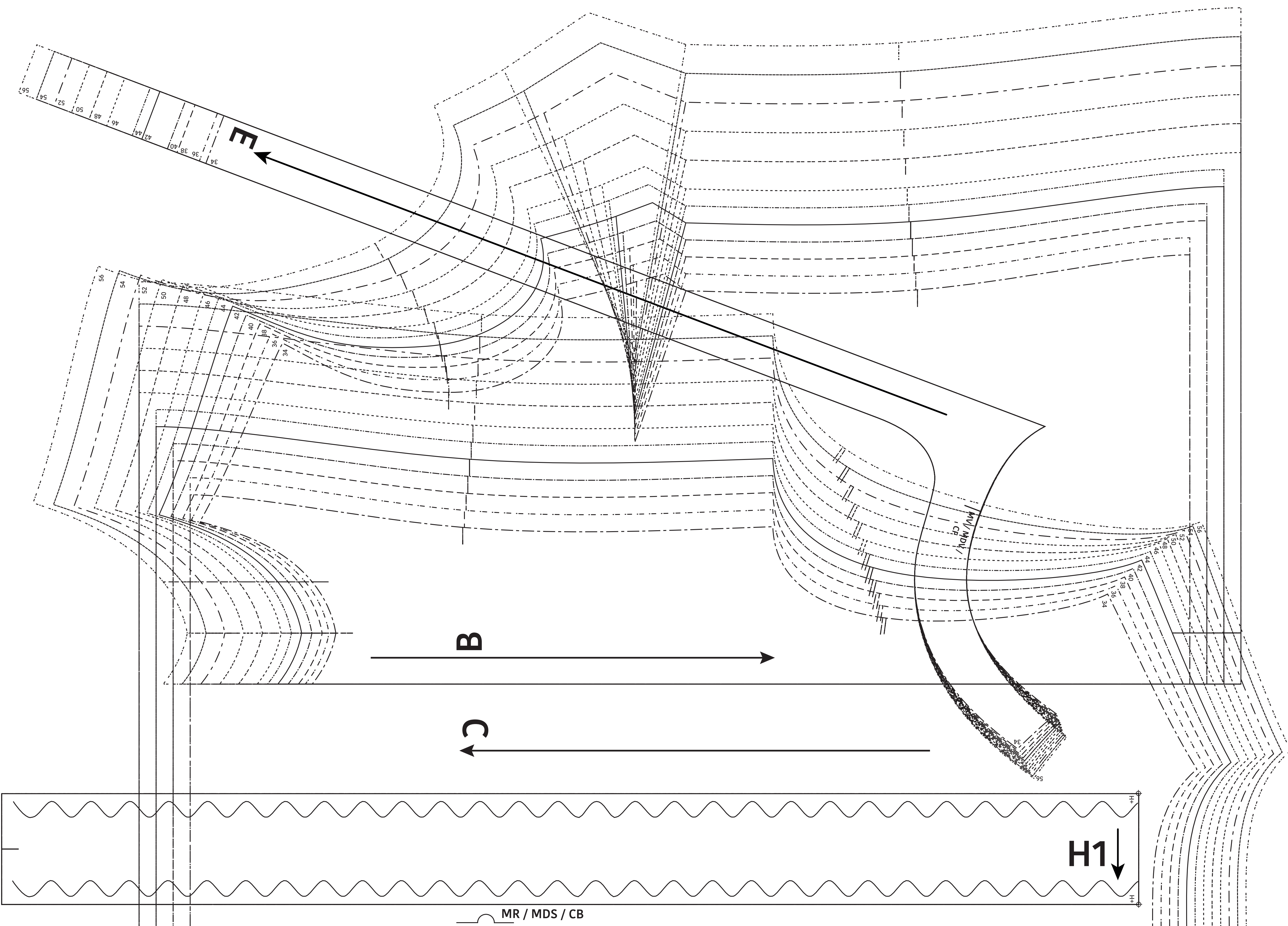
- Patroondelen / Pièces du patron / Pattern pieces:
- A** voorpand rechts / devant droit / right front panel
  - B** voorpand links / devant gauche / left front panel
  - C** rugpand / dos / back panel
  - D** mouw / manche / sleeve
  - E** beleg RVP / parementure DVD / facing RFP
  - F** beleg LVP / parementure DVG / facing LFP
  - G** beleg RP / parementure DS / facing BP
  - H** ruffleboord / liseré à volant / ruffle

**LET OP!** De patroondelen bevinden zich op verschillende raderbladen.

**ATTENTION!** Les pièces du patron sont réparties sur plusieurs planches.

**IMPORTANT!** The pattern pieces are located on different pattern sheets.





**Emery**  
 Blouse  
 Zie RADERBLAD 1 / Voir PLANCHE 1 /  
 See PATTERN SHEET 1