

Jubette

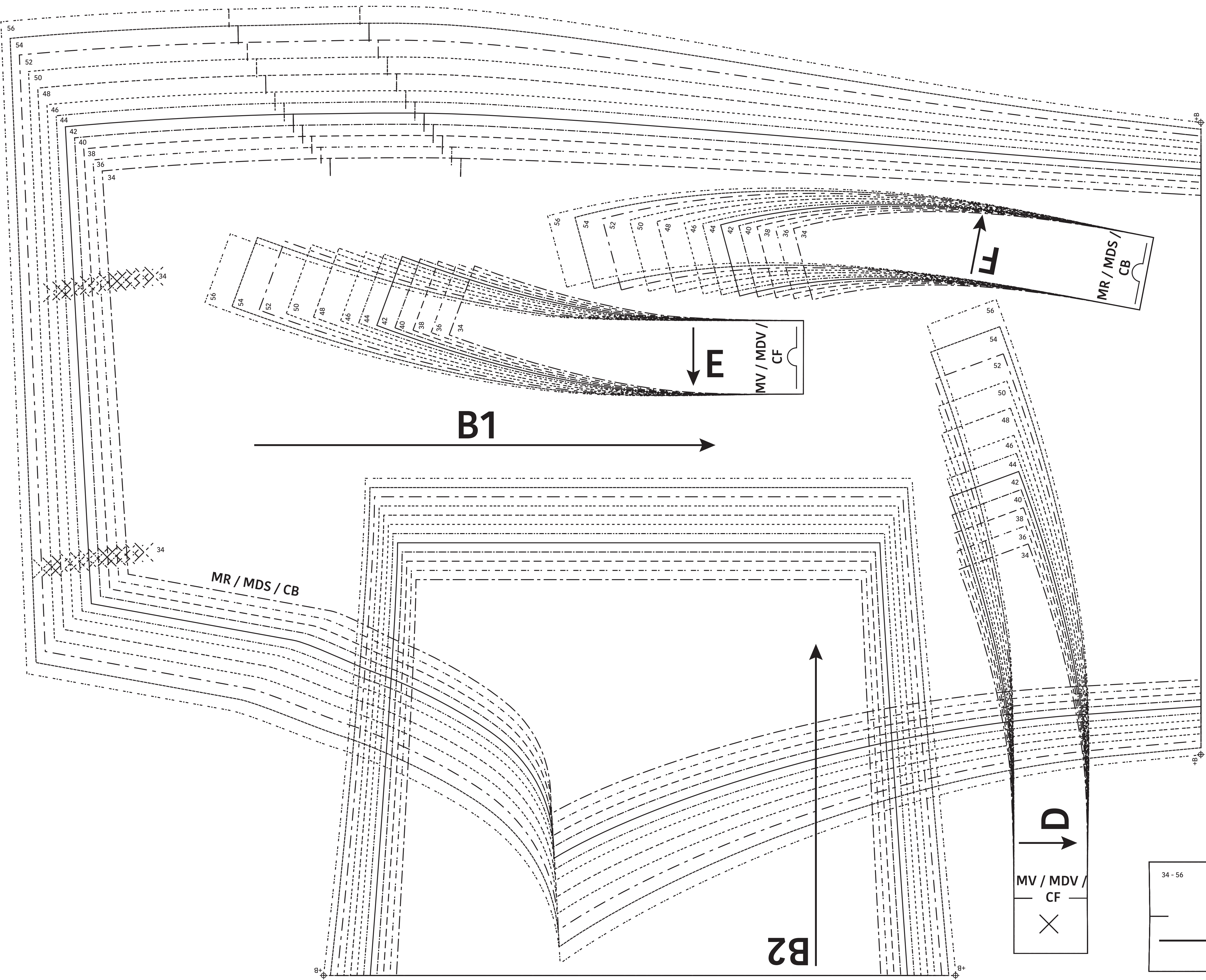
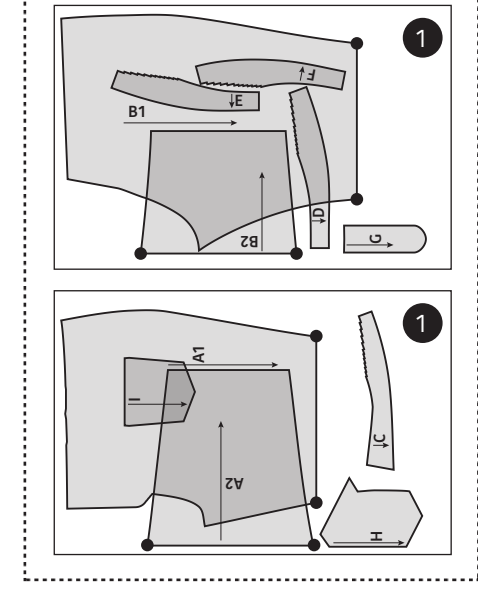
Broek / Pantalon /
Trousers

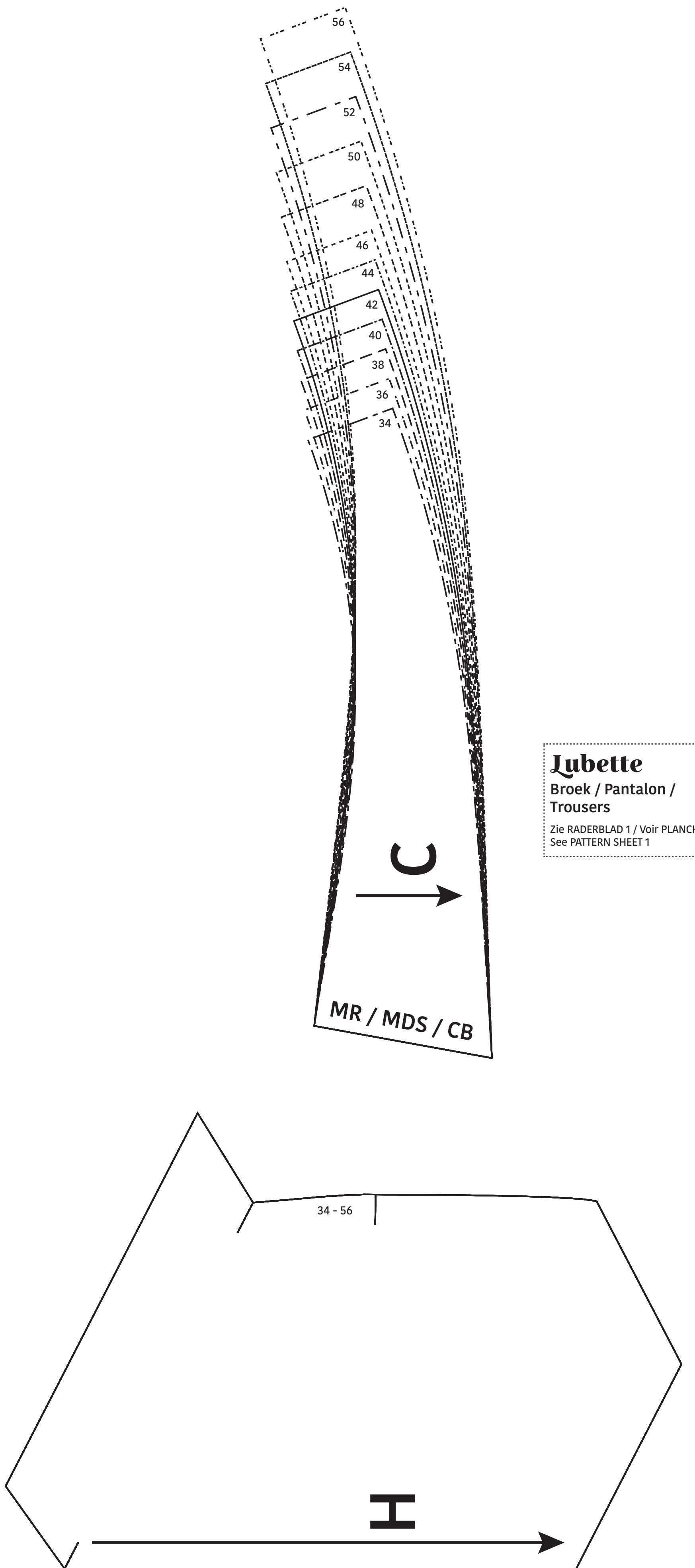
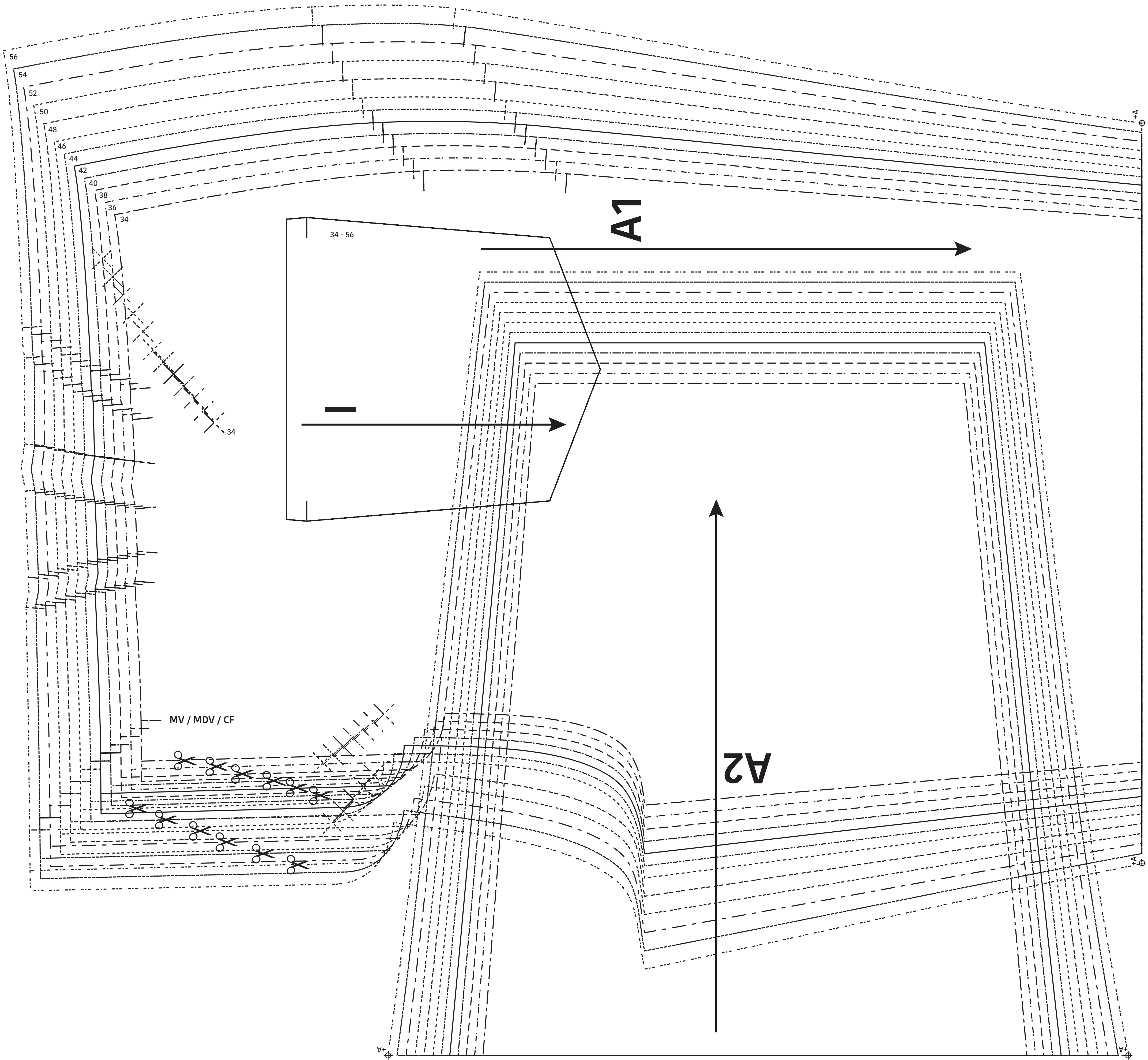
Maten / Tailles / Sizes:

---	34
---	36
---	38
---	40
---	42
---	44
---	46
---	48
---	50
---	52
---	54
---	56

- Patroondelen / Pièces du patron /
Pattern pieces:
- A voorpand / devant / front panel
 - B rugpand / dos / back panel
 - C pas RP / emplacement DS / yoke BP
 - D tailleband LVP / ceinture DVG /
waistband LFP
 - E tailleband RVP / ceinture DVD /
waistband RFP
 - F tailleband RP / ceinture DS /
waistband BP
 - G gulfstuk / braguette / fly
 - H zak VP / poche DV / pocket FP
 - I zak RP / poche DS / pocket BP

LET OP! De patroondelen bevinden zich op verschillende raderbladen.
ATTENTION! Les pièces du patron sont réparties sur plusieurs planches.
IMPORTANT! The pattern pieces are located on different pattern sheets.





Lubette
 Broek / Pantalon /
 Trousers
 Zie RADERBLAD 1 / Voir PLANCHE 1 /
 See PATTERN SHEET 1