

---	34
---	36
---	38
---	40
---	42
---	44
---	46
---	48
---	50
---	52
---	54
---	56

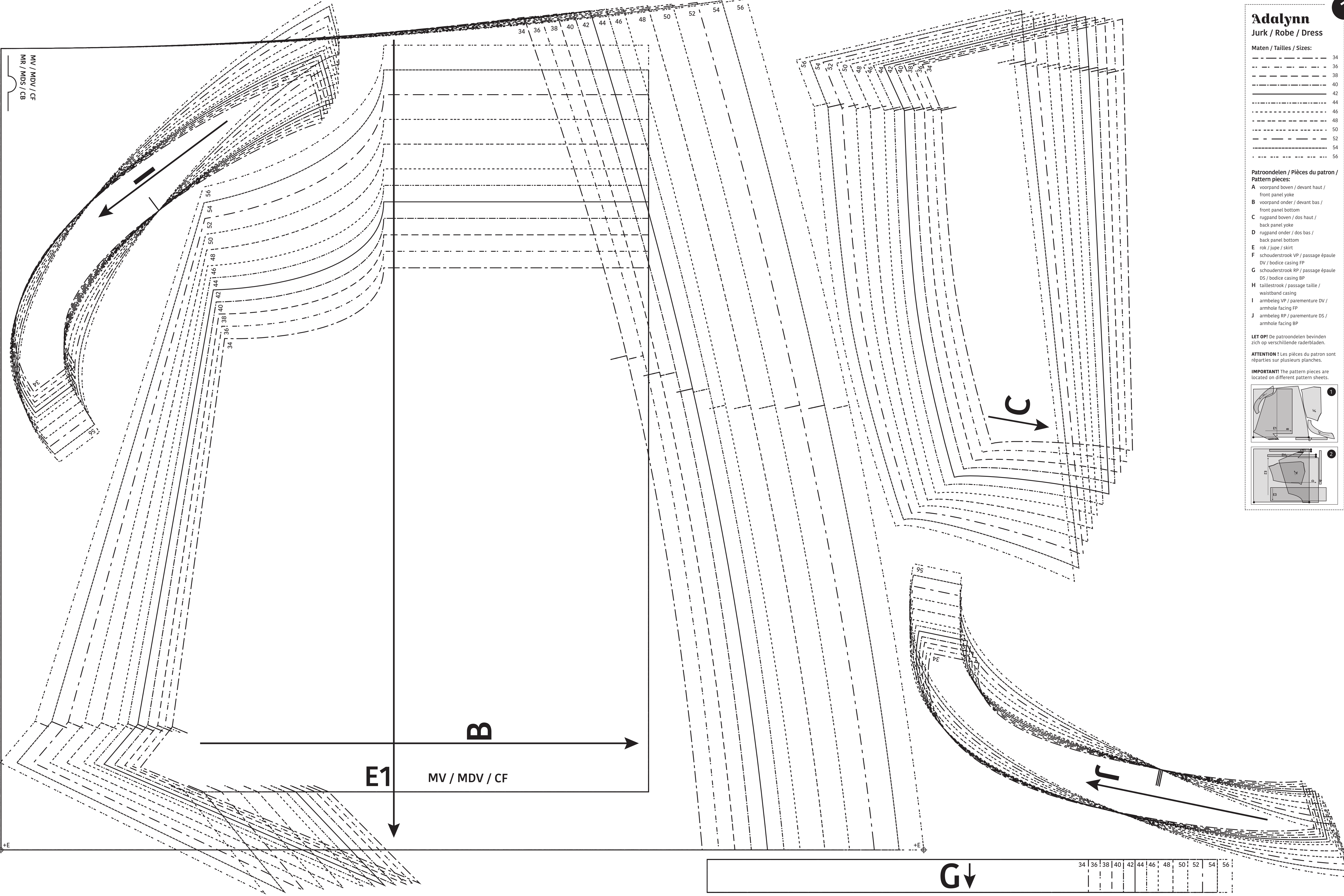
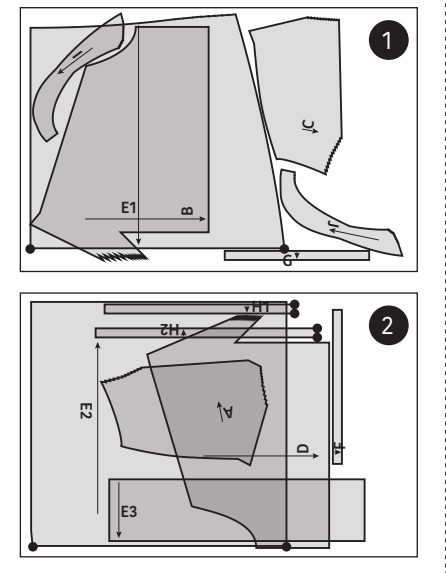
Patroondelen / Pièces du patron / Pattern pieces:

- A voorpand boven / devant haut / front panel yoke
- B voorpand onder / devant bas / front panel bottom
- C rugpand boven / dos haut / back panel yoke
- D rugpand onder / dos bas / back panel bottom
- E rok / jupe / skirt
- F schouderstrook VP / passage épaule DV / bodice casing FP
- G schouderstrook RP / passage épaule DS / bodice casing BP
- H taillestrook / passage taille / waistband casing
- I armband VP / parementure DV / armhole facing FP
- J armband RP / parementure DS / armhole facing BP

LET OP! De patroondelen bevinden zich op verschillende raderbladen.

ATTENTION! Les pièces du patron sont réparties sur plusieurs planches.

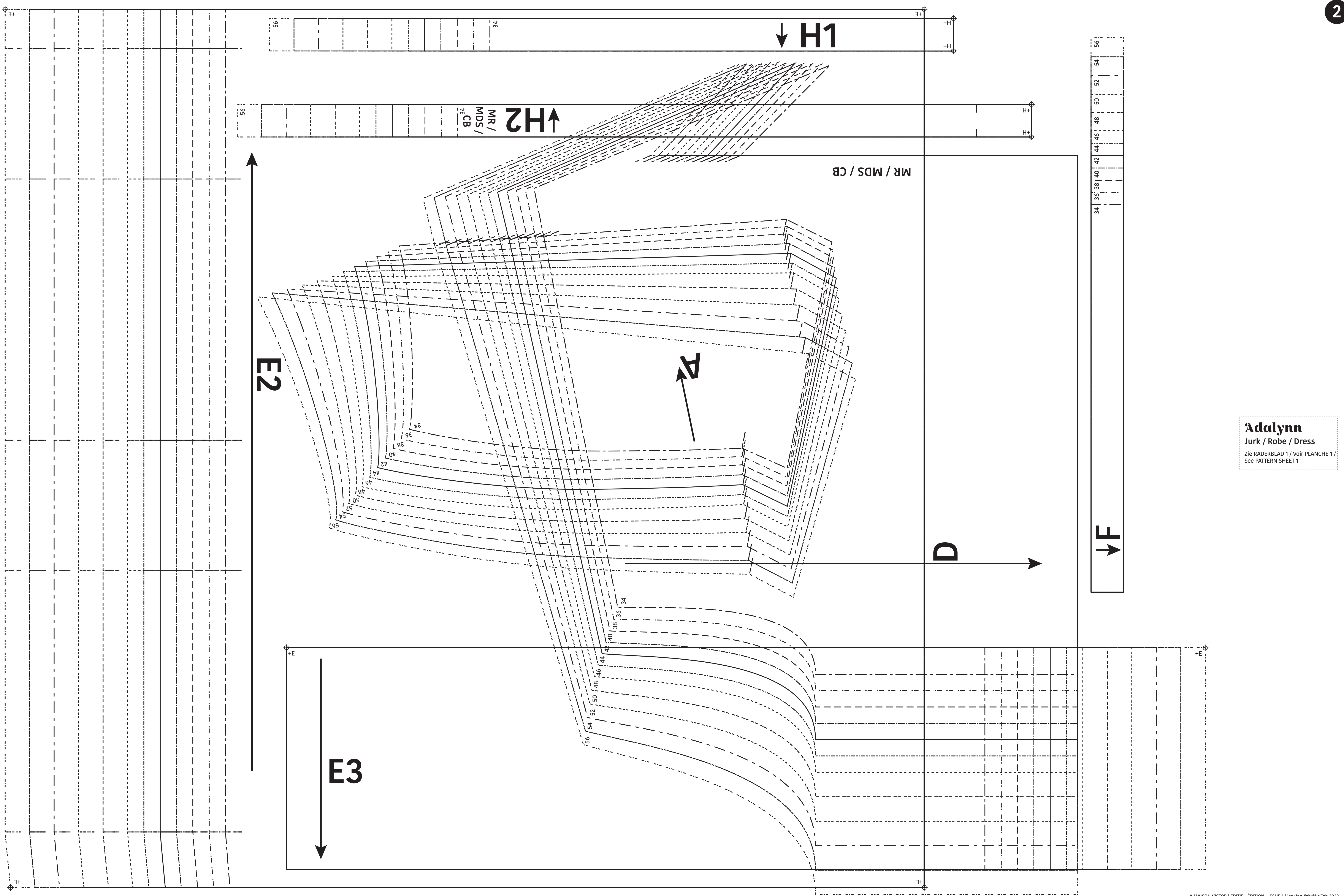
IMPORTANT! The pattern pieces are located on different pattern sheets.



MV / MDV / CF
MR / MDS / CB

MV / MDV / CF

34 | 36 | 38 | 40 | 42 | 44 | 46 | 48 | 50 | 52 | 54 | 56



Adalynn
 Jurk / Robe / Dress
 Zie RADERBLAD 1 / Voir PLANCHE 1 /
 See PATTERN SHEET 1