

# Fauve

Top

Maten / Tailles / Sizes / Größen:

.....	34
-----	36
-----	38
-----	40
-----	42
-----	44
-----	46
-----	48

### Patroondelen / Pièces du patron / Pattern pieces / Schnittteile:

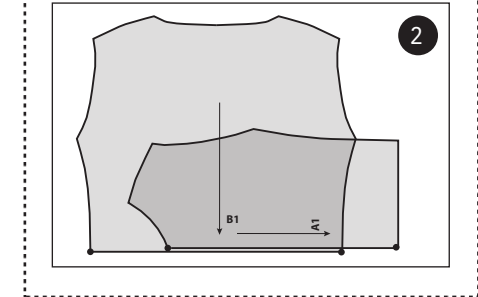
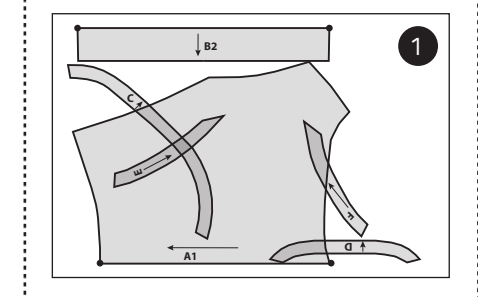
- A** voorpand / devant / front panel / Vorderteil
- B** ruggand / dos / back panel / Rückenteil
- C** halsbeleg VP / parementure d'encolure du devant / neckline facing front panel / Halsbeleg VT
- D** halsbeleg RP / parementure d'encolure du dos / neckline facing back panel / Halsbeleg RT
- E** beleg armuitsnijding VP / parementure d'emmanchure du devant / arm facing front / Beleg Armausschnitt VT
- F** beleg armuitsnijding RP / parementure d'emmanchure du dos / arm facing back / Beleg Armausschnitt RT

**LET OP!** De patroondelen bevinden zich op verschillende raderbladen.

**ATTENTION!** Les pièces du patron sont réparties sur plusieurs planches.

**IMPORTANT!** The pattern pieces are located on different pattern sheets.

**ACHTUNG!** Die schnittteile befinden sich auf unterschiedlichen Schnittmusterbögen.



B2 ↓

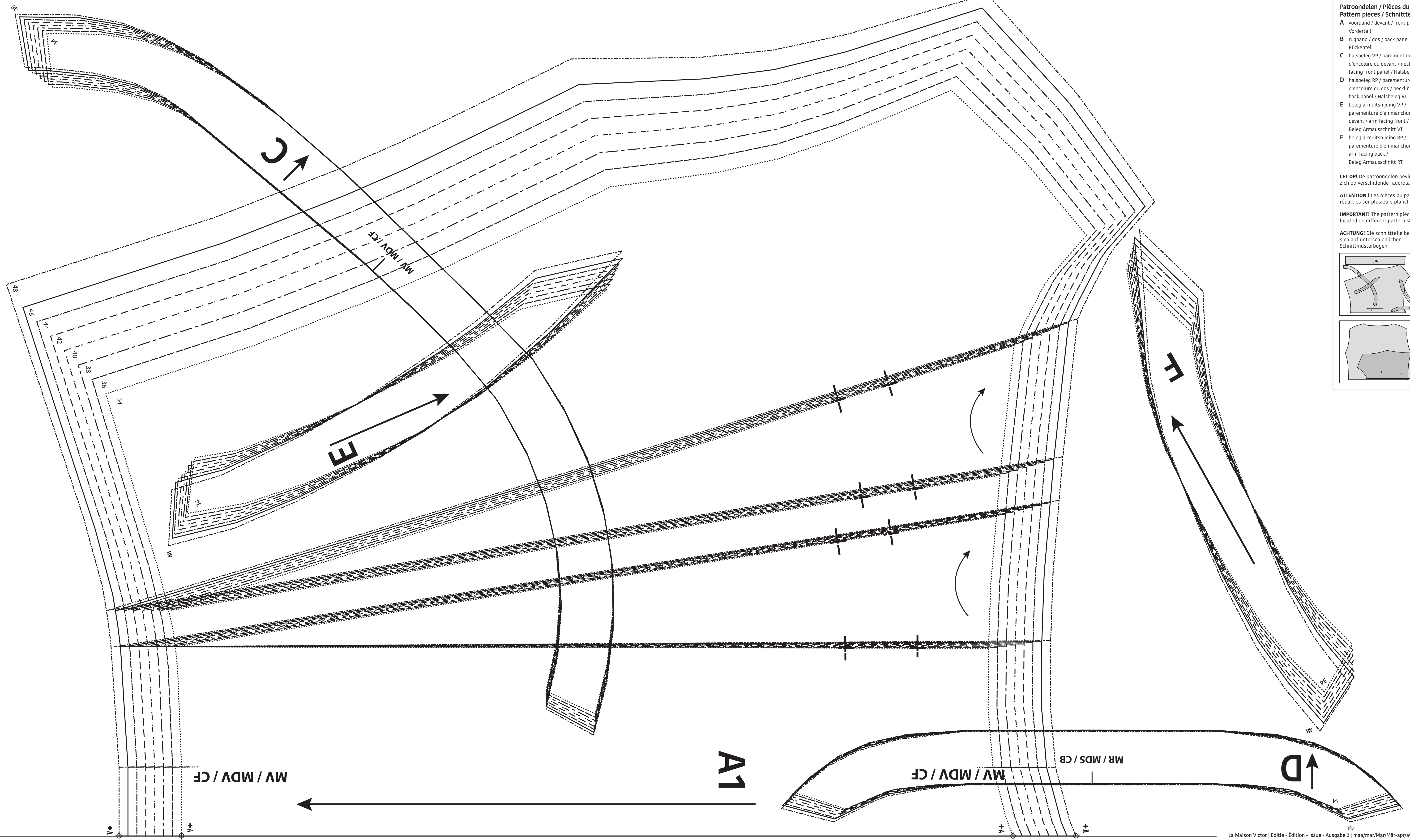
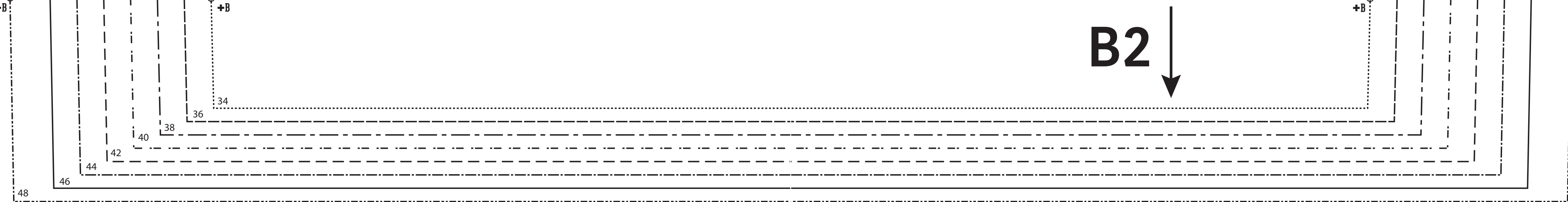
C ↗

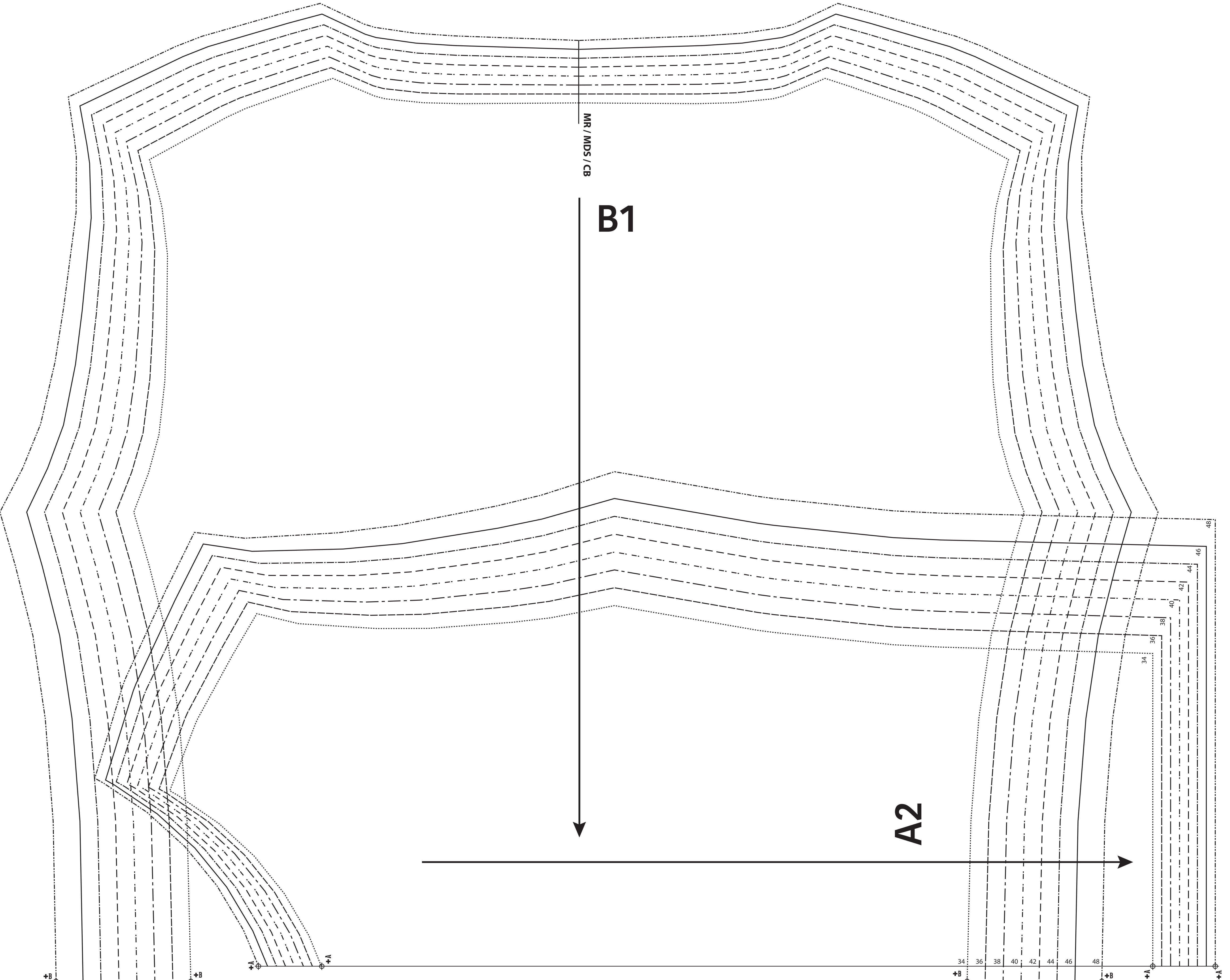
E ↘

F ↘

D ↑

A1 ←





**Fauve**  
 Top  
 Zie RADERBLAD 1 / Voir PLANCHE 1 /  
 See PATTERN SHEET 1