

# Suvi

## Jurk / Robe / Dress / Kleid

### Maten / Tailles / Sizes / Größen:

.....	30
-----	32
-----	34
- . - . - . - . - . - . - . - . - .	36
-----	38
-----	40
=====	42
-----	44
-----	46
-----	48

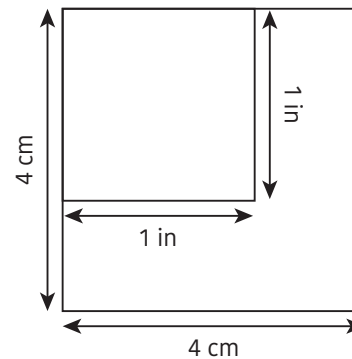
### Patroondelen / Pièces du patron / Pattern pieces / Schnittteile:

- A** voorpand top / devant haut /  
top front panel / Vorderteil Top
- B** rugpand top / dos haut /  
top back panel / Rückenteil Top
- C** rokstrook boven / volant jupe haut /  
top skirt strip / oberer Rockstreifen
- D** rokstrook midden / volant jupe  
milieu / middle skirt strip /  
mittlerer Rockstreifen
- E** rokstrook onder / volant jupe bas /  
bottom skirt strip /  
unterer Rockstreifen
- F** beleg VP / parementure DV /  
facing FP / Besatz VT
- G** beleg RP / parementure DS /  
facing BP / Besatz RT
- H** mouw / manche / sleeve / Ärmel

### Patroonschema / Schéma du Patron / Pattern Diagram / Übersichtsplan zum Zusammenkleben

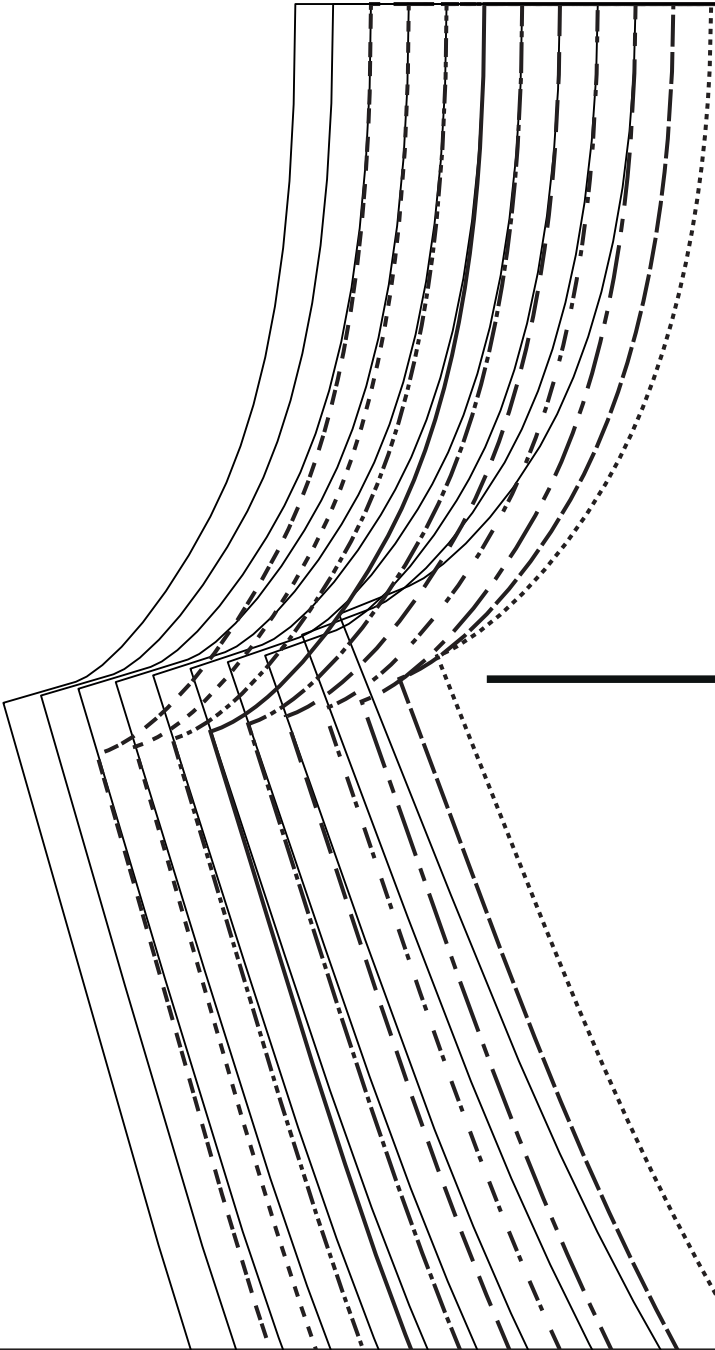
1	2	3	4	5	6
7	8	9	10	11	12
13	14	15	16	17	18
19	20				

### Controlevierkant / Carré de controle / Test square / Kontrollquadrat

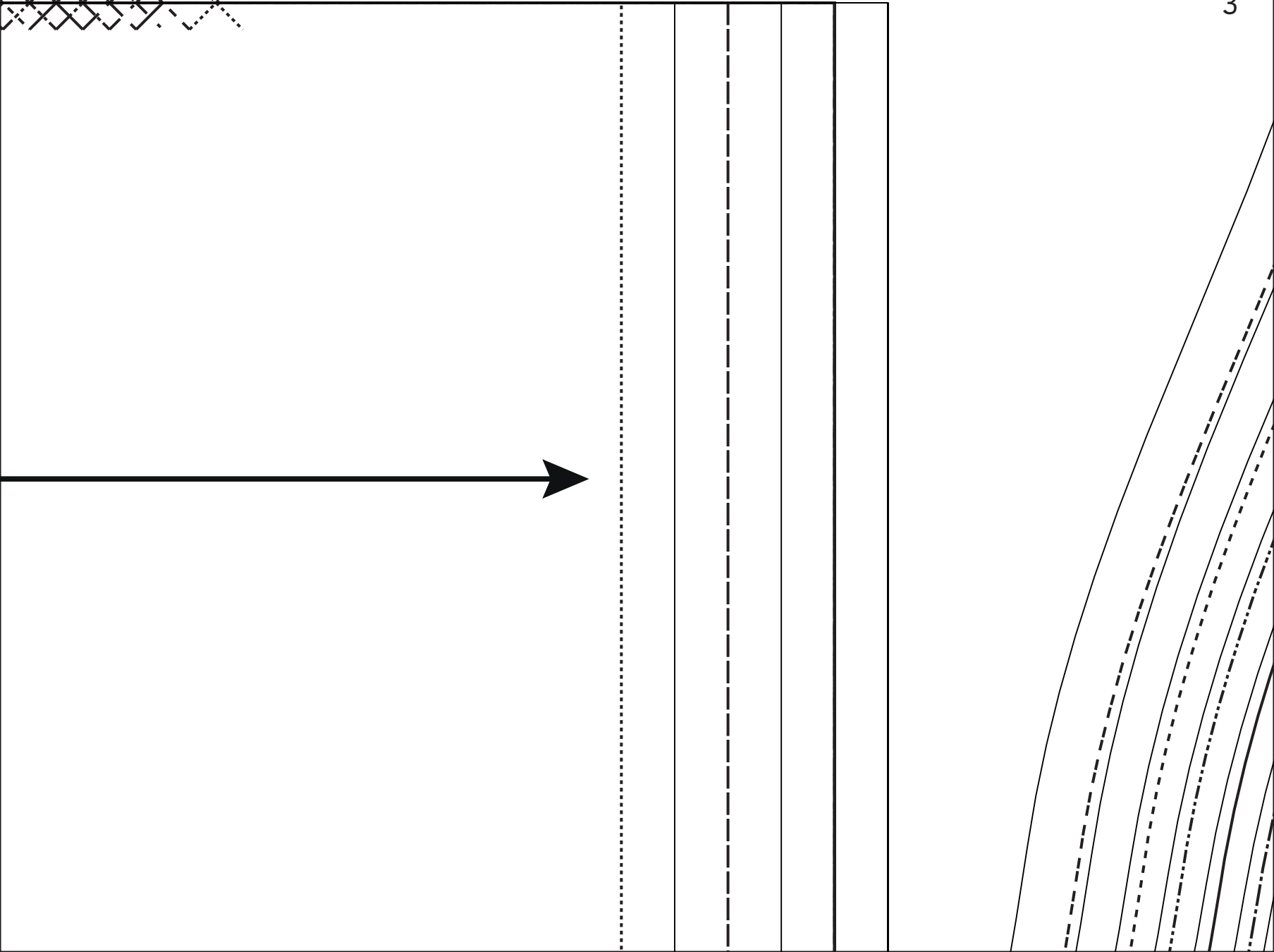


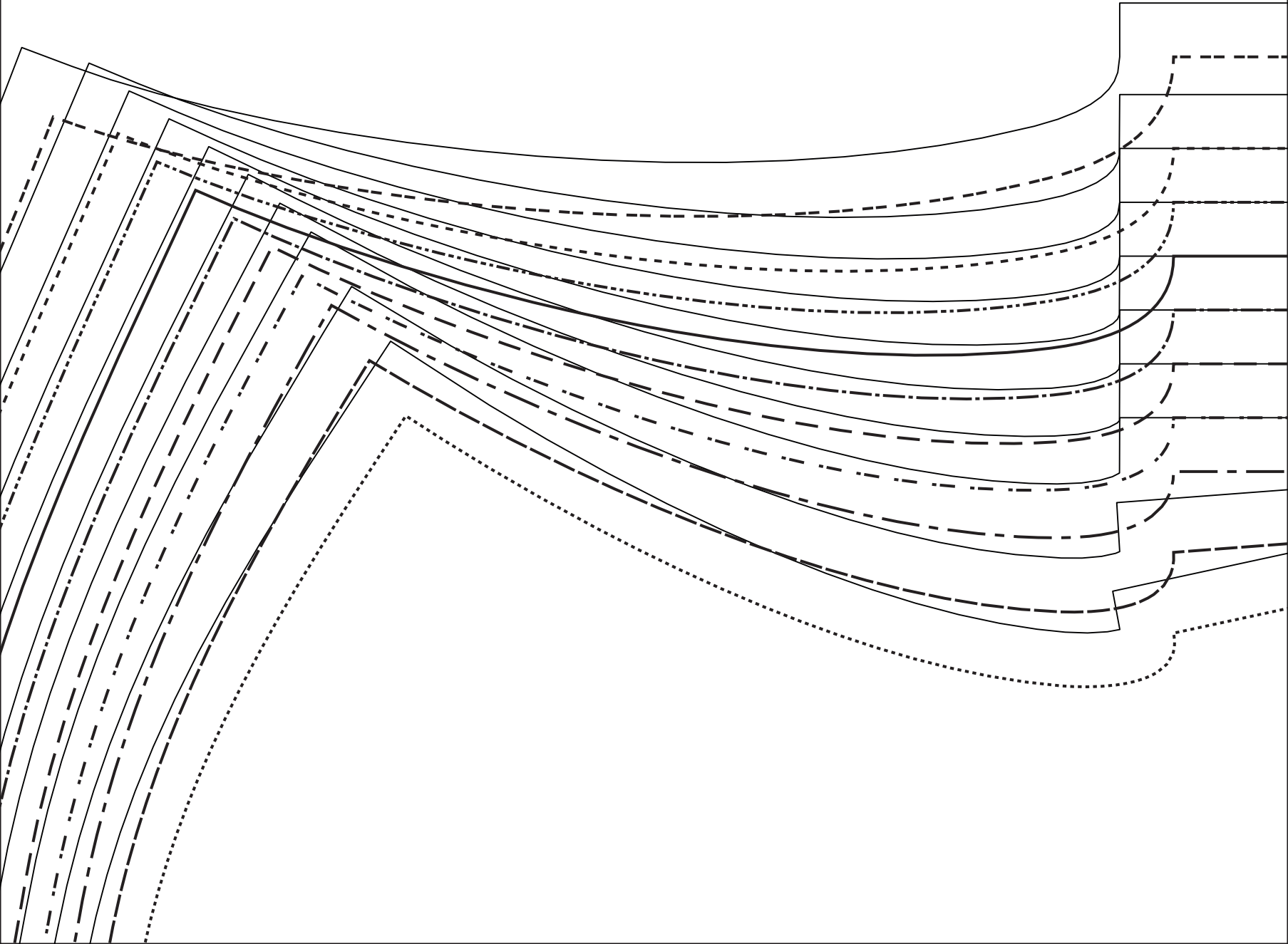


MR/MDS/CB/RM

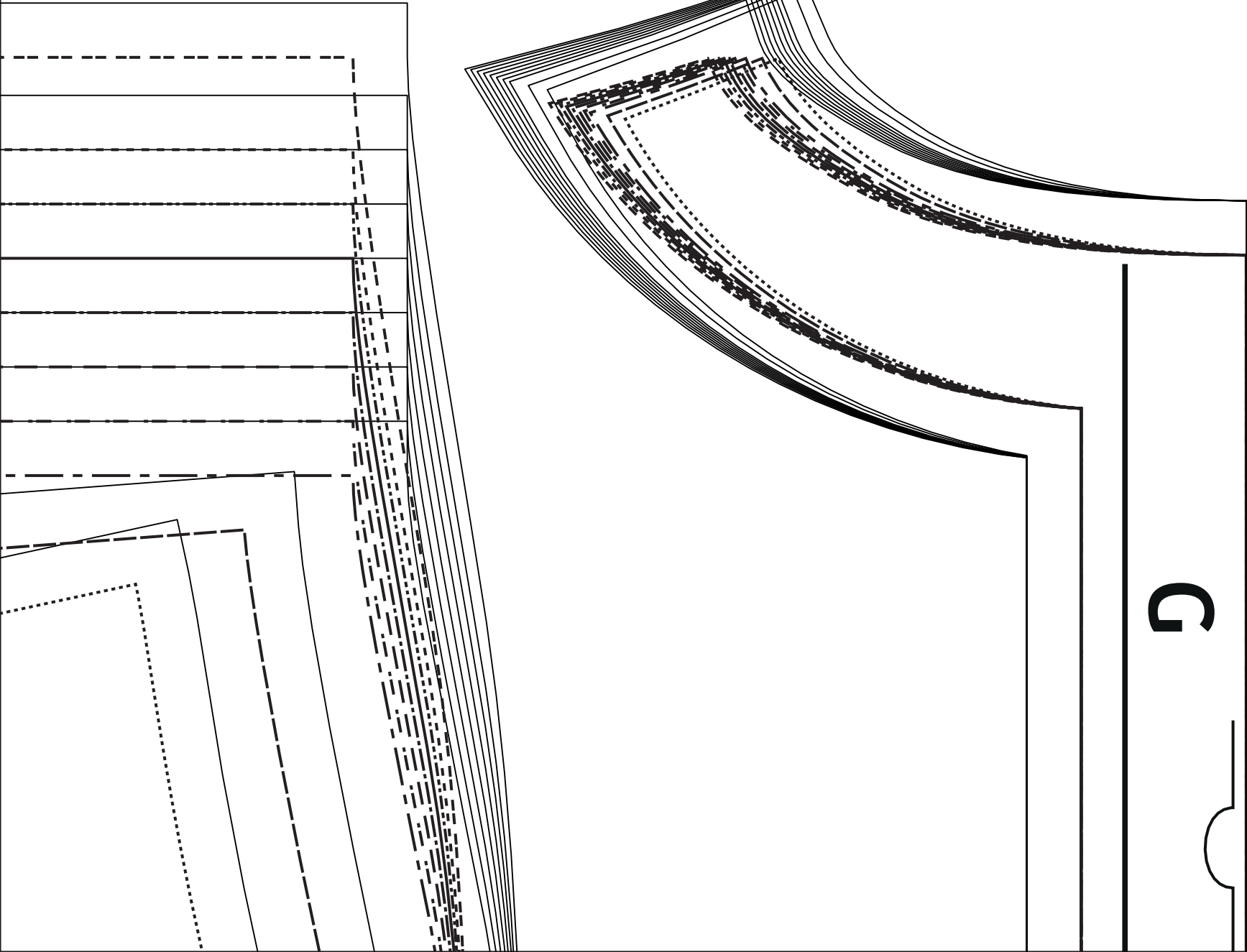


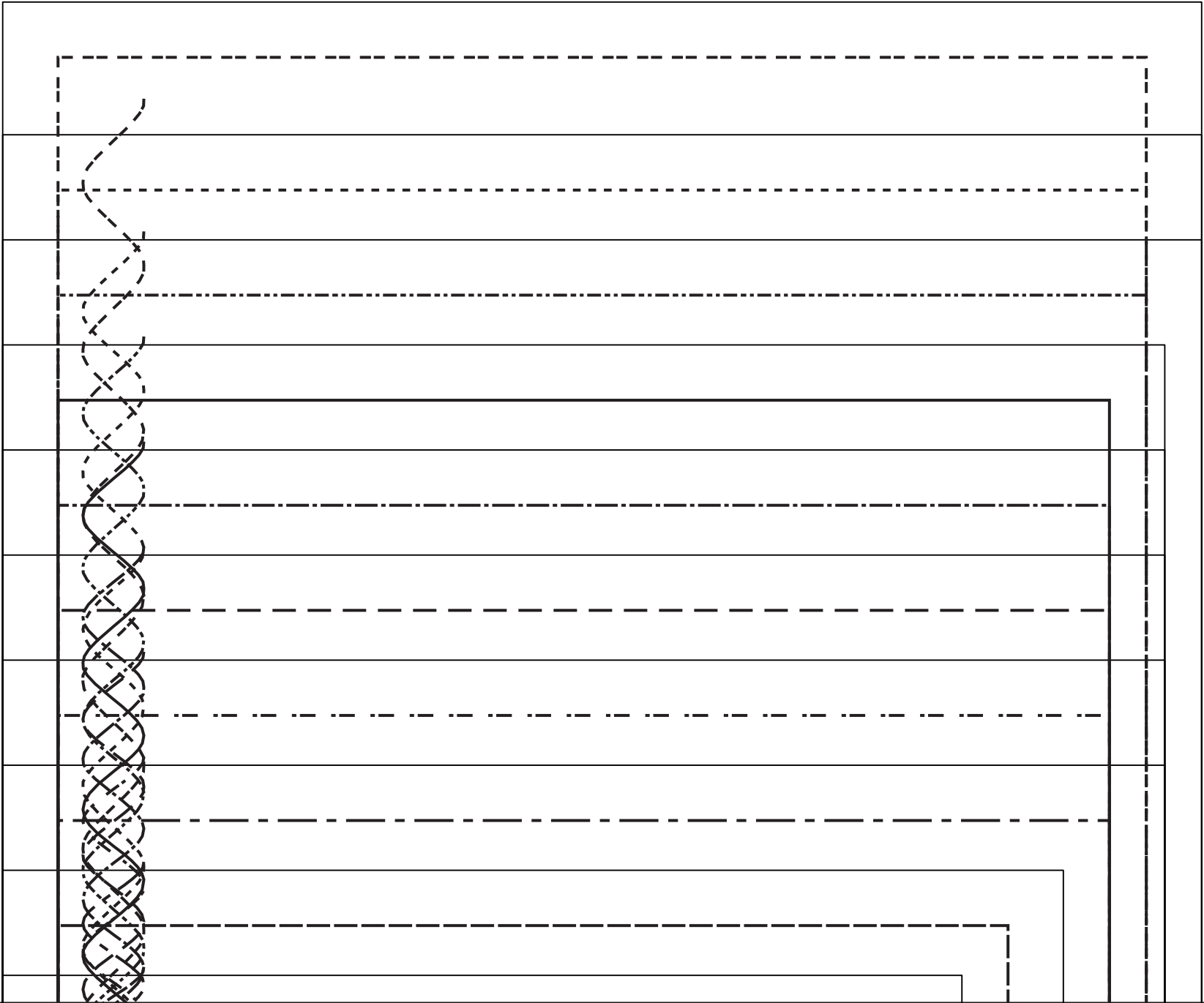
**B**

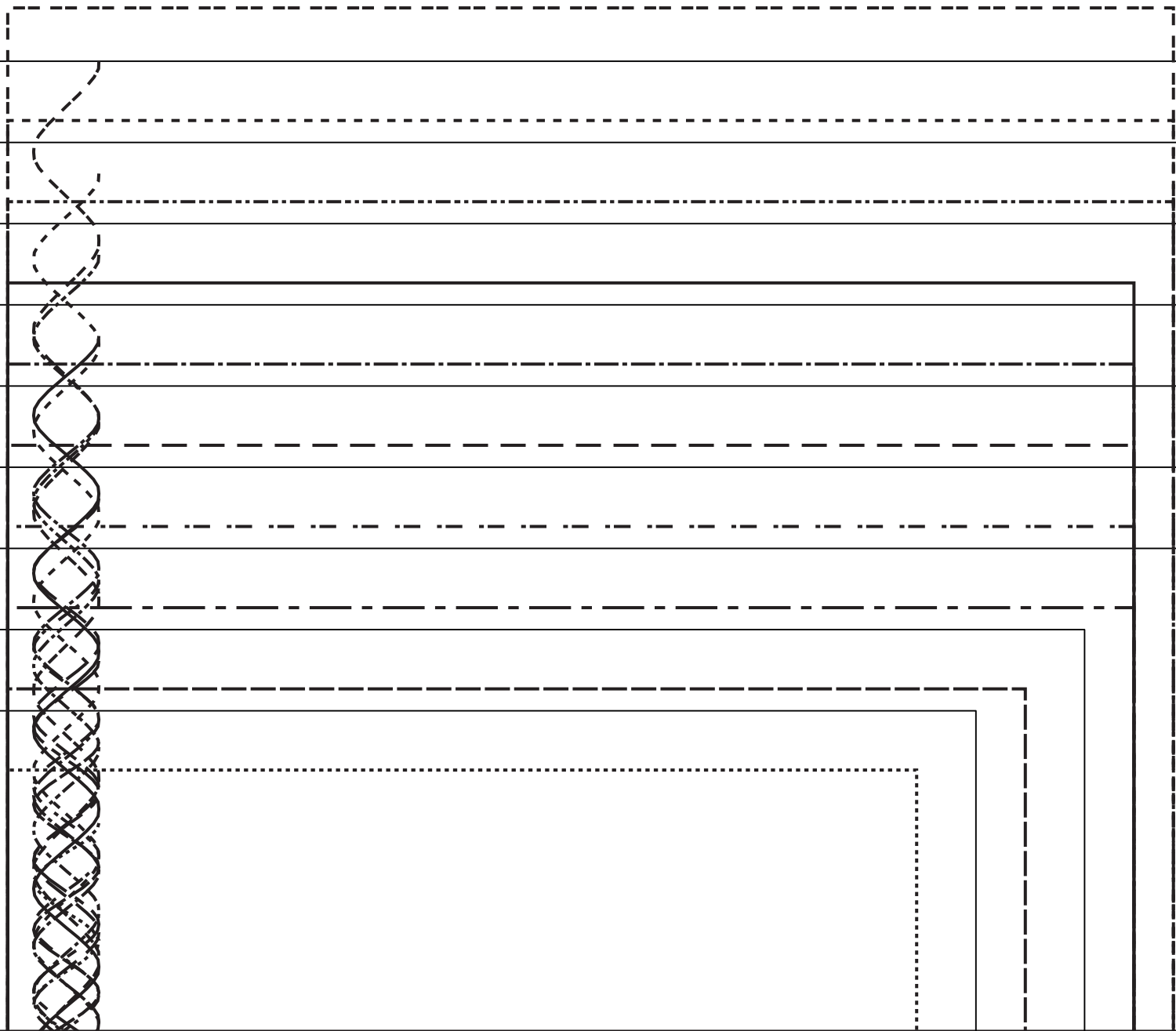


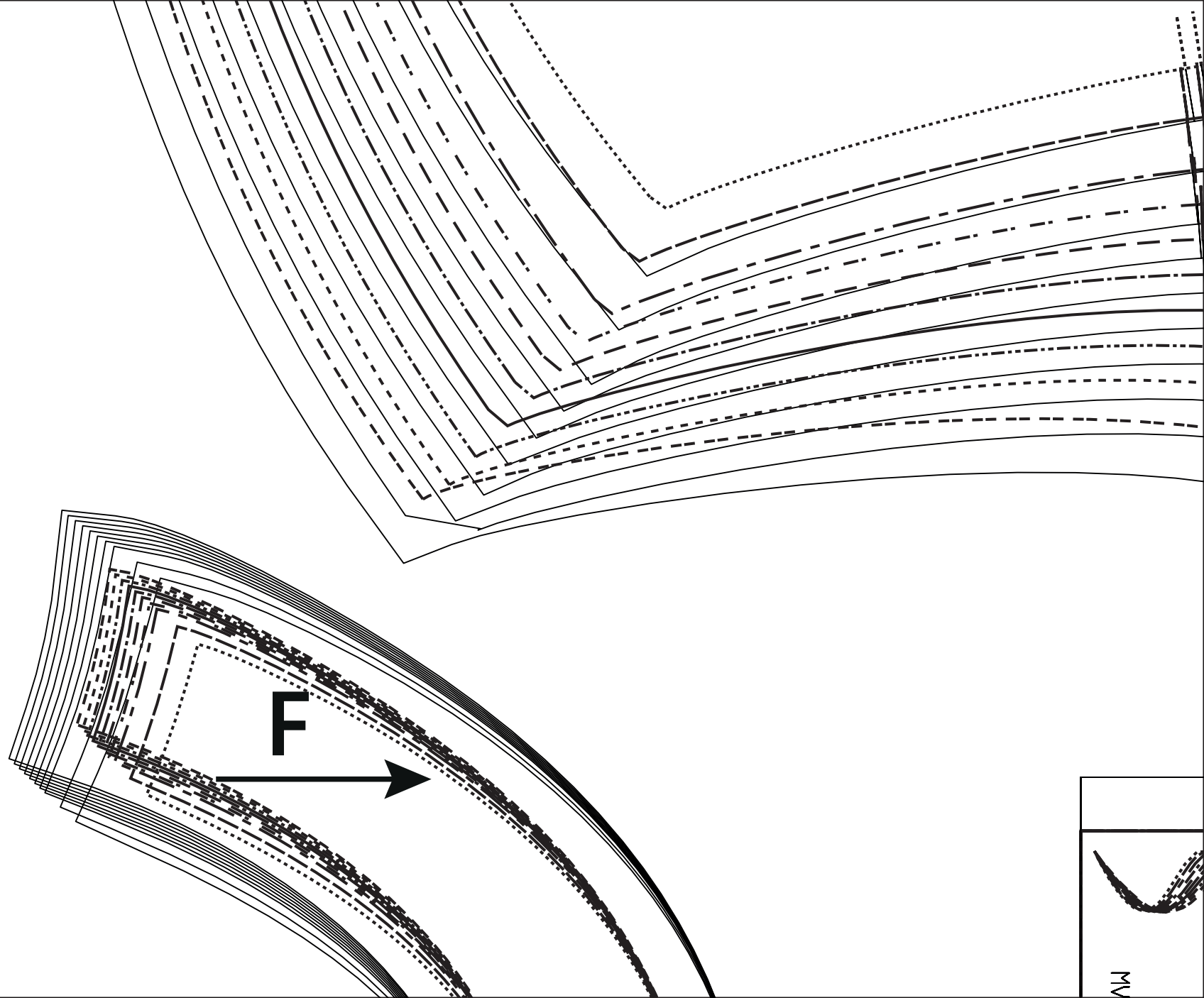


5



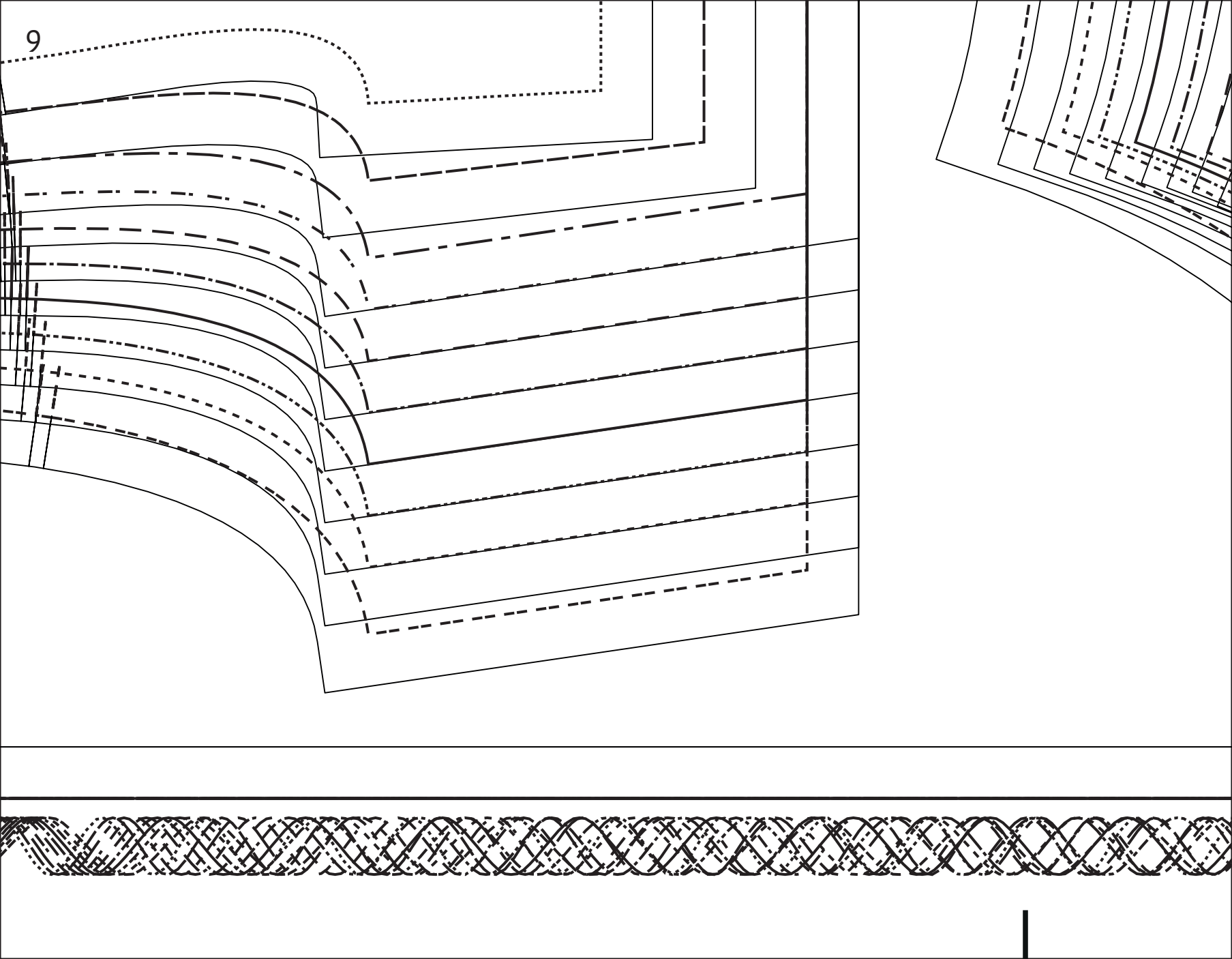




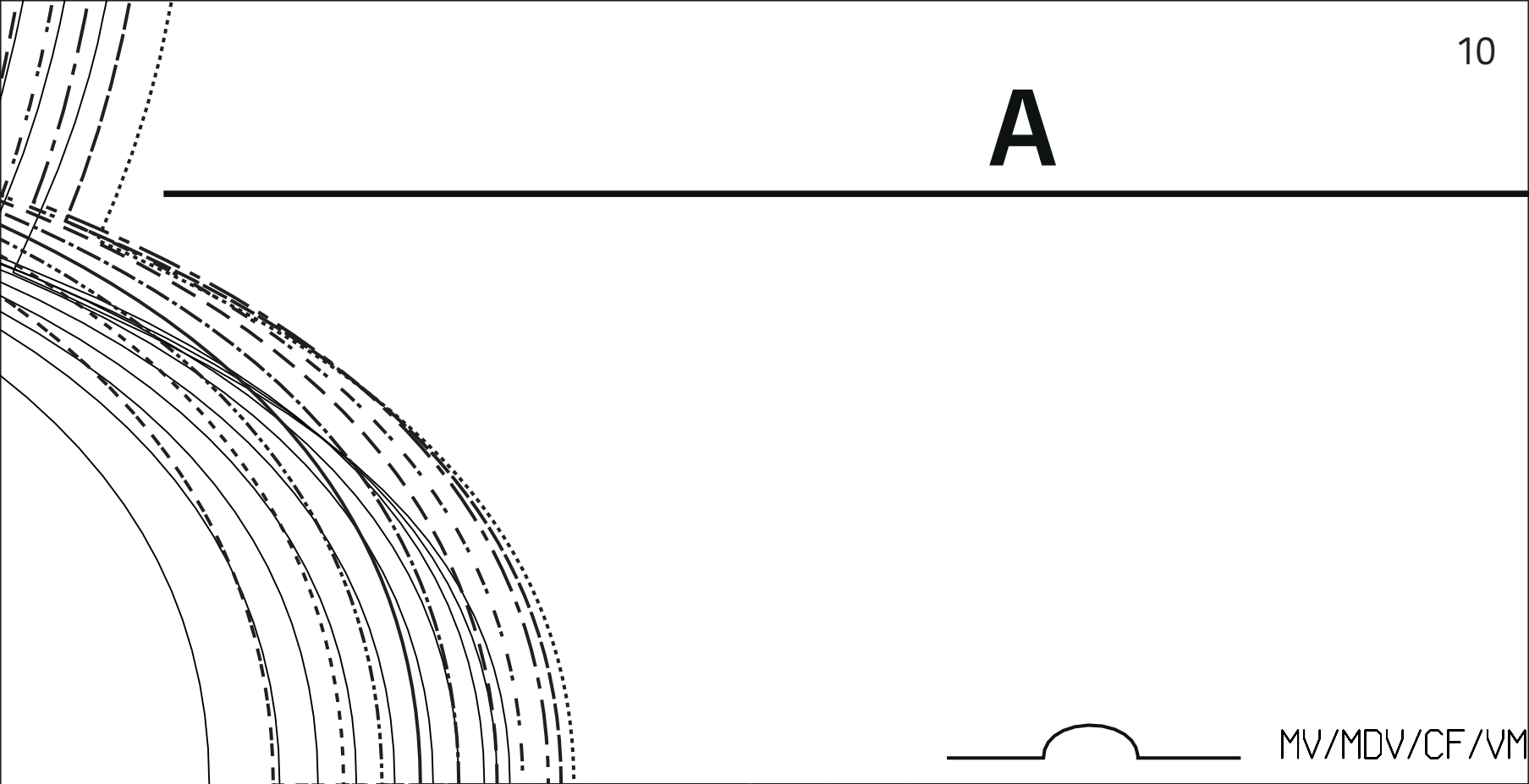




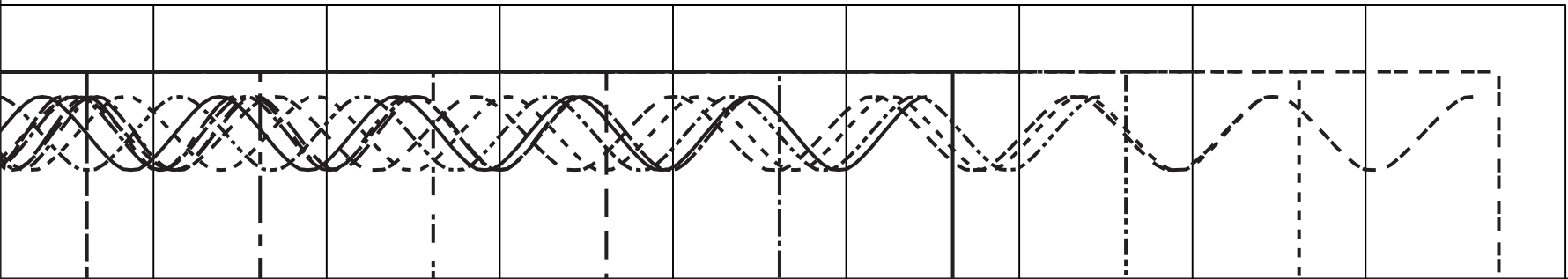
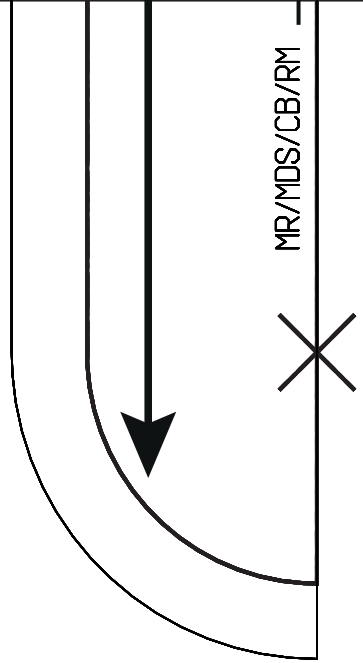
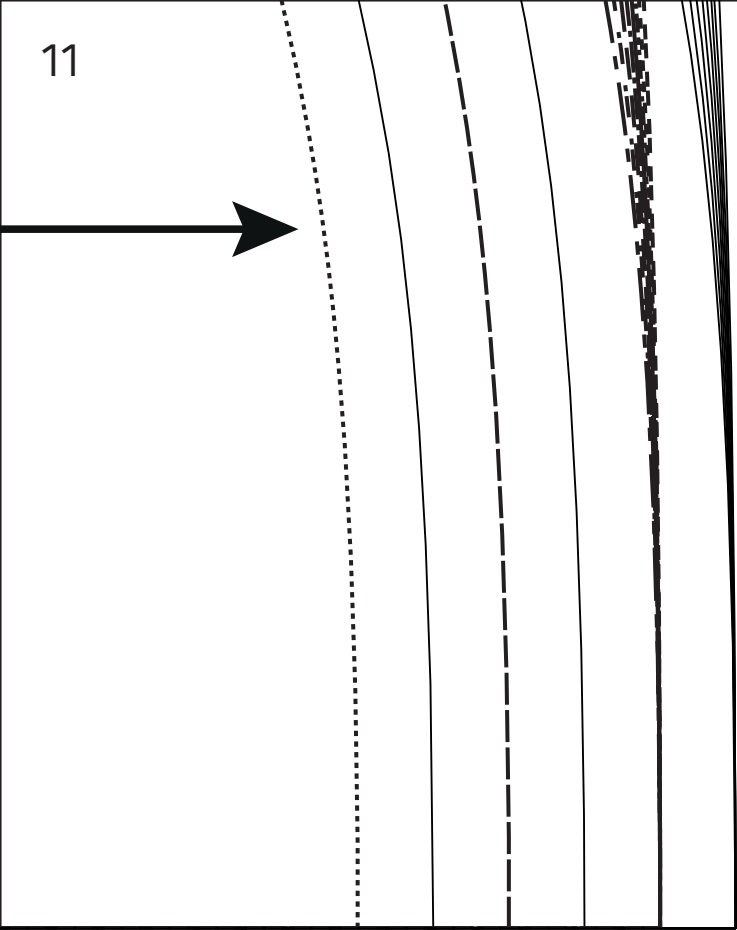
9

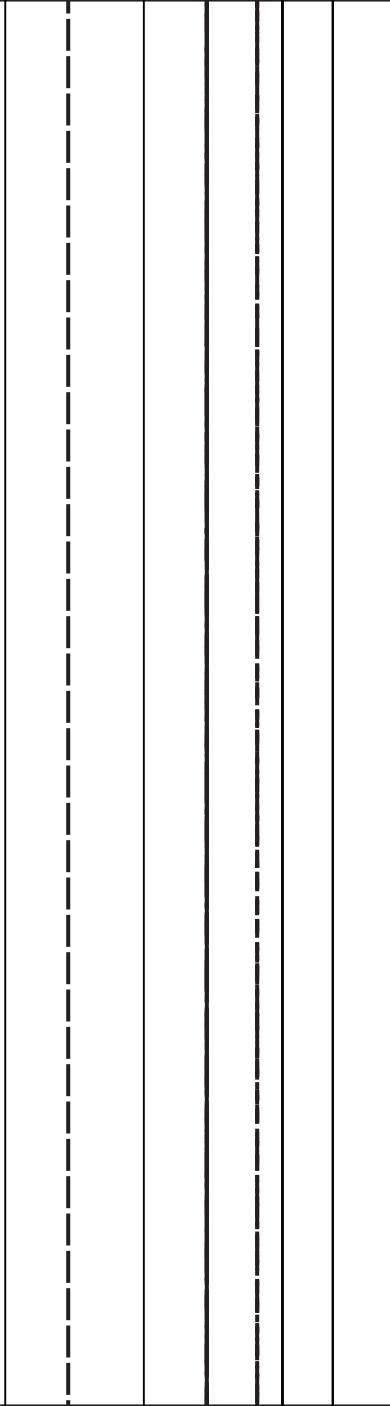
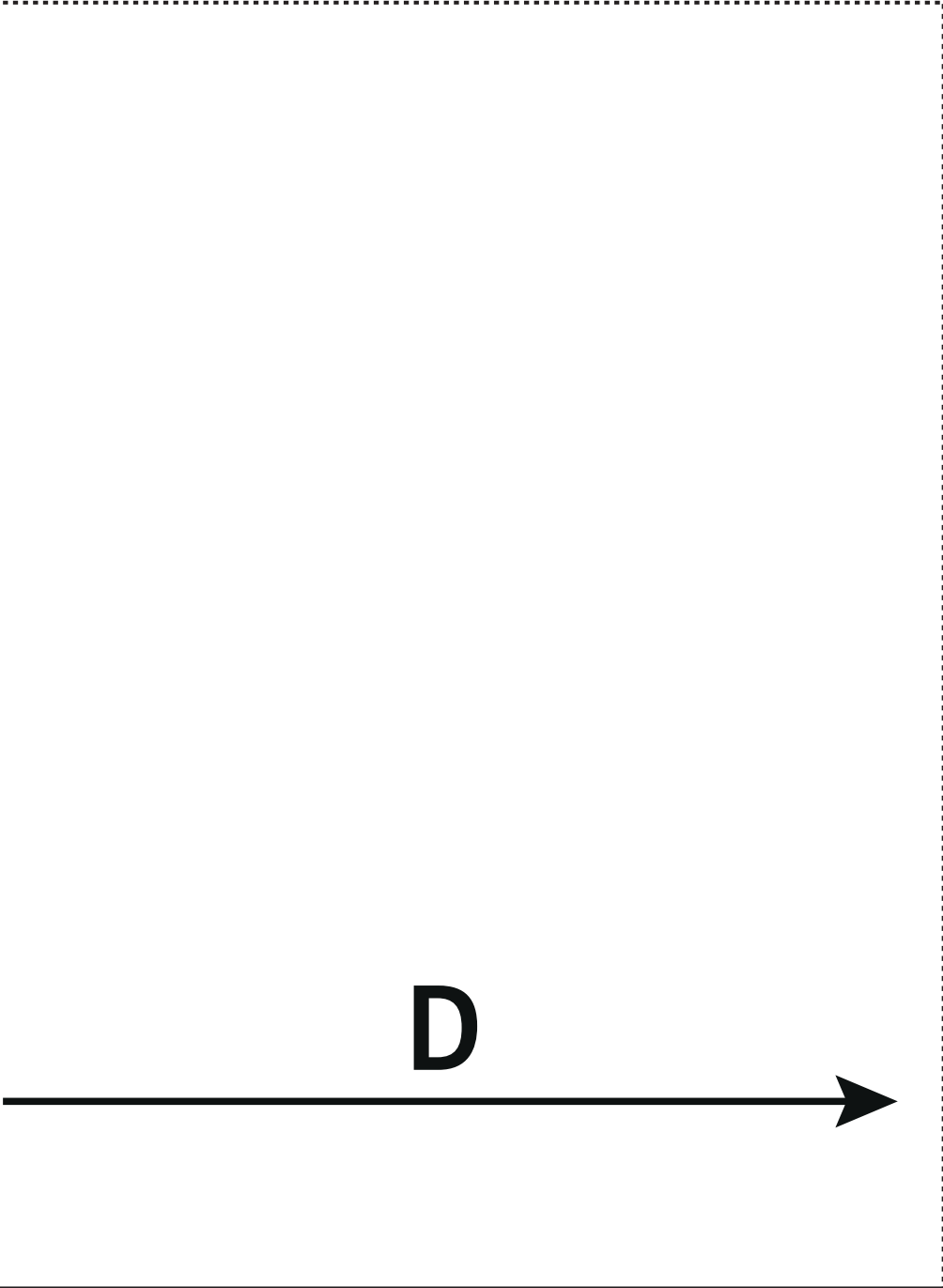


A



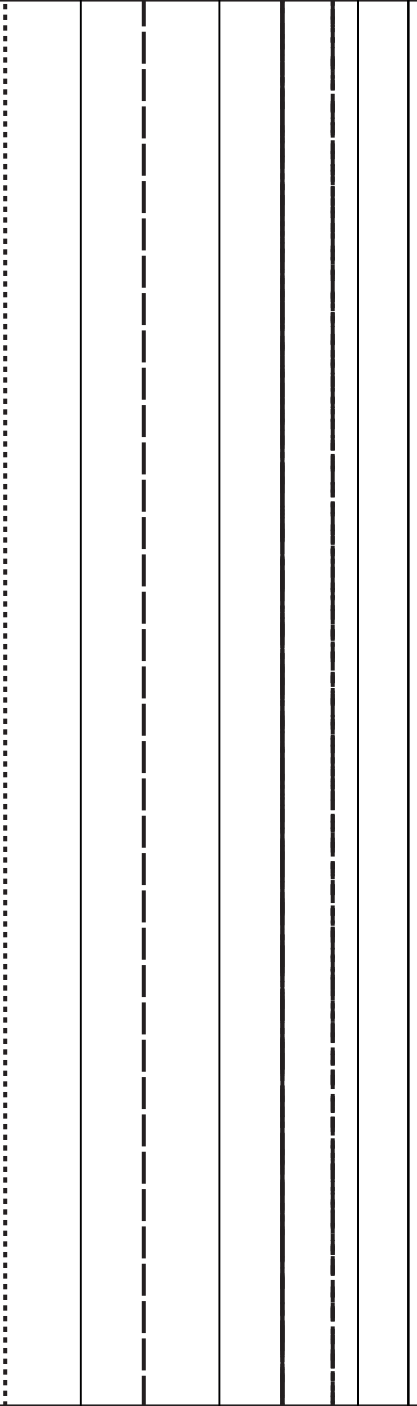
11







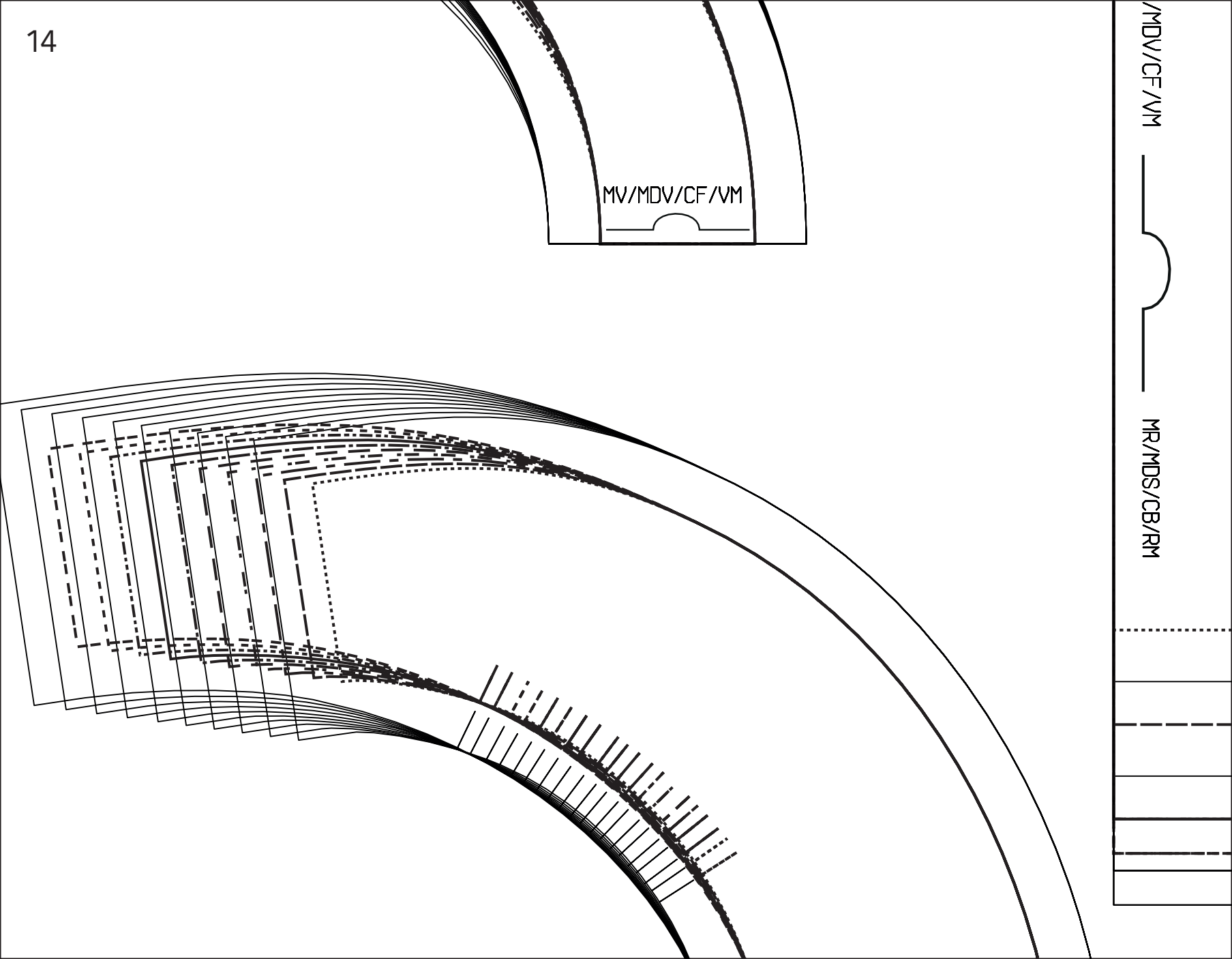
**C**



MV/MDV/CF/VM

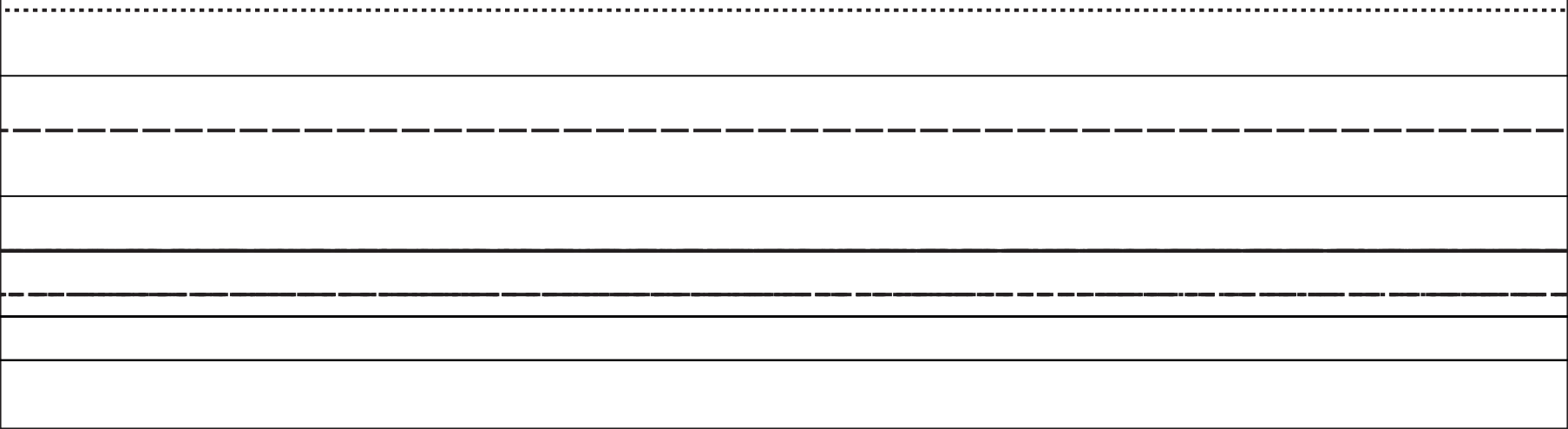
/MDV/CF/VM

MR/MDS/CB/RM



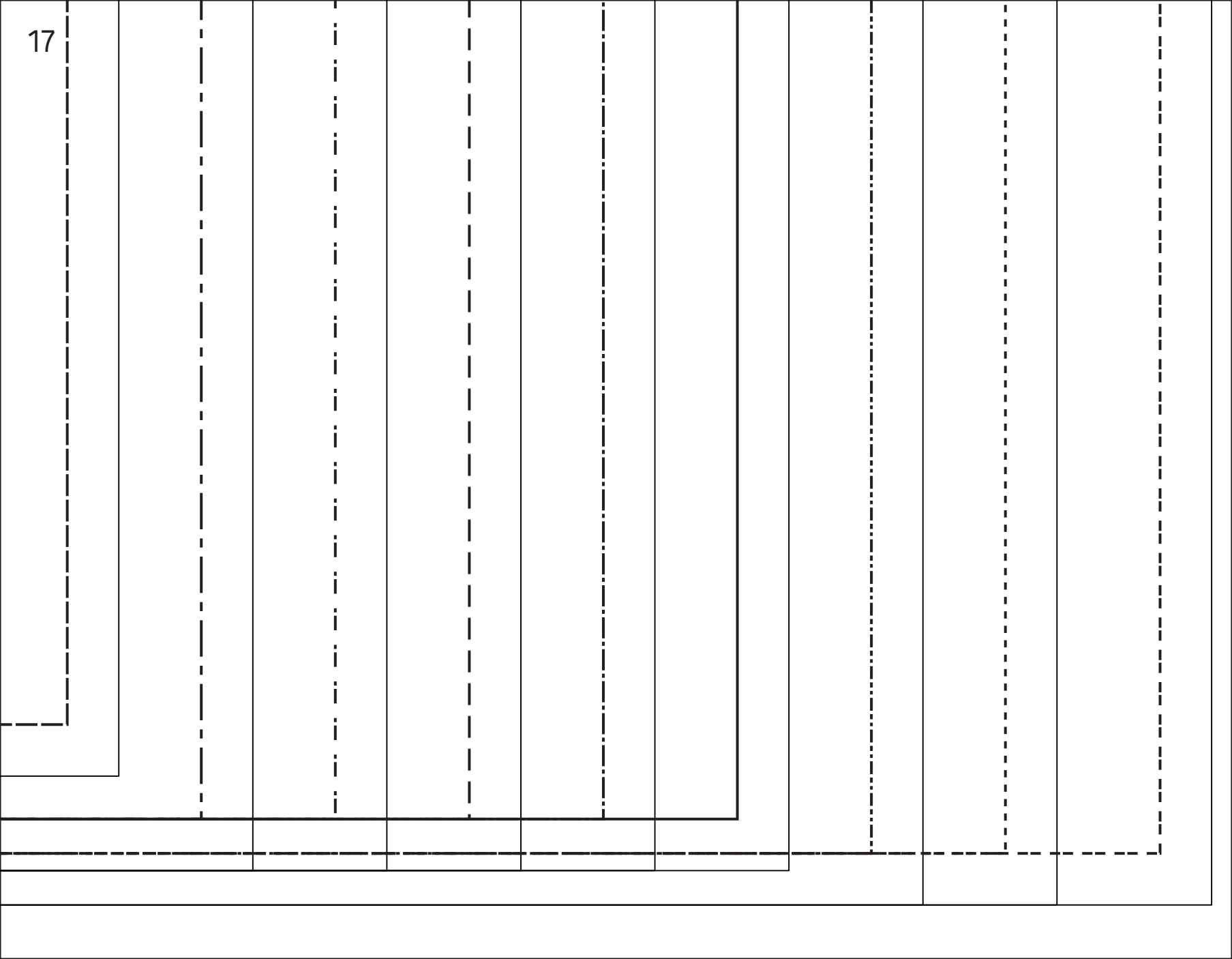
15

$\mathcal{E}$



The image shows a blank sheet of white paper with a black border. In the top-left corner, the number '16' is printed. The page is divided into several horizontal sections. A large dotted rectangular area occupies the top half of the page. Below this, there are several horizontal lines: a dashed line, a solid line, another dashed line, and a final solid line at the bottom. The area between the dotted line and the first solid line is empty, while the areas between the subsequent lines are also empty.



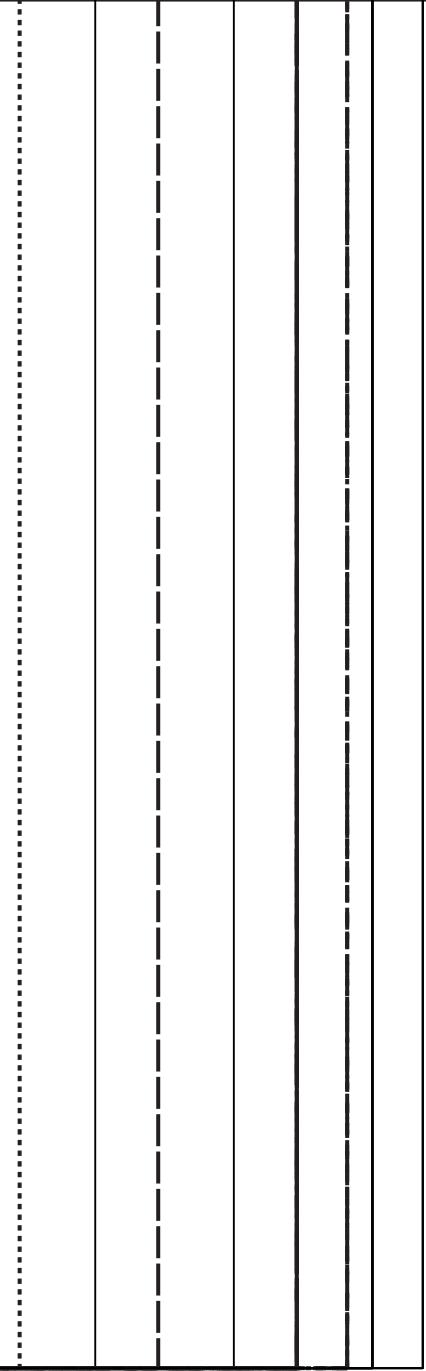




MV/MDV/CF/VM



MR/MDS/CB/RM



MV/MDV/CF/VM



MR/MDS/CB/RM

--	--	--	--	--	--	--	--	--	--

