

Martin

Jas / Veste / Jacket

Maten / Tailles / Sizes:

.....	XXS
-----	XS
-----	S
-----	M
-----	L
-----	XL
-----	XXL
-----	XXXL

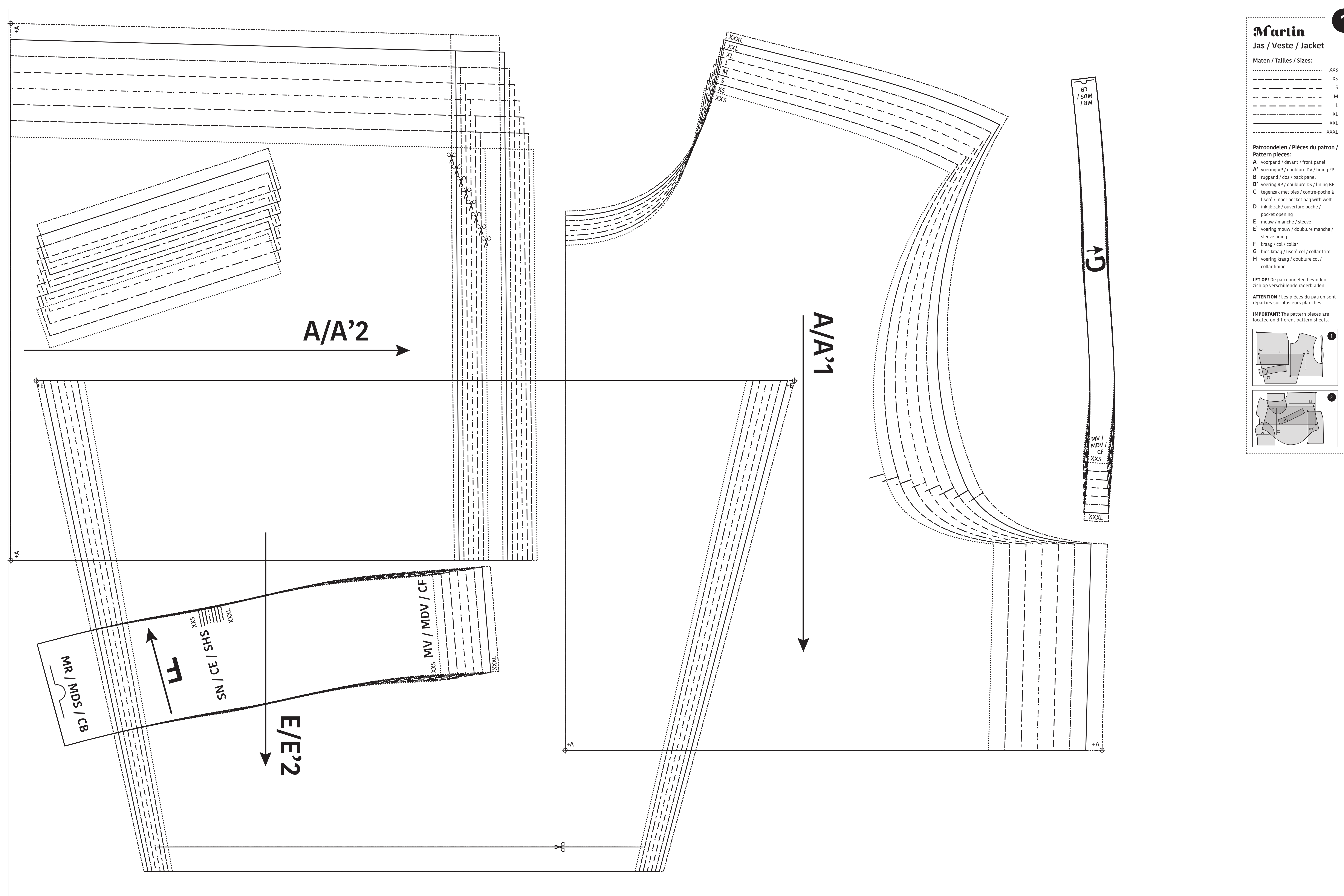
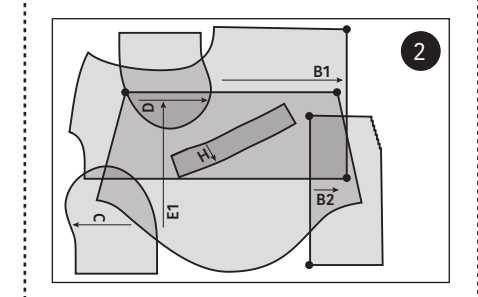
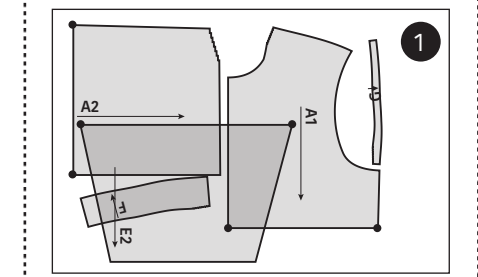
Patroondelen / Pièces du patron / Pattern pieces:

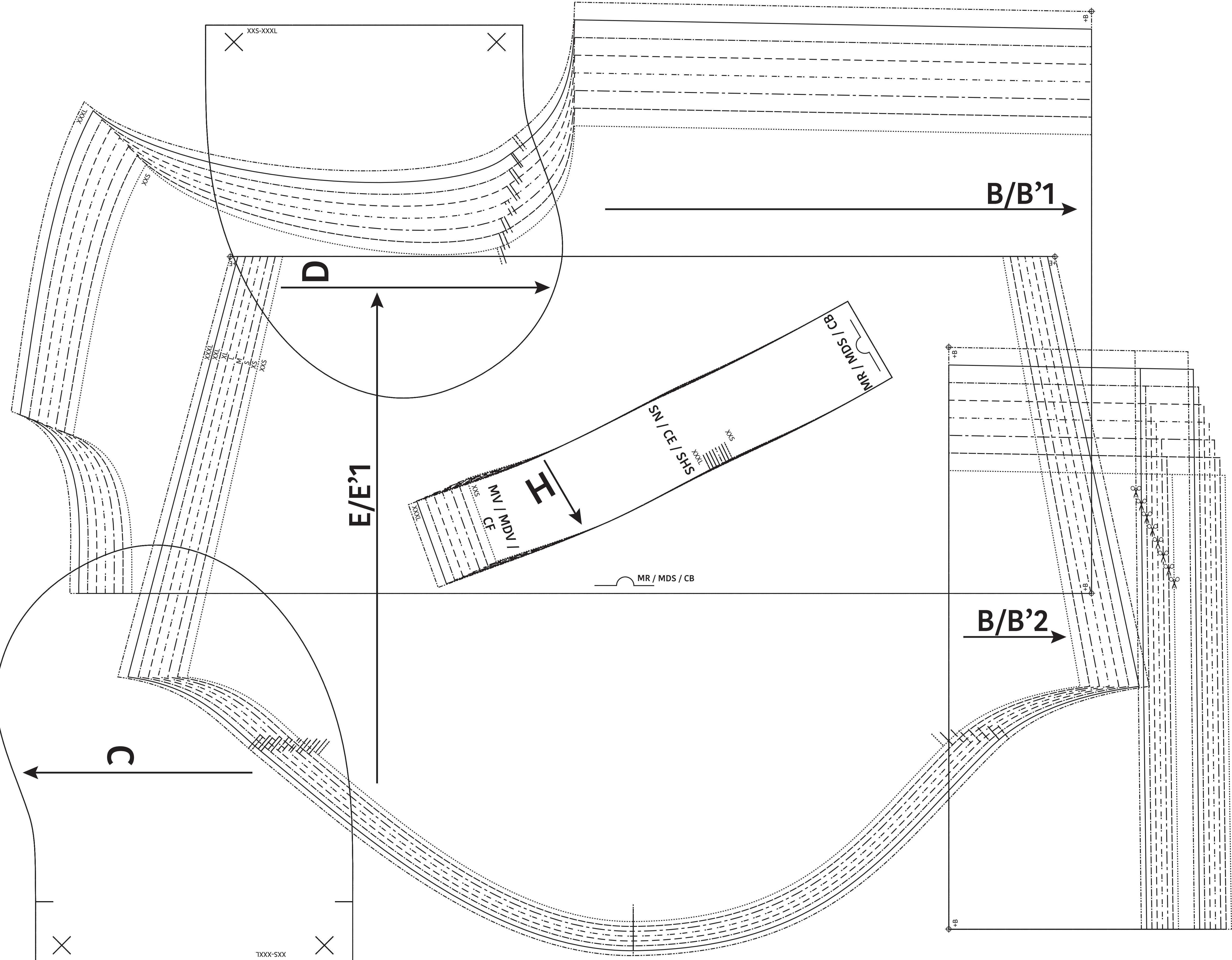
- A voorpand / devant / front panel
- A' voering VP / doublure DV / lining FP
- B rugpand / dos / back panel
- B' voering RP / doublure DS / lining BP
- C tegenzaak met bies / contre-poche à liseré / inner pocket bag with welt
- D inkijk zak / ouverture poche / pocket opening
- E mouw / manche / sleeve
- E' voering mouw / doublure manche / sleeve lining
- F kraag / col / collar
- G bies kraag / liseré col / collar trim
- H voering kraag / doublure col / collar lining

LET OP! De patroondelen bevinden zich op verschillende raderbladen.

ATTENTION! Les pièces du patron sont réparties sur plusieurs planches.

IMPORTANT! The pattern pieces are located on different pattern sheets.





Martin
 Jas / Veste / Jacket
 Zie RADERBLAD 1 / Voir PLANCHE 1 /
 See PATTERN SHEET 1