

# Viggo

## Trui / Pull / Sweatshirt

### Maten / Tailles / Sizes:

.....	92
-----	98
-----	104
- - - - -	110
- - - - -	116
- . - . -	122 / 128
—————	134 / 140
.....	146 / 152
.....	158 / 164
- - - - -	170 / 176

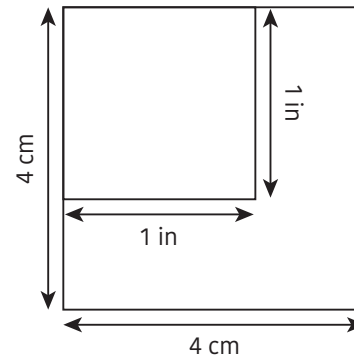
### Patroondelen / Pièces du patron / Pattern pieces:

- A** voorpand / devant / front panel
- B** rugpand / dos / back panel
- C** mouw / manche / sleeve
- D** zijstuk / partie côté / side insert
- E** onderarmstuk / partie dessous de manche / underarm piece
- F** halsboord / liseré d'encolure / collar
- G** zoomboord / liseré ourlet / hem
- H** mouwboord / bord manchette / cuff

## Patroonschema / Schéma du Patron / Pattern Diagram / Übersichtsplan zum Zusammenkleben

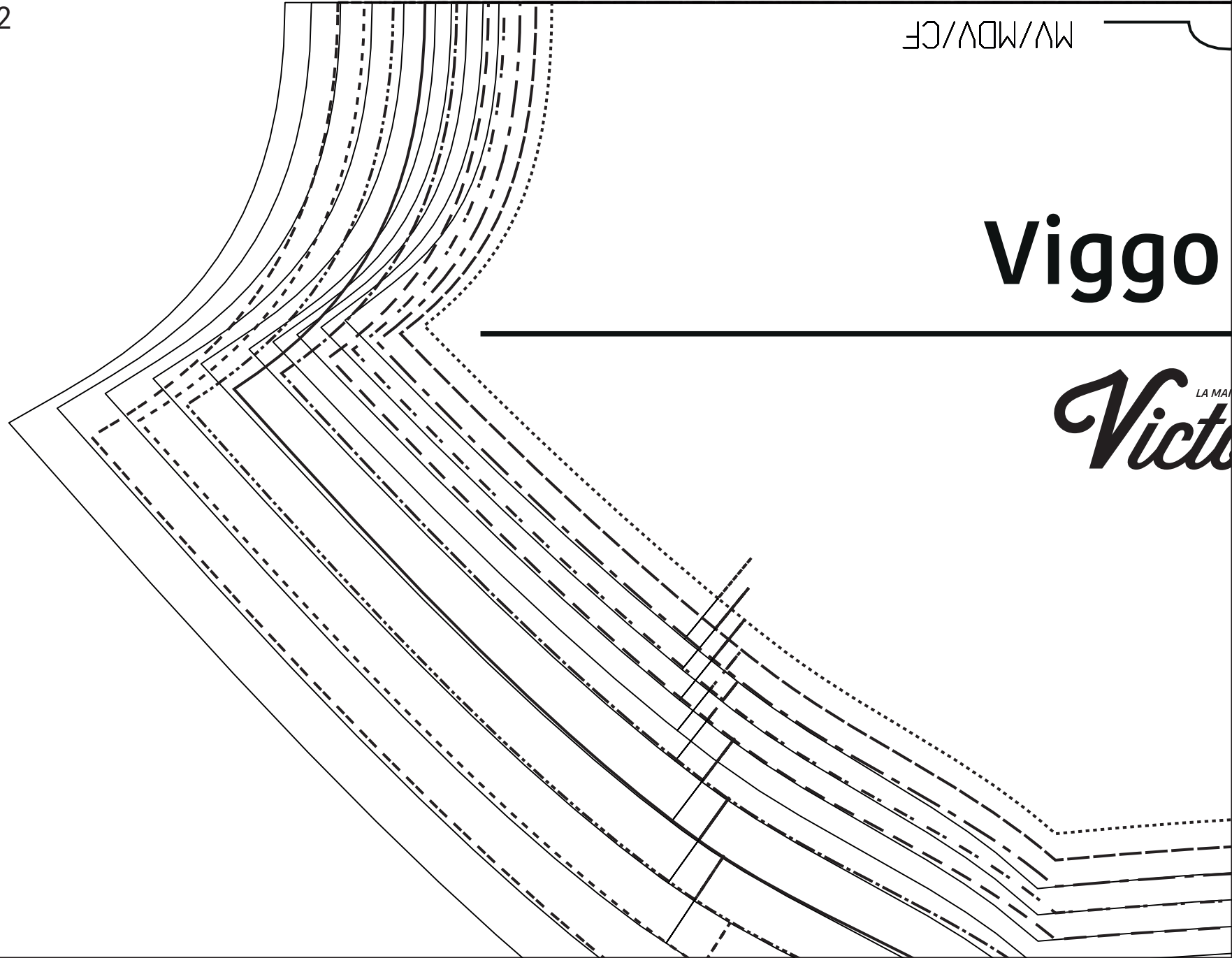
1	2	3	4	5	6
7	8	9	10	11	12
13	14	15	16	17	18
19	20				

### Controlevierkant / Carré de controle / Test square / Kontrollquadrat



**Viggo**

LA MAN  
*Victoria*



- A

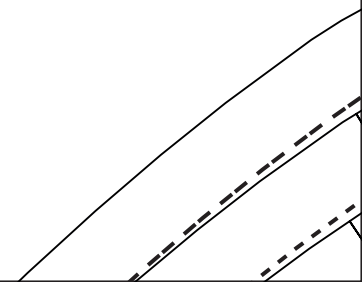


SON  
er

The right side of the page features a series of vertical lines for handwriting practice. From left to right, these include: a dotted vertical line, a solid vertical line, a dashed vertical line, another solid vertical line, another dashed vertical line, and a final solid vertical line. These lines are positioned on a background that has a slight curve at the bottom, suggesting a cursive writing style.

4

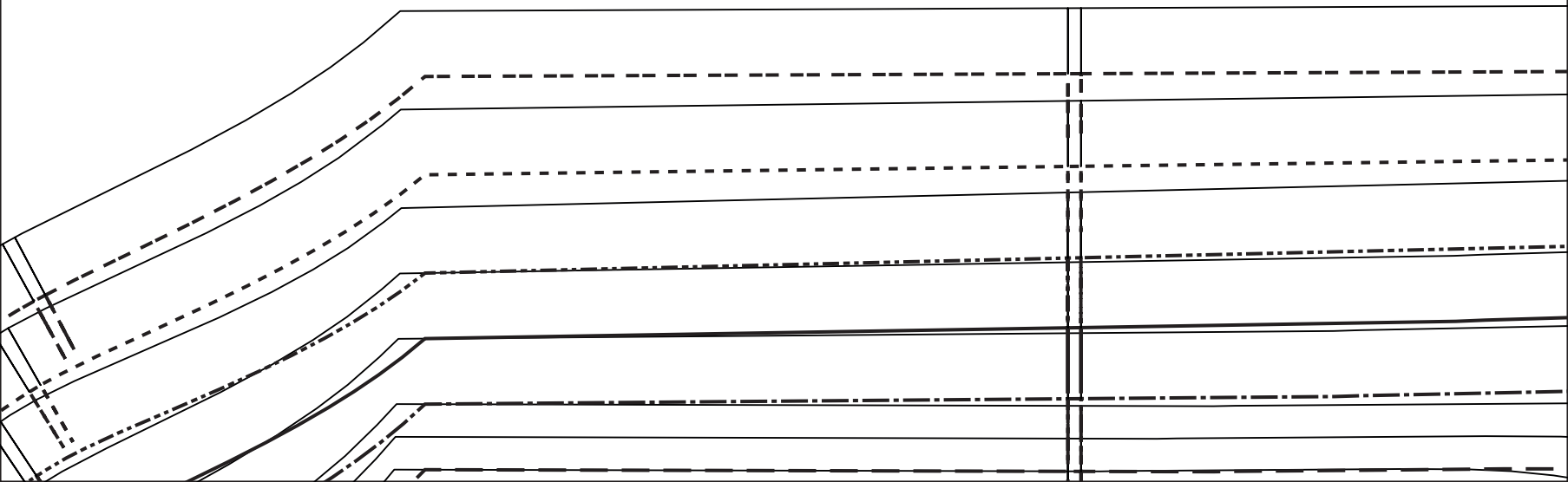
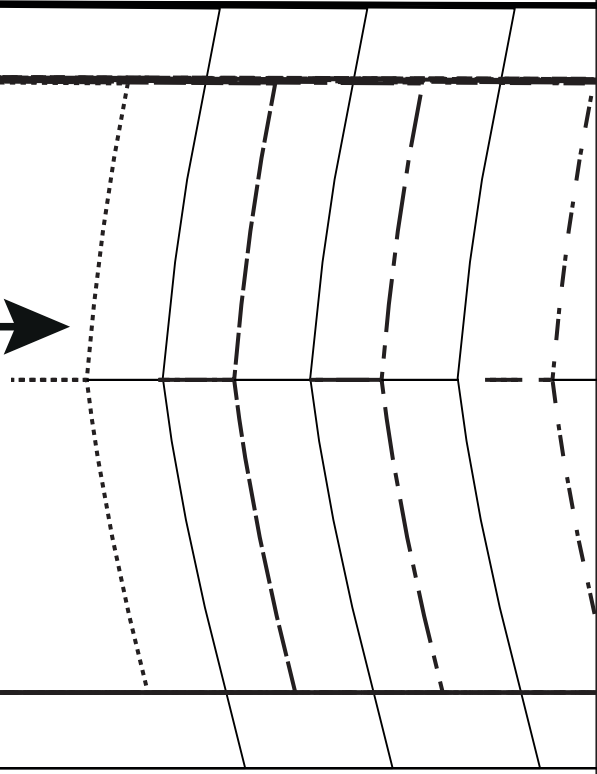
--	--	--	--	--	--	--	--	--	--



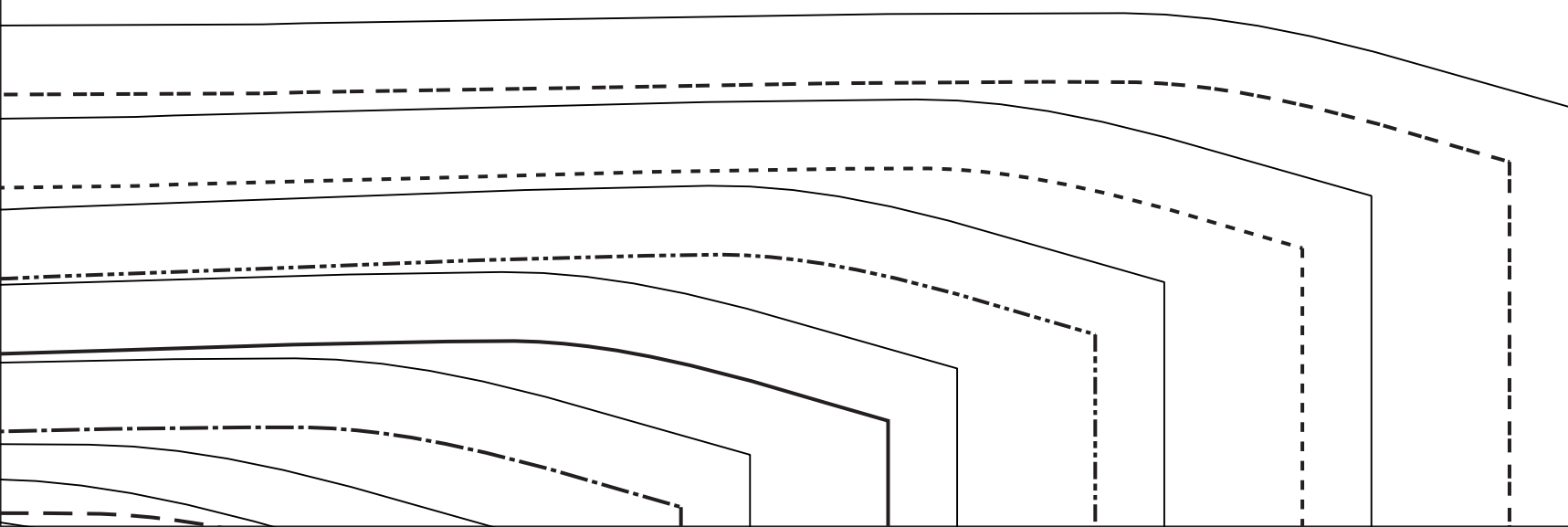
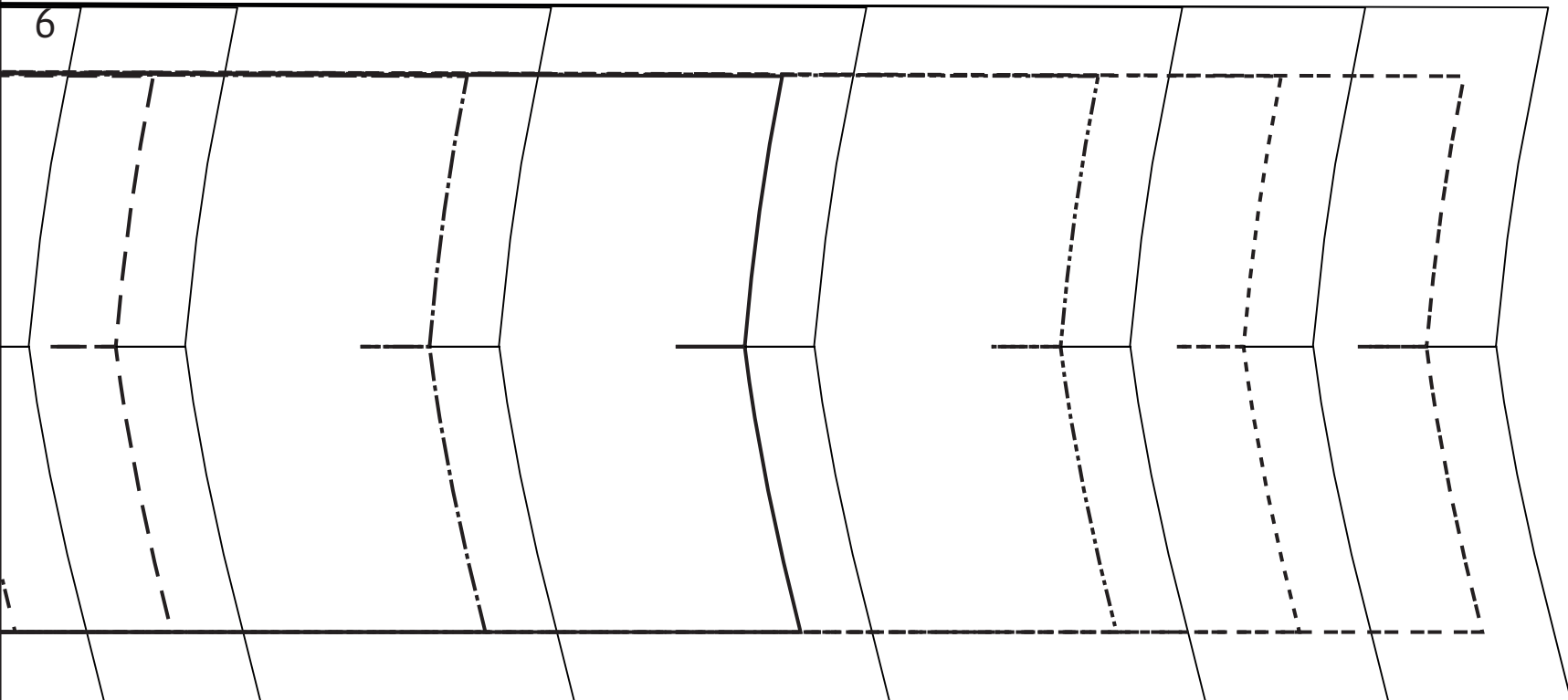
# Viggo - E

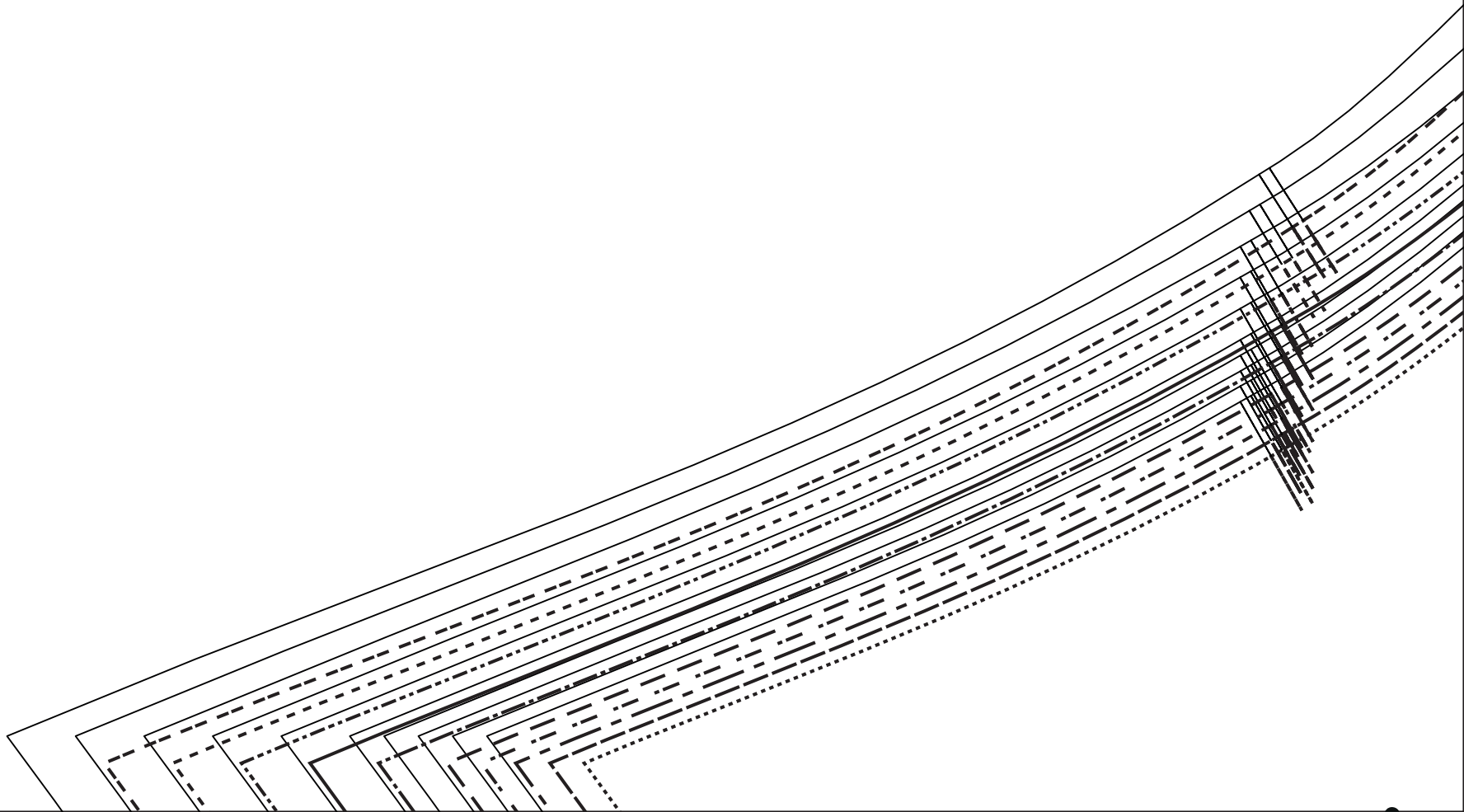


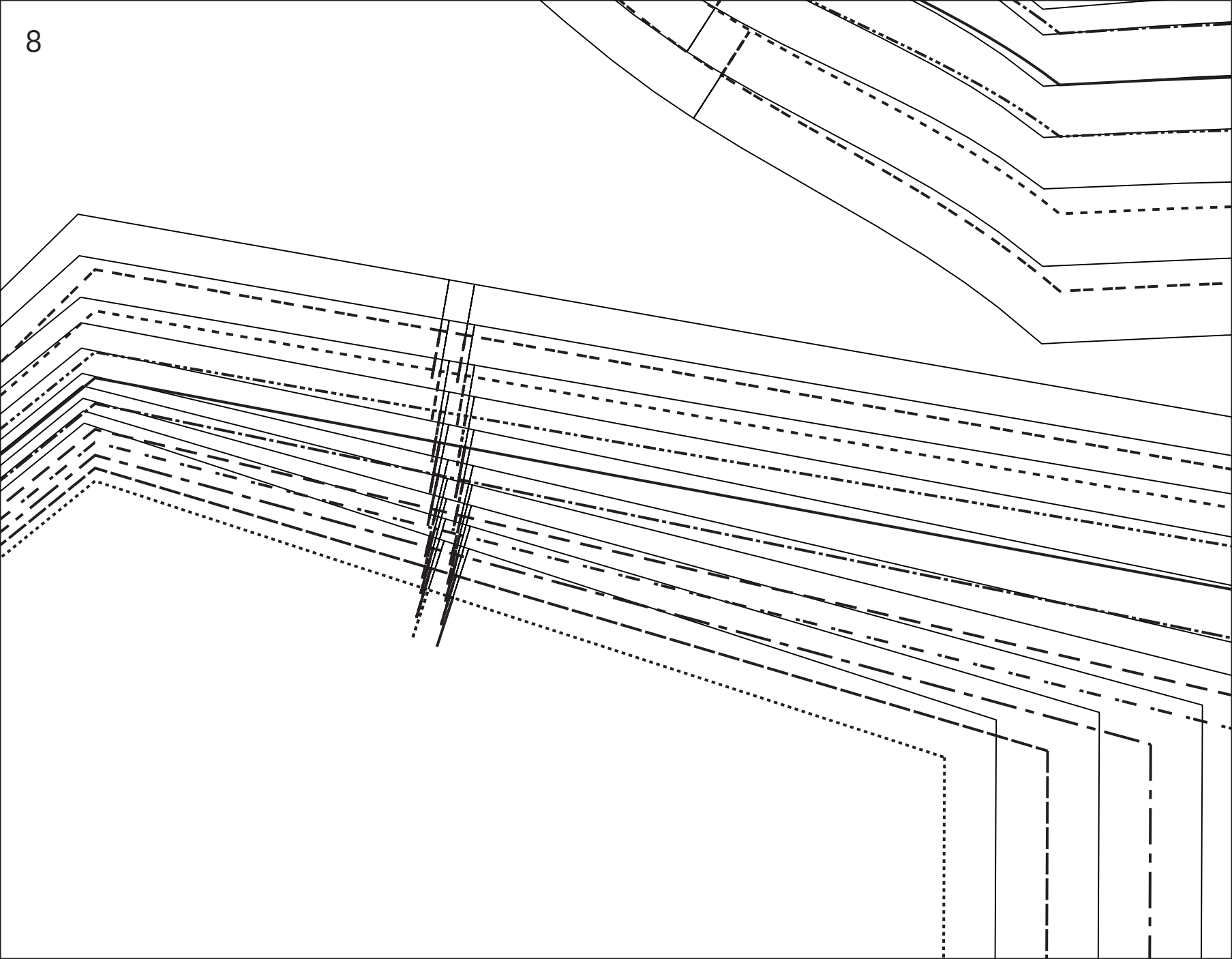
*Victor* LA MAISON



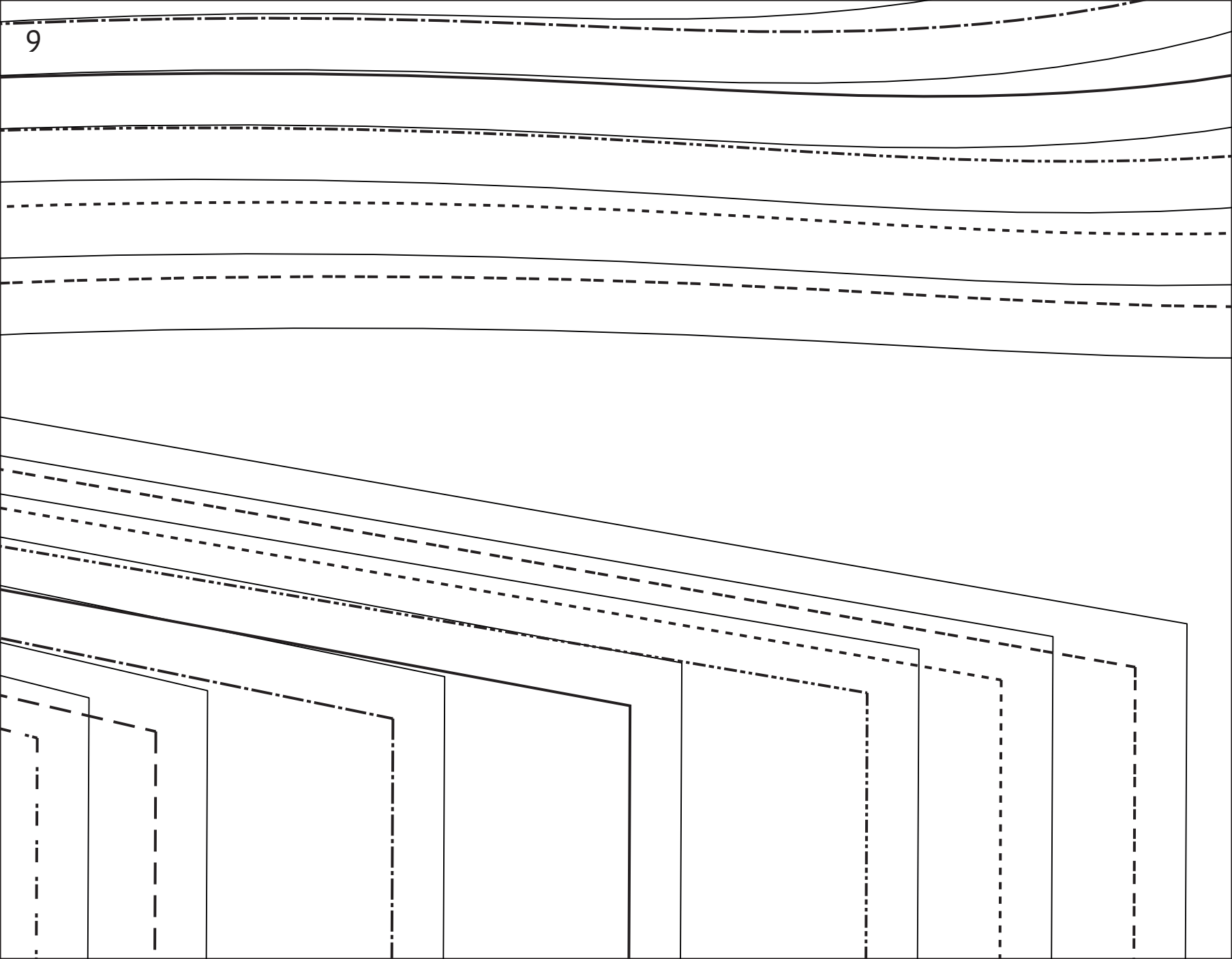
6



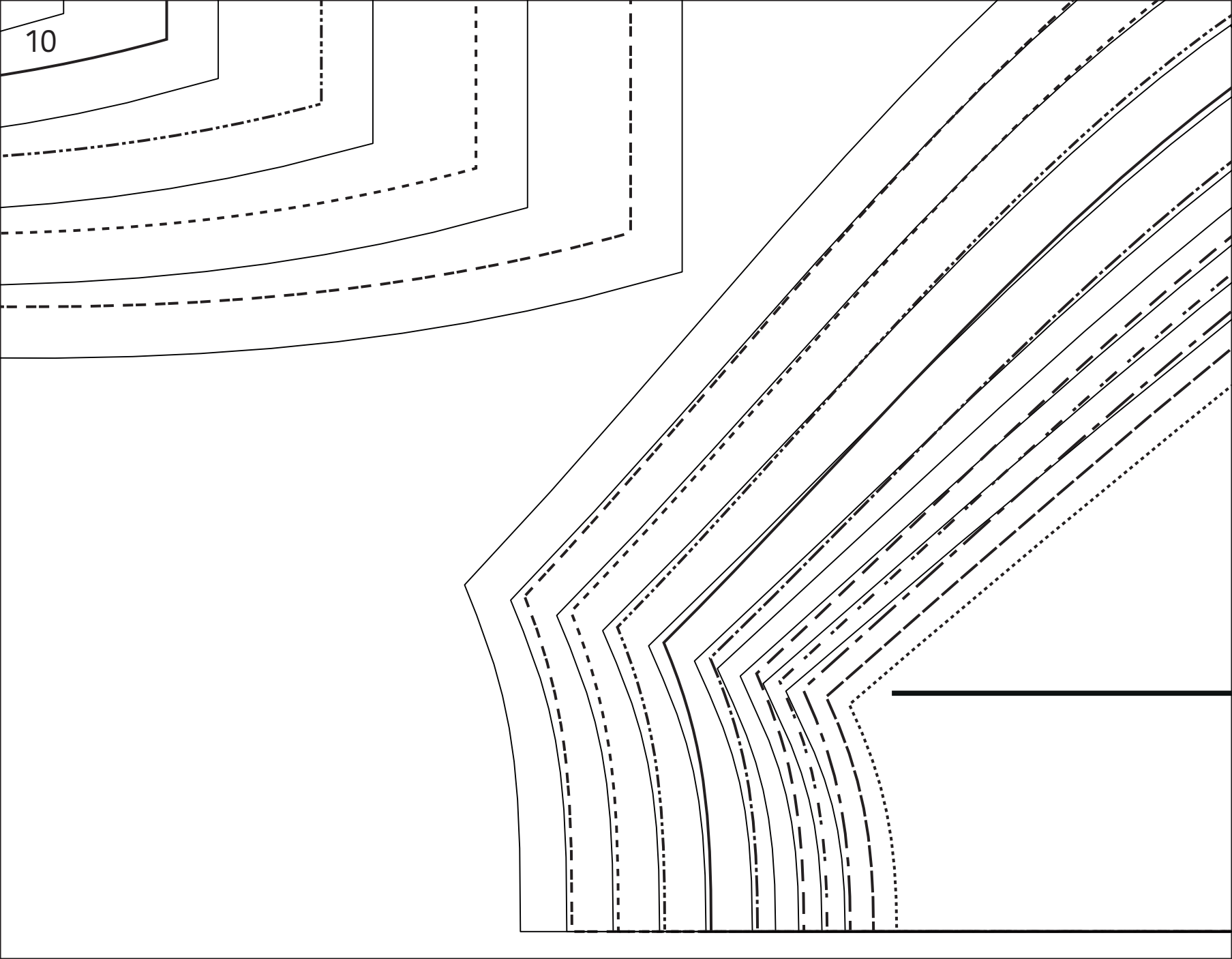








10





# Viggo - B

LA MAISON  
*Victor*

MR/MDS/CB





