

# Maru

Sweater / Sweat / Jumper

Maten / Tailles / Sizes:

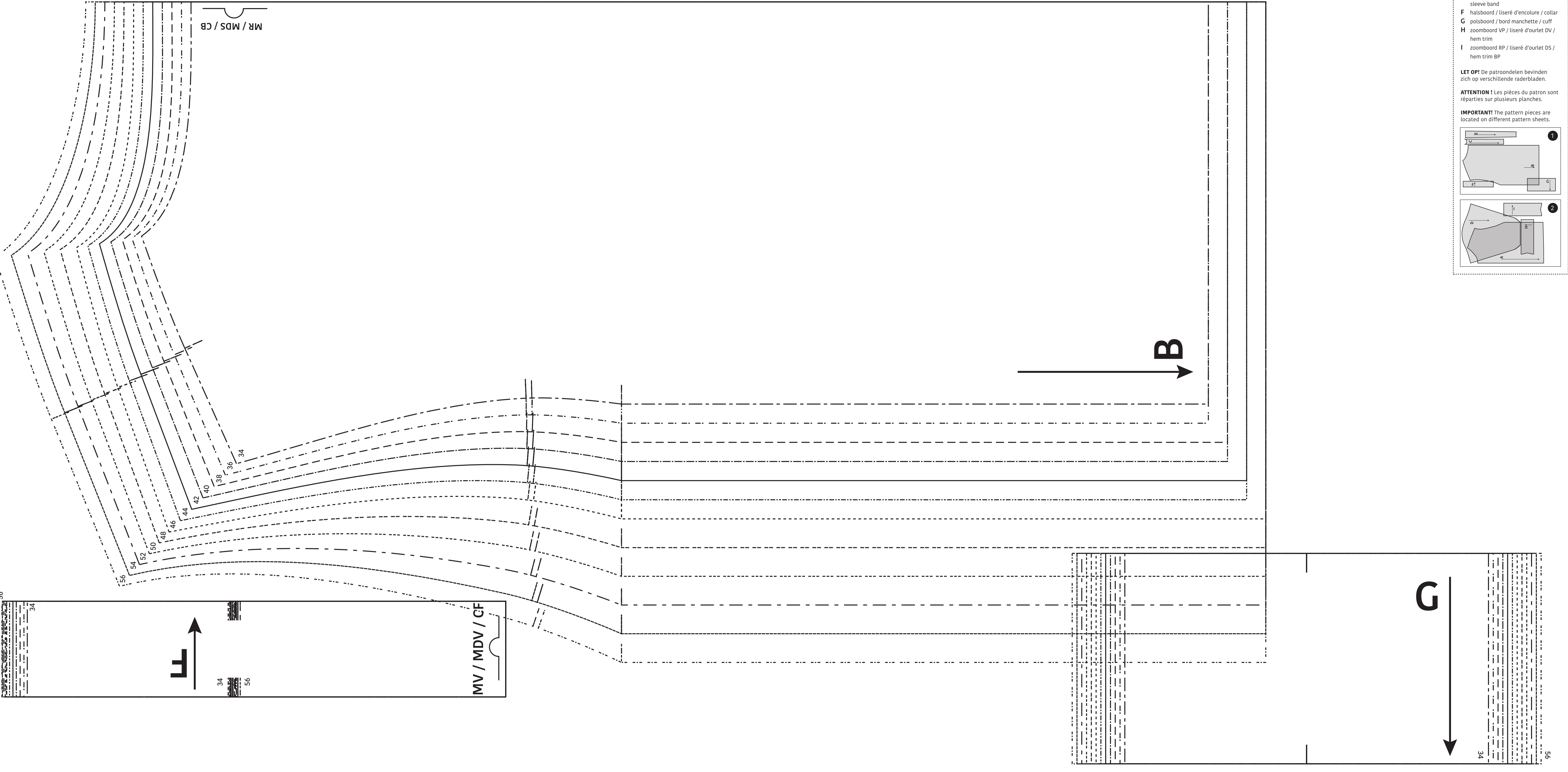
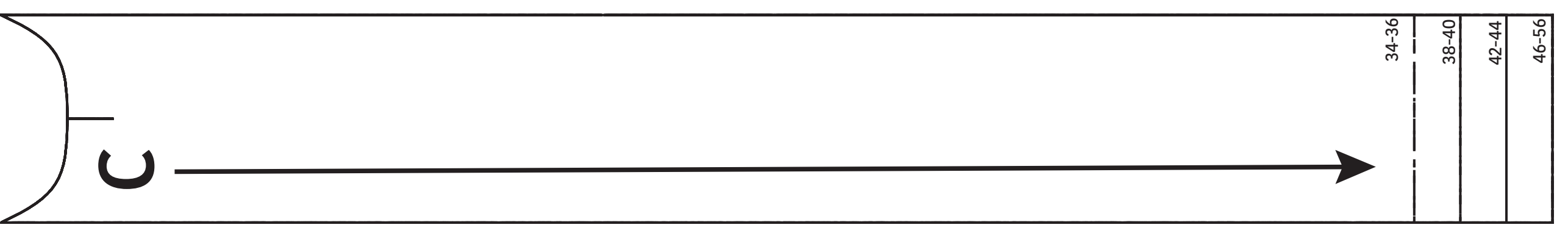
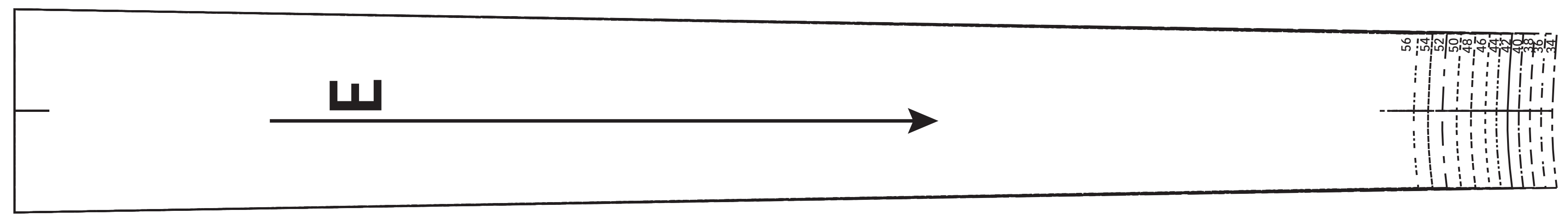
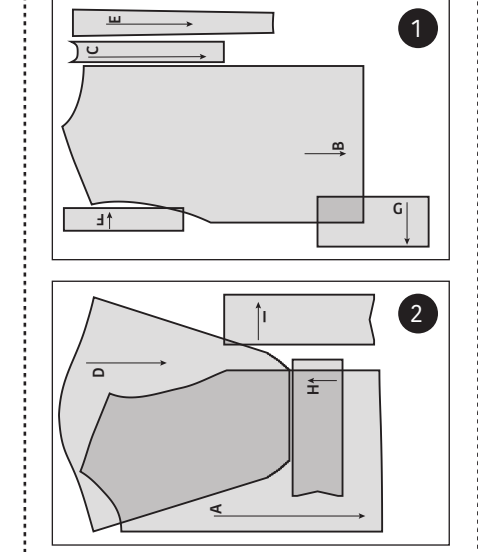
---	34
---	36
---	38
---	40
---	42
---	44
---	46
---	48
---	50
---	52
---	54
---	56

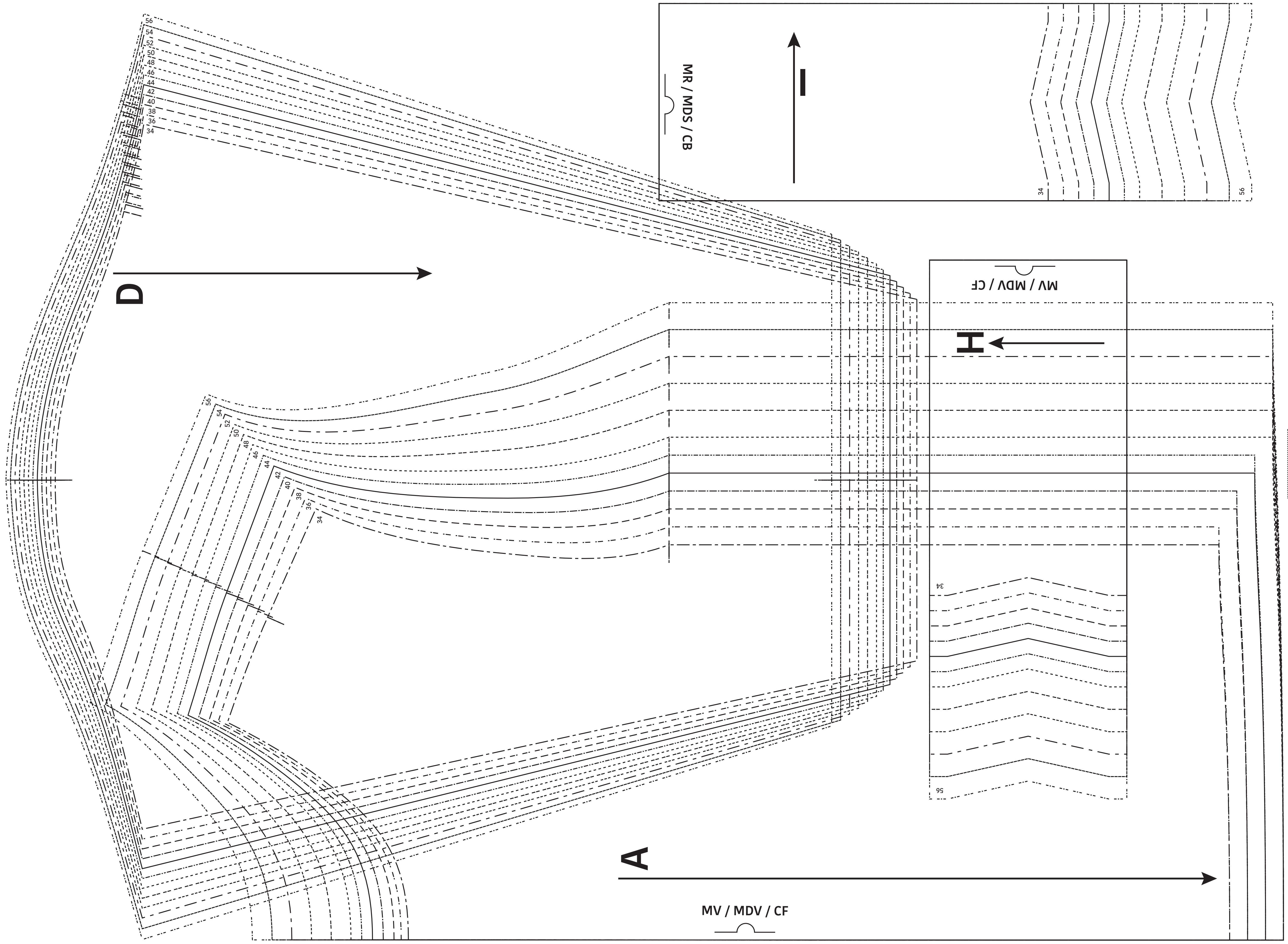
- Patroondelen / Pièces du patron / Pattern pieces:
- A voorpand / devant / front panel
  - B rugpand / dos / back panel
  - C zijpand / côté / side
  - D mouw / manche / sleeve
  - E mouwstrook / bande manche / sleeve band
  - F halsboord / liseré d'encolure / collar
  - G polsboord / bord manchette / cuff
  - H zoomboord VP / liseré d'ourlet DV / hem trim
  - I zoomboord RP / liseré d'ourlet DS / hem trim BP

**LET OP!** De patroondelen bevinden zich op verschillende raderbladen.

**ATTENTION!** Les pièces du patron sont réparties sur plusieurs planches.

**IMPORTANT!** The pattern pieces are located on different pattern sheets.





**Maru**  
 Sweater / Sweat /  
 Jumper  
 Zie RADERBLAD 1 / Voir PLANCHE 1 /  
 See PATTERN SHEET 1