

Mallo Broek / Pantalon / Trousers

Maten / Tailles / Sizes:

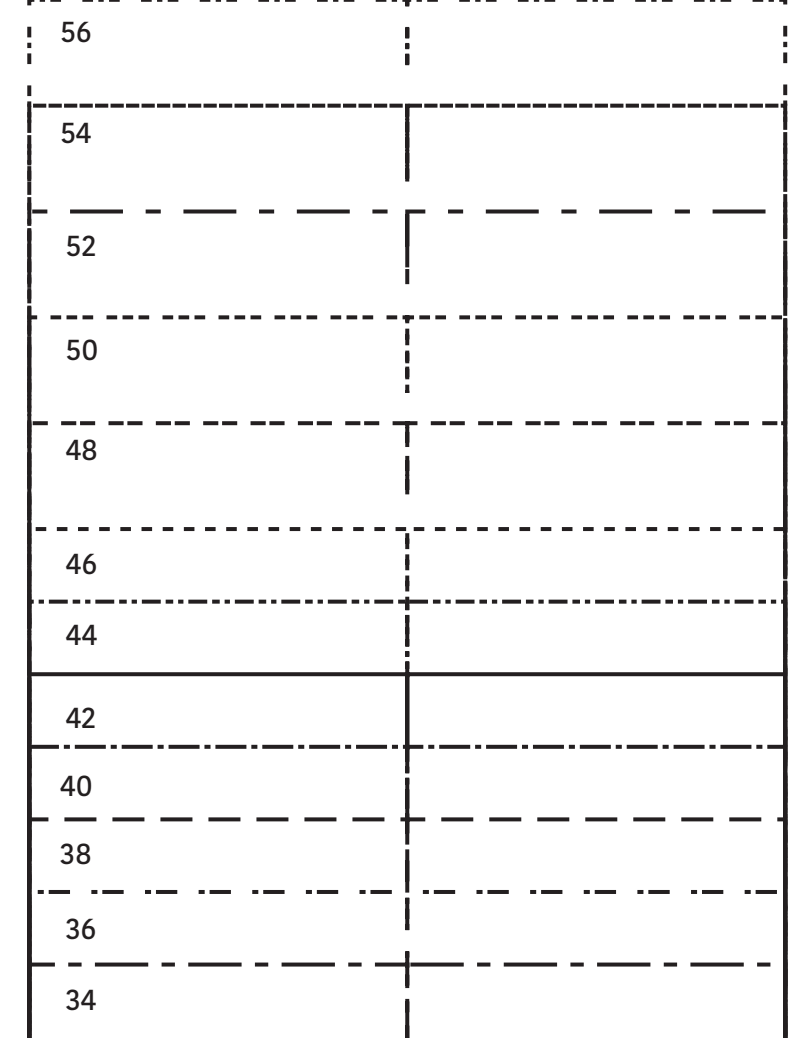
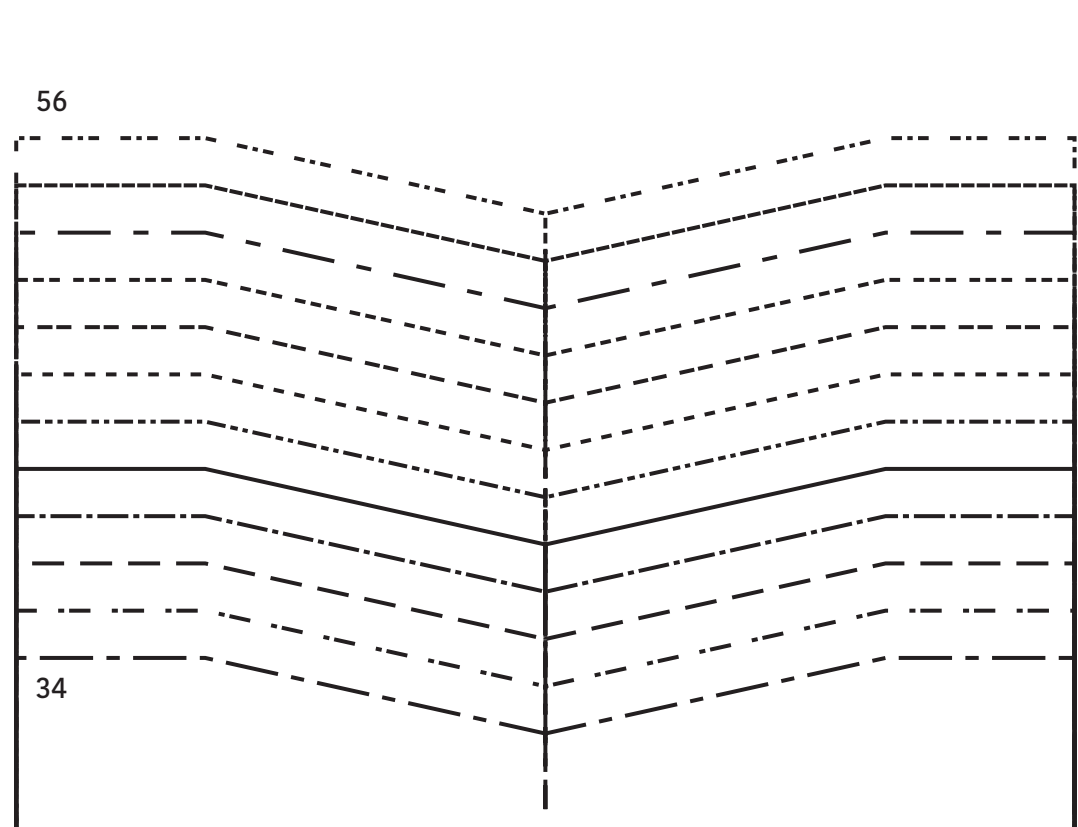
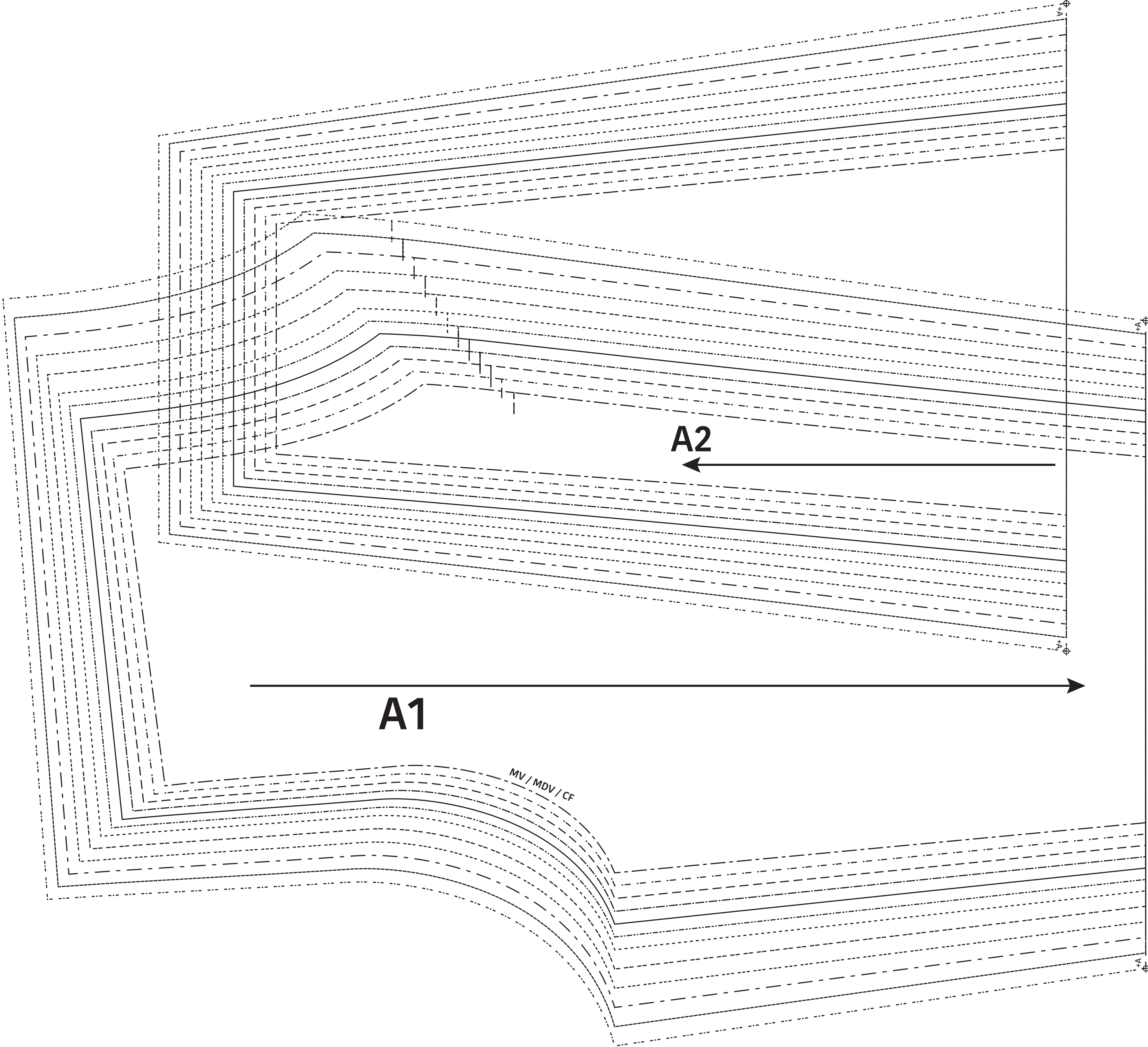
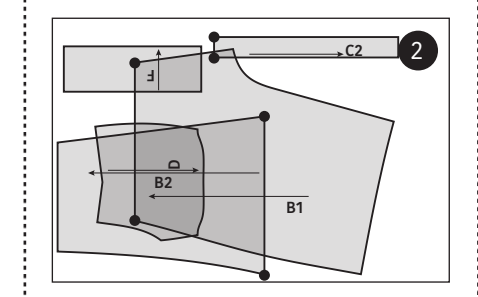
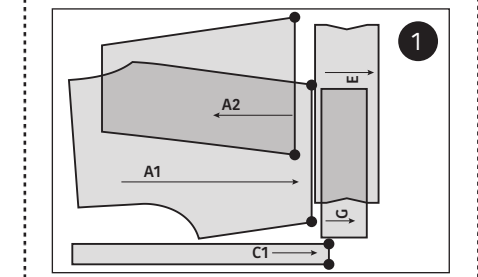
---	34
---	36
---	38
---	40
---	42
---	44
---	46
---	48
---	50
---	52
---	54
---	56

- Patroondelen / Pièces du patron / Pattern pieces:
- A voorpand / devant / front panel
 - B rugpand / dos / back panel
 - C zijstrook / bande de côté / side band
 - D zak / poche / pocket
 - E zoomboord / liseré d'ourlet / cuff
 - F tailleboord VP / ceinture DV / waistband FP
 - G tailleboord RP / ceinture DS / waistband BP

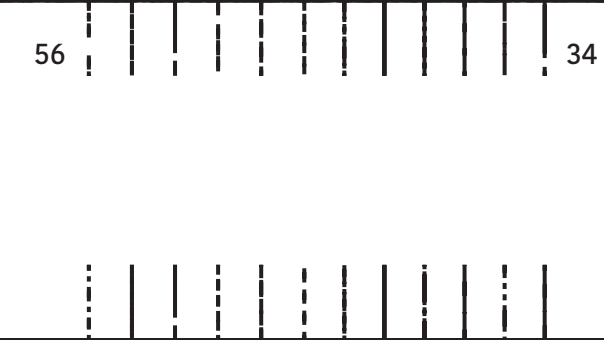
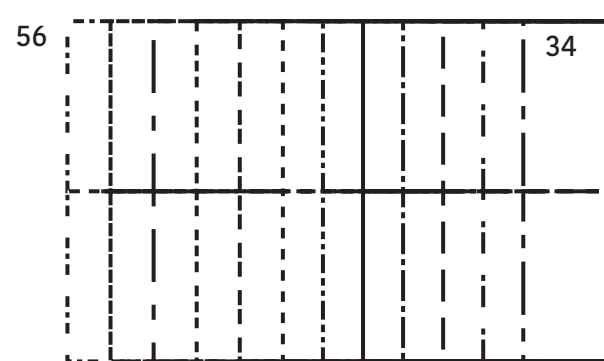
LET OP! De patroondelen bevinden zich op verschillende raderbladen.

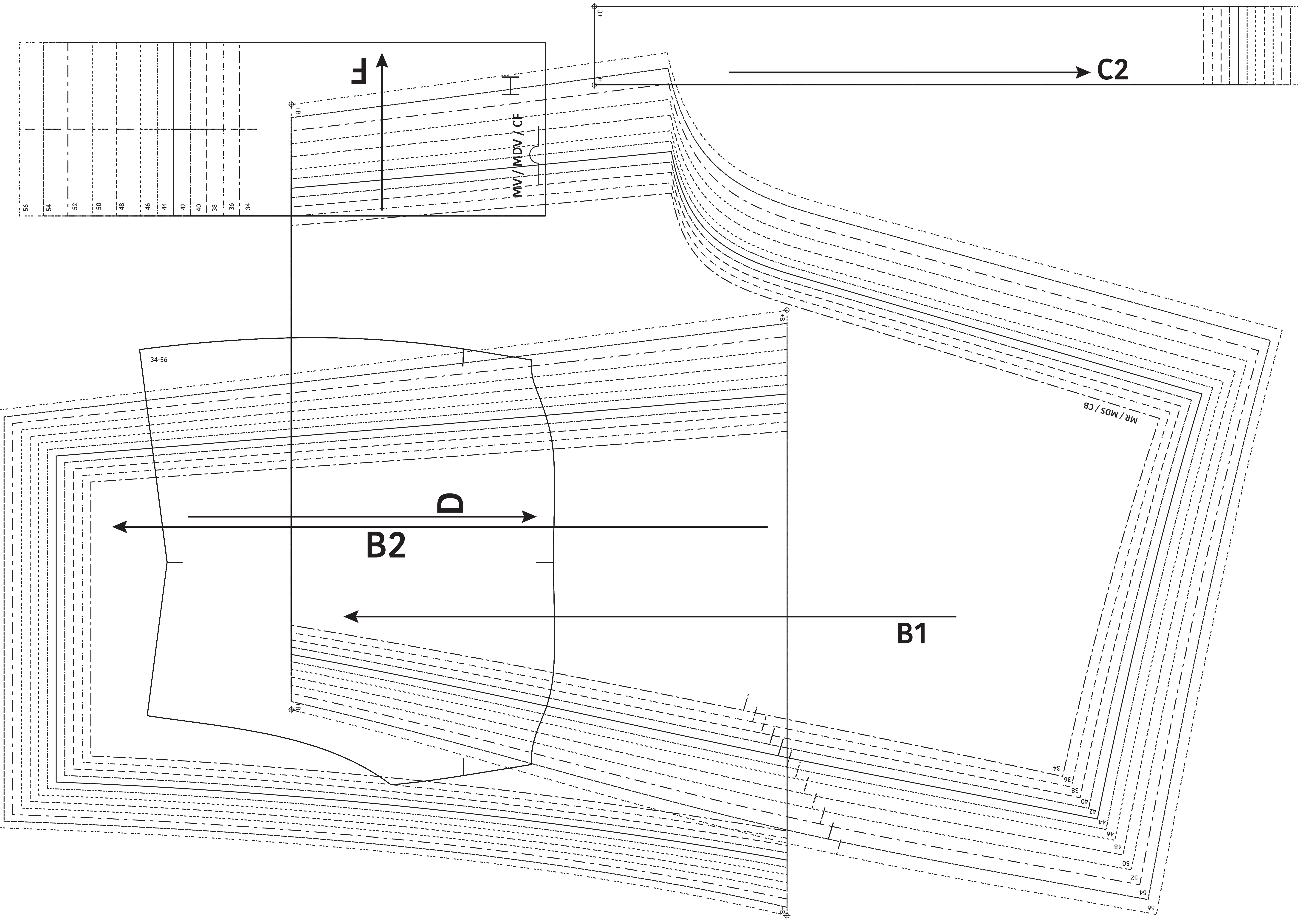
ATTENTION! Les pièces du patron sont réparties sur plusieurs planches.

IMPORTANT! The pattern pieces are located on different pattern sheets.



MR / MDS / CB





Mallo
 Broek / Pantalon /
 Trousers
 Zie RADERBLAD 1 / Voir PLANCHE 1 /
 See PATTERN SHEET 1