

Zindra

Jurk / Robe / Dress

Maten / Tailles / Sizes:

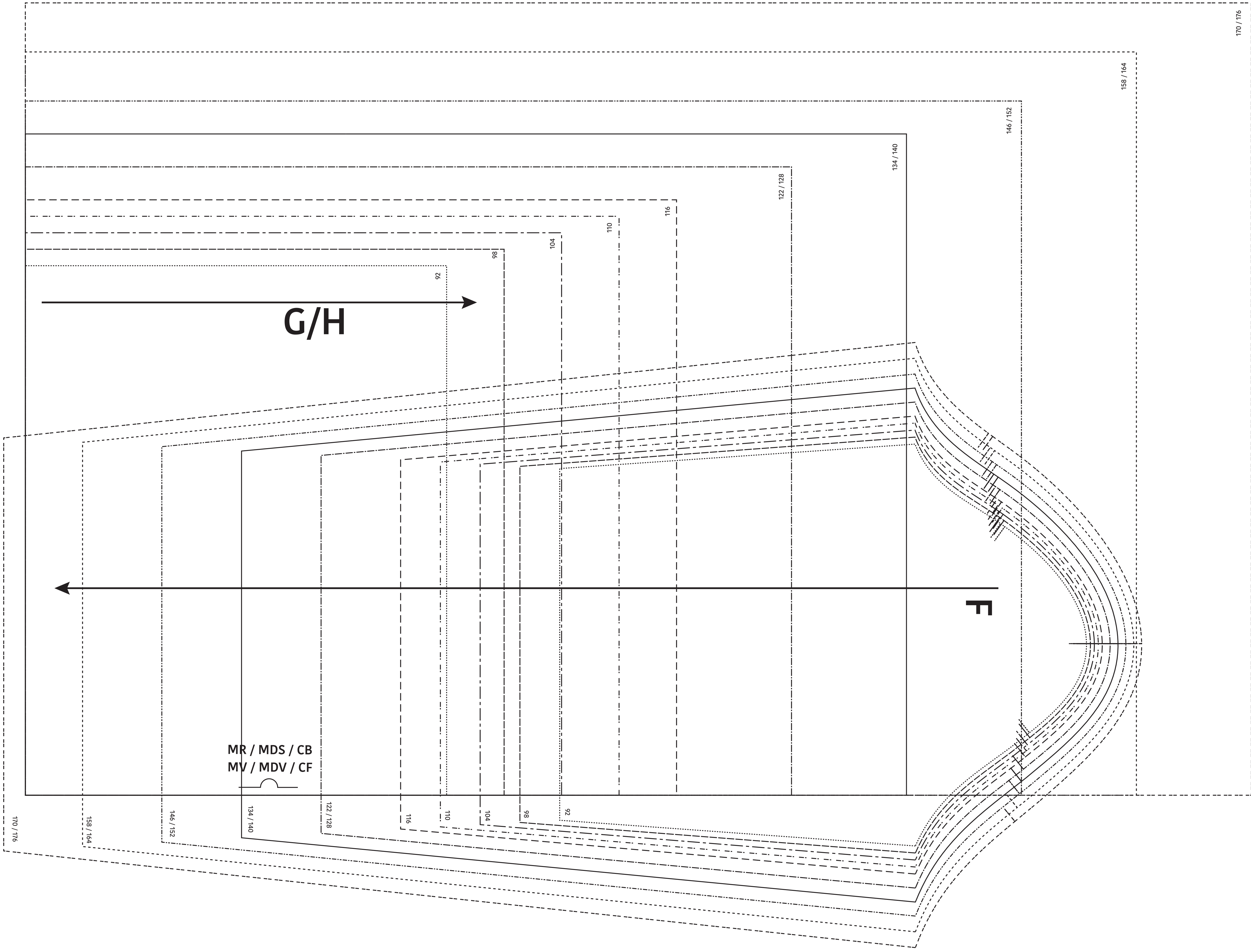
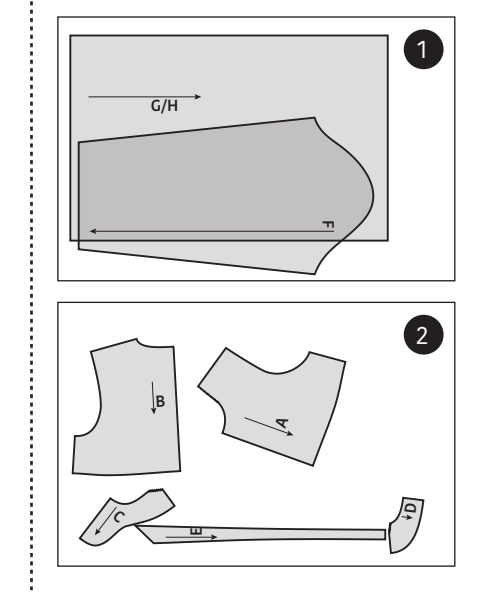
.....	92
-----	98
-----	104
-----	110
-----	116
-----	122 / 128
-----	134 / 140
-----	146 / 152
-----	158 / 164
-----	170 / 176

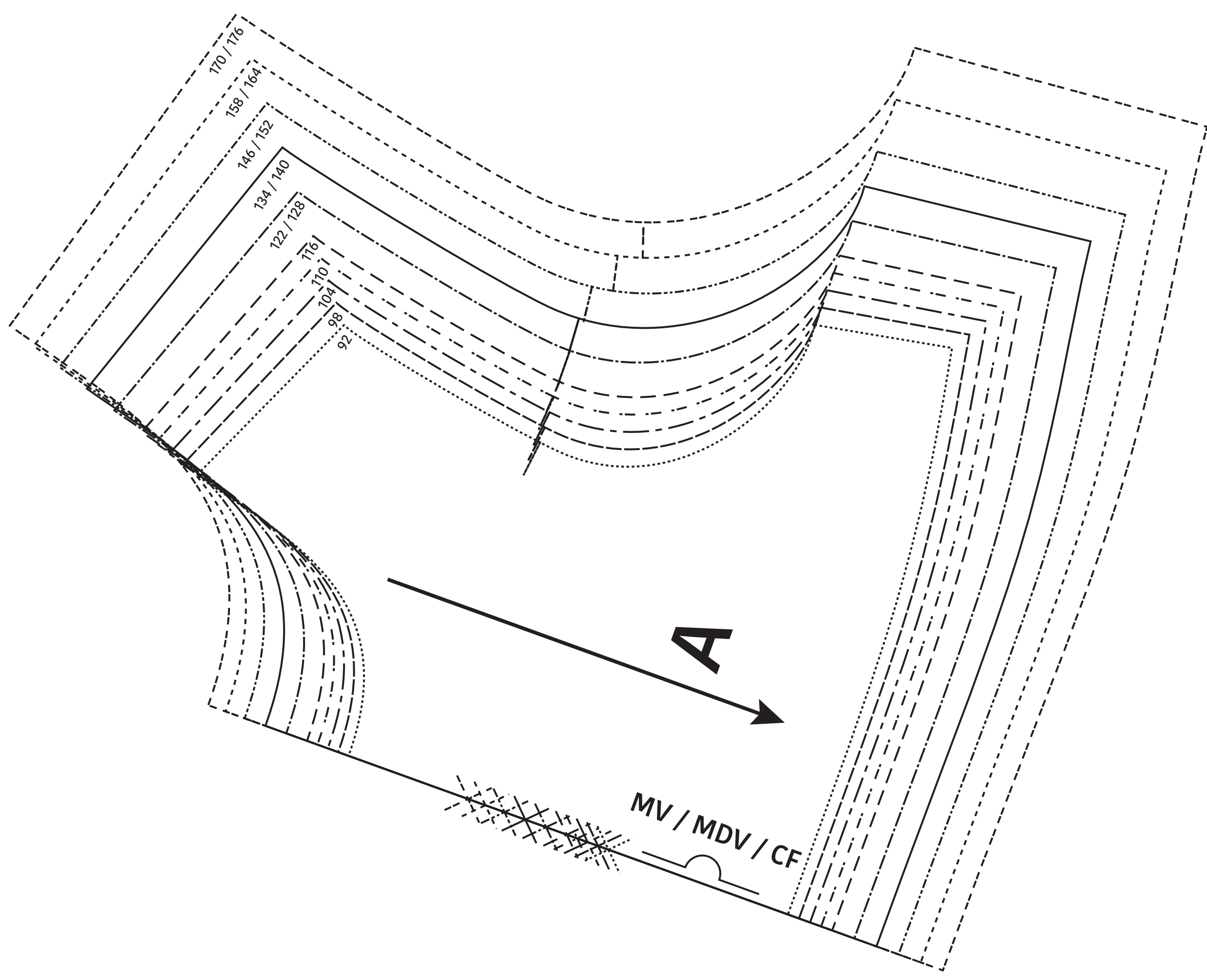
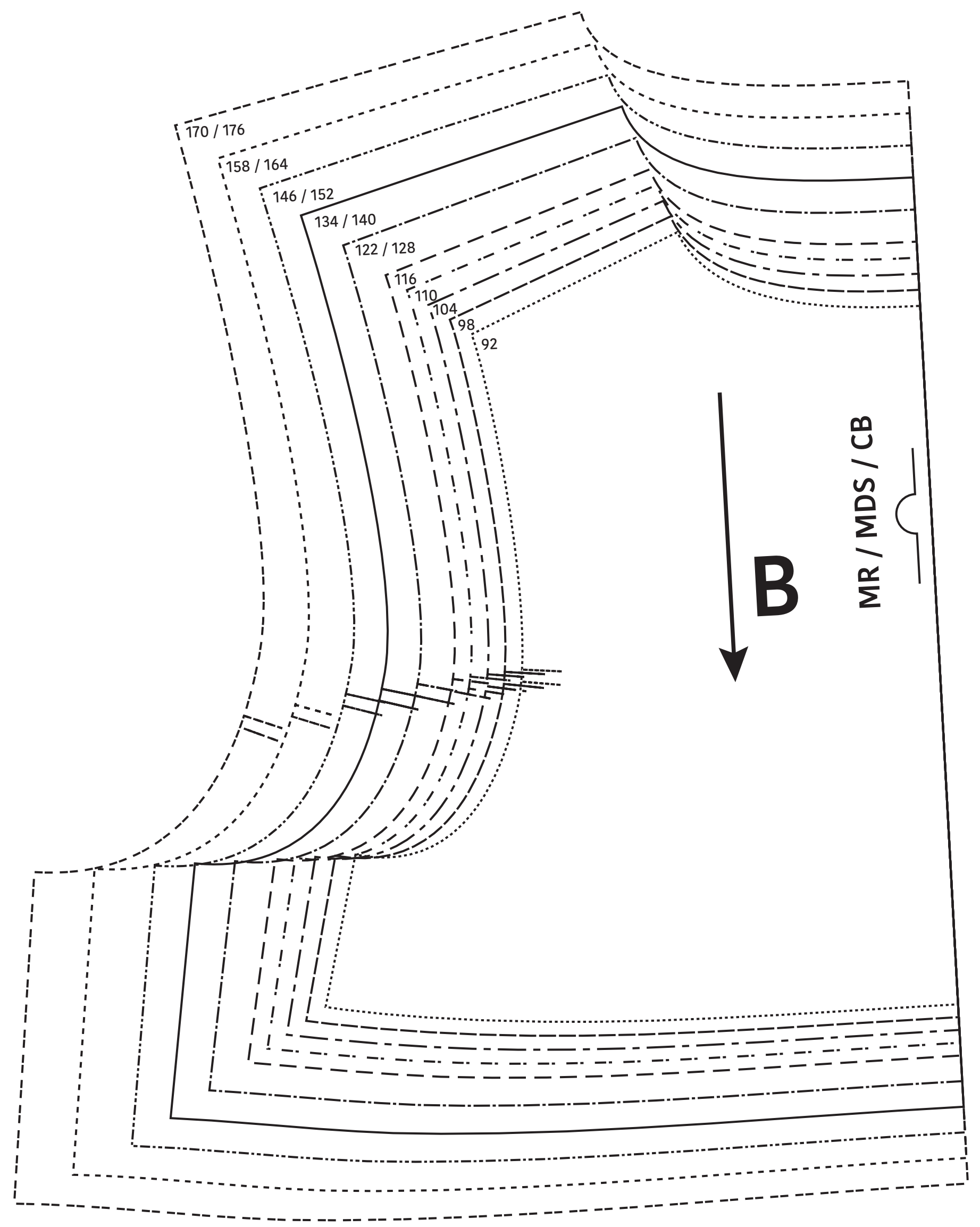
- Patroondelen / Pièces du patron / Pattern pieces:
- A** voorpand boven / haut DV / front top
 - B** rugpand boven / haut DS / back top
 - C** beleg VP / parementure DV / front facing
 - D** beleg RP / parementure DS / back facing
 - E** strikint / ruban à nouer / bow
 - F** mouw / manche / sleeve
 - G/H** voor-/rugpand onder / bas DV/DS / bottom of front/back

LET OP! De patroondelen bevinden zich op verschillende raderbladen.

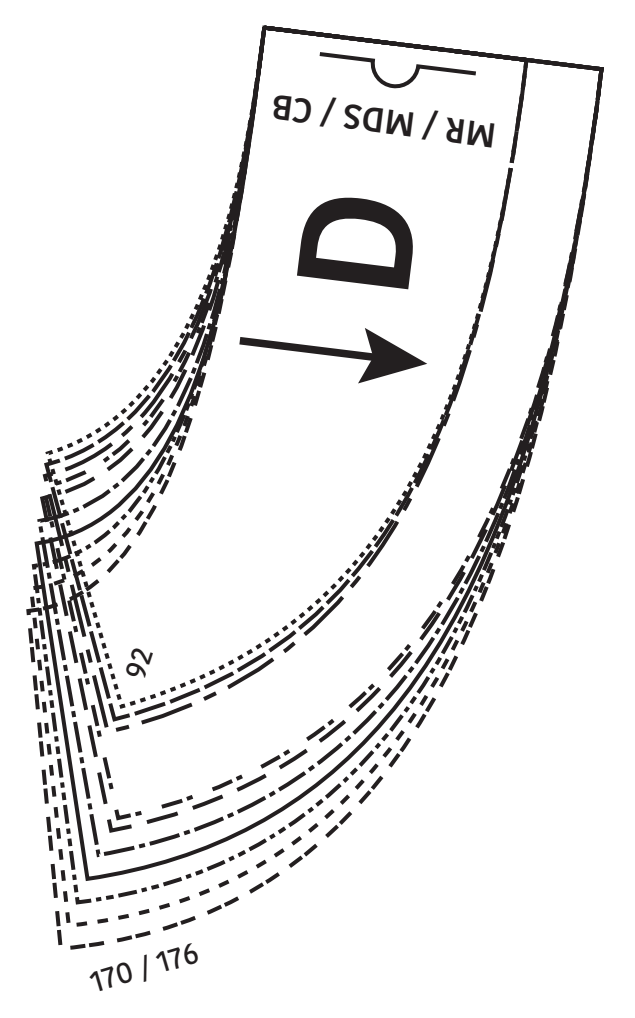
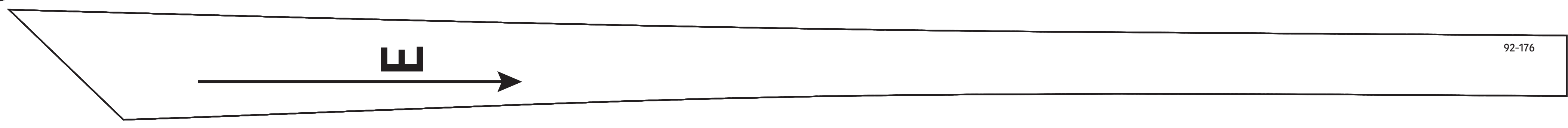
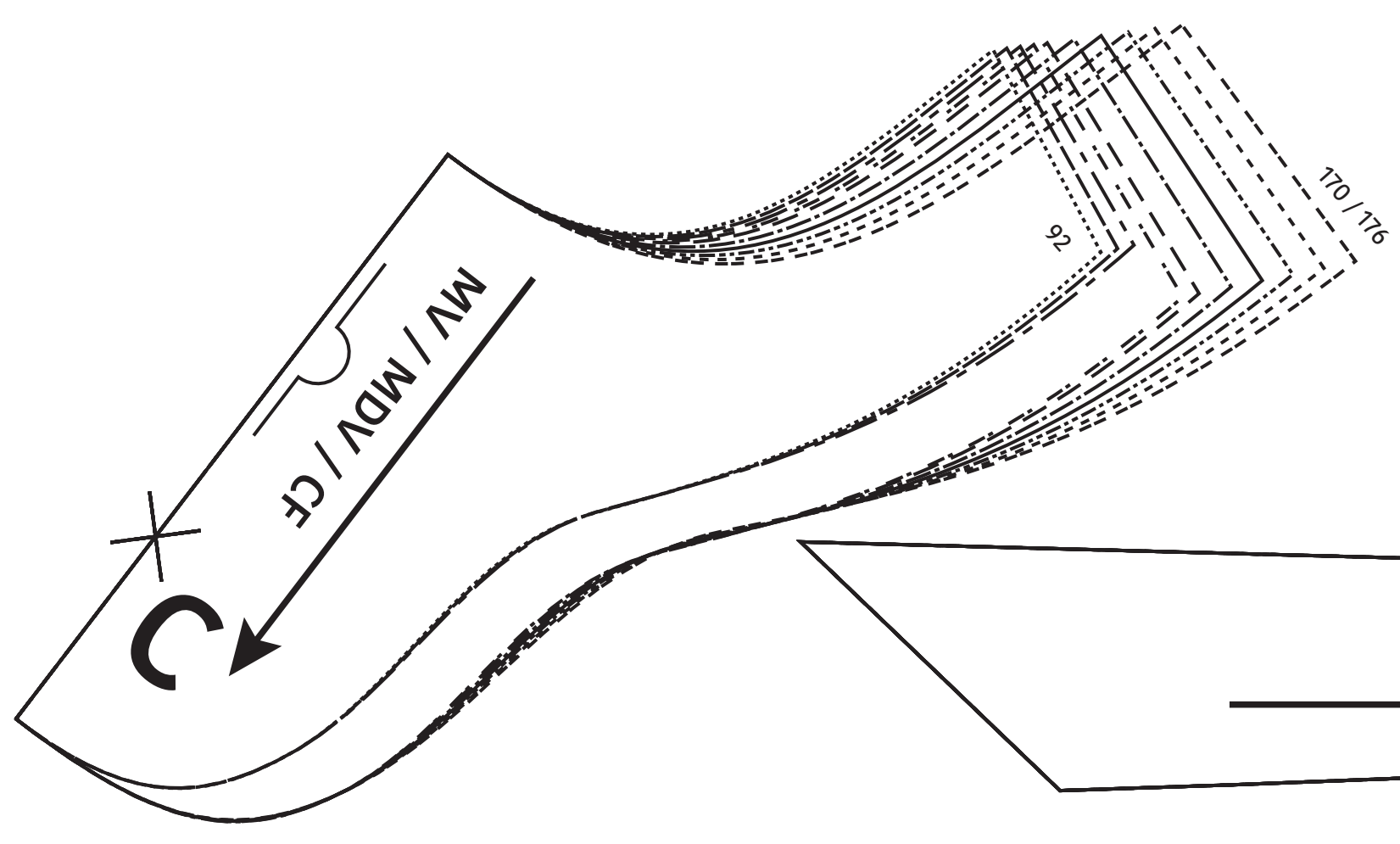
ATTENTION! Les pièces du patron sont réparties sur plusieurs planches.

IMPORTANT! The pattern pieces are located on different pattern sheets.





Zindra
 Jurk / Robe / Dress
 Zie RADERBLAD 1 / Voir PLANCHE 1 /
 See PATTERN SHEET 1



92-176