

Cis

Trui / Pull / Jumper

Maten / Tailles / Sizes:

.....	92
-----	98
-----	104
- . - . - . - . - . - . - . - . - .	110
-----	116
- . - . - . - . - . - . - . - . - .	122 / 128
-----	134 / 140
- . - . - . - . - . - . - . - . - .	146 / 152
-----	158 / 164
- . - . - . - . - . - . - . - . - .	170 / 176

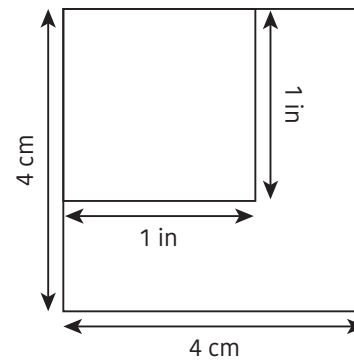
Patroondelen / Pièces du patron / Pattern pieces:

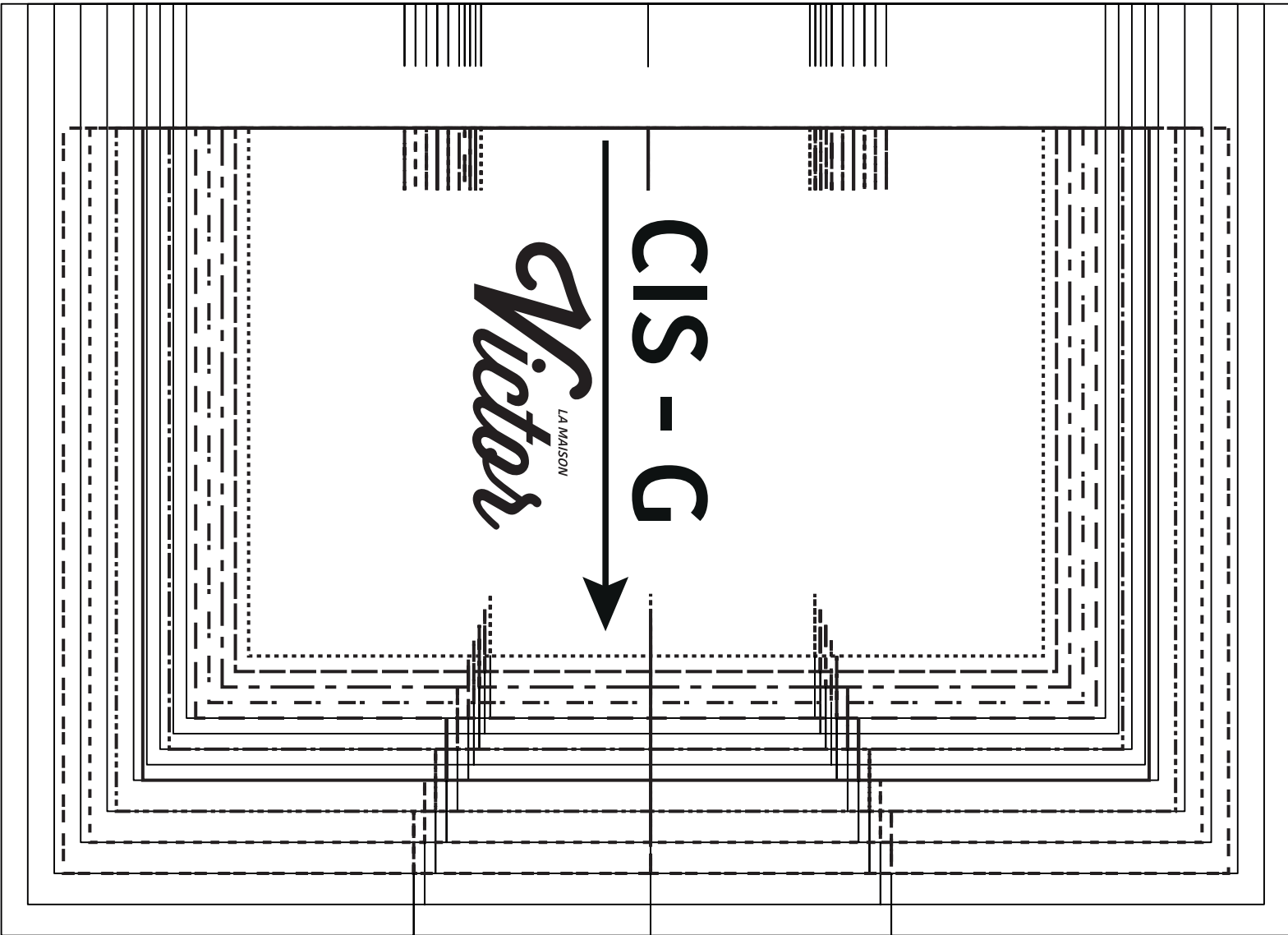
- A** voorpand / devant / front panel
- B** rugpand / dos / back panel
- C** halsboord / liseré de l'encolure / collar
- D** mouw / manche / sleeve
- E** mouwboord / bord manchette / sleeve trim
- F** zoomboord / liseré ourlet / hem trim
- G** zak / poche / pocket

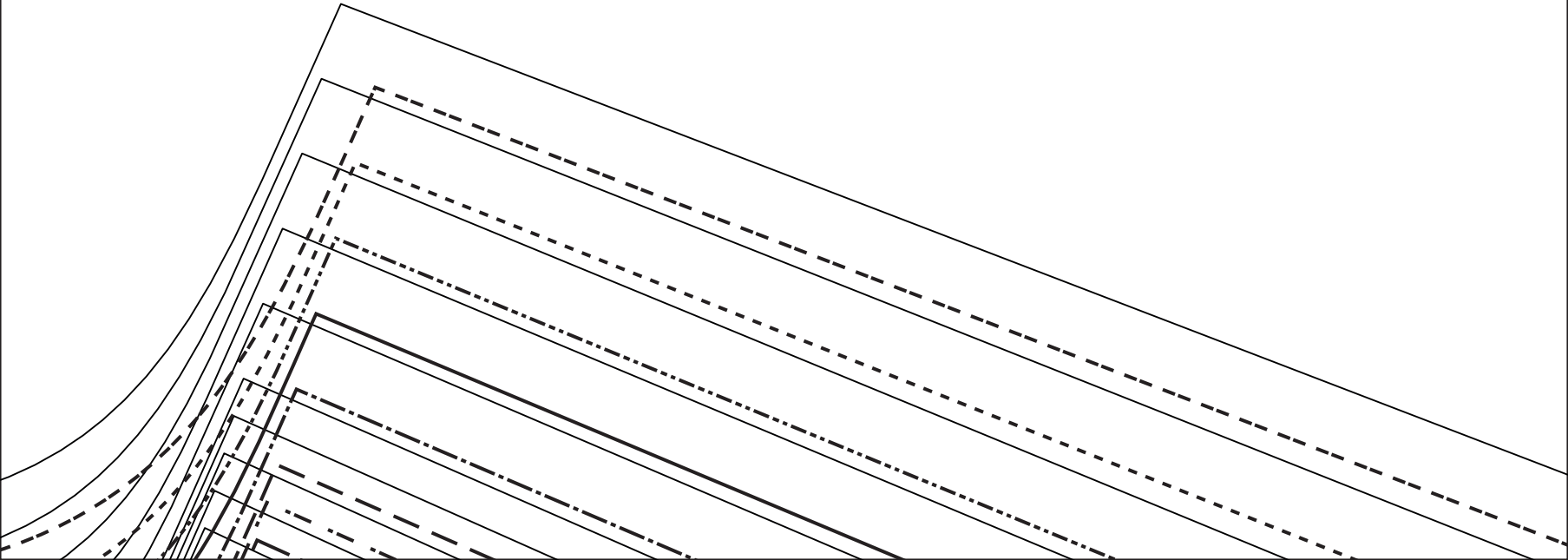
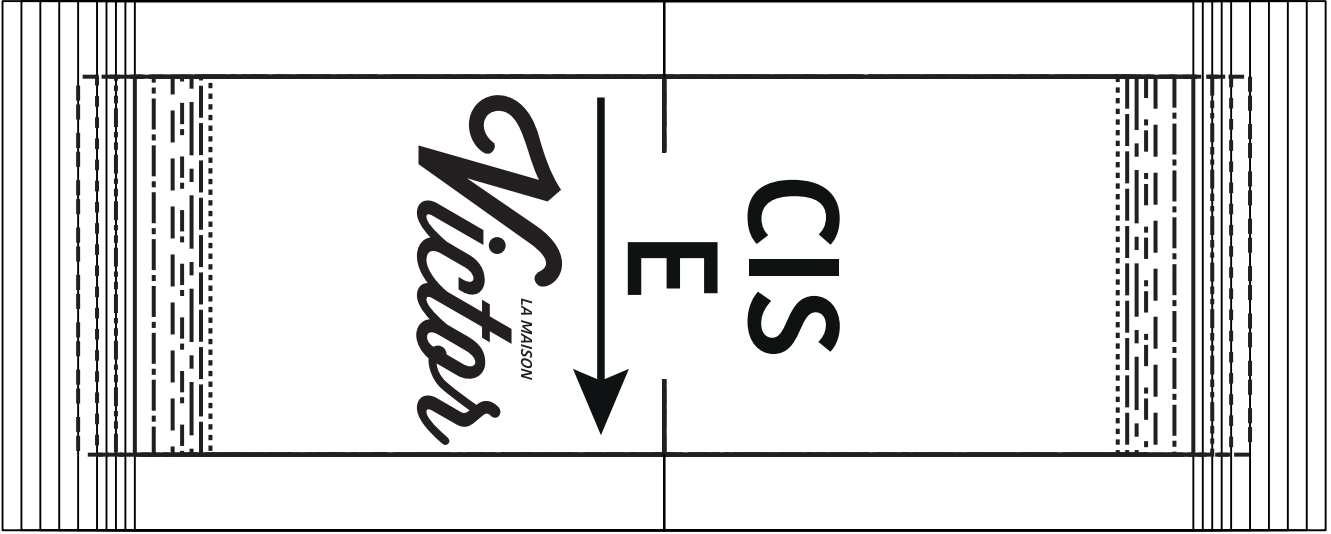
Patroonschema / Schéma du Patron / Pattern Diagram / Übersichtsplan zum Zusammenkleben

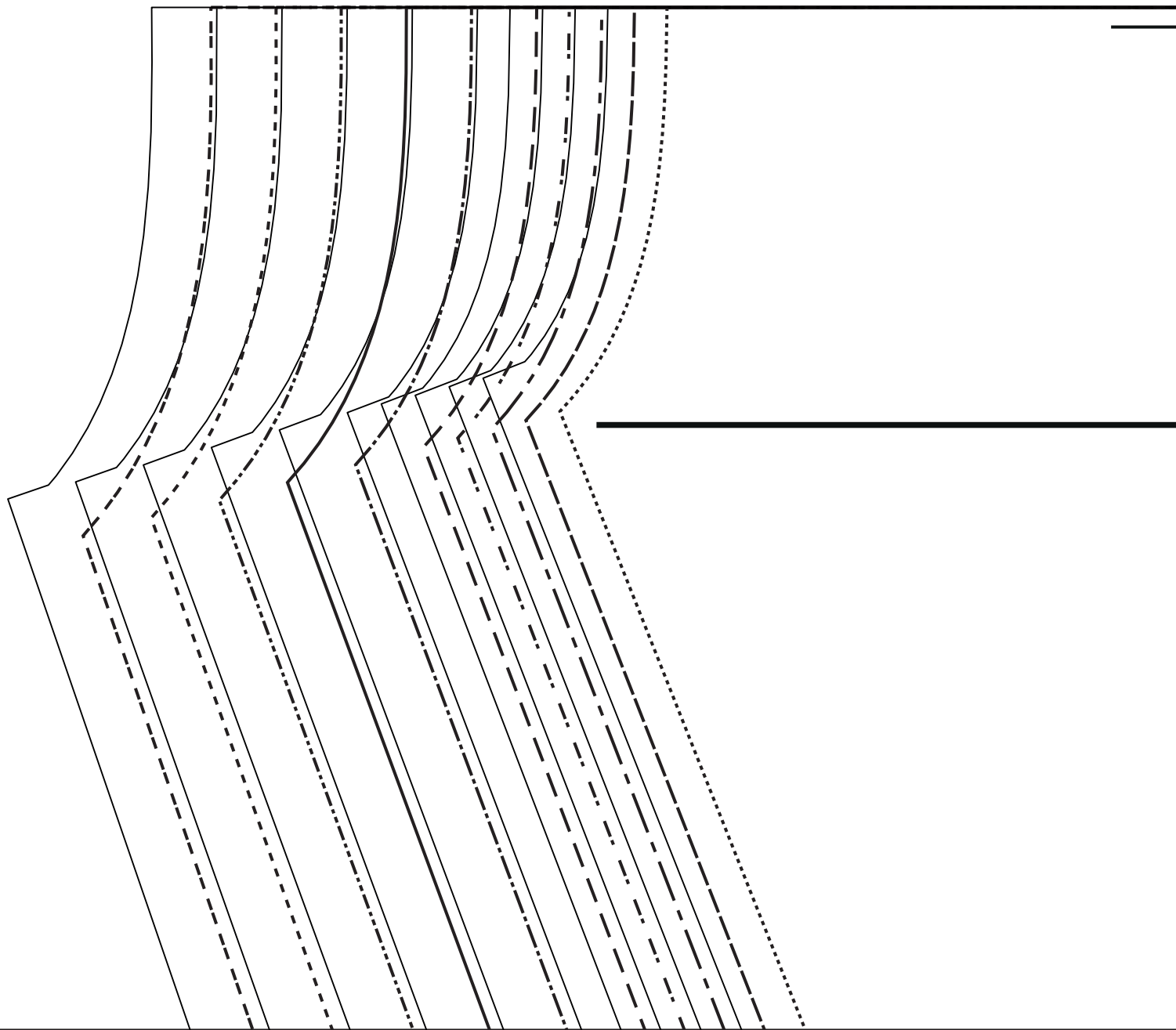
1	2	3	4	5	6
7	8	9	10	11	12
13	14	15	16	17	18
19	20	21			

Controlevierkant / Carré de controle / Test square / Kontrollquadrat



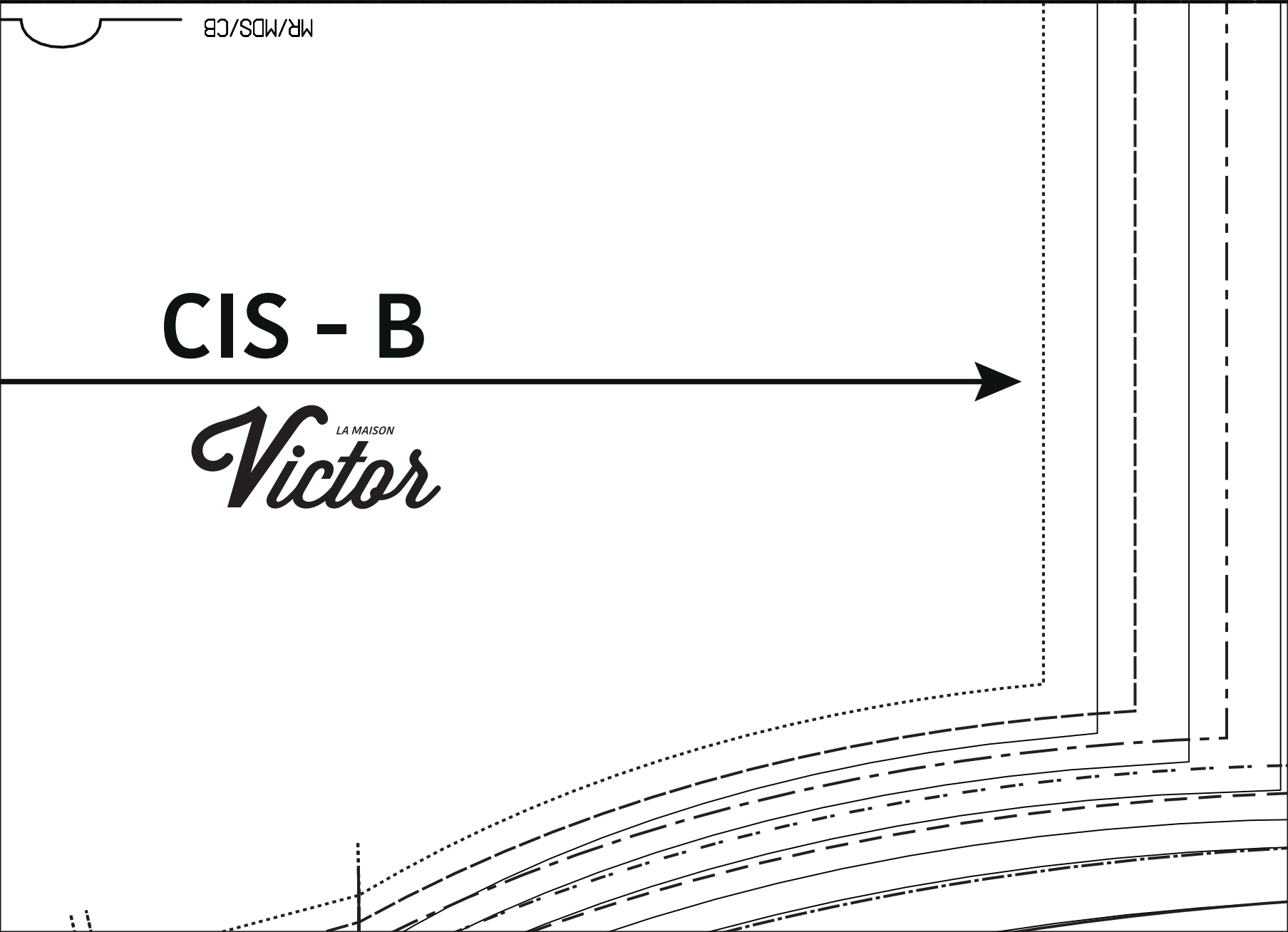


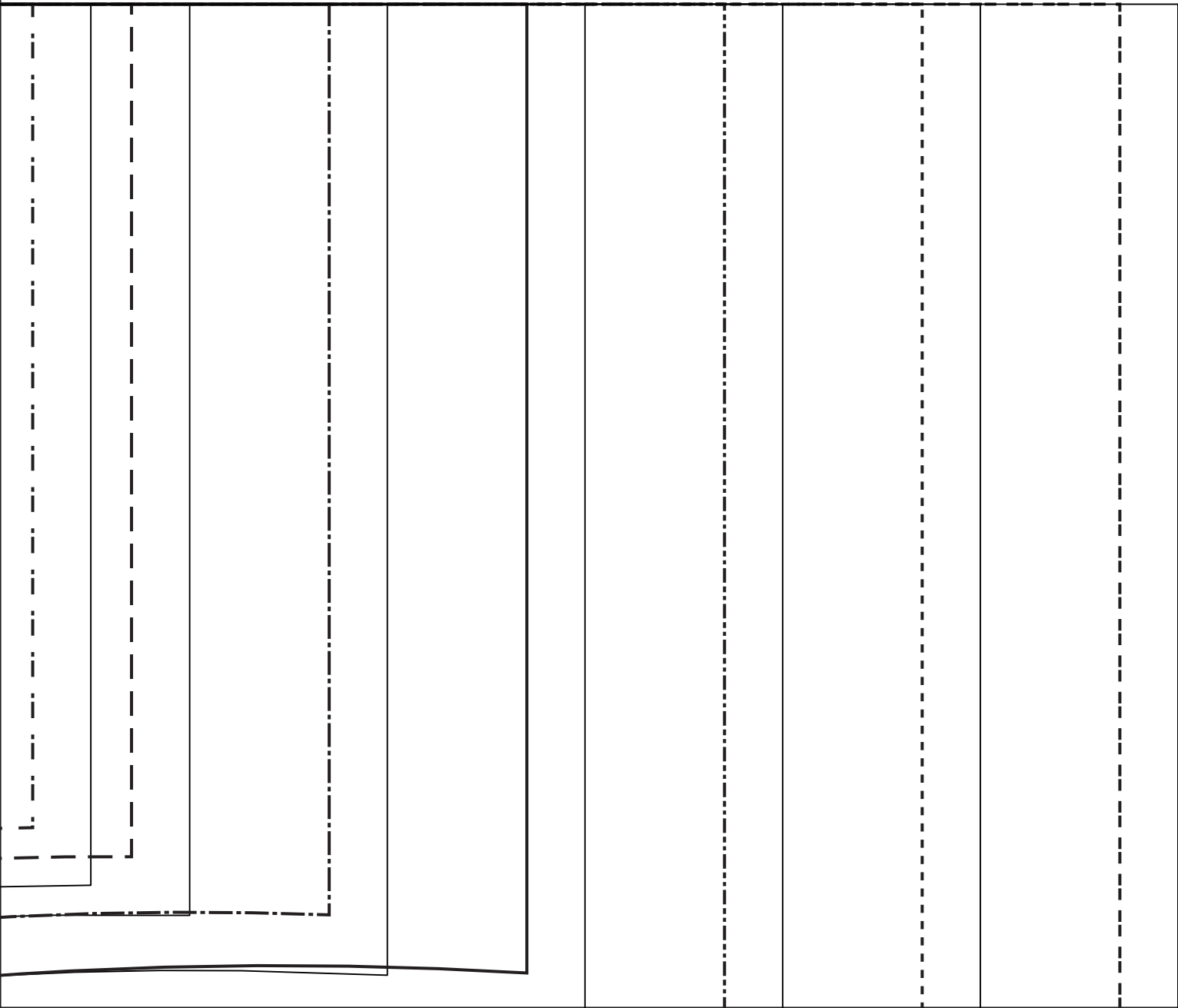


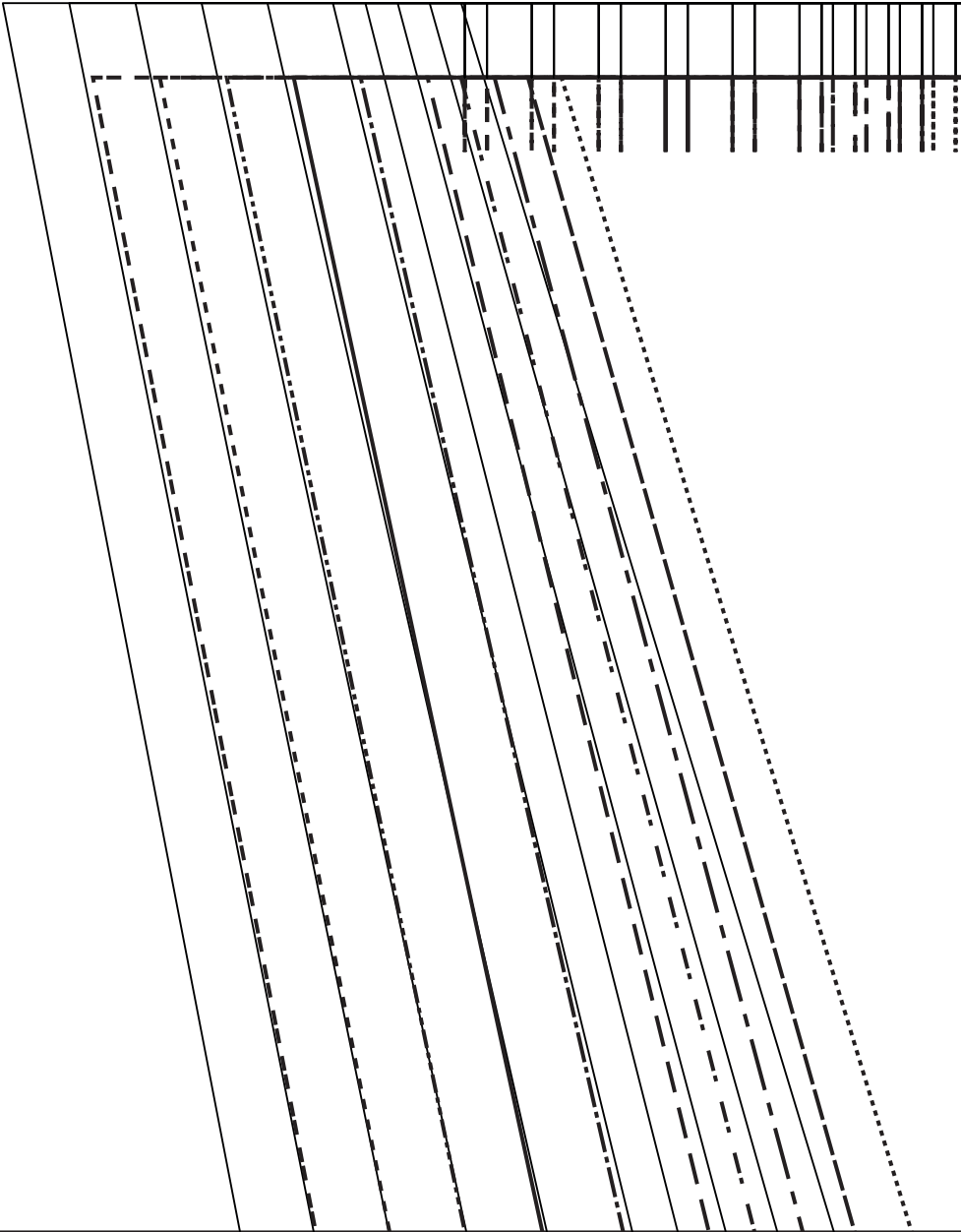


CIS - B

Victor
LA MAISON



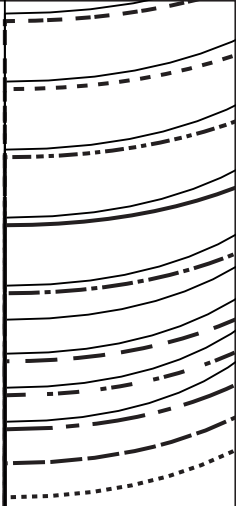
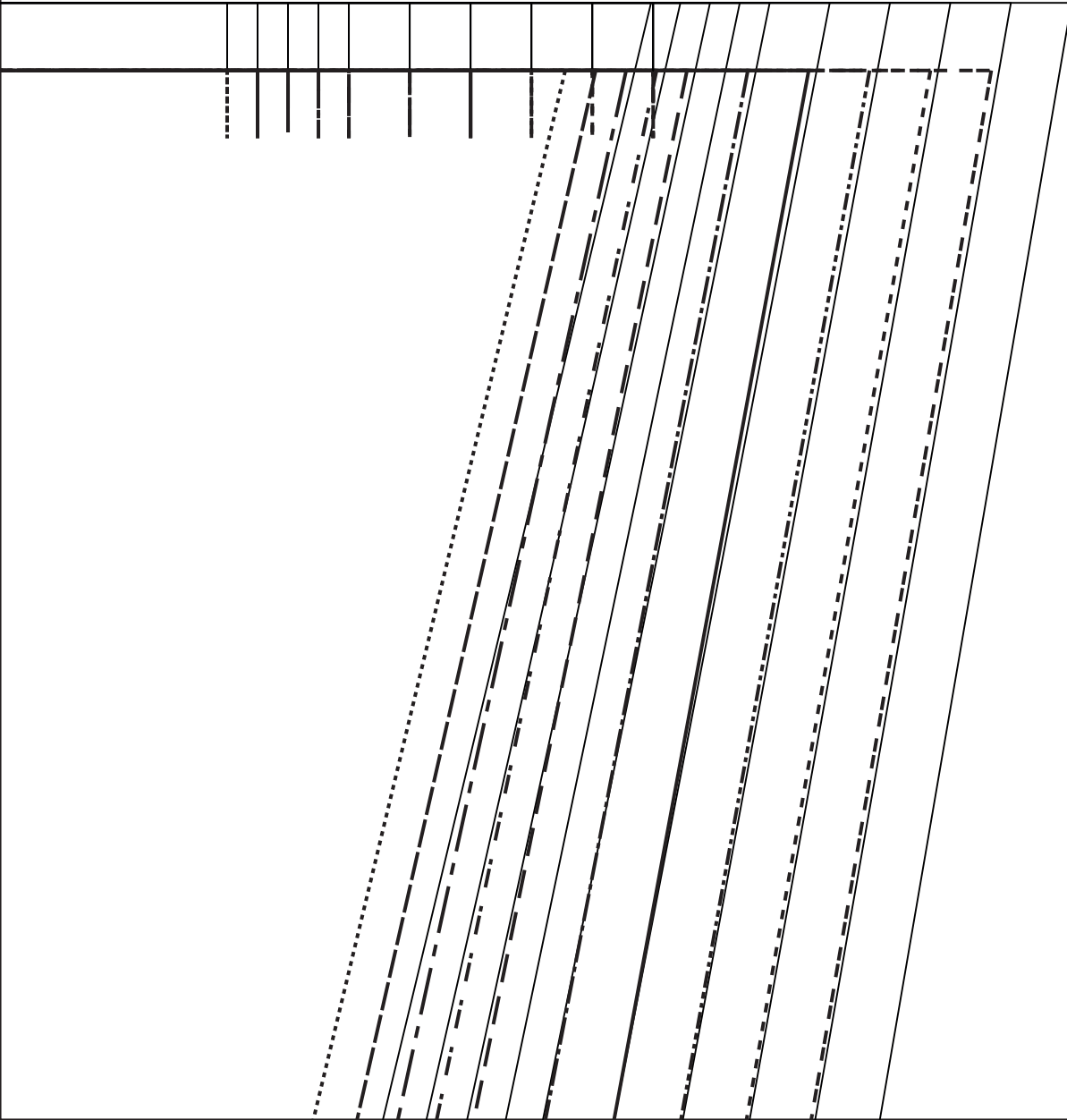




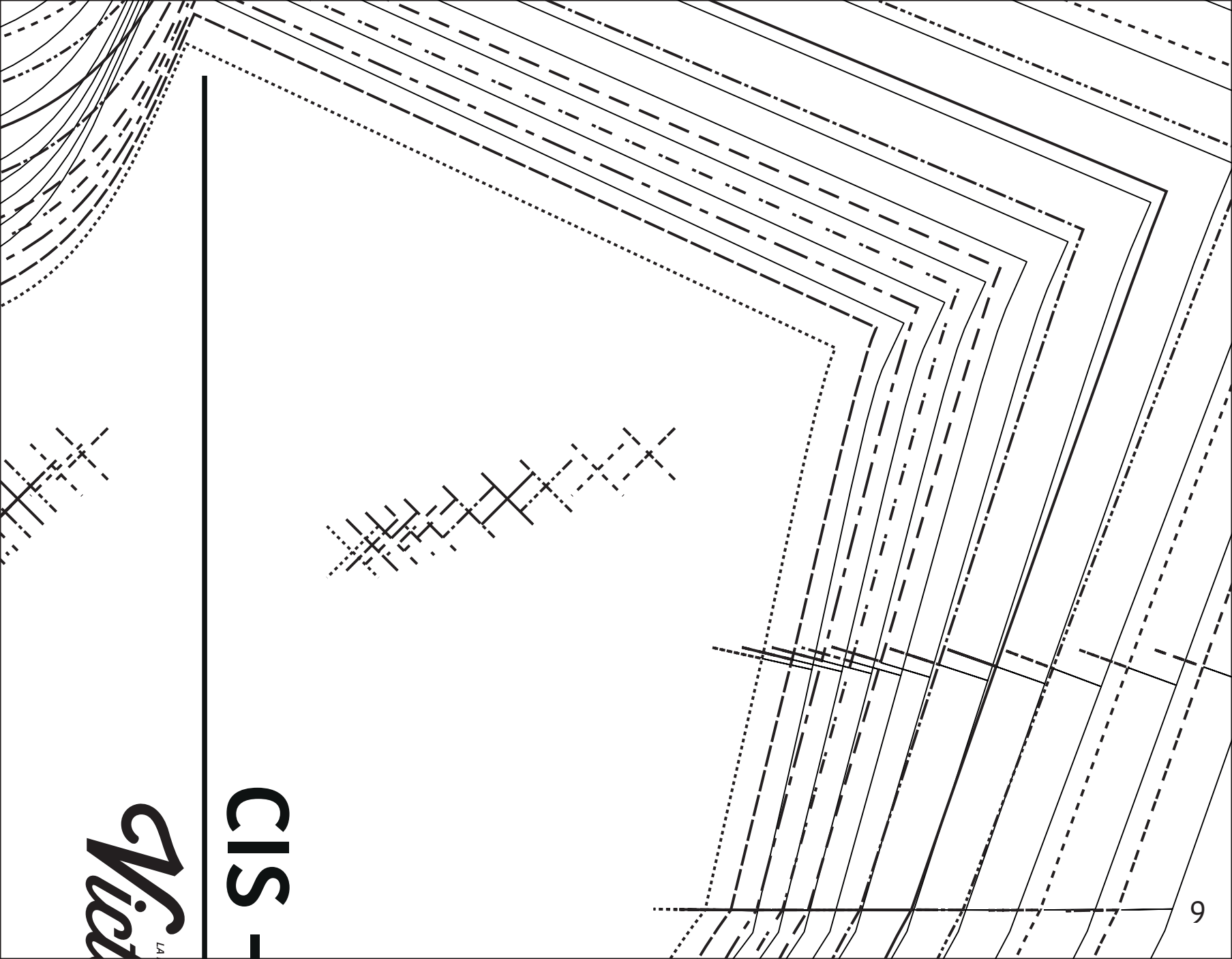
Victor
LA MAISON

CIS - D



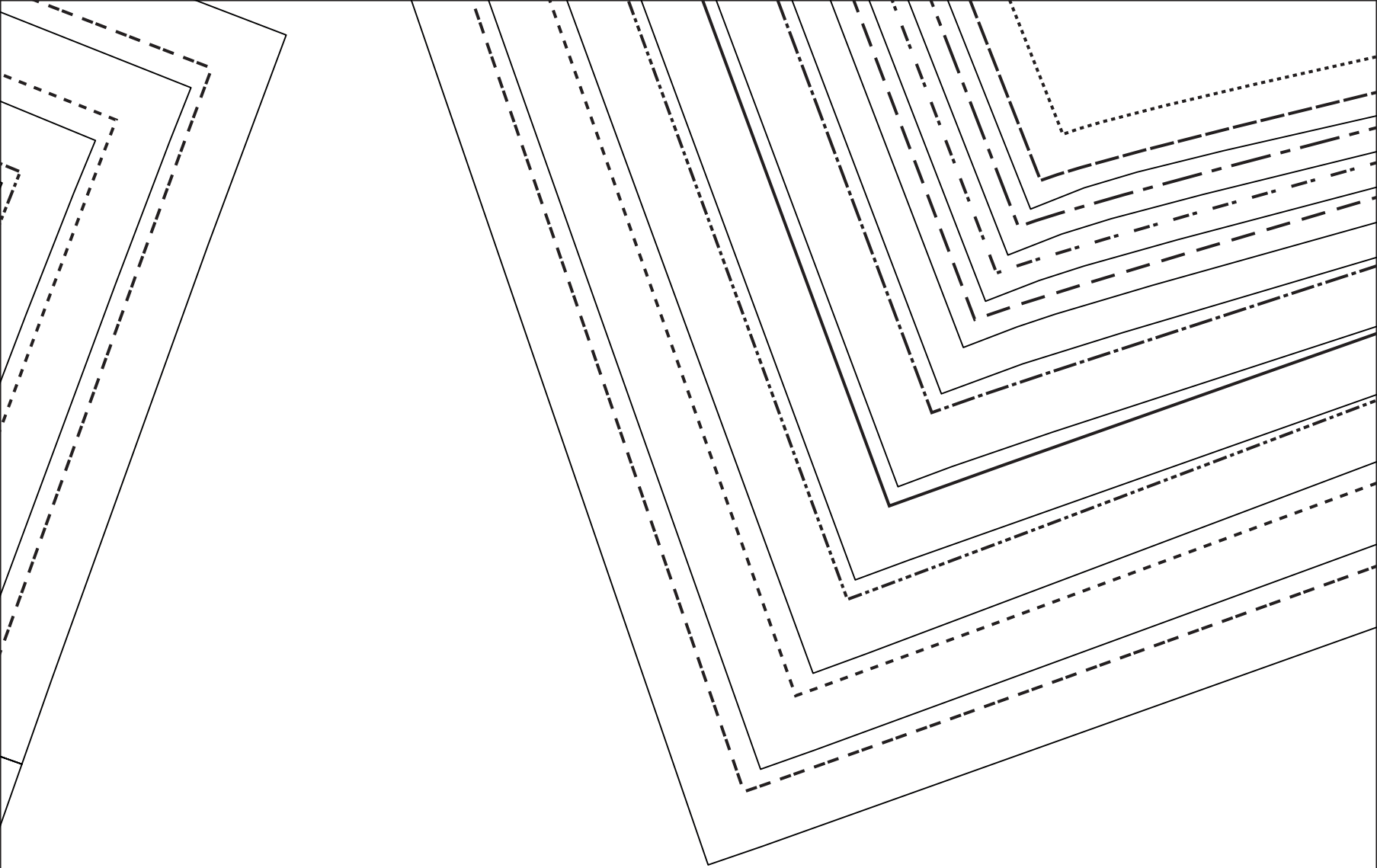


MM



Vict
LA

CIS -



ZN/CC/SS

ZN/CC/SS

ZN/CC/SS

ZN/CC/SS

ZN/CC/SS

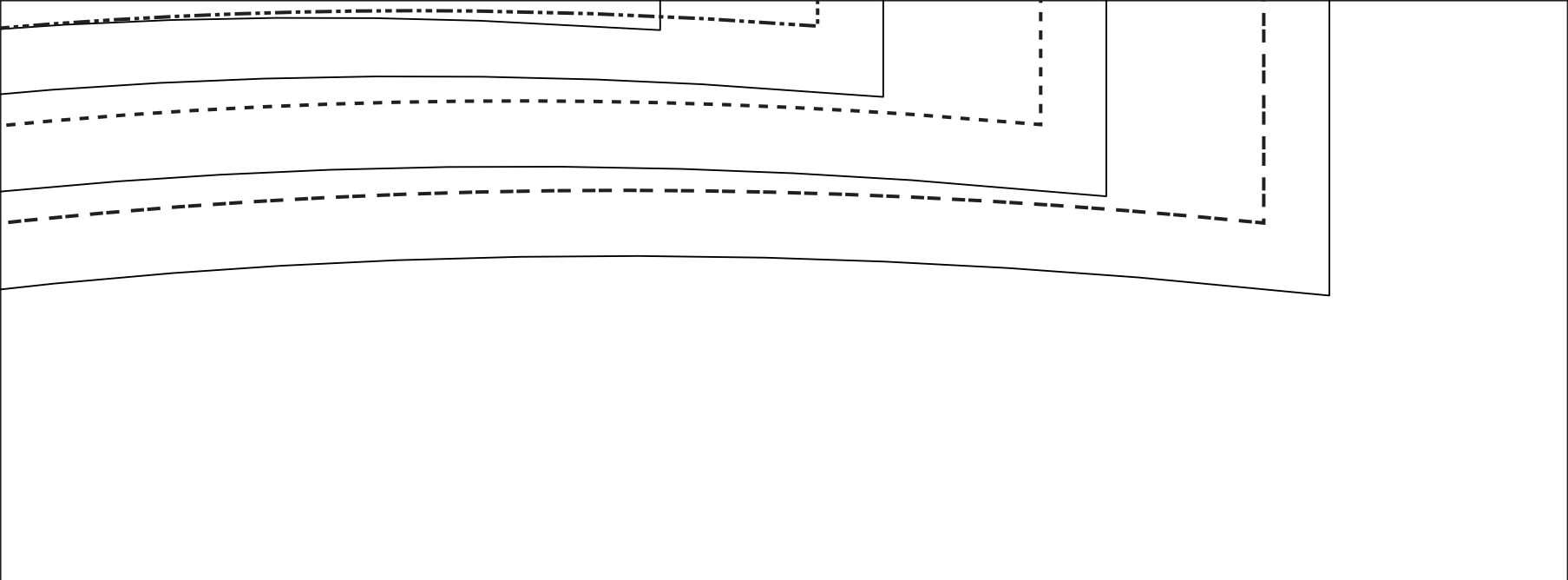
ZN/CC/SS

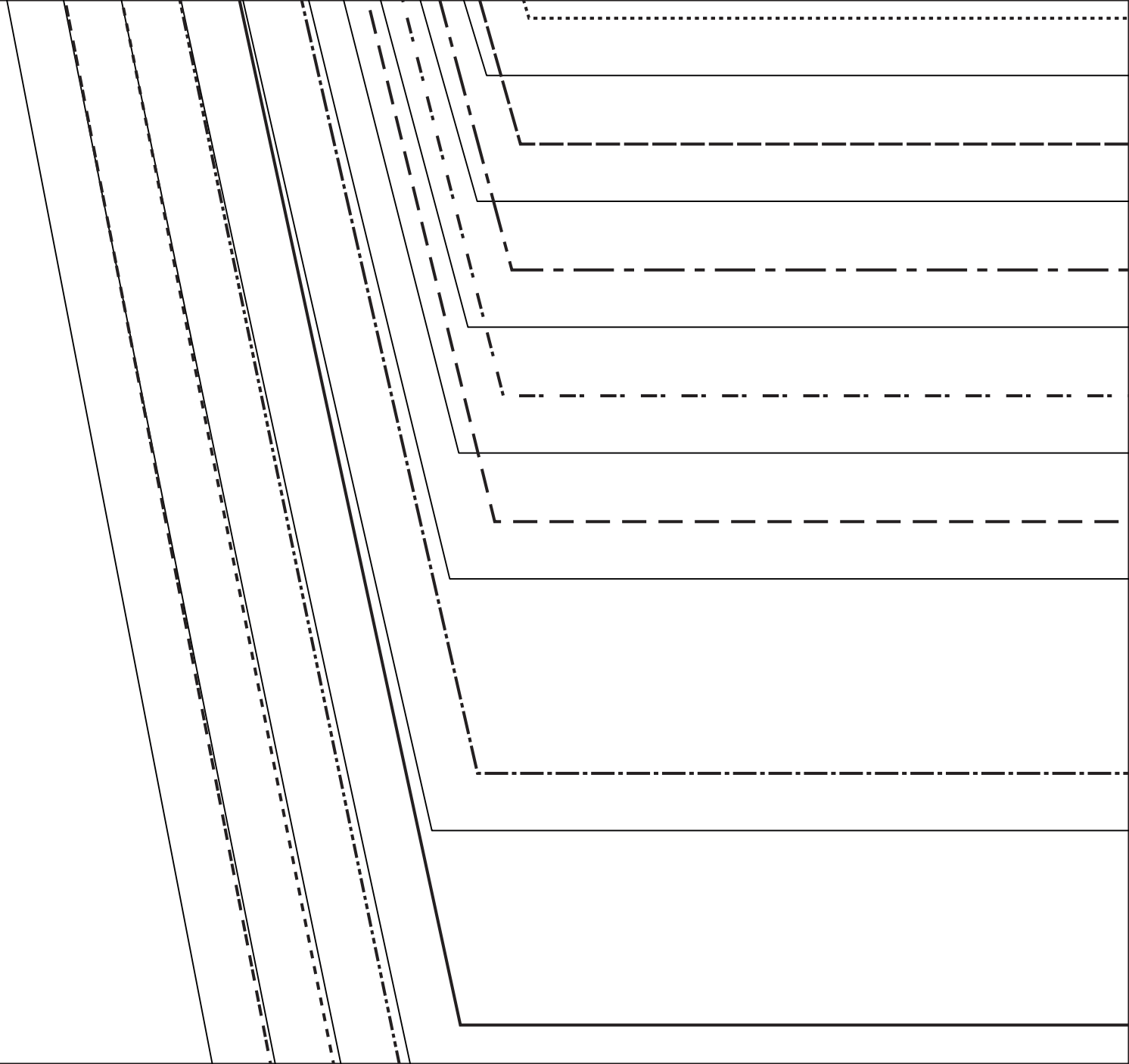
ZN/CC/SS

ZN/CC/SS

ZN/CC/SS

ZN/CC/SS

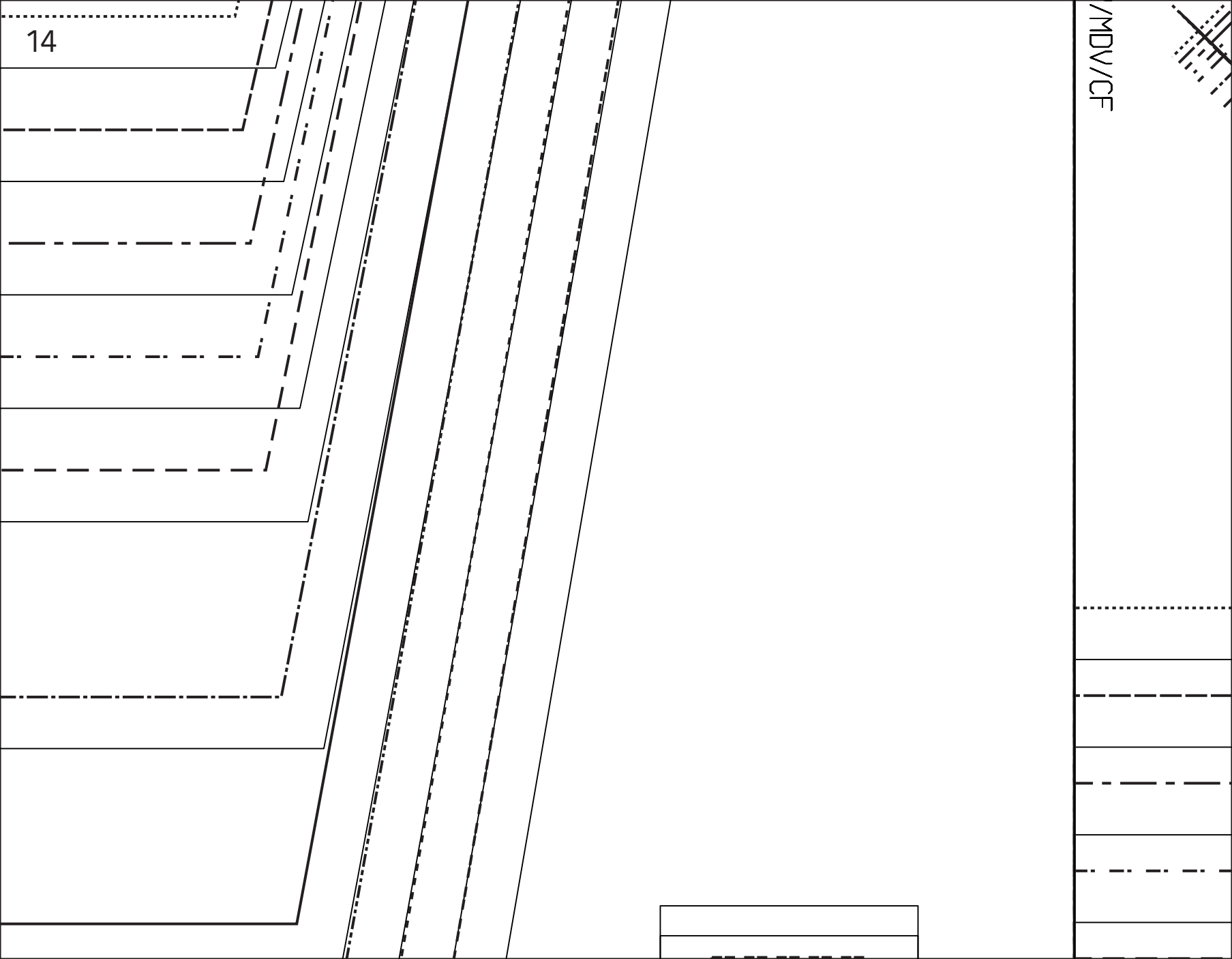




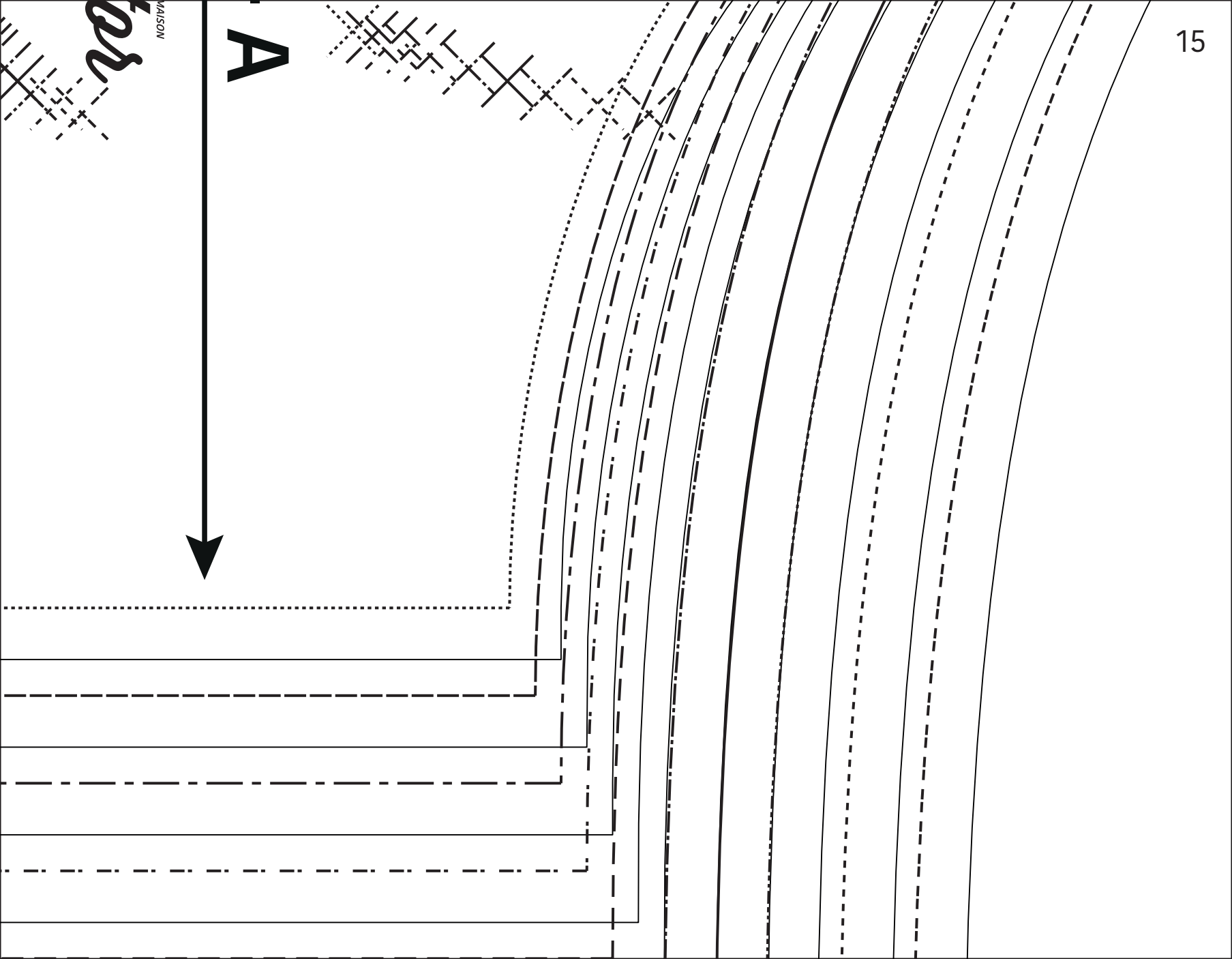


/MDV/CF

14



A



MAISON
to

