

Suvi
Jurk / Robe /
Dress / Kleid

Maten / Tailles / Sizes / Größen:

.....	30
-----	32
-----	34
-----	36
-----	38
-----	40
-----	42
-----	44
-----	46
-----	48

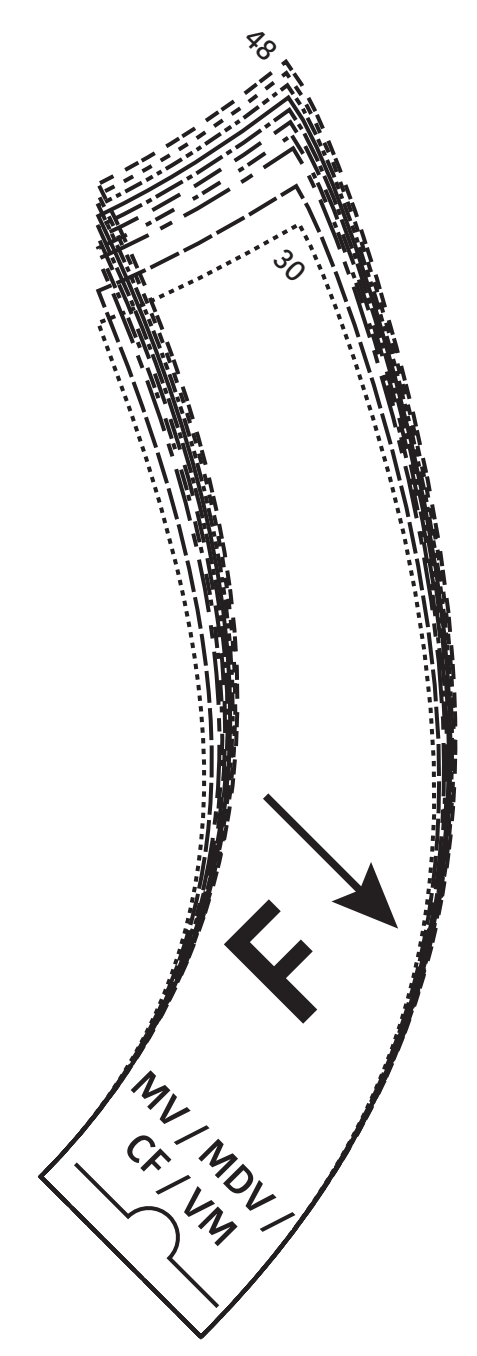
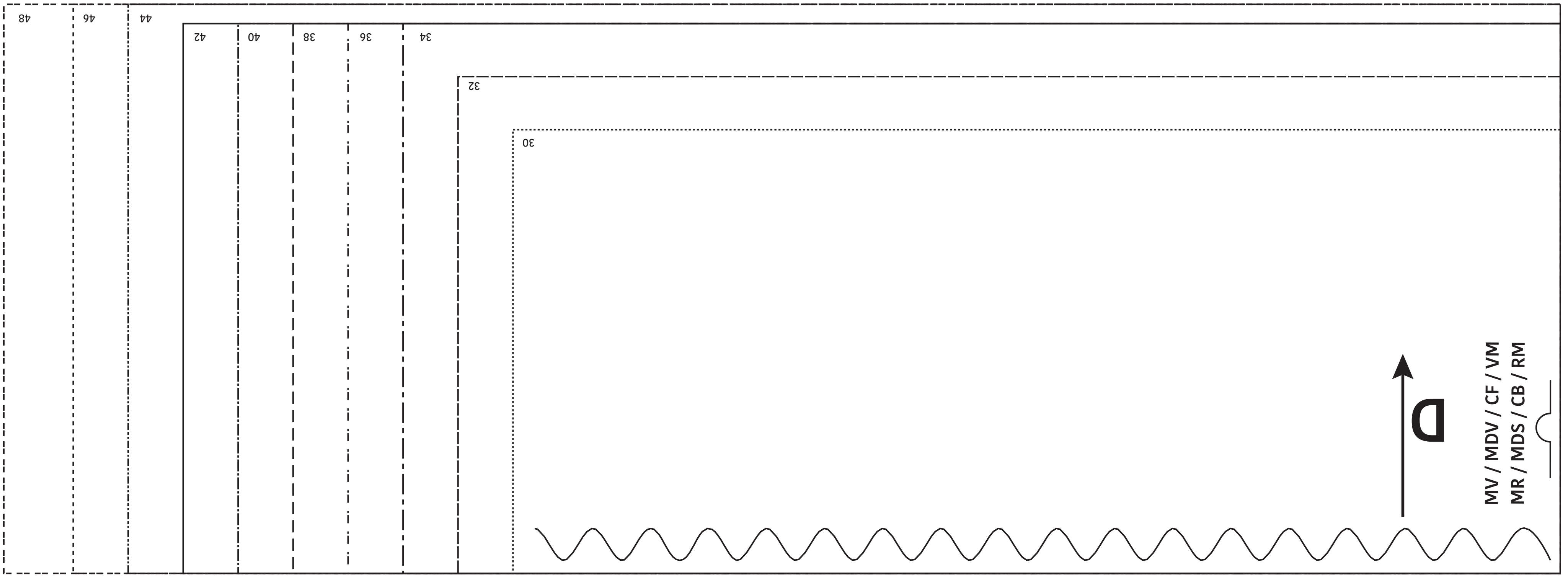
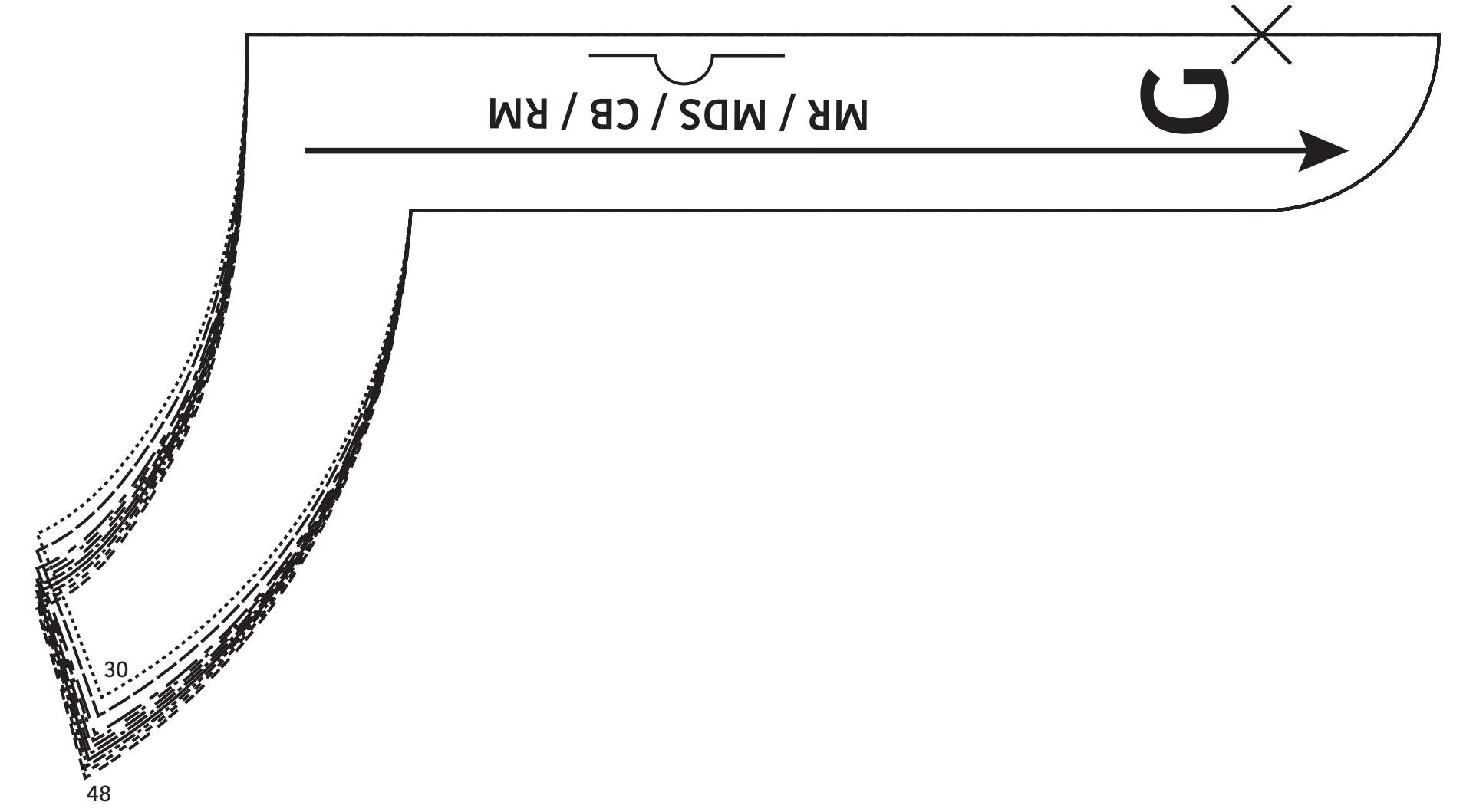
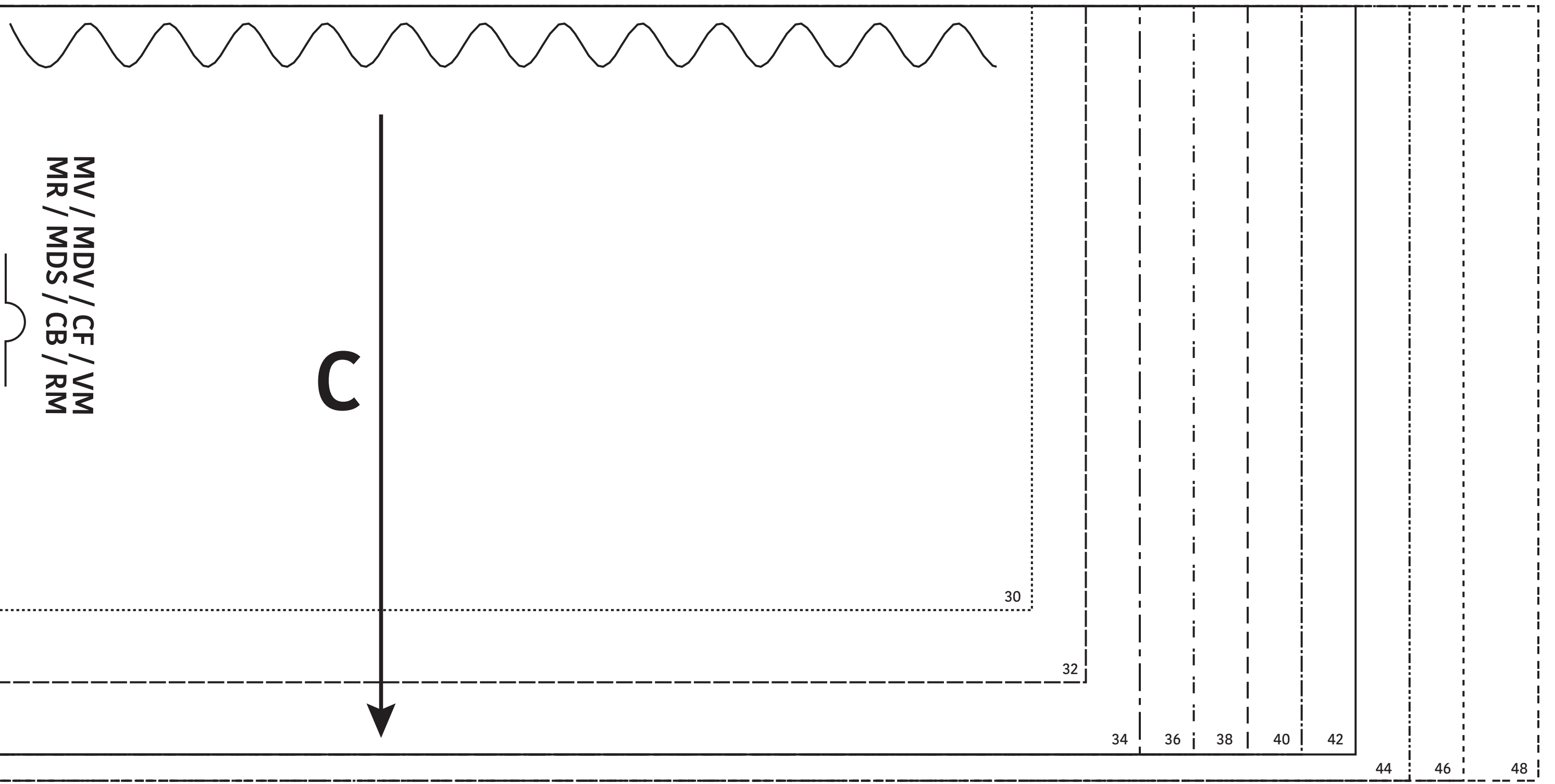
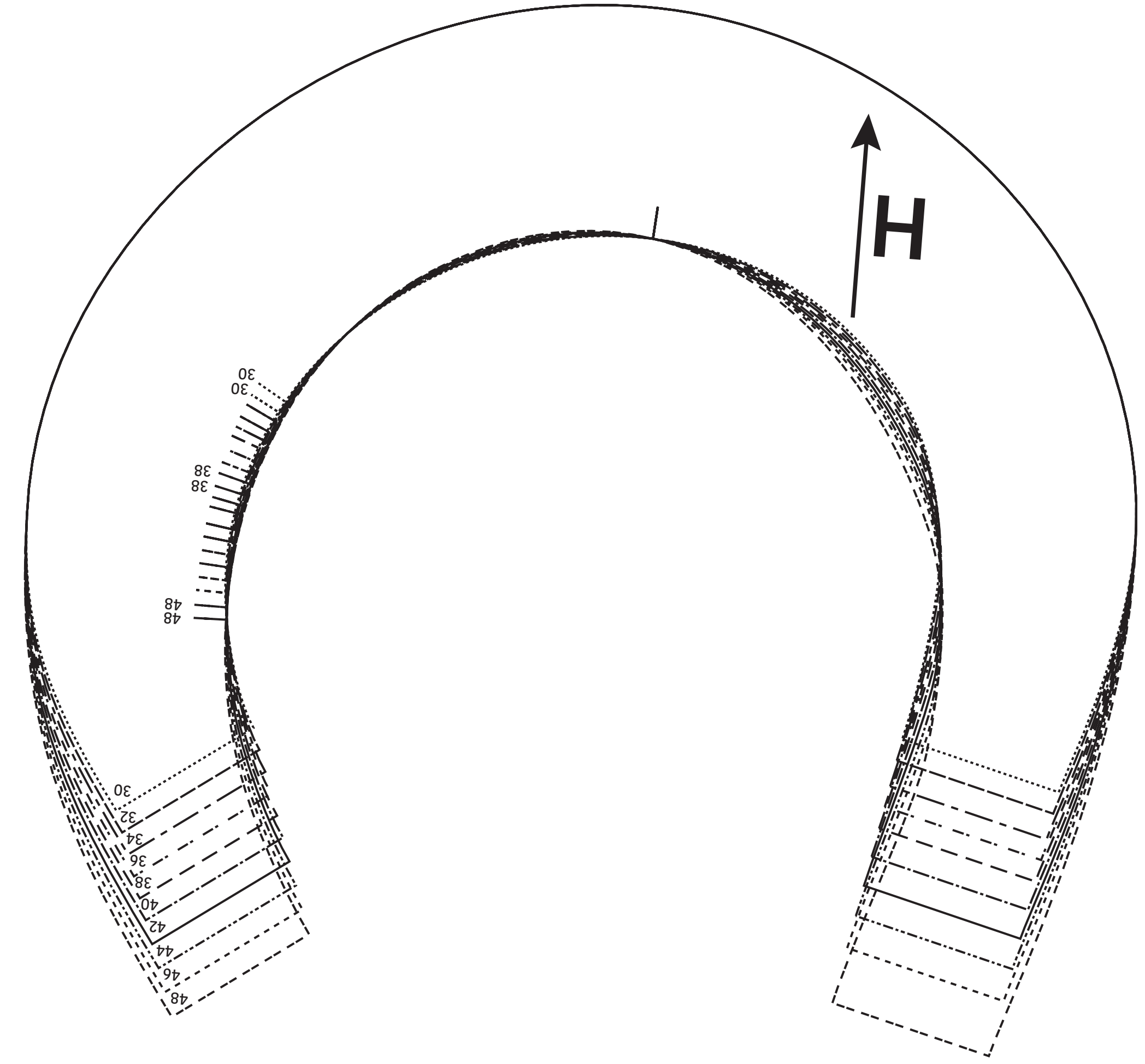
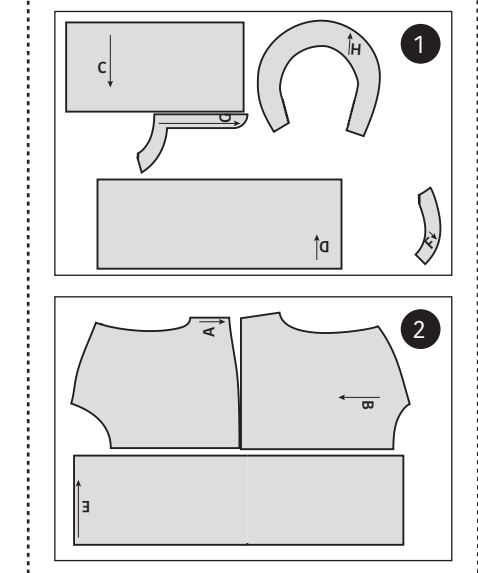
- Patroondelen / Pièces du patron / Pattern pieces / Schnittteile:**
- A** voorpand top / devant haut / top front panel / Vorderteil Top
 - B** rugpand top / dos haut / top back panel / Rückenteil Top
 - C** rokstrook boven / volant jupe haut / top skirt strip / oberer Rockstreifen
 - D** rokstrook midden / volant jupe milieu / middle skirt strip / mittlerer Rockstreifen
 - E** rokstrook onder / volant jupe bas / bottom skirt strip / unterer Rockstreifen
 - F** beleg VP / parementure DV / facing FP / Besatz VT
 - G** beleg RP / parementure DS / facing BP / Besatz RT
 - H** mouw / manche / sleeve / Ärmel

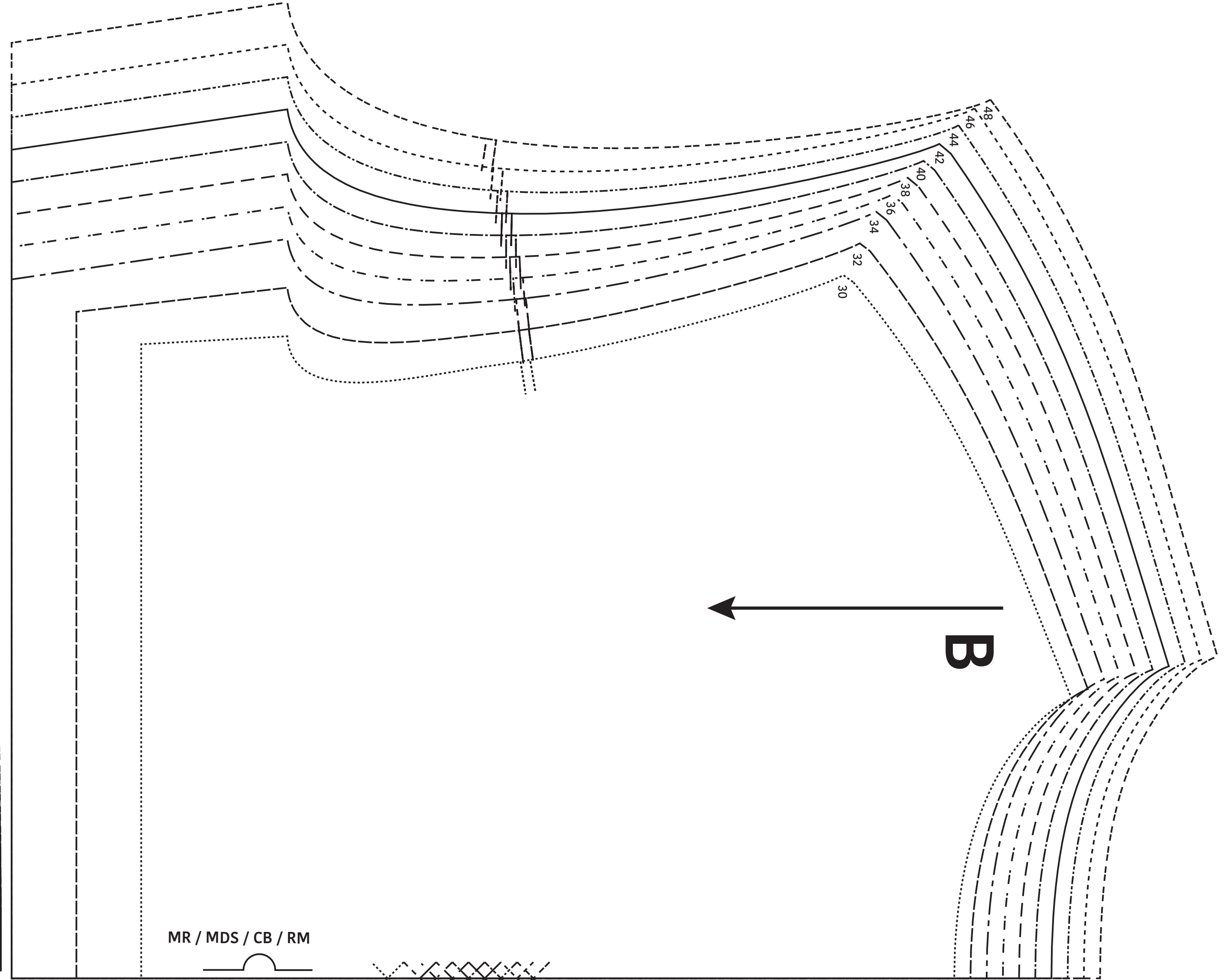
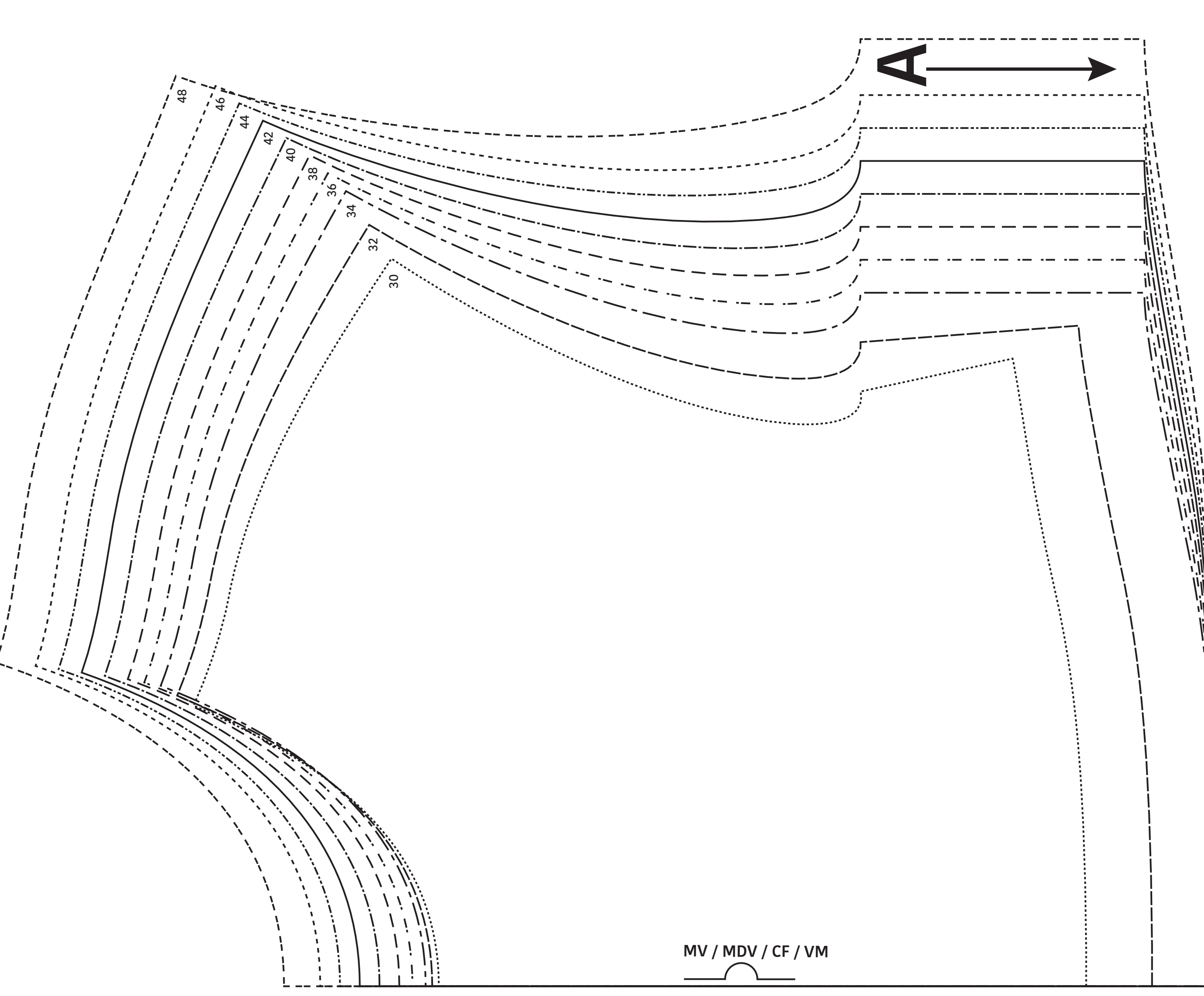
LET OPI! De patroondelen bevinden zich op verschillende raderbladen.

ATTENTION! Les pièces du patron sont réparties sur plusieurs planches.

IMPORTANT! The pattern pieces are located on different pattern sheets.

ACHTUNG! Die schnittteile befinden sich auf unterschiedlichen Schnittmusterbögen.





Suvi
 Jurk / Robe /
 Dress / Kleid
 Zie RADERBLAD 1 / Voir PLANCHE 1 /
 See PATTERN SHEET 1 /
 Siehe SCHNITTMUSTERBOGEN 1

