

# Lucas

## Broekje / Culotte / Trousers / Hose

### Maten / Tailles / Sizes / Größen:

.....	56
-----	62
-----	68
- . - . - . - . - . - .	74
-----	80
-----	86

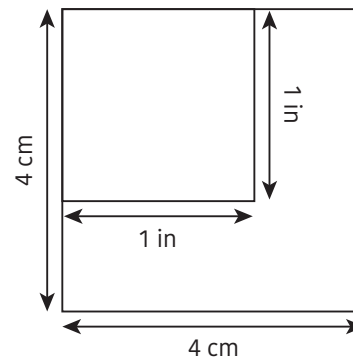
### Patroondelen / Pièces du patron / Pattern pieces / Schnittteile:

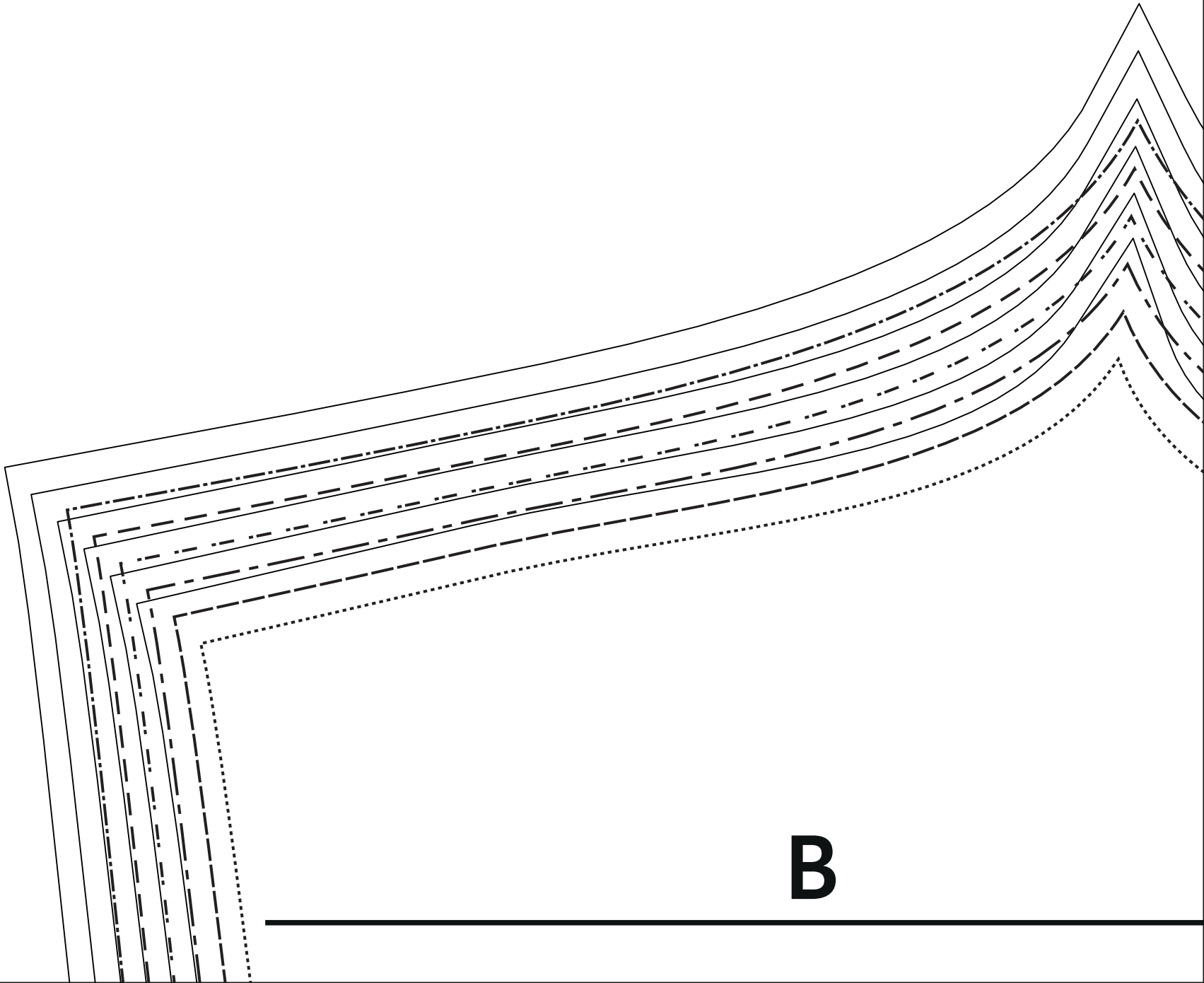
- A** voorpand / devant / front panel /  
Vorderteil
- B** rugpand / dos / back panel /  
Rückenteil
- C** zak / poche / pocket / Tasche
- D** tailleband / ceinture /  
waistband / Bund
- E** balg / soufflet / gusset / balg
- F** enkelboord / ourlet  
ankle trim / Knöchelbündchen

Patroonschema / Schéma du Patron / Pattern Diagram /  
Übersichtsplan zum Zusammenkleben

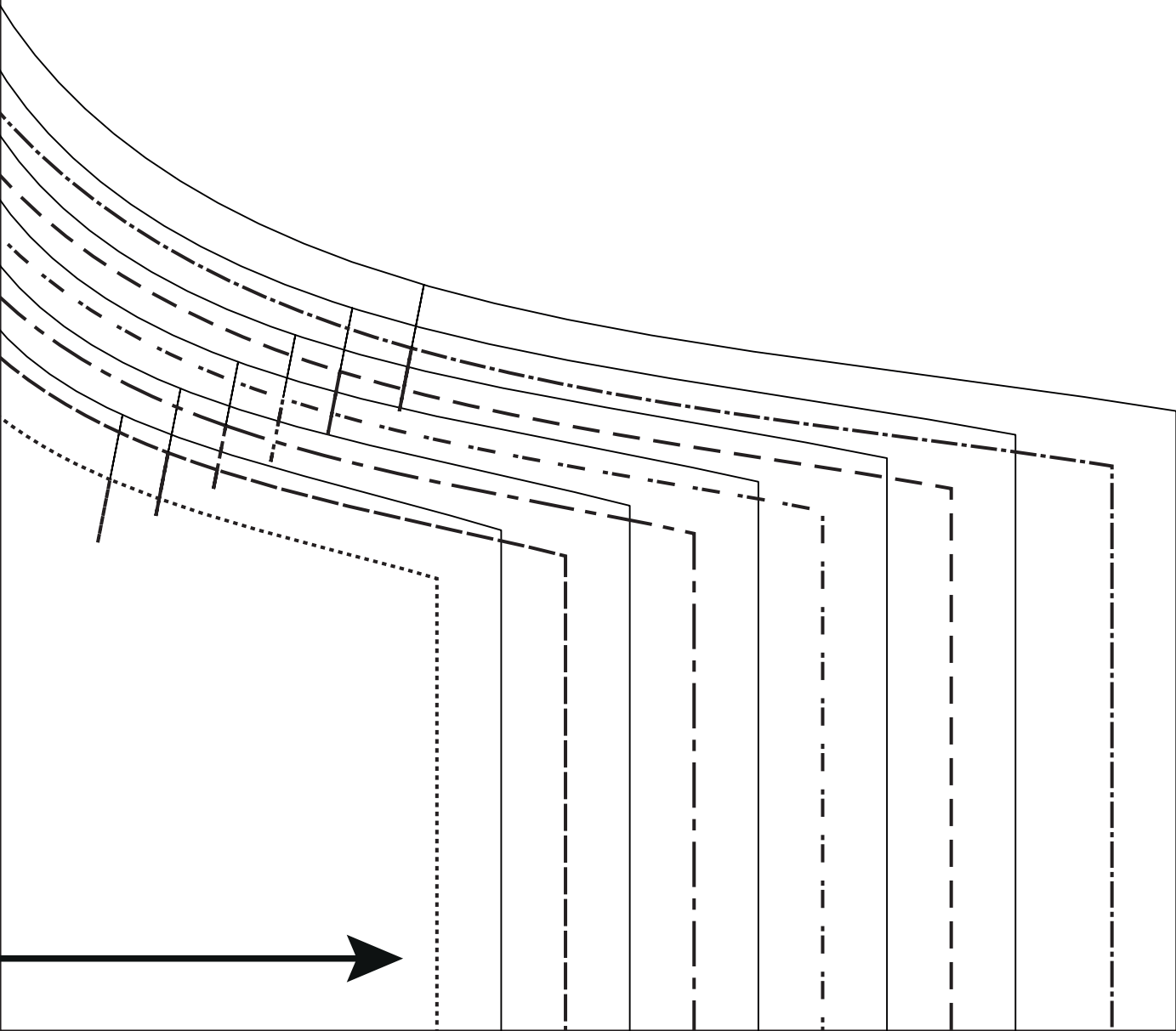
1	2	3
4	5	6
7	8	9

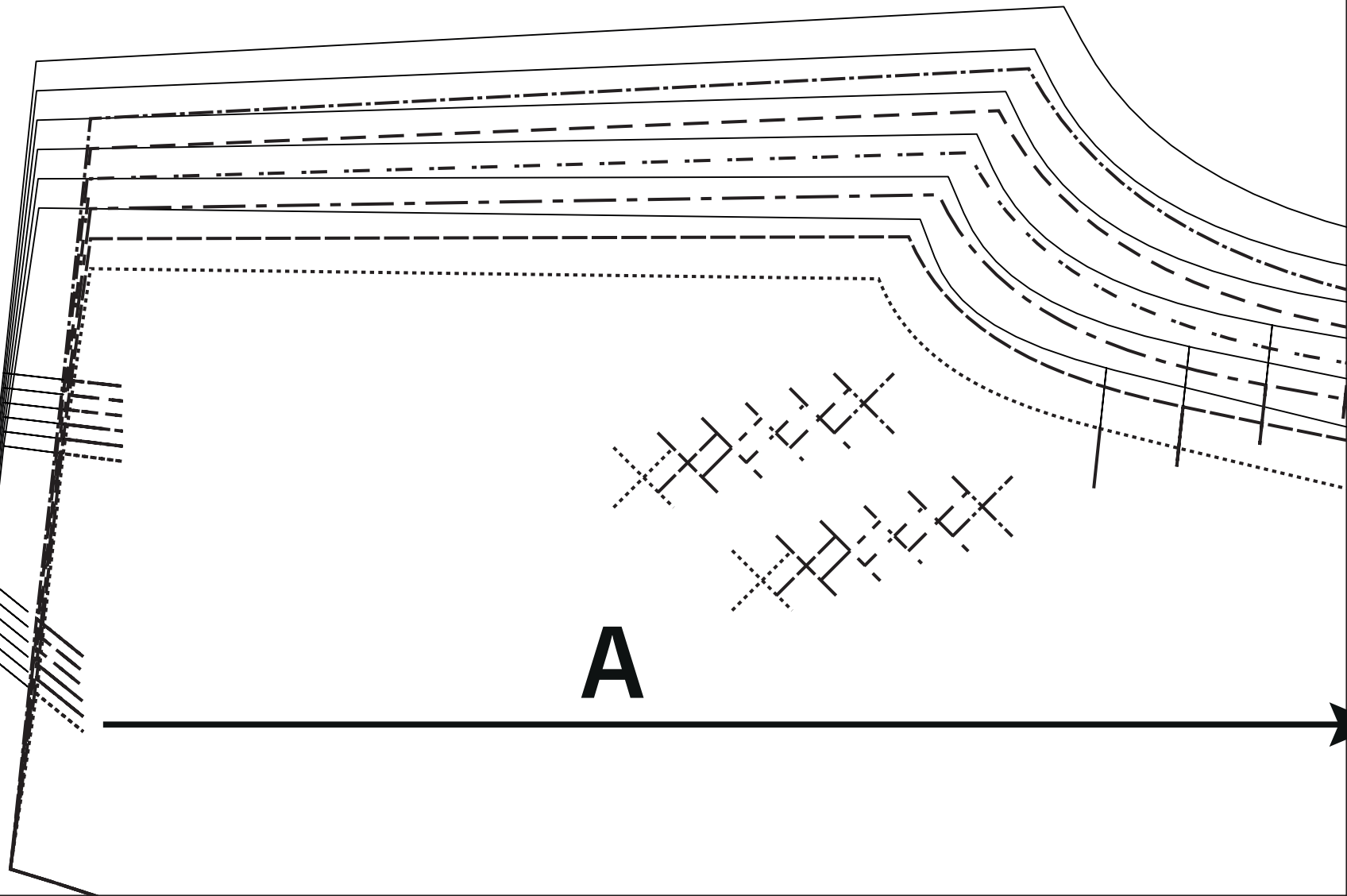
Controlevierkant / Carré de controle  
/ Test square / Kontrollquadrat





3





**A**

5

