

Patroonschema / Schéma du Patron / Pattern Diagram /  
Übersichtsplan zum Zusammenkleben

1	2	3	4	5	6
7	8	9	10	11	12
13	14	15	16	17	18
19	20	21	22	23	24
25	26	27			

# Rob

## Trui / Pull / Jumper / Pullover

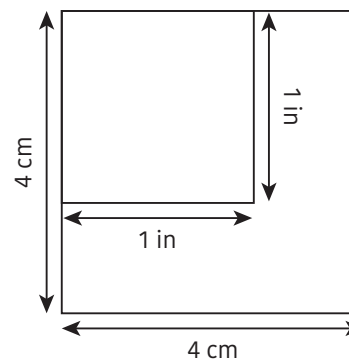
### Maten / Tailles / Sizes / Größen:

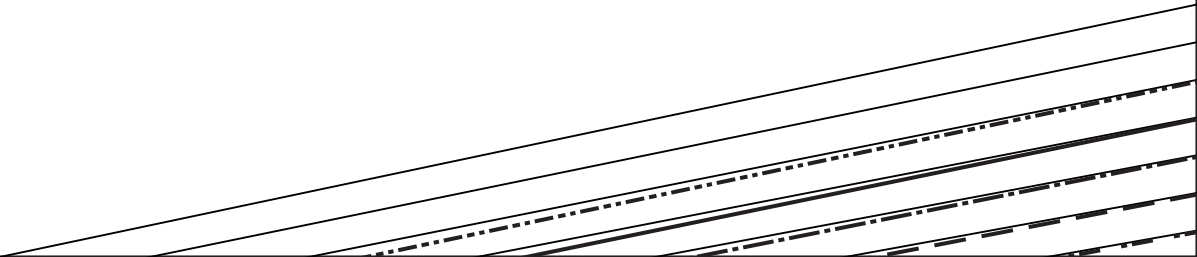
.....	XXS
-----	XS
- - - - -	S
· · · · ·	M
- - - - -	L
- · - · -	XL
—————	XXL
-----	XXXL

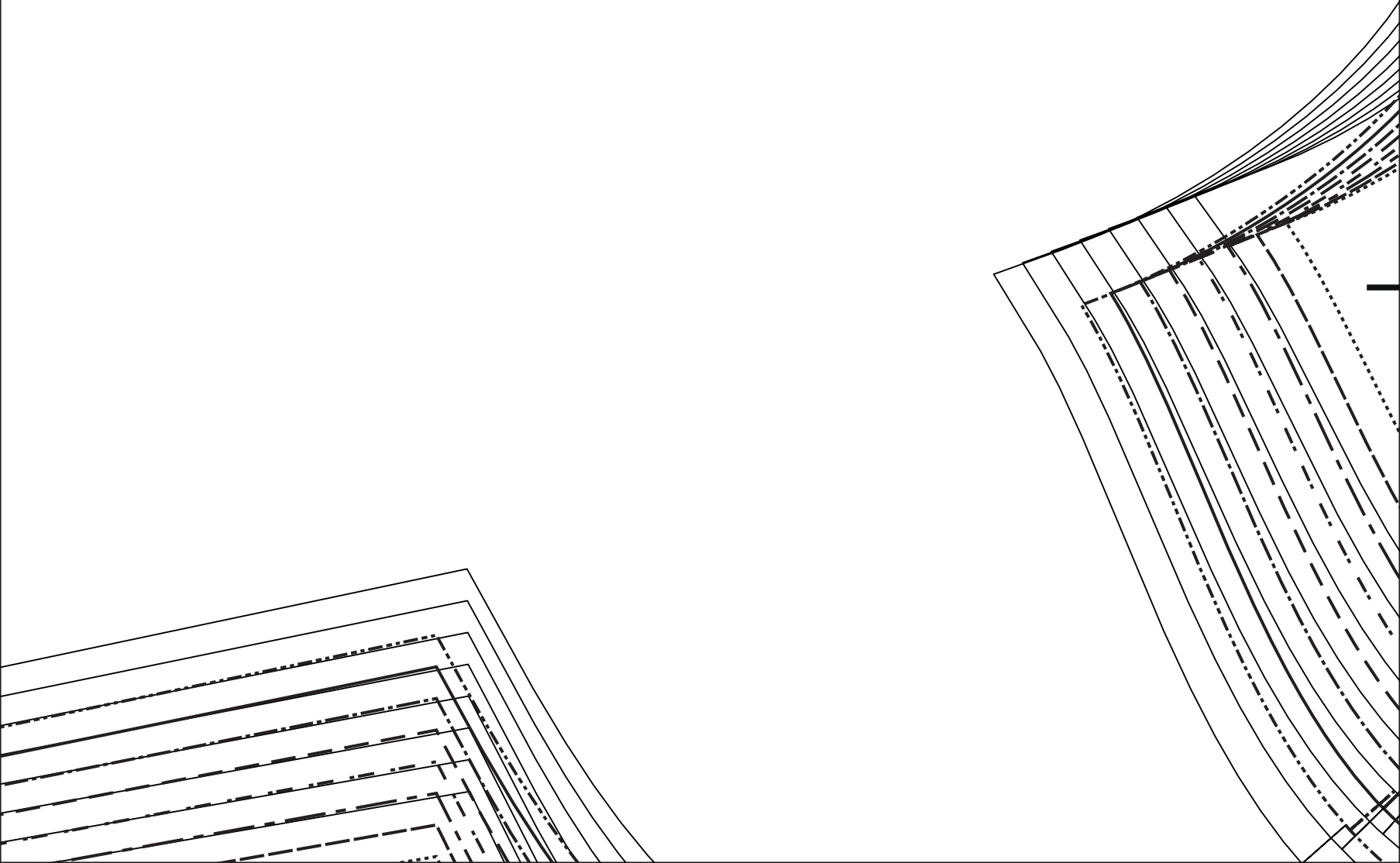
### Patroondelen / Pièces du patron / Pattern pieces / Schnittteile:

- A** voorpand / devant / front panel /  
Vorderteil
- B** rugpand / dos / back panel /  
Rückenteil
- C** mouw / manche / sleeve / Ärmel
- D** kraag / col / collar / Kragen
- E** zak / poche / pocket / Tasche

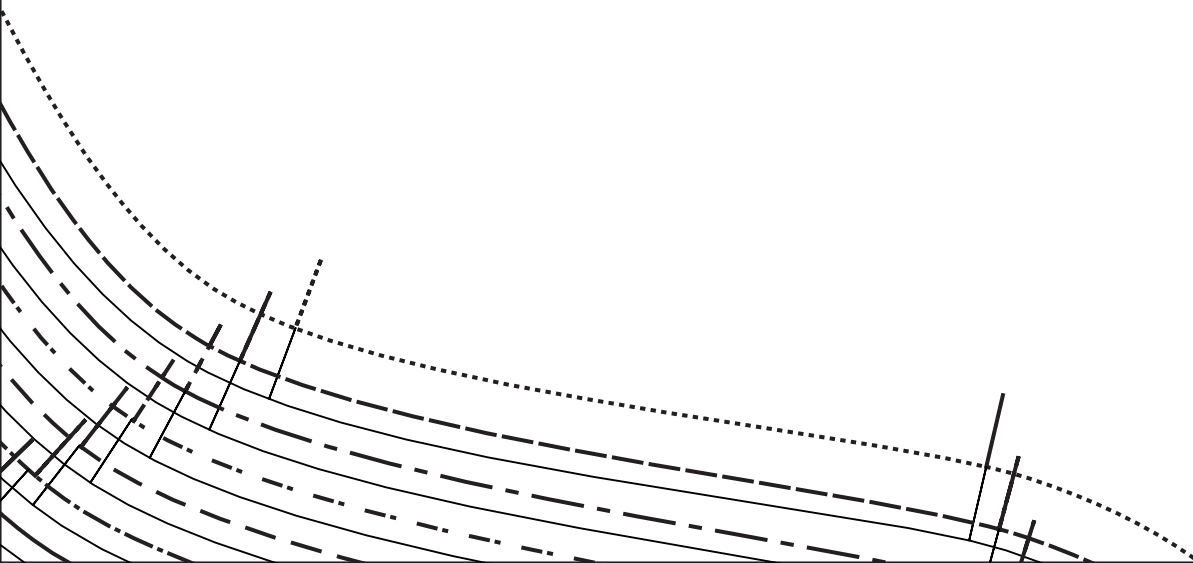
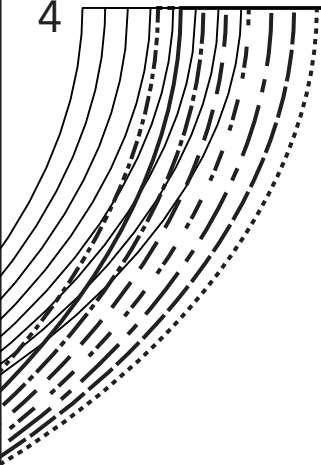
### Controlevierkant / Carré de controle / Test square / Kontrollquadrat







4

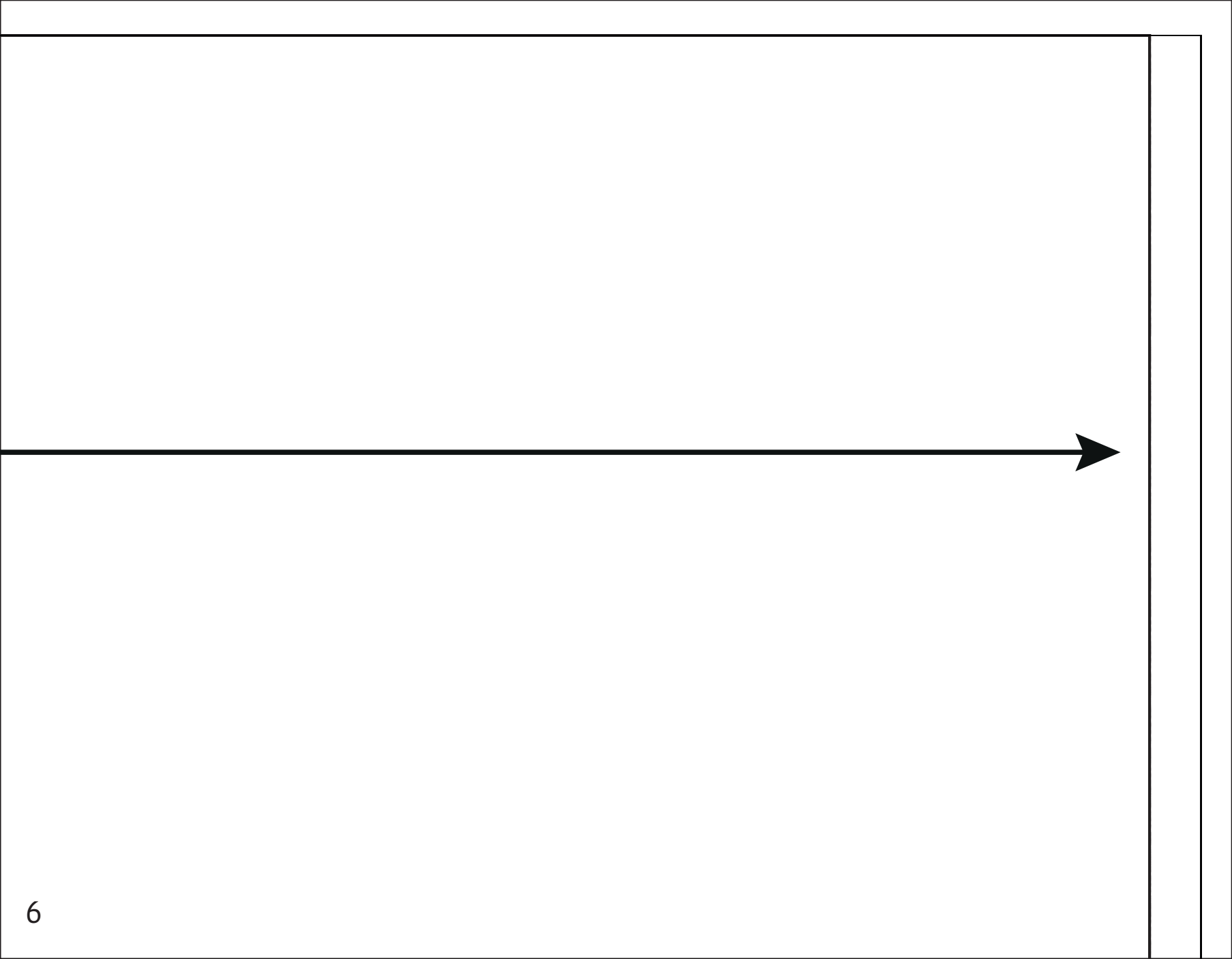


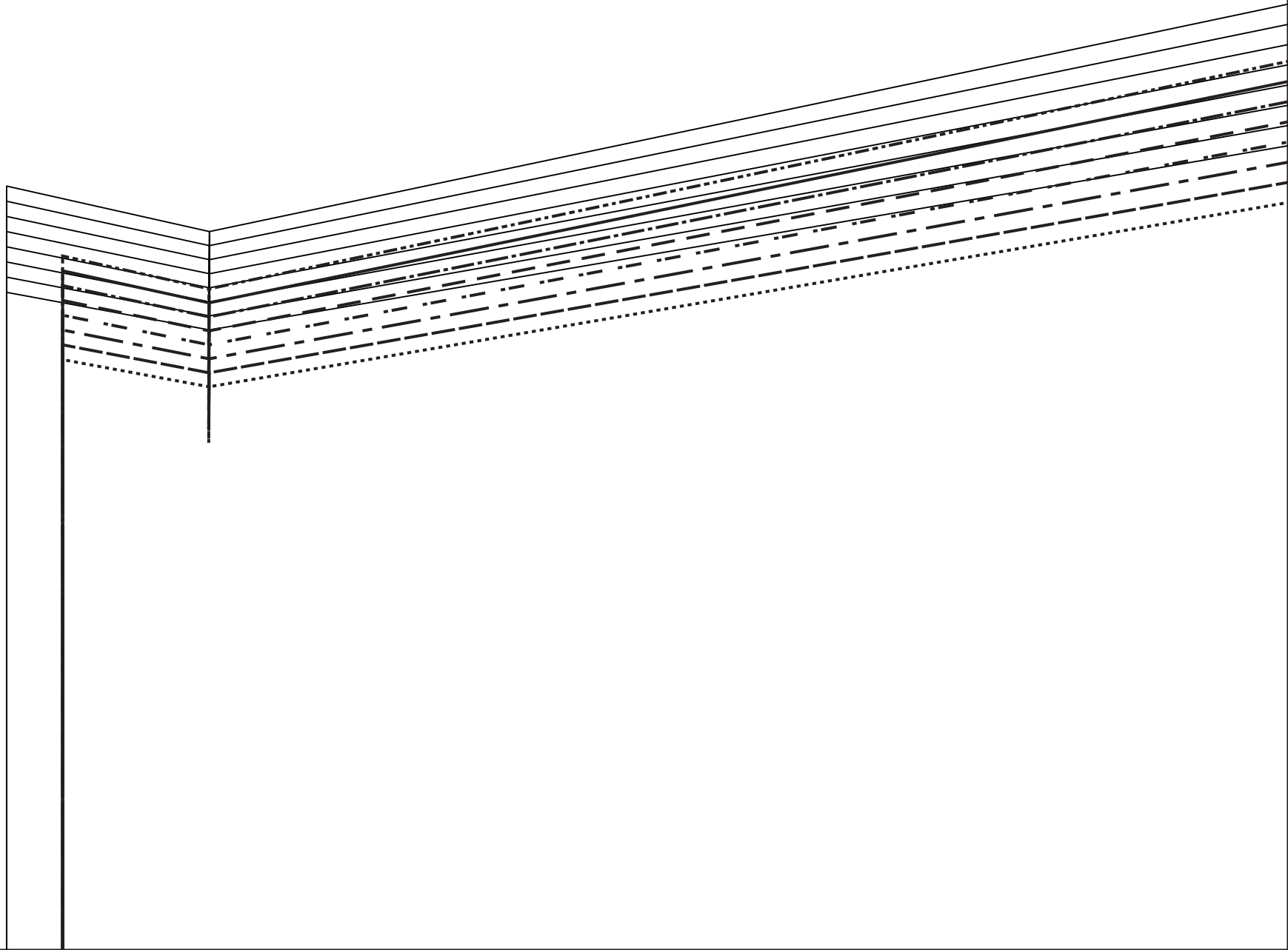


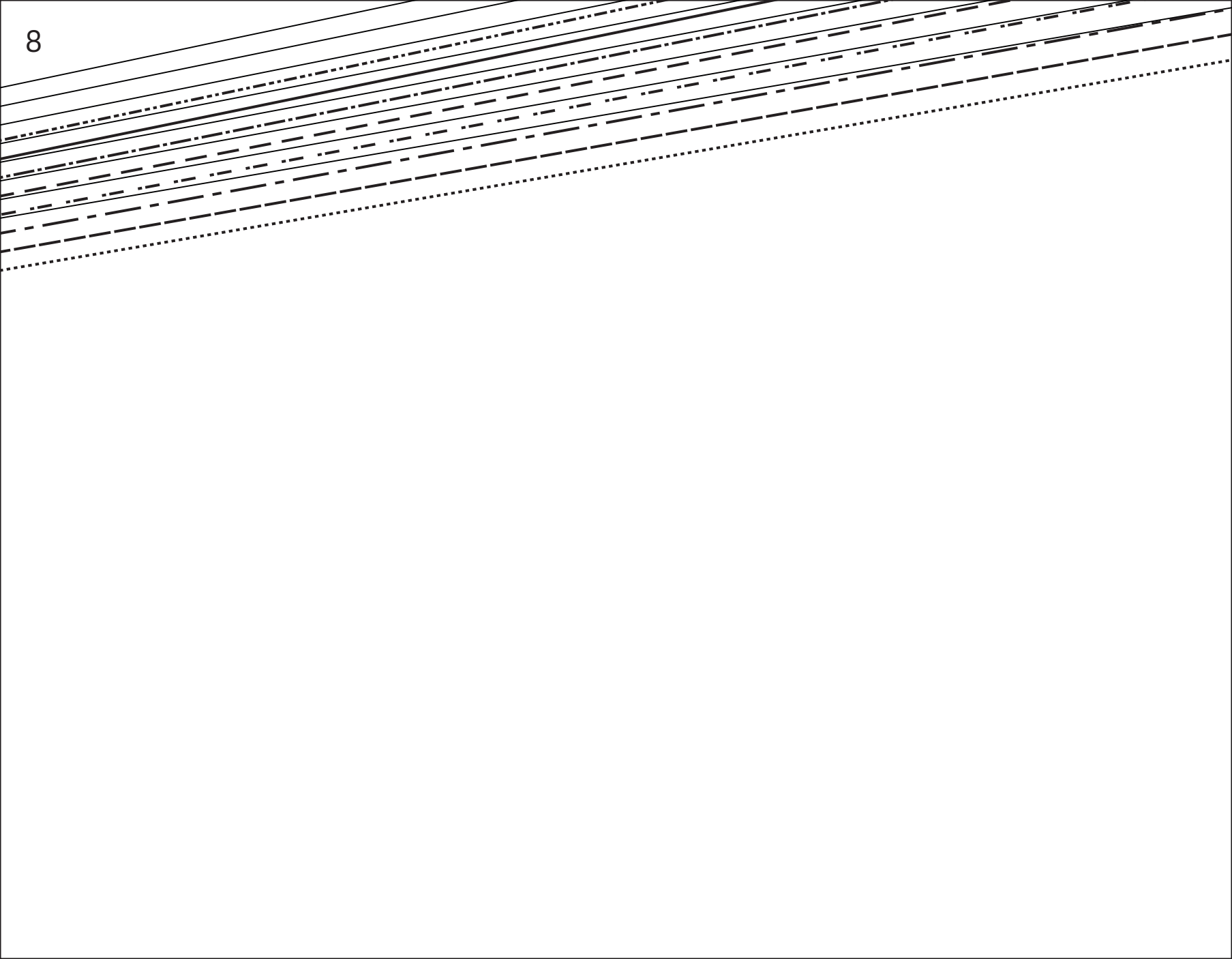
MV/MDV/CF/VM

**A**

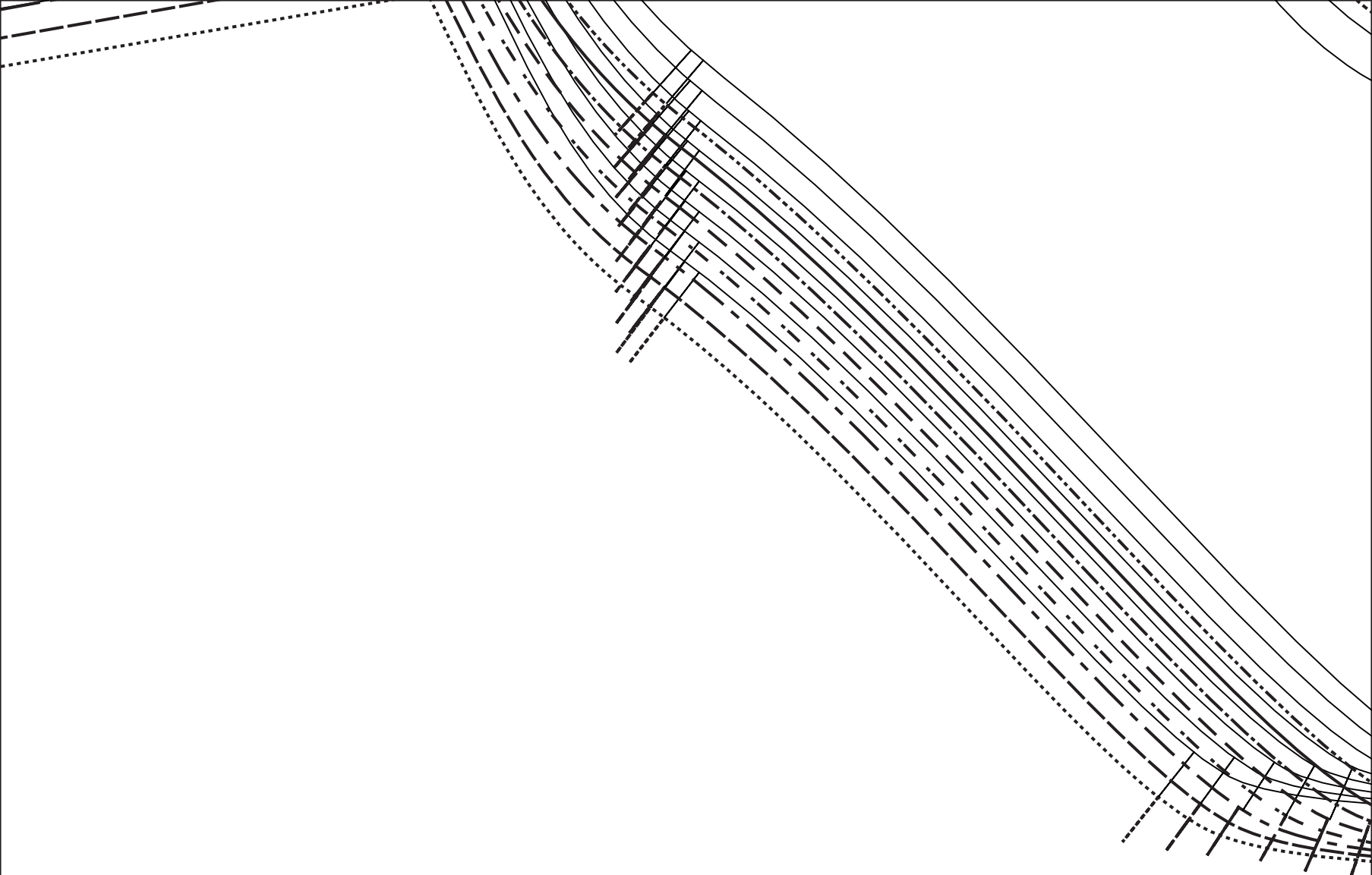


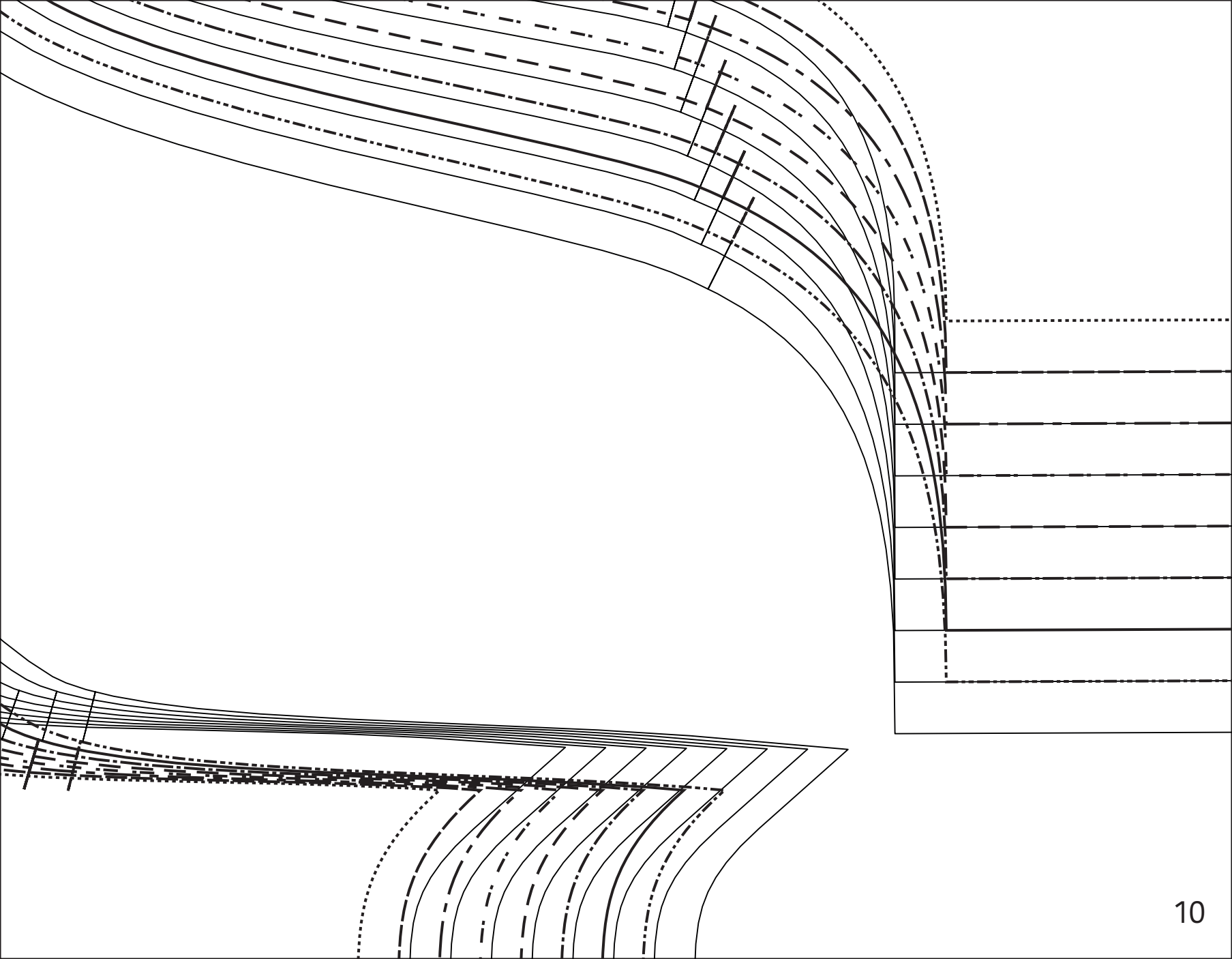


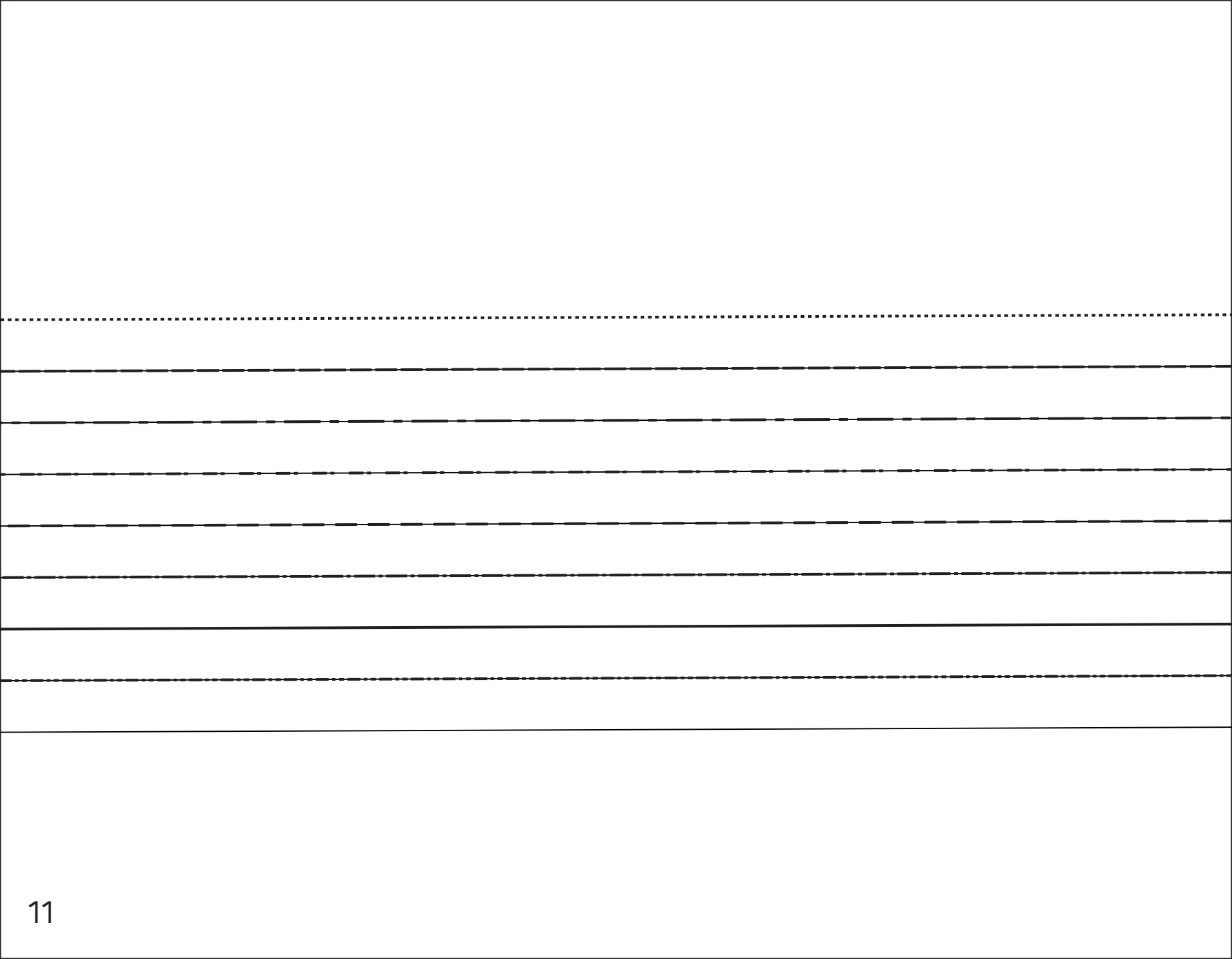




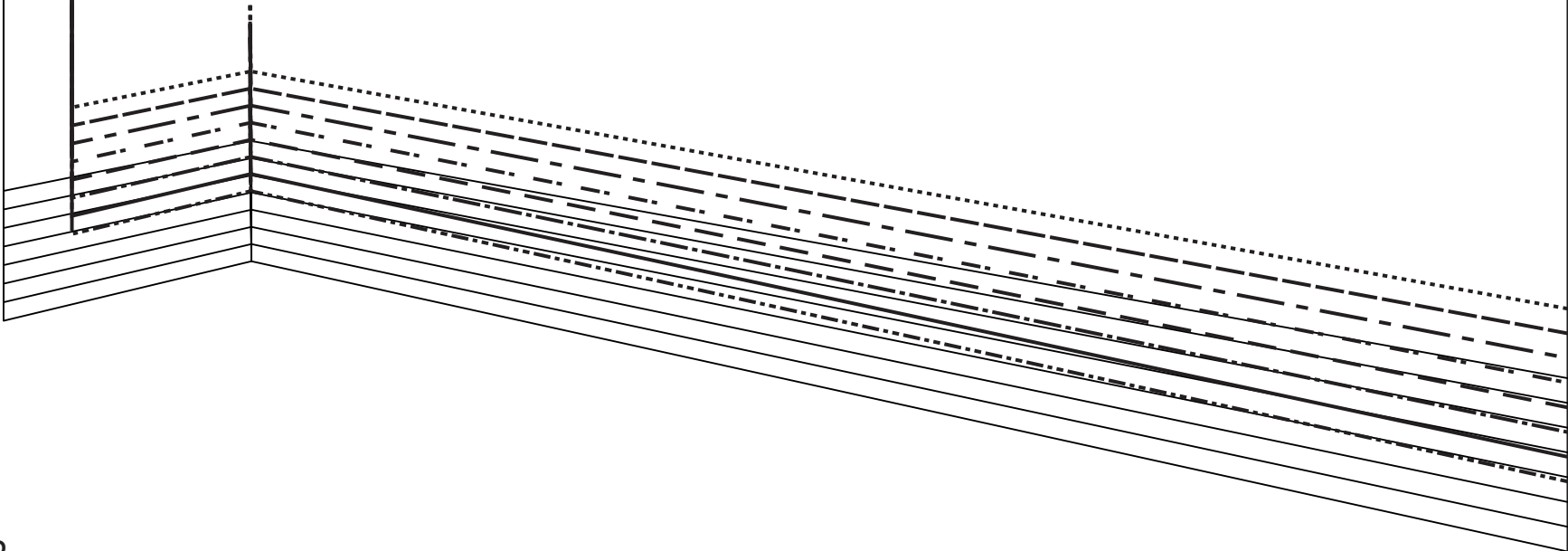




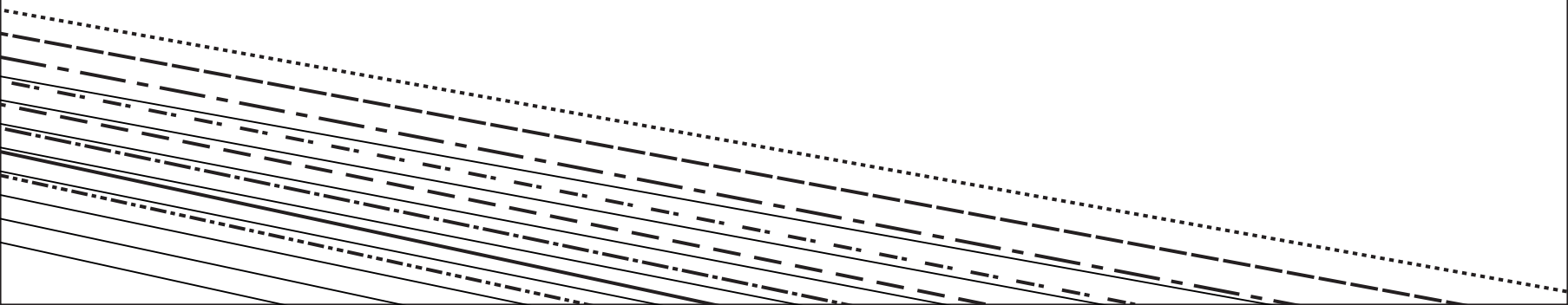


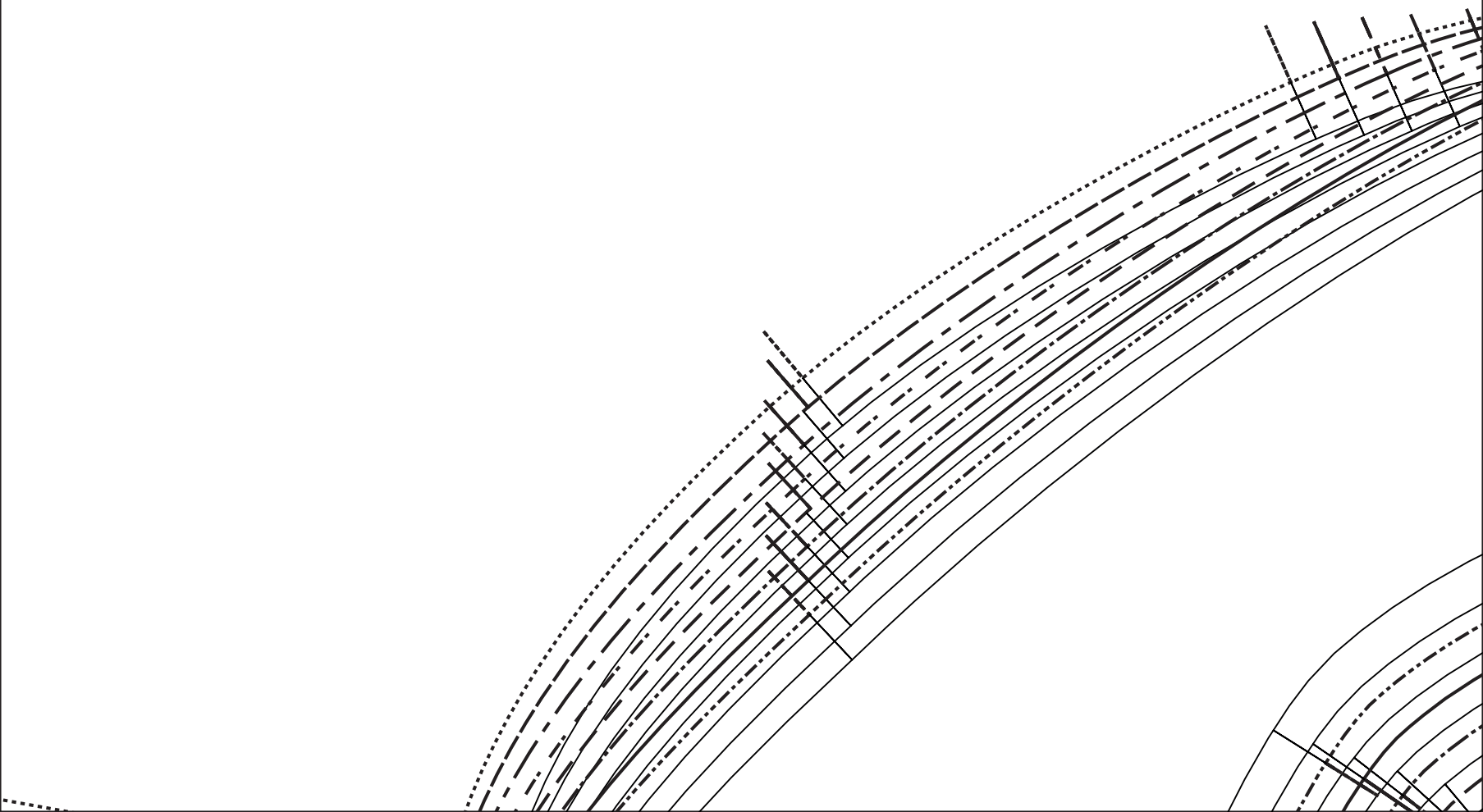


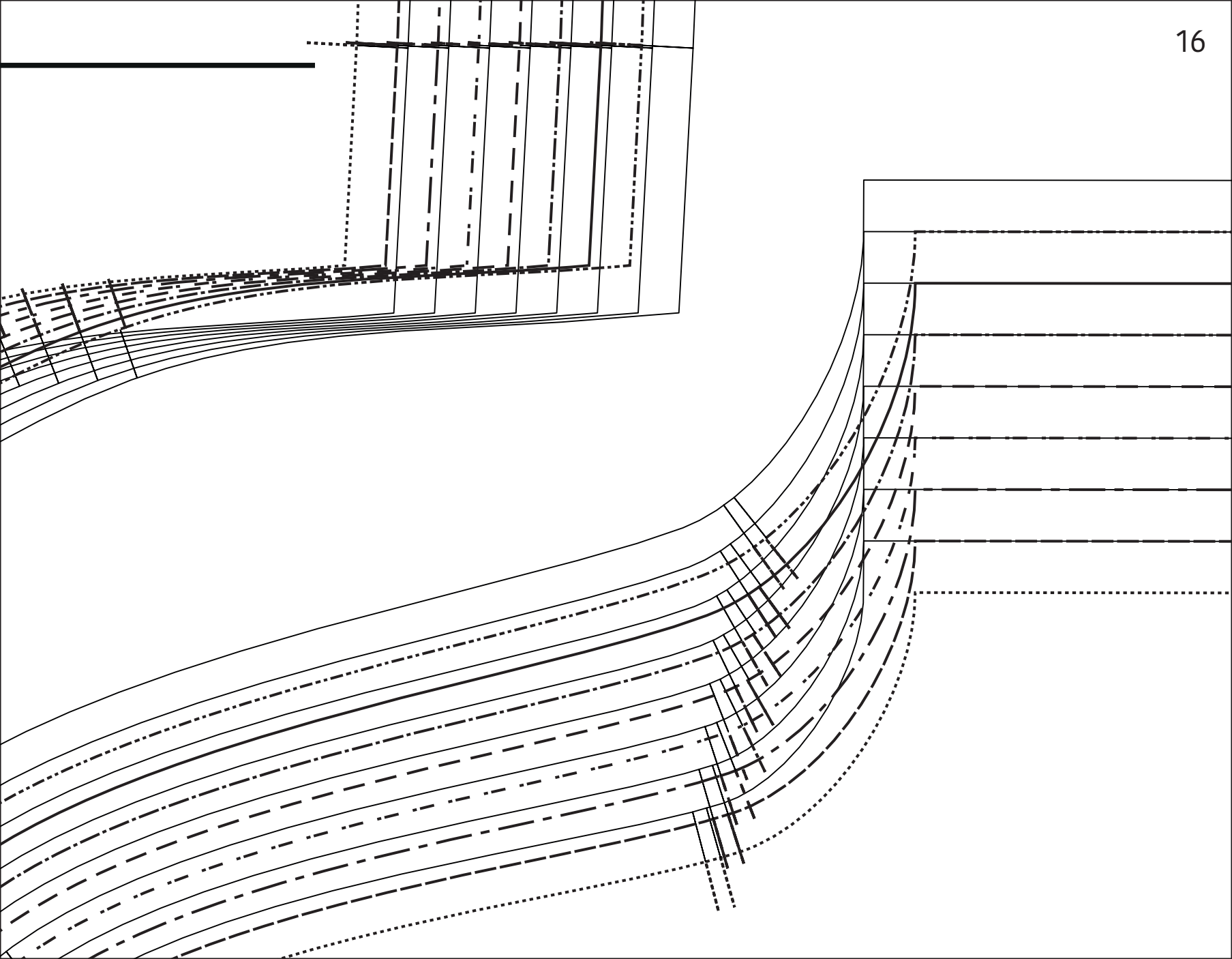




3









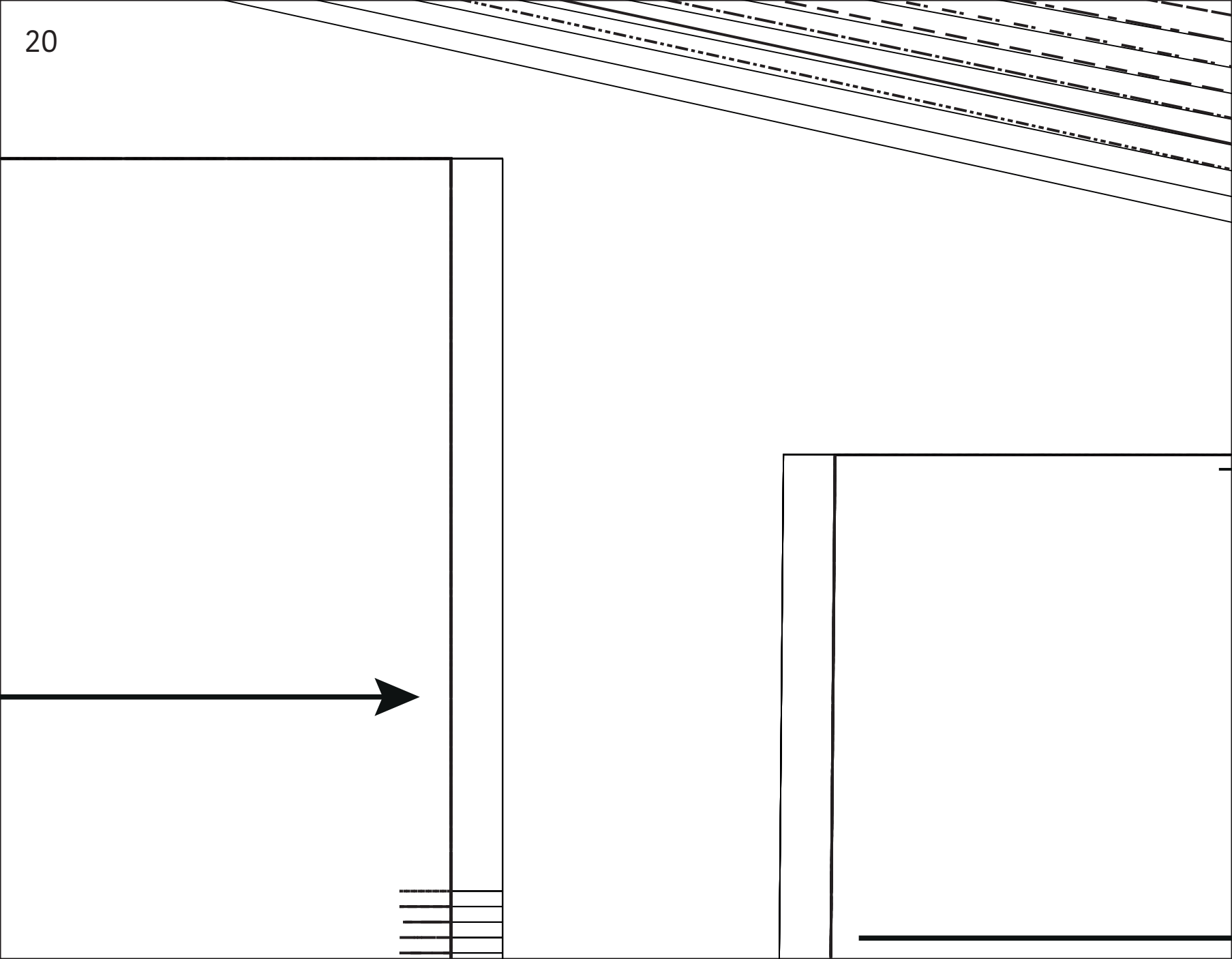
The page contains a series of horizontal lines for writing. From top to bottom, the lines are: a solid line, a dashed line, a solid line, a dashed line, a solid line, a dashed line, a solid line, a dashed line, a solid line, a dotted line, and a solid line. The dotted line is positioned approximately one-third of the way down the page.

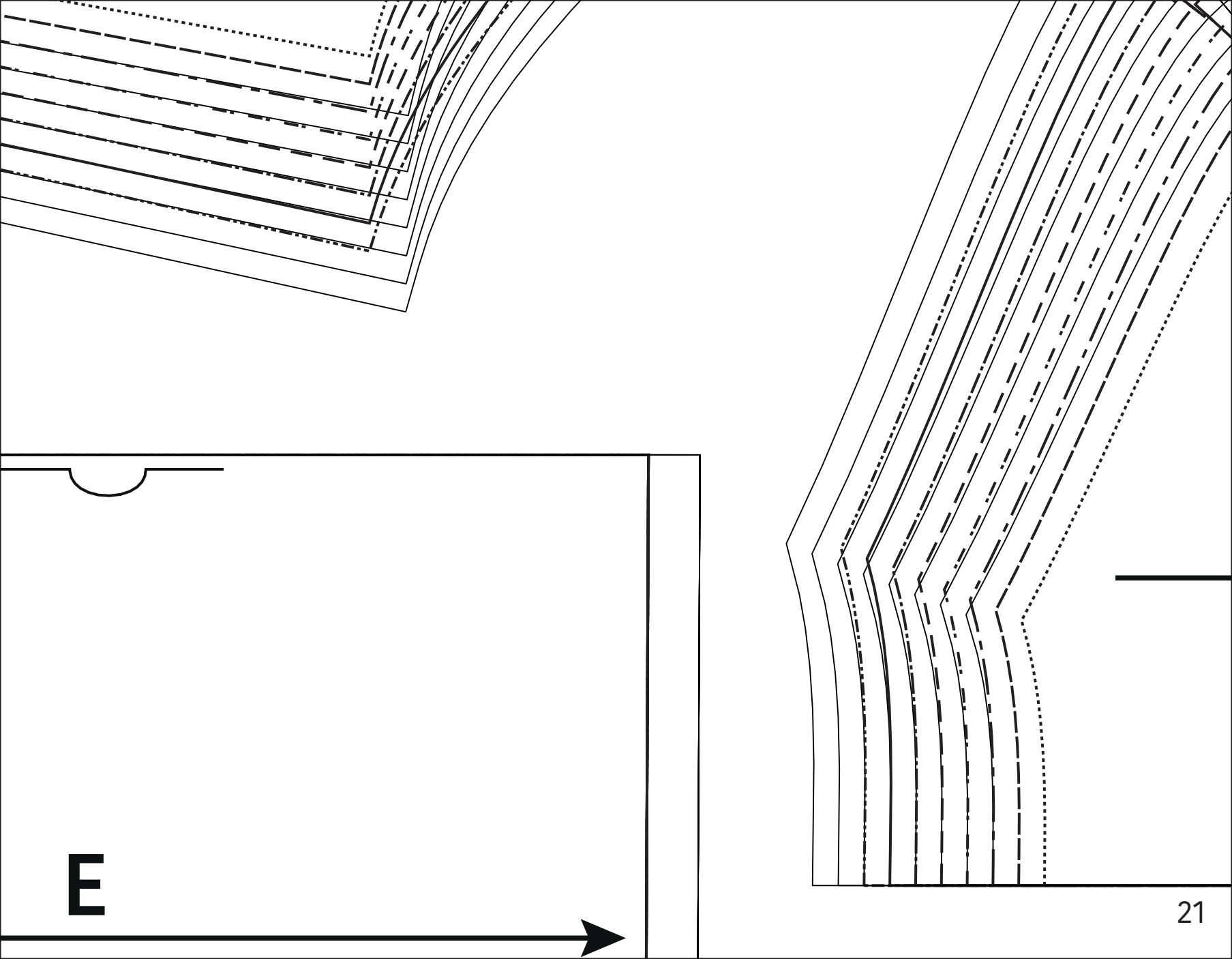




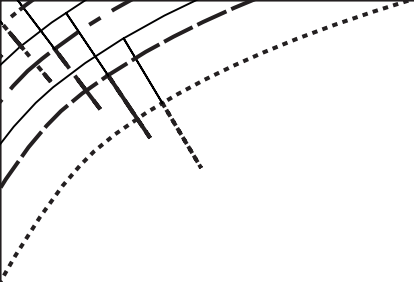
**D**







**E**



**B**



MR/MDS/CB/RM

