

Tina

Rok / Jupe /
Skirt / Rock

Maten / Tailles / Sizes / Größen:

.....	30
.....	32
.....	34
.....	36
.....	38
.....	40
.....	42
.....	44
.....	46
.....	48

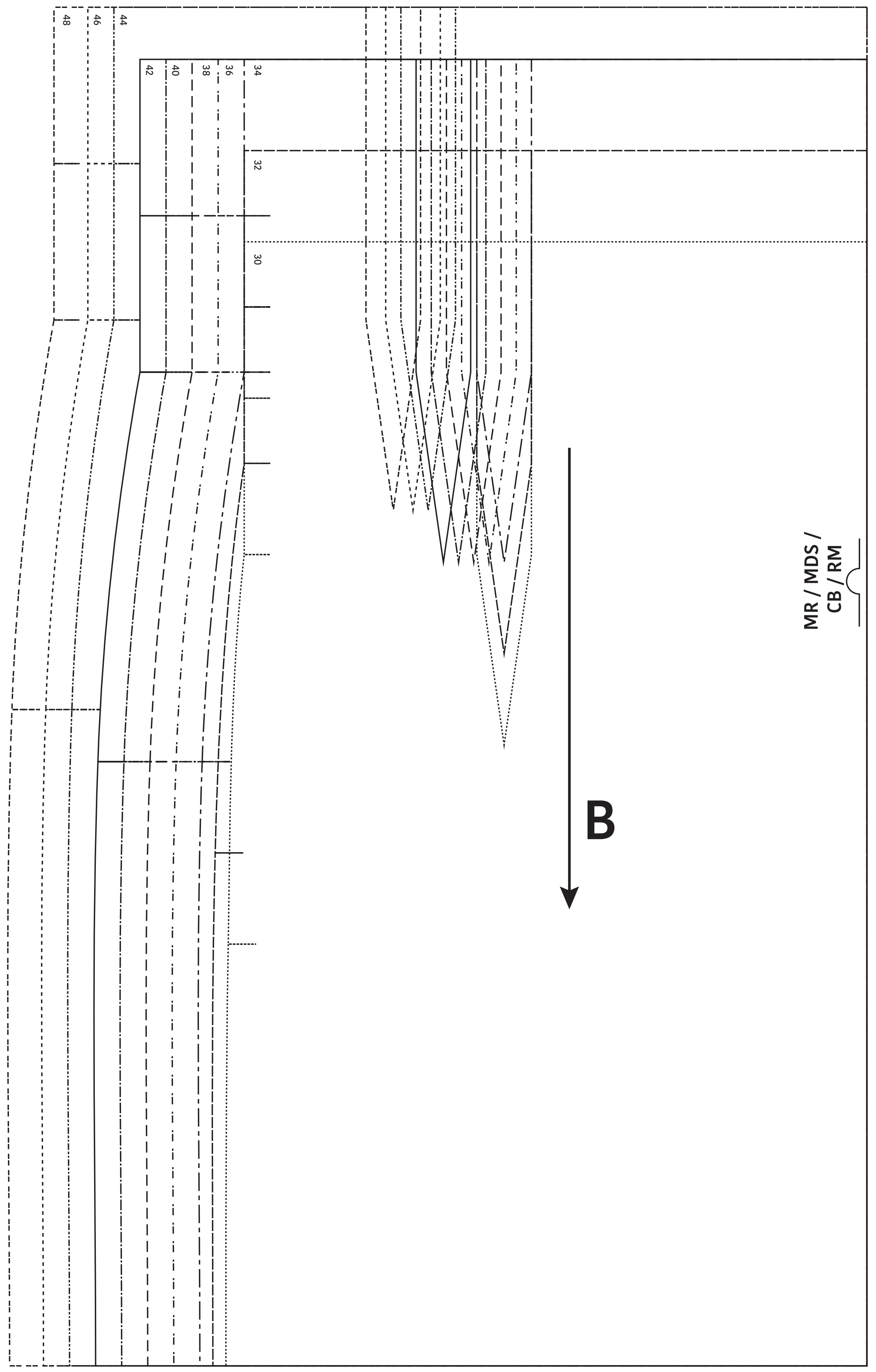
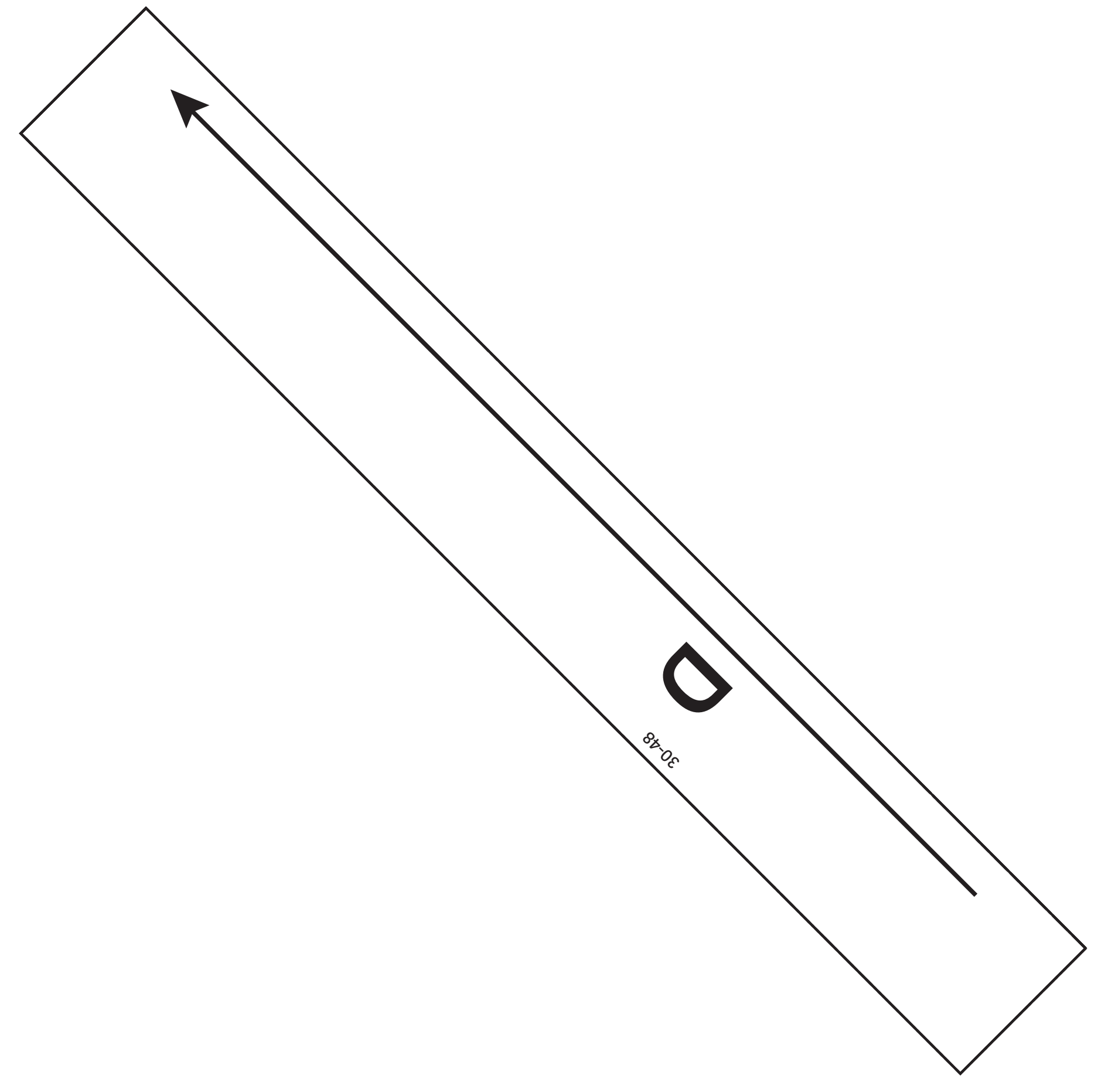
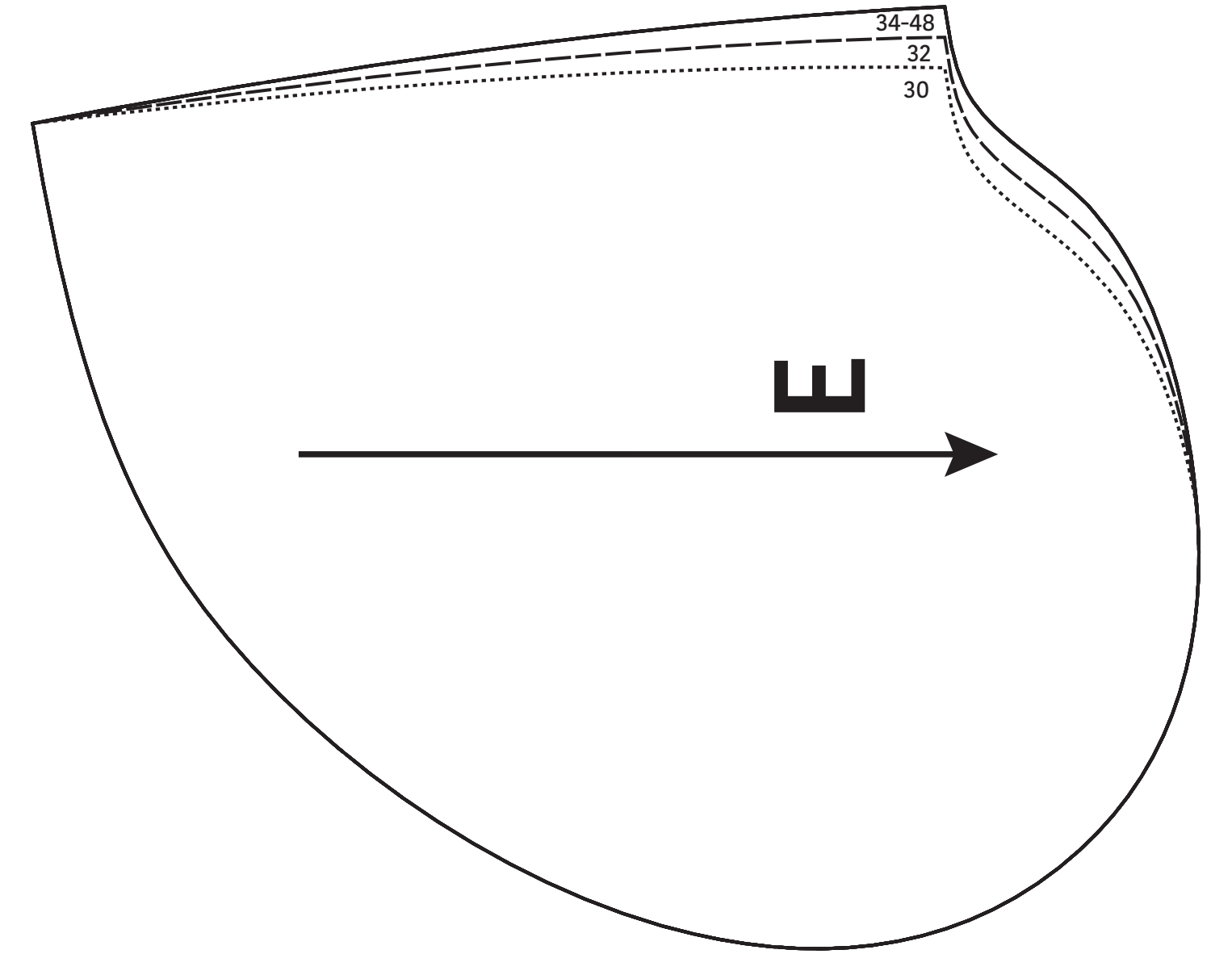
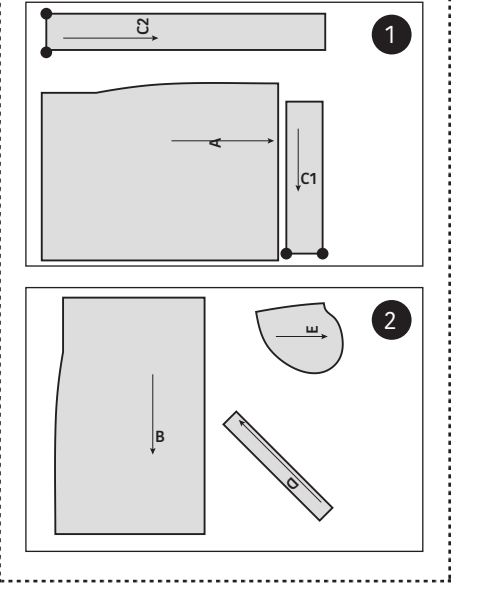
- Patroondelen / Pièces du patron /
Pattern pieces / Schnittteile:
- A voorpand / devant / front panel /
Vorderteil
 - B ruggand / dos / back panel /
Rückenteil
 - C taillelint / ruban de taille /
ribbon belt / Taillenband
 - D riemlus / passants / belt loop /
Gürtelschlaufe
 - E zak / poche / pocket / Tasche

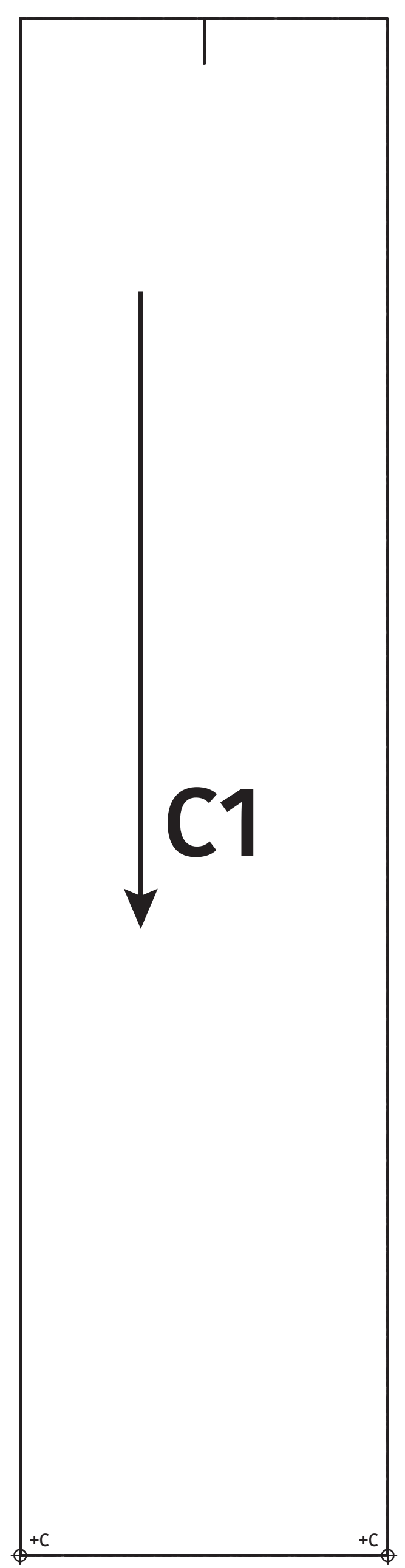
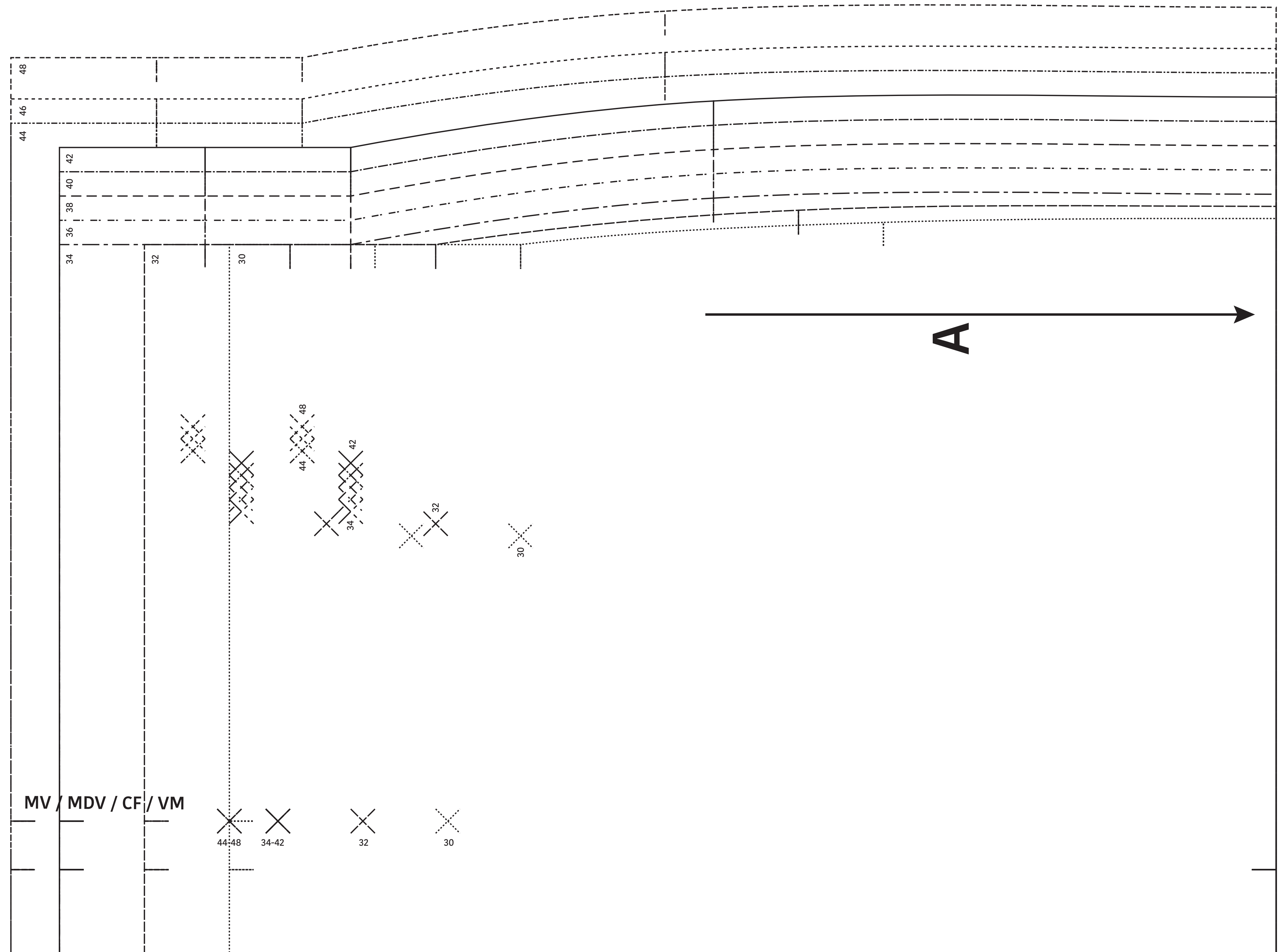
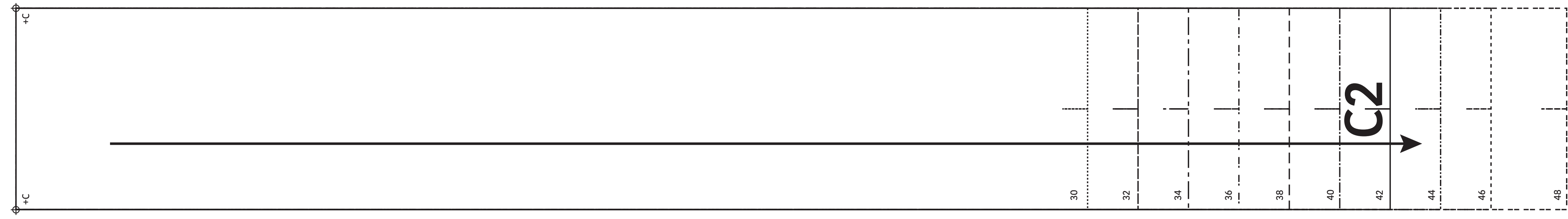
LET OP! De patroondelen bevinden zich op verschillende raderbladen.

ATTENTION ! Les pièces du patron sont réparties sur plusieurs planches.

IMPORTANT! The pattern pieces are located on different pattern sheets.

ACHTUNG! Die schnittteile befinden sich auf unterschiedlichen Schnittmusterbögen.





Tina
 Rok / Jupe /
 Skirt / Rock
 Zie RADERBLAD 1 / Voir PLANCHE 1 /
 See PATTERN SHEET 1 /
 Siehe SCHNITTMUSTERBOGEN 1