

Nick

Broek / Pantalon /
Trousers / Hose

Maten / Tailles / Sizes / Größen:

-----	XXS
-----	XS
-----	S
-----	M
-----	L
-----	XL
-----	XXL
-----	XXXL

**Patroondelen / Pièces du patron /
Pattern pieces / Schnittteile:**

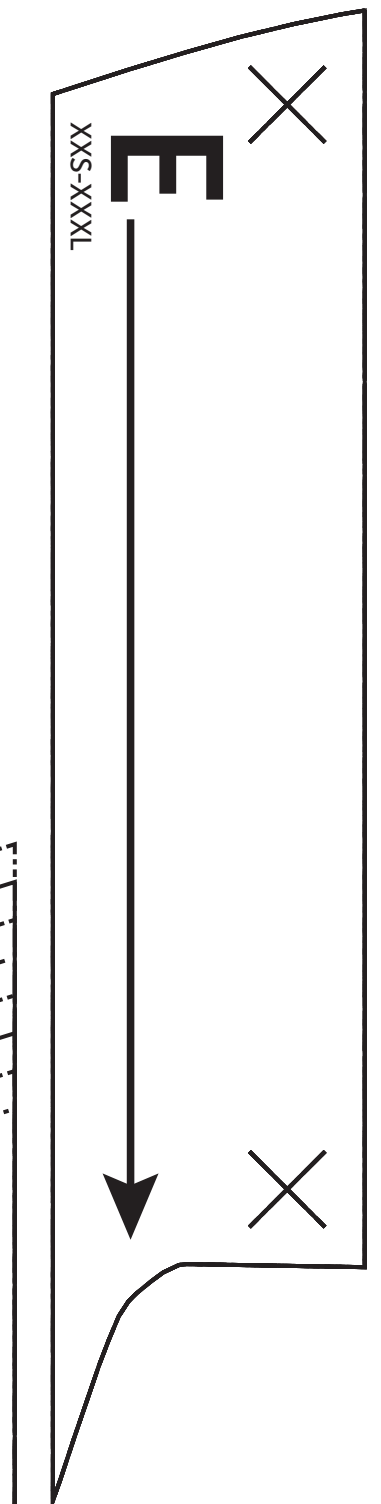
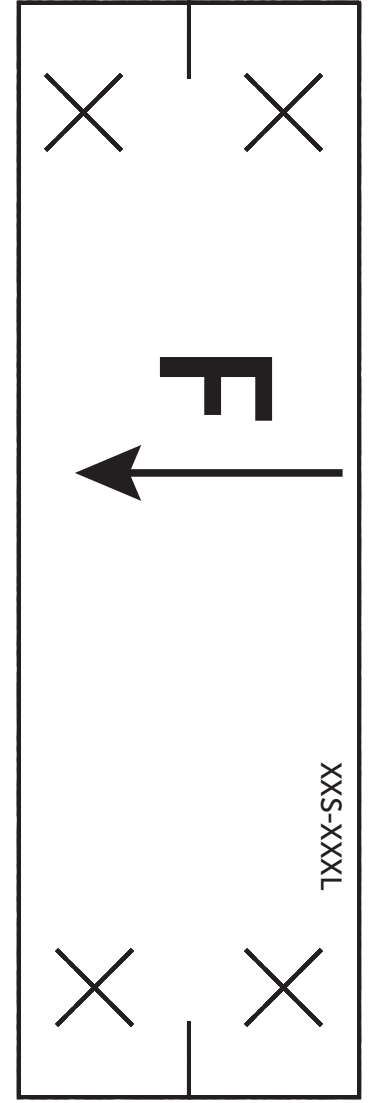
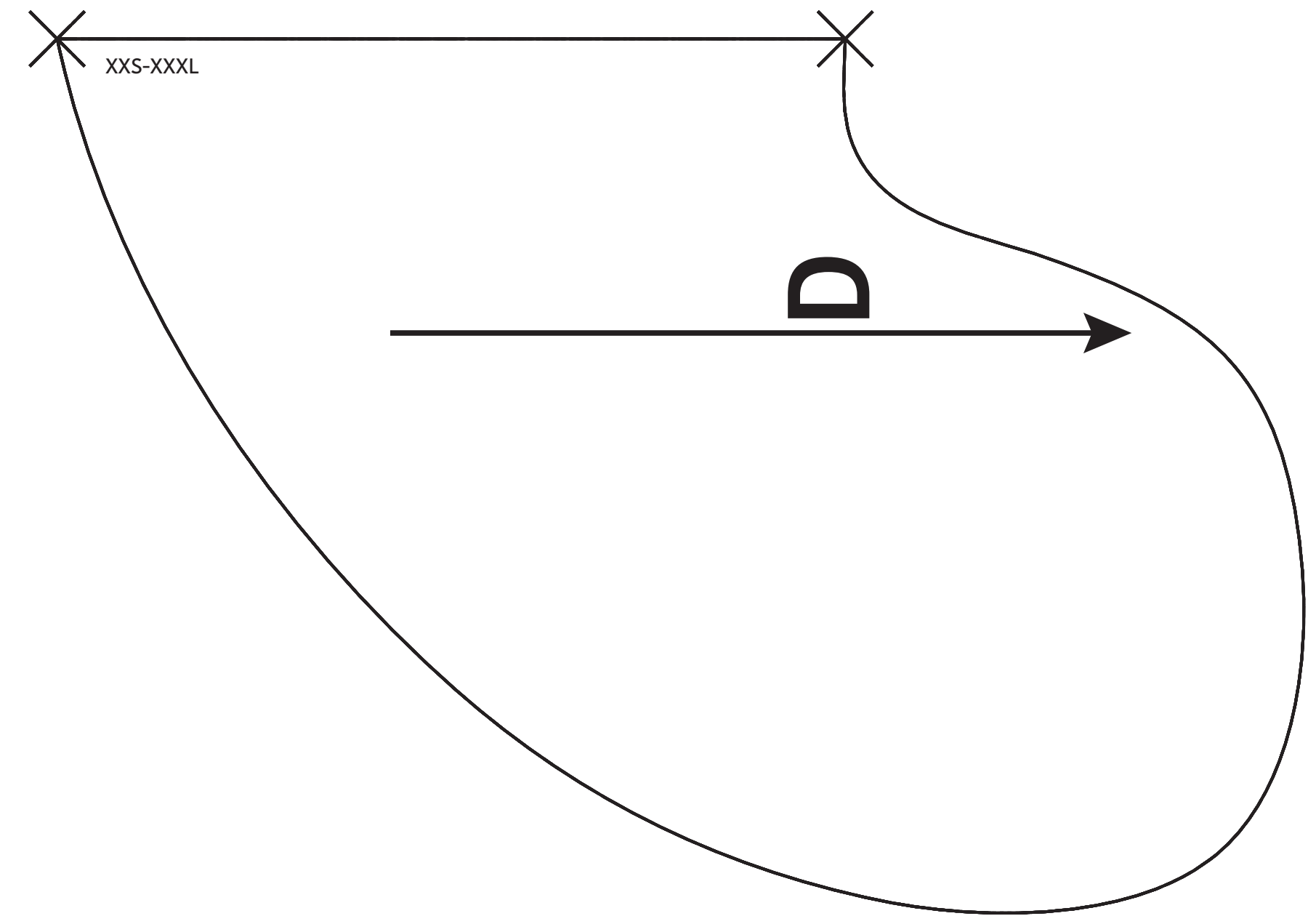
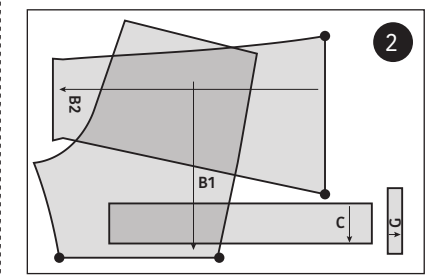
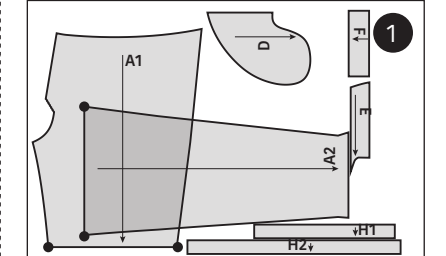
- A** voorpand / devant / front panel / Vorderenteil
- B** rugpand / dos / back panel / Rückenteil
- C** tailleband / ceinture / waistband / Bund
- D** zijzak / poche / side pocket / seitliche Tasche
- E** inkiijk zijzak / ouverture poche / outer pocket / Tascheneingriff
- F** bies / liseré poche dos / trim / Paspel
- G** inkiijk bies / liseré ouverture poche dos / outer pocket trim / Paspel Tascheneingriff
- H** lint / ruban / ribbon / Band

LET OP! De patroondelen bevinden zich op verschillende raderbladen.

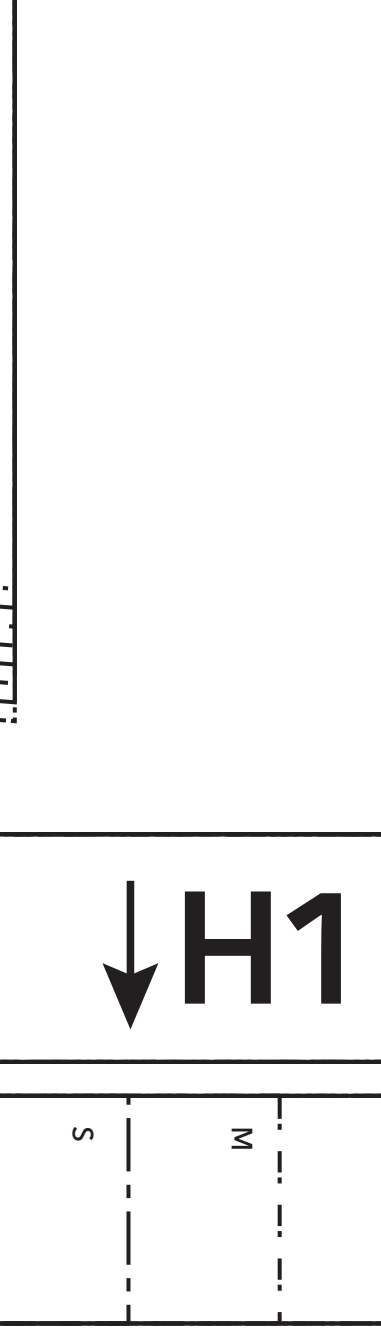
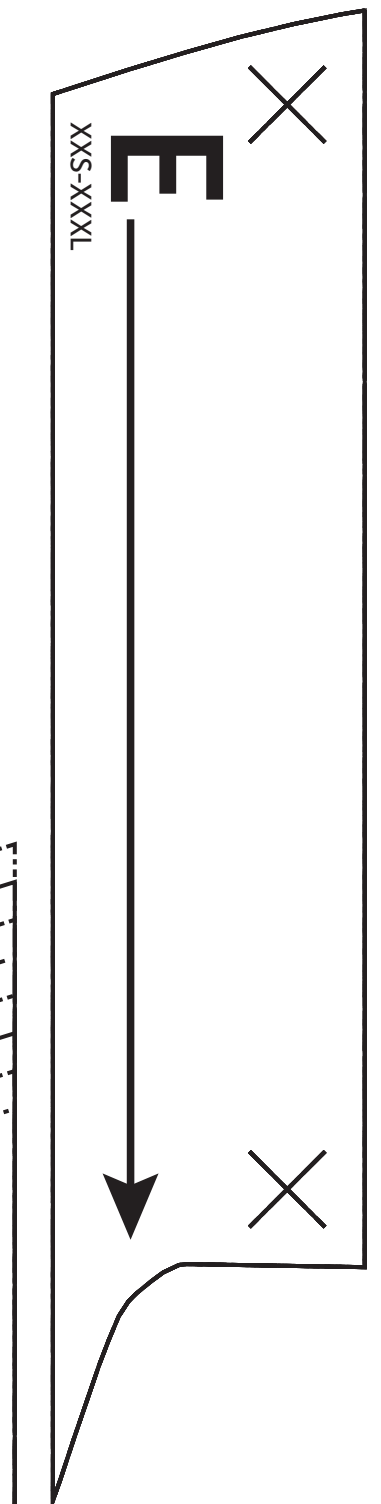
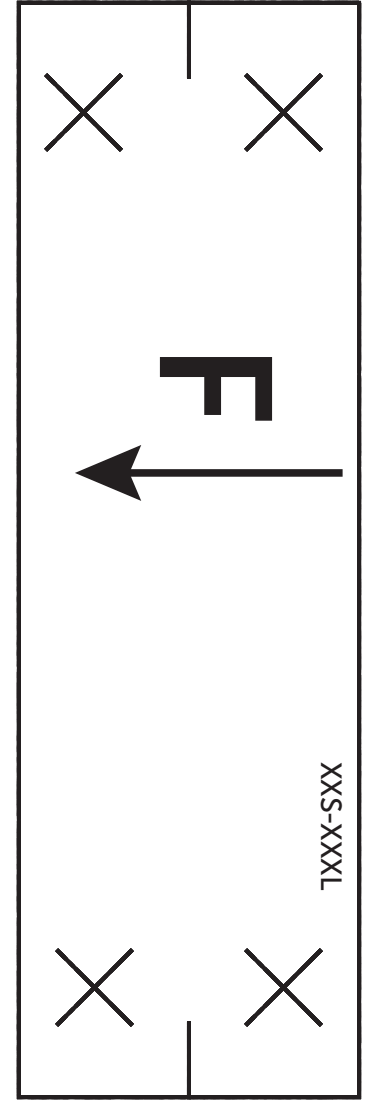
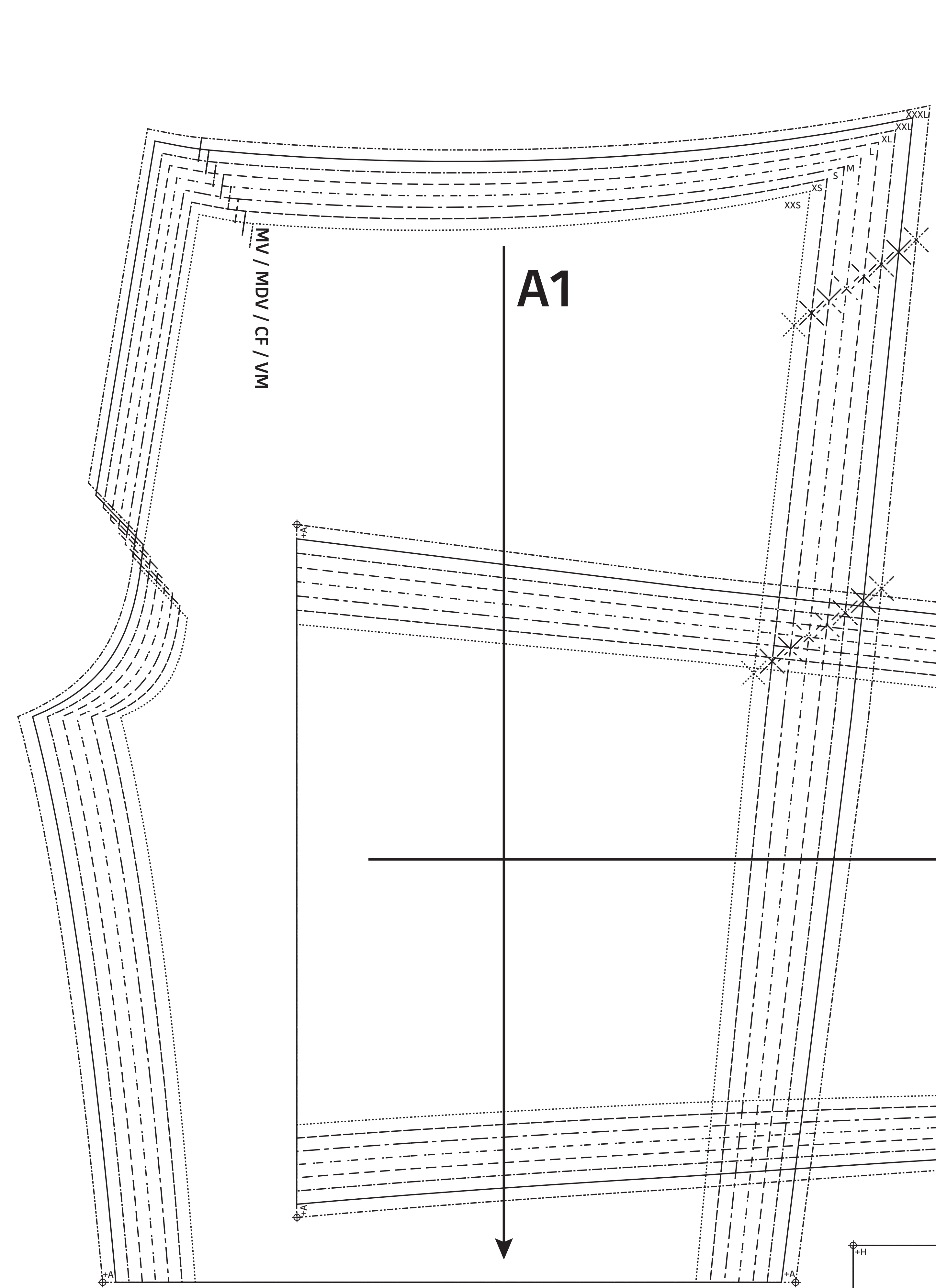
ATTENTION! Les pièces du patron sont réparties sur plusieurs planches.

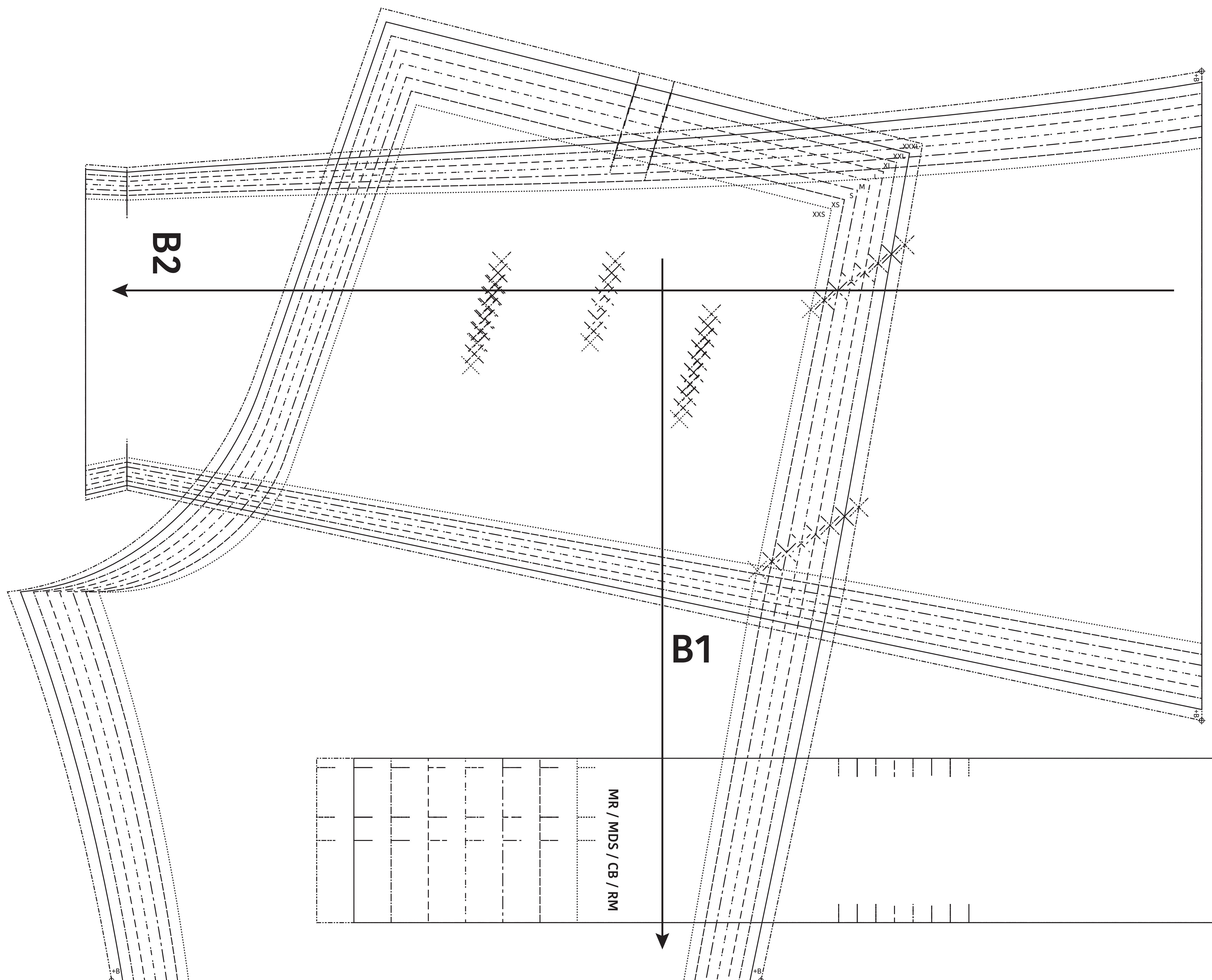
IMPORTANT! The pattern pieces are located on different pattern sheets.

ACHTUNG! Die schnittteile befinden sich auf unterschiedlichen Schnittmusterbögen.



+H	+H	H2 ↓	SXX	SX	S	M	L	TX	TXL	TXX	TXXX	+H	+H





Nick
 Broek / Pantalon /
 Trousers / Hose
 Zie RADERBLAD 2 / Voir PLANCHE 2 /
 See PATTERN SHEET 2 /
 Siehe SCHNITTMUSTERBOGEN 2

