

# Dana

Rok / Jupe / Skirt / Rock

Maten / Tailles / Sizes / Größen:

.....	92
-----	98
-----	104
- - - - -	110
-----	116
-----	122 / 128
-----	134 / 140
-----	146 / 152
-----	158 / 164
-----	170 / 176

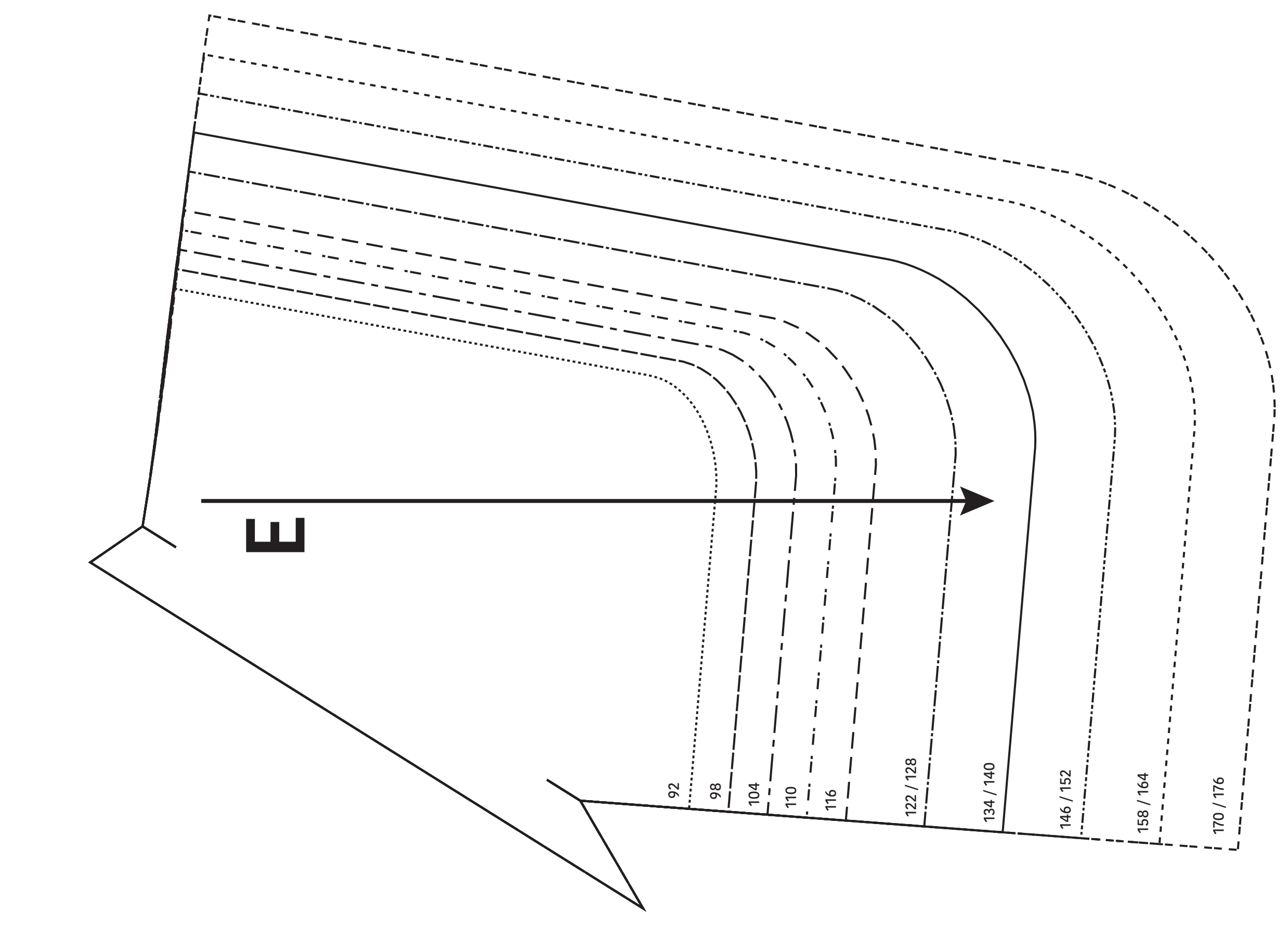
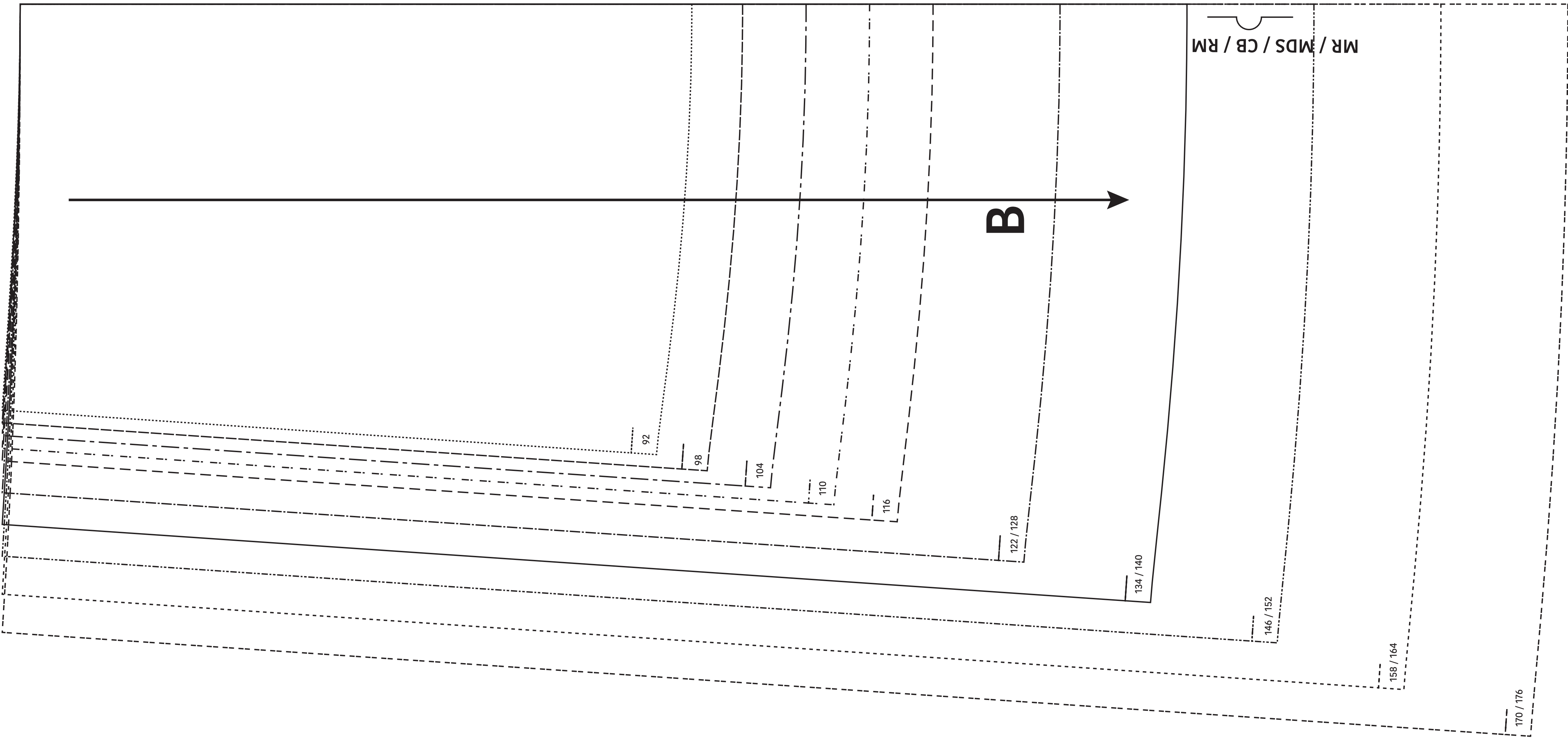
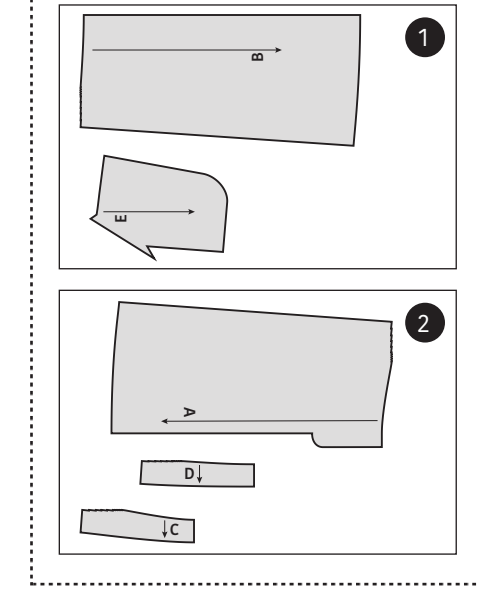
- Patroondelen / Pièces du patron / Pattern pieces / Schnittteile:
- A** voorpand / devant / front panel / Vorderteil
  - B** rugpand / dos / back panel / Rückenteil
  - C** beleg VP / parementure DV / facing FP / Besatz VT
  - D** beleg RP / parementure DS / facing BP / Besatz RT
  - E** zak / poche / pocket / Tasche

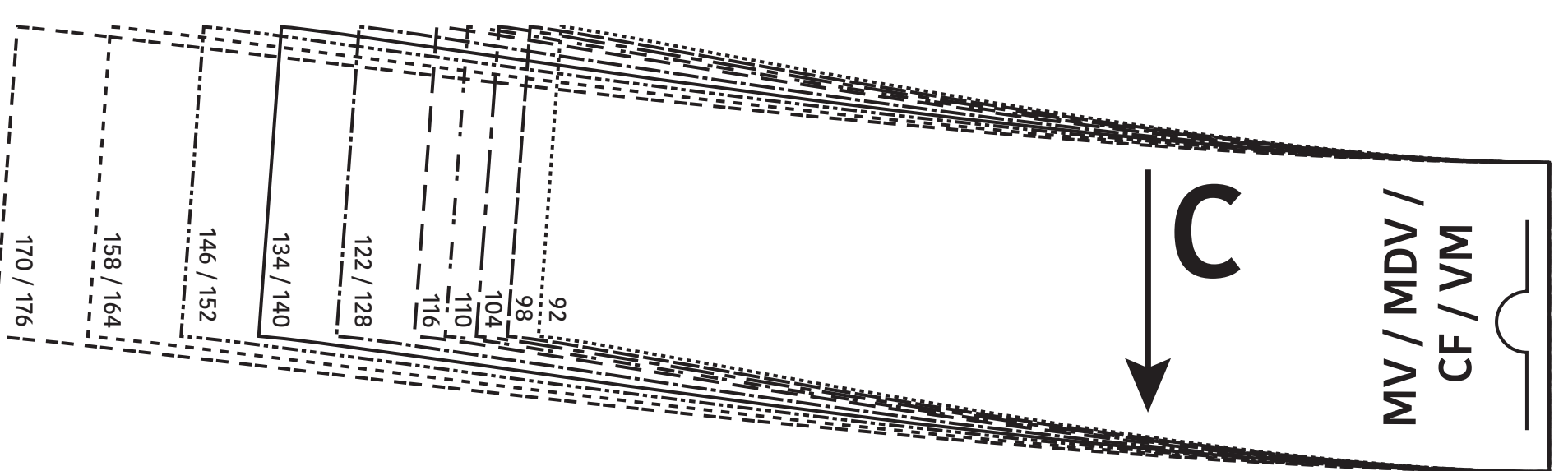
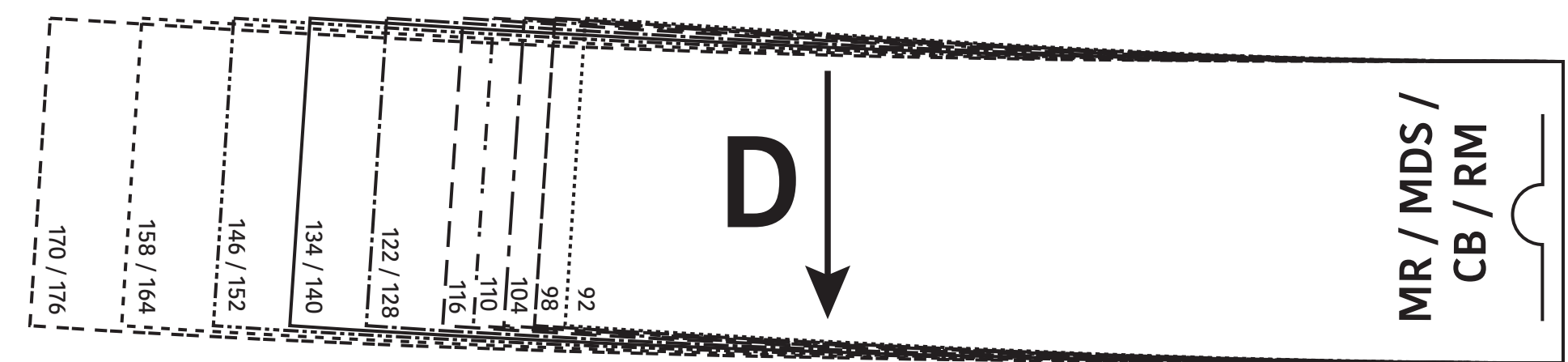
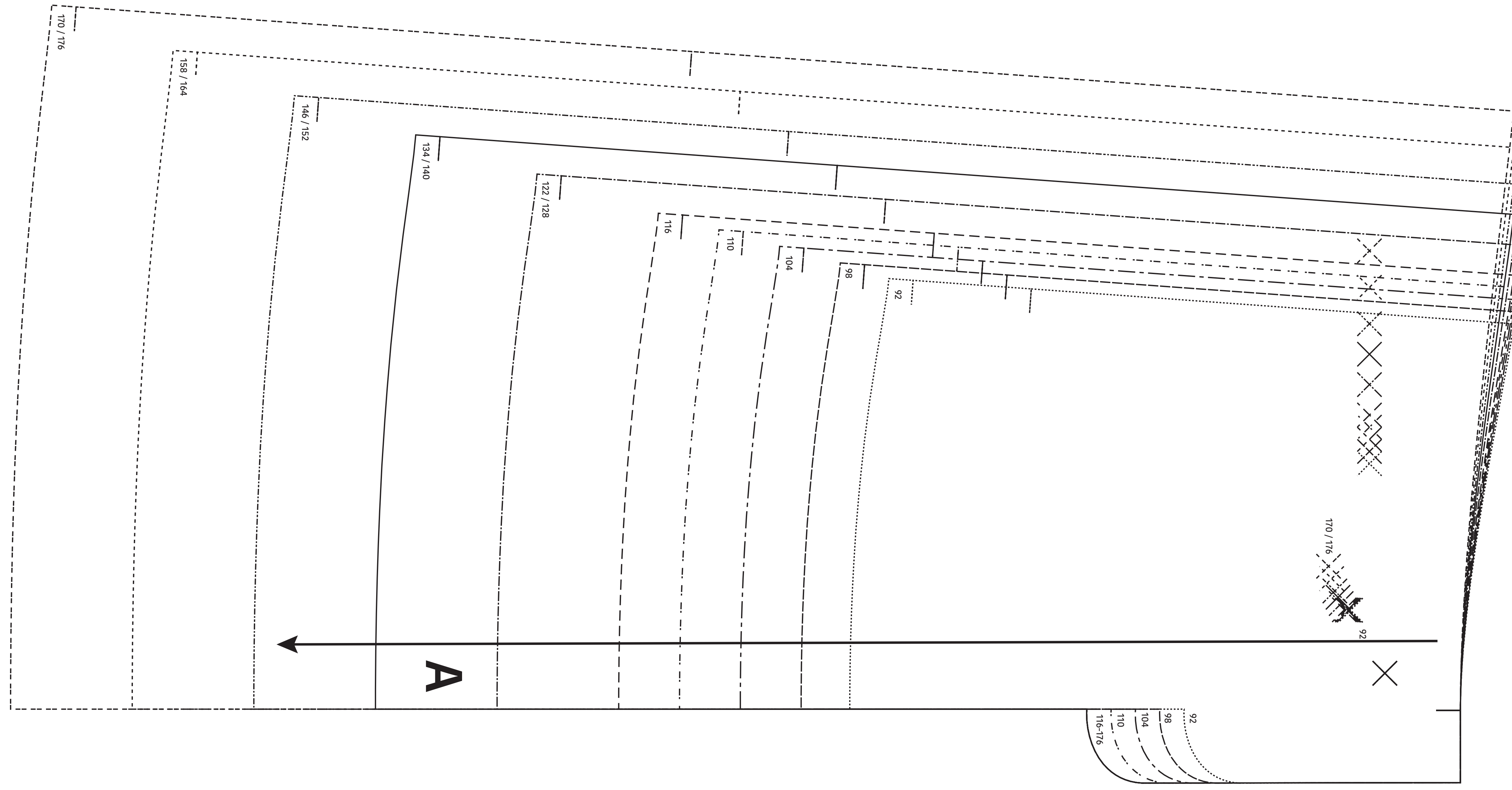
**LET OP!** De patroondelen bevinden zich op verschillende raderbladen.

**ATTENTION!** Les pièces du patron sont réparties sur plusieurs planches.

**IMPORTANT!** The pattern pieces are located on different pattern sheets.

**ACHTUNG!** Die schnittteile befinden sich auf unterschiedlichen Schnittmusterbögen.





**Dana**  
 Rok / Jupe /  
 Skirt / Rock  
 Zie RADERBLAD 1 / Voir PLANCHE 1 /  
 See PATTERN SHEET 1 /  
 Siehe SCHNITTMUSTERBOGEN 1