

# Jack Hemd / Chemise / Shirt

Maten / Tailles / Sizes:

92
98
104
110
116
122 / 128
134 / 140
146 / 152
158 / 164
170 / 176

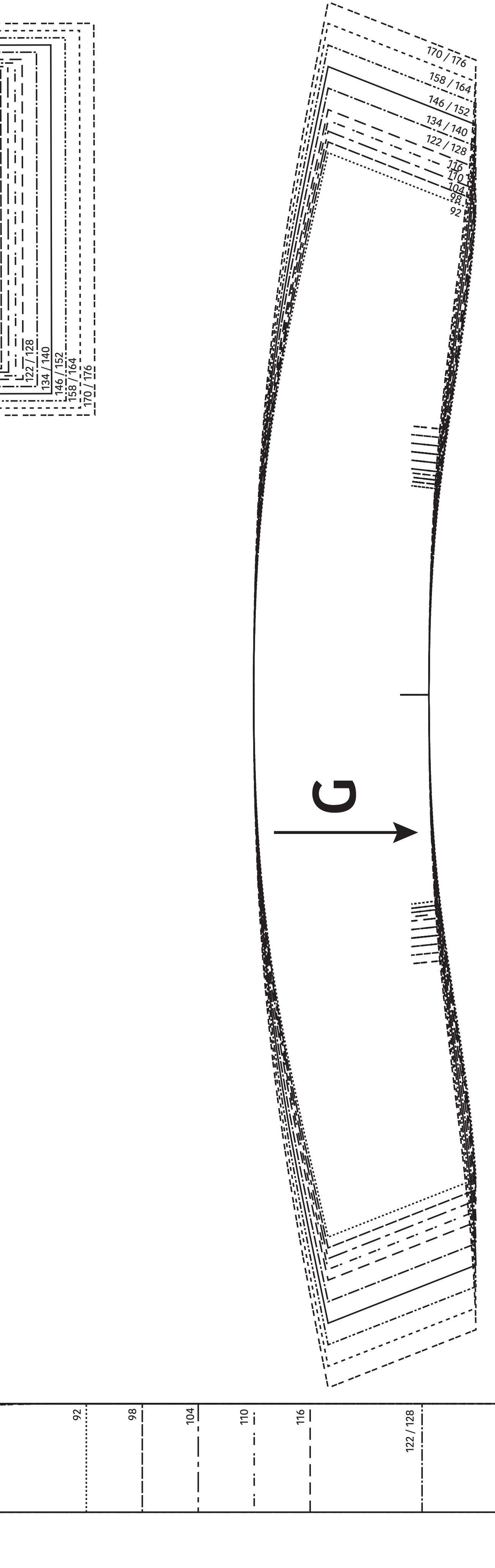
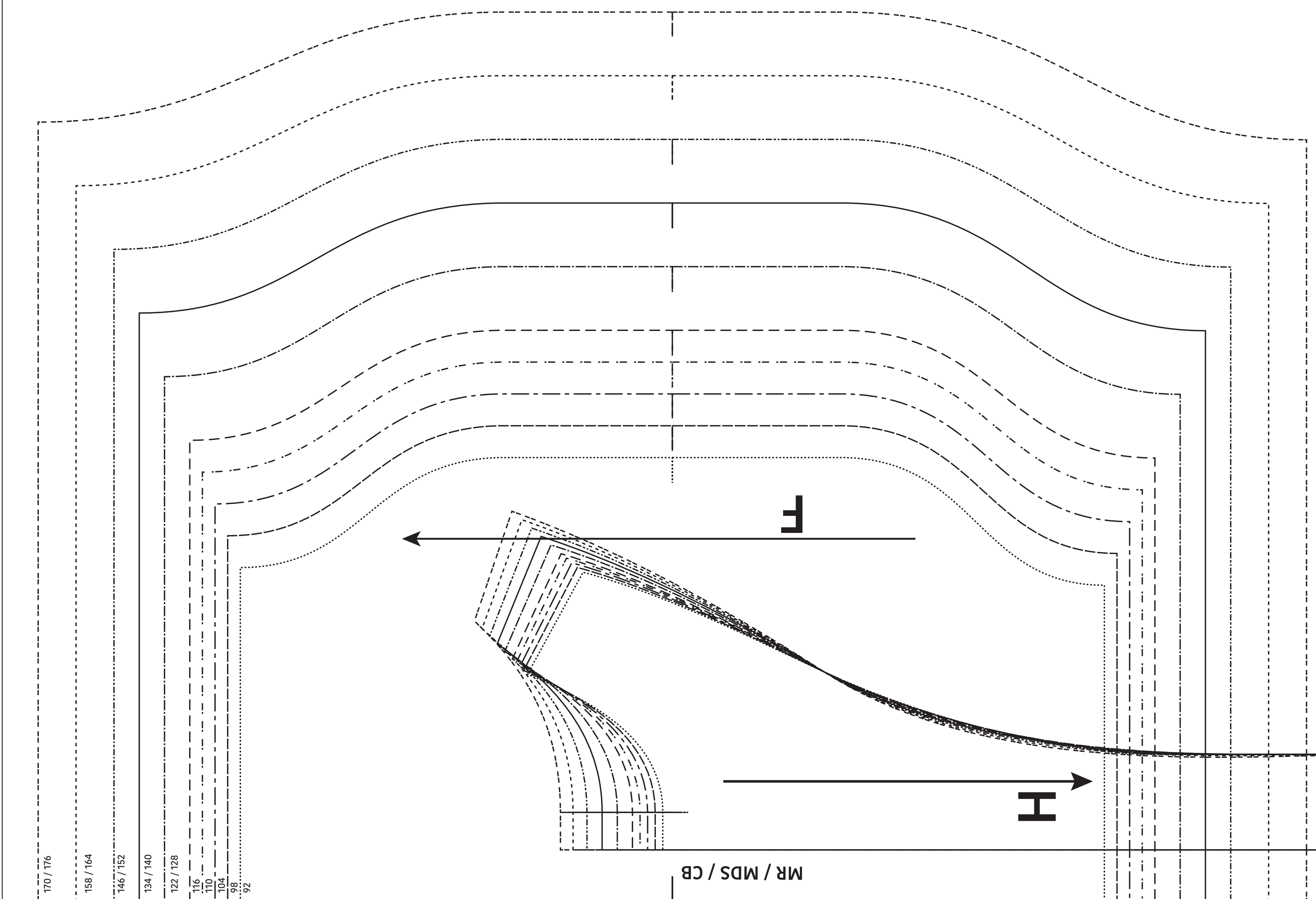
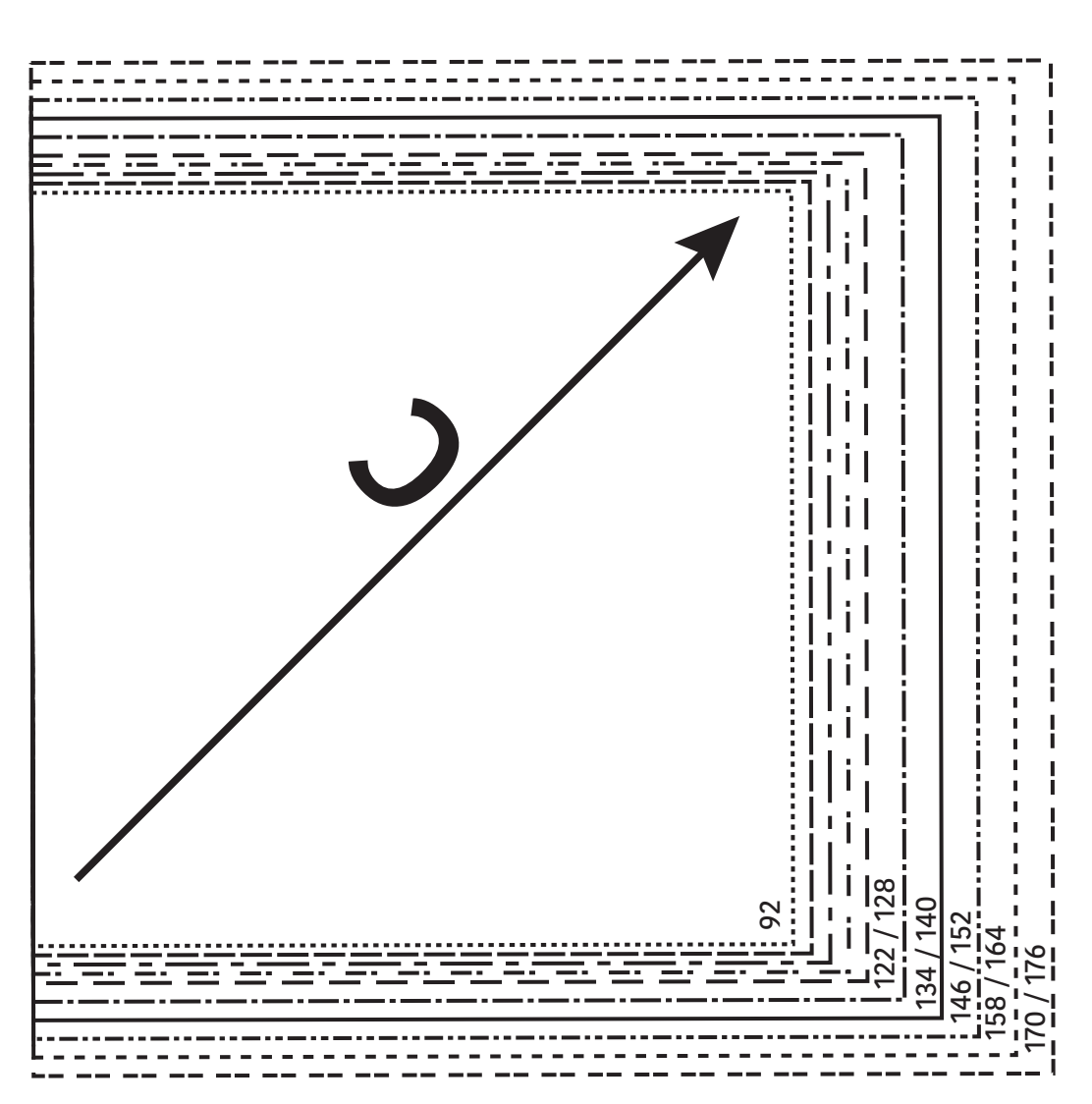
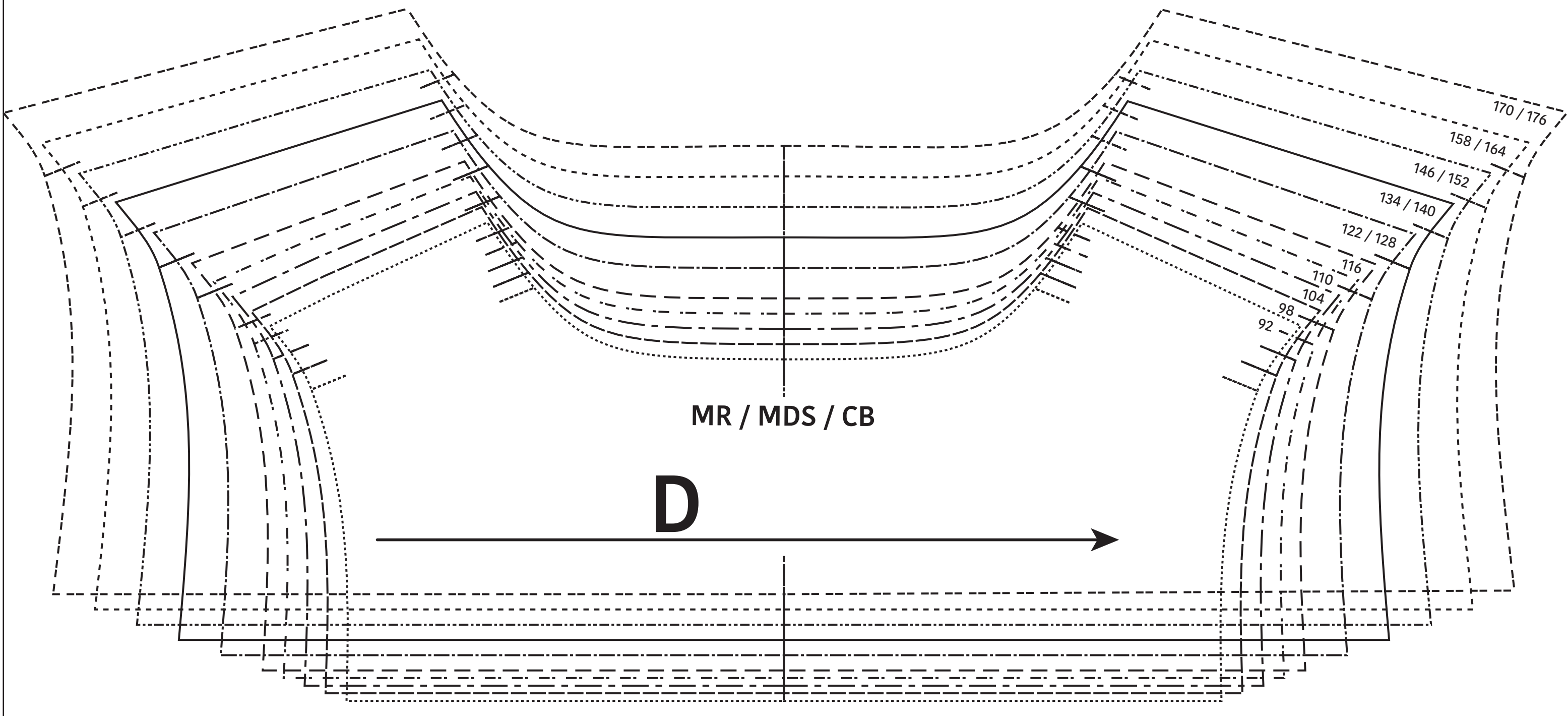
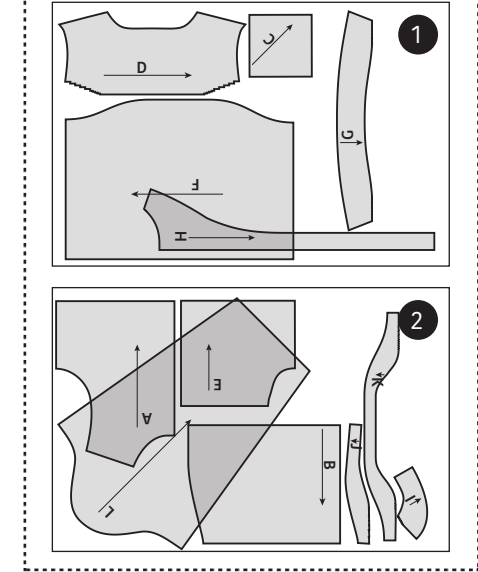
### Patroondelen / Pièces du patron / Pattern pieces:

- A voorpand boven / devant haut / top front panel
- B voorpand onder / devant bas / bottom front panel
- C zak / poche / pocket
- D rugpand boven / dos haut / top back panel
- E rugpand midden / milieu dos / center back
- F rugpand onder / dos bas / bottom back panel
- G kraag / col / collar
- H beleg VP / parementure DV / facing FP
- I beleg RP / parementure DS / facing BP
- J zoombeleg VP / parementure ourlet DV / hem facing FP
- K zoombeleg RP / parementure ourlet DS / hem facing BP
- L mouw / manche / sleeve

**LET OP!** De patroondelen bevinden zich op verschillende raderbladen.

**ATTENTION!** Les pièces du patron sont réparties sur plusieurs planches.

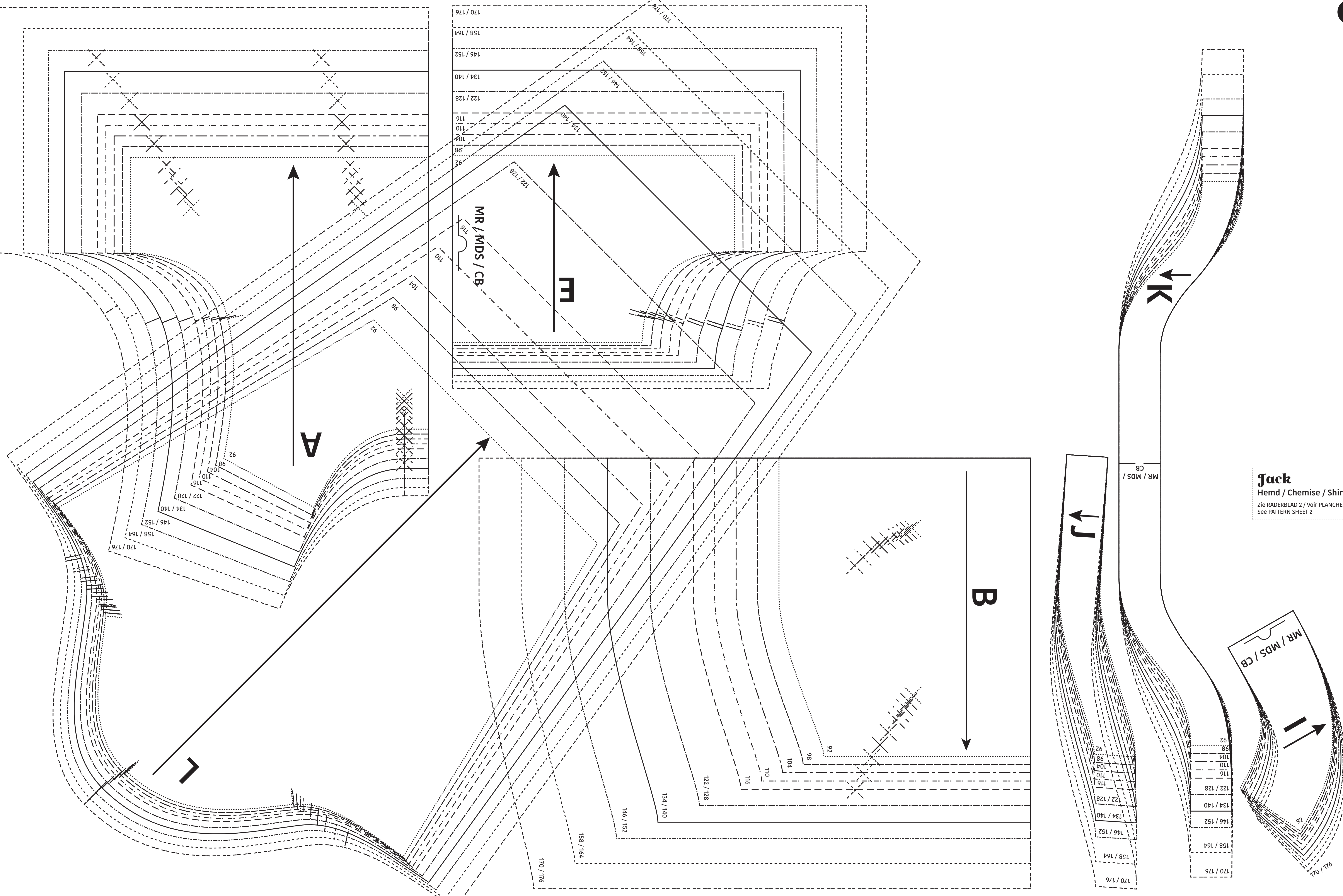
**IMPORTANT!** The pattern pieces are located on different pattern sheets.



170 / 176  
158 / 164  
146 / 152  
134 / 140  
122 / 128  
116  
110  
104  
98  
92

MR / MDS / CB

92 98 104 110 116 122 / 128 134 / 140 146 / 152 158 / 164 170 / 176



**Jack**  
 Hemd / Chemise / Shirt  
 Zie RADERBLAD 2 / Voir PLANCHE 2 /  
 See PATTERN SHEET 2

92
98
104
110
116
122 / 128
134 / 140
146 / 152
158 / 164
170 / 176

MR / MDS / CB

MR / MDS / CB

92L / 04L